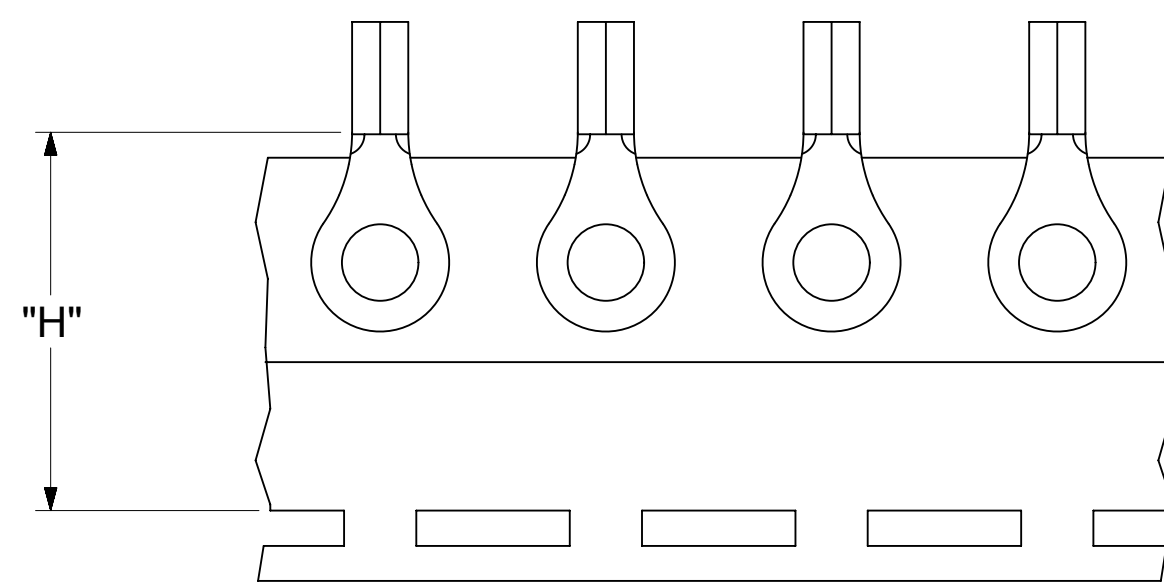
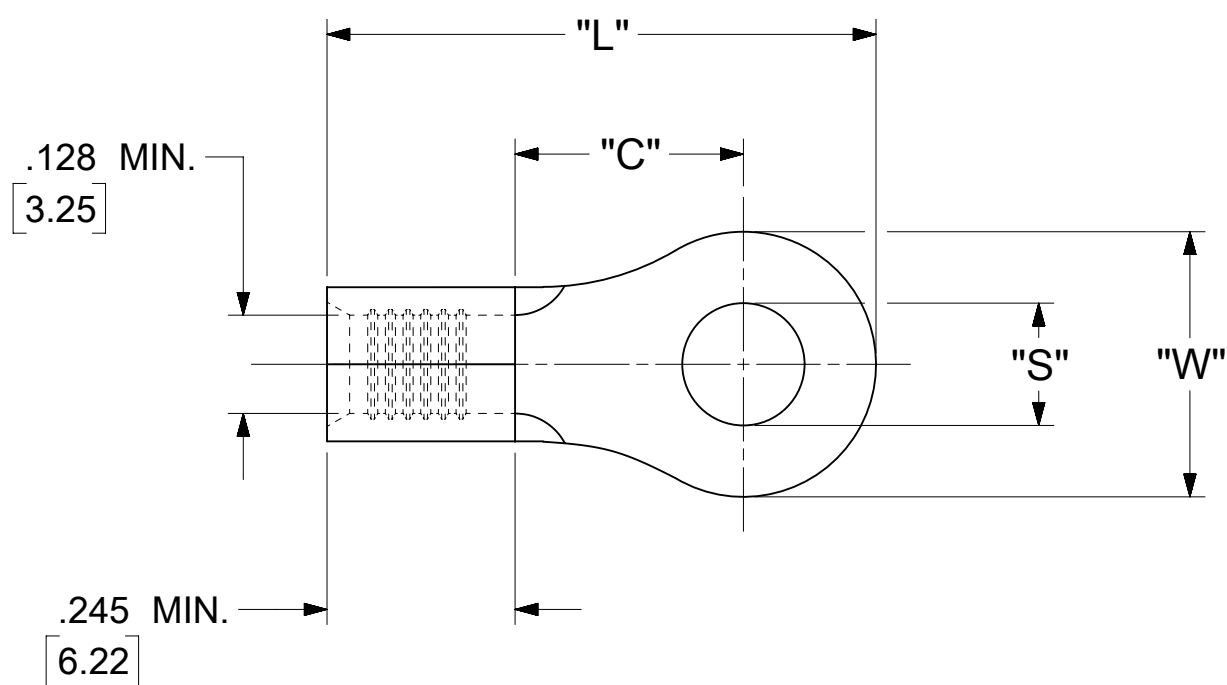


LOOSE PIECE		TAPE MOUNTED		SPECIFICATIONS					
MATERIAL NUMBER	ENGINEERING NUMBER	MATERIAL NUMBER	ENGINEERING NUMBER	STUD SIZE	"S" ±.005 [0.13]	"W" ±.010 [0.25]	"C" MIN.	"L" MAX.	"H"
190690192	C-101-12	---	---	12	.515 [13.08]	.750 [19.05]	.611 [15.52]	1.280 [32.51]	1.300 [33.02]
190690195	C-101-14	---	---	14	.265 [6.73]				
190690196	C-101-38	190690145	C-101-38T	38	.390 [9.91]				
---	---	---	---	56	.328 [8.33]				
190690198	C-101-76	190690146	C-101-76T	76	.453 [11.51]	.530 [13.46]	.393 [9.98]	.952 [24.18]	.980 [24.89]
190690217	C-130-10	190690218	C-130-10T	10	.198 [5.03]				
190690219	C-130-14	190690221	C-130-14T	14	.265 [6.73]				
---	---	---	---	38	.390 [9.91]				
190690223	C-130-56	190690225	C-130-56T	56	.328 [8.33]	.282 [7.16]	.306 [7.77]	.741 [18.82]	.980 [24.89]
---	---	---	---	4	.119 [3.02]				
190690230	C-136-06	190690232	C-136-06T	6	.146 [3.71]				
190690233	C-136-08	190690235	C-136-08T	8	.173 [4.39]				
190690236	C-140-10	---	---	10	.198 [5.03]	.592 [15.04]	.468 [11.89]	1.056 [26.82]	1.172 [29.77]
190690238	C-140-14	190690240	C-140-14T	14	.265 [6.73]				
190690241	C-140-38	190690243	C-140-38T	38	.390 [9.91]				
190690244	C-140-56	190690246	C-140-56T	56	.328 [8.33]				
---	---	---	---	209	.209 [5.31]	.413 [10.50]			
---	---	---	---	413	.413 [10.50]				



PARTS ON TAPE

- NOTES:
1. MATERIAL: COPPER .040±.001 [1.02] STOCK THK.
  2. PLATING: ELECTRO-TIN (.0003 MIN).
  3. WIRE SIZE: 12-10 AWG  
4.0-6.0 MM<sup>2</sup>
  4. "UL" LISTING #E32244  
"CSA" LISTING #18689
  5. ALL DIMENSIONS IN INCHES/[MM].
  6. PARTS ARE ROHS COMPLIANT.
  7. DIMS. SHOWN ARE FOR REFERENCE ONLY.

SYMBOLS	THIS DRAWING CONTAINS INFORMATION THAT IS PROPRIETARY TO MOLEX ELECTRONIC TECHNOLOGIES, LLC AND SHOULD NOT BE USED WITHOUT WRITTEN PERMISSION			
	DIMENSION UNITS	SCALE		CURRENT REV DESC: MIGRATION TO ECTR/NX
▽ = 0	INCH/MM	NTS		EC NO: 619818 DRWN: ABENJAMINLW 2019/06/18 CHK'D: GROJAS01 2019/06/27 APPR: JMACNEIL 2019/07/10
▽ = 0	GENERAL TOLERANCES (UNLESS SPECIFIED)			
▽ = 0		MM	INCH	INITIAL REVISION: DRWN: EDWIN 1992/02/10 APPR: JMACNEIL 2019/07/10
▽ = 0	4 PLACES	±	±	
▽ = 0	3 PLACES	±	± 0.005	THIRD ANGLE PROJECTION DRAWING SERIES C-SIZE 19069
▽ = 0	2 PLACES	± 0.13	± 0.01	
▽ = 0	1 PLACE	± 0.25	±	DOCUMENT NUMBER 190690192 DOC TYPE PSD DOC PART 000 REVISION A
▽ = 0	0 PLACES	±	±	
▽ = 0	ANGULAR TOL	± 0.5 °		MATERIAL NUMBER SEE TABLE CUSTOMER GENERAL MARKET SHEET NUMBER 1 OF 1
▽ = 0	DRAFT WHERE APPLICABLE MUST REMAIN WITHIN DIMENSIONS			

**NOTES:**  
 ① MAT'L: COPPER (STOCK TKN  $\frac{040}{1.02}$ )

PLATING: ELECTRO-TIN

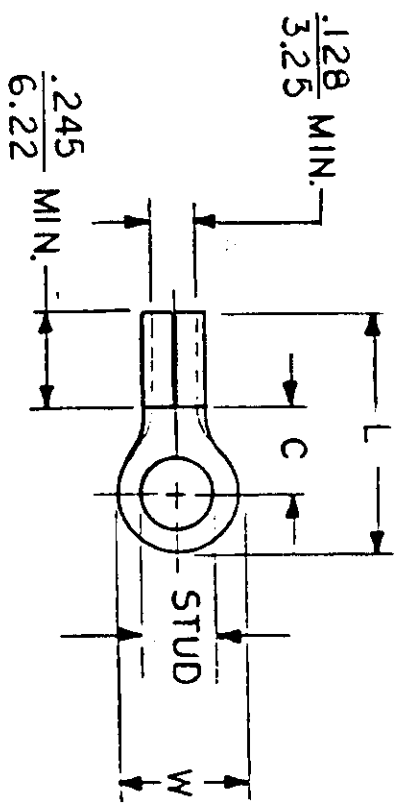
STUD SIZES: ( $\pm 0.005$ )

02 = .094 209 = .209  
 04 = .119 413 = .413  
 06 = .146  
 08 = .173  
 10 = .198  
 14 = .265  
 56 = .328  
 38 = .390

UL LISTING # E32244  
 CSA LISTING # 18689

ALL DIMENSIONS = INCHES  
 M M

WIRE SIZE: 12-10 AWG  
 4.0-6.0 MM<sup>2</sup>



FILE NO. C-CD-101-01

PART NUMBER	"W" ±.010	"C" MIN.	"L" MAX.	REFERENCE		TITLE:	AVAILABLE STUD SIZES
				SCALE:	NTS		
C-101-	$\frac{.750}{19.05}$	$\frac{.611}{15.52}$	$\frac{1.280}{32.51}$	DRWN. BY: <i>Ed Frank</i>	DATE: 2-10-92	RING TONGUE TERMINAL KRIMP TITE 100-SERIES	
C-128-	$\frac{.375}{9.53}$	$\frac{.303}{7.70}$	$\frac{.785}{19.94}$	CHKD. BY:			
C-130-	$\frac{.530}{13.46}$	$\frac{.393}{9.98}$	$\frac{.952}{24.18}$	APPRD. BY:			
C-136-	$\frac{.282}{7.16}$	$\frac{.306}{7.77}$	$\frac{.741}{18.82}$				
C-140-	$\frac{.592}{15.04}$	$\frac{.468}{11.89}$	$\frac{1.056}{26.82}$				



DWG. NO. A CUSTOMER DWG.

# Mouser Electronics

Authorized Distributor

Click to View Pricing, Inventory, Delivery & Lifecycle Information:

[Molex:](#)

[19069-0624](#)