

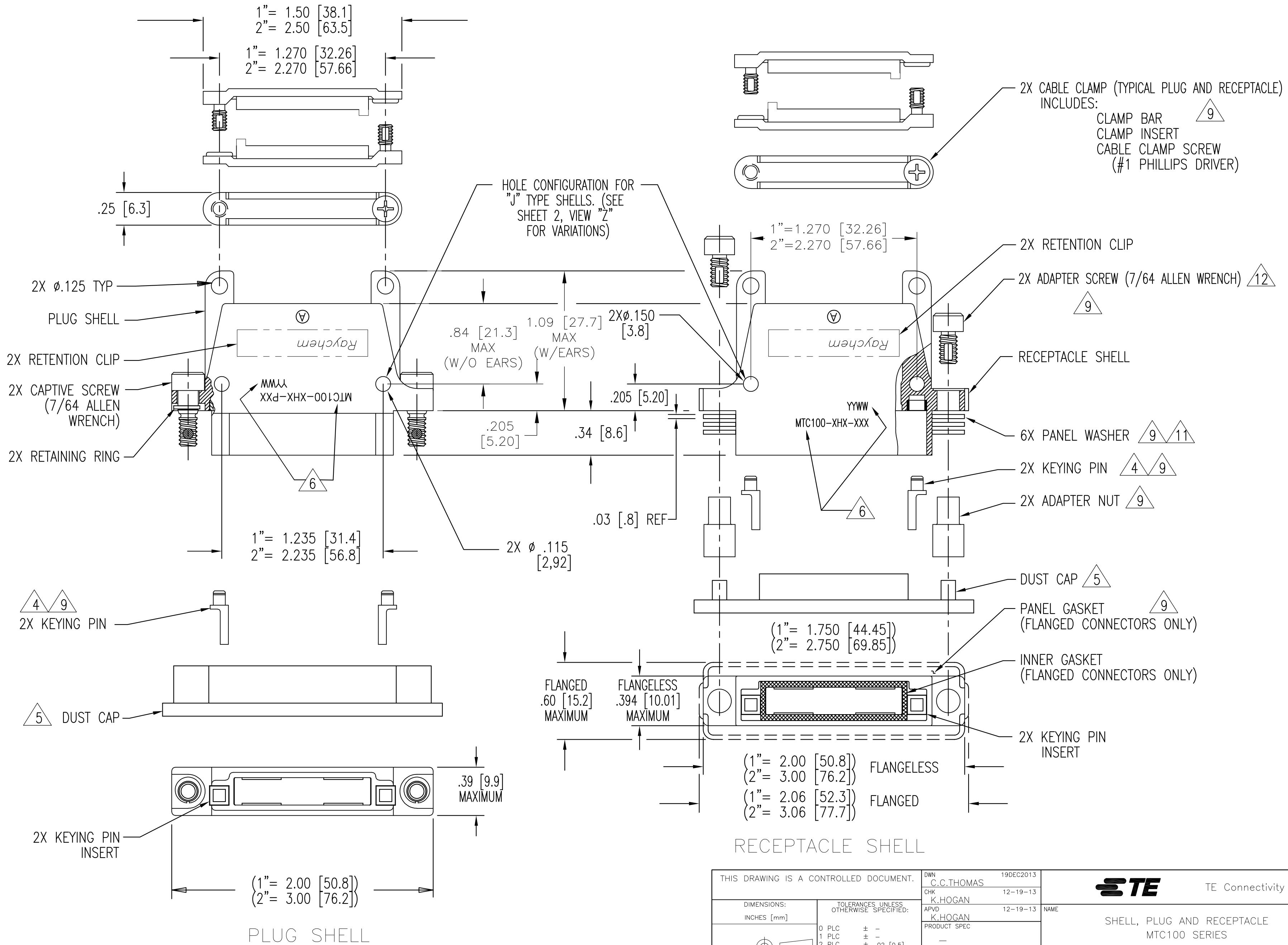
P	LTR	DESCRIPTION	DATE	DWN	APVD
	W	REV PER ECO 13-019993	12-19-13	CT	KH

D

C

B

A



MTC100-XHX-XXX-XXX

THIS DRAWING IS A CONTROLLED DOCUMENT.		DWN C.C.THOMAS 19DEC2013	TE Connectivity			
DIMENSIONS: INCHES [mm]		CHK K.HOGAN 12-19-13				
		APVD K.HOGAN 12-19-13	NAME			
		PRODUCT SPEC	SHELL, PLUG AND RECEPTACLE MTC100 SERIES			
TOLERANCES UNLESS OTHERWISE SPECIFIED:		APPLICATION SPEC	SIZE	CAGE CODE	DRAWING NO	RESTRICTED TO
0 PLC ± -		—	A2	00779	C=MTC100-XHX-XXX-XXX	—
1 PLC ± -		—	CUSTOMER DRAWING			
2 PLC ± .02 [0.5]		—	SCALE NTS			
3 PLC ± .005 [0.13]		—	SHEET 1 of 3			
4 PLC ± -		—	REV W			
ANGLES ± -		—				
FINISH		—				

THIS DRAWING IS UNPUBLISHED.

RELEASED FOR PUBLICATION

© COPYRIGHT

By

ALL RIGHTS RESERVED.

1. PART NUMBER VARIABLES:

(NOT ALL POSSIBLE CONFIGURATIONS SHOWN ON THIS DRAWING ARE AVAILABLE AS STANDARD PRODUCTS. PLEASE CHECK WITH RAYCHEM TO CONFIRM AVAILABILITY.)

MTC100-XHX-XXX-XXX

MODIFICATIONS (see table I) (THIS SPACE BLANK IF NO MODIFICATION IS APPLICABLE)

1= W/O CABLE CLAMP AND W/O EARS ON SHELL

2= WITH CABLE CLAMP AND EARS ON SHELL

3= W/O CABLE CLAMP AND WITH EARS

4= WITH FLAT CABLE CLAMP (SEE VIEW V) AND EARS ON SHELL

1= BLACK ANODIZED (WHITE MARKING)

2= ELECTROLESS NICKEL (BLACK MARKING)

3= CADMIUM OVER NICKEL UNDERPLATE (BLACK MARKING)

P= PLUG

R= FLANGELESS RECEPTACLE

F= FLANGED RECEPTACLE: STANDARD ("J" TYPE) HAS NON CONDUCTIVE FLUOROSILICONE GASKET SHIELDED ("S" TYPE) HAS CONDUCTIVE FLUOROSILICONE GASKET

1= 1 INCH

2= 2 INCH

J= STANDARD TYPE

S= SHIELDED

Y= SPECIAL TYPE: REFER TO INDIVIDUAL SPECIFICATION CONTROL DRAWINGS FOR DESCRIPTIONS

2. MATERIAL:

A) SHELL

ALUMINUM ALLOY PER ASTM B85

B) RETENTION CLIP

COPPER ALLOY 172 PER ASTM B194

C) ADAPTER SCREW OR CAP SCREW

STAINLESS STEEL PER SAE-AMS-QQ-S-763, 300 SERIES

D) ADAPTER NUT OR RETAINER BUSHING

STAINLESS STEEL PER SAE-AMS-QQ-S-763, 300 SERIES

E) PANEL OR LOCK WASHER

STAINLESS STEEL PER SAE-AMS-QQ-S-763 OR ASTM B240, 300 SERIES

F) KEYING PIN

HIGH GRADE POLYARYLENE THERMOPLASTIC, MOLDED

G) KEY PINS INSERT

HIGH GRADE POLYARYLENE THERMOPLASTIC, MOLDED

H) CLAMP BAR

STAINLESS STEEL PER SAE-AMS-QQ-S-763, 300 SERIES

J) CLAMP INSERT

SILICONE ELASTOMER PER MIL-R-25988

K) CAPTIVE SCREW

STAINLESS STEEL PER SAE-AMS-QQ-S-763, 300 SERIES

L) RETAINING RING

COPPER ALLOY 172 PER ASTM B194

3. FINISH:

APPLIES TO NICKEL PLATED CONNECTORS

APPLIES TO CADMIUM PLATED CONNECTORS

APPLIES TO BLACK ANODIZED CONNECTORS

A) SHELL

NICKEL PLATED PER SAE-AMS-C-26074 CLASS 3, GRADE B

CADMIUM PLATED PER SAE-AMS-QQ-P-416 OVER NICKEL UNDERPLATE

BLACK ANODIZED PER MIL-A-8625, TYPE II, CLASS 2

B) RETENTION CLIP

NICKEL PLATED PER SAE-AMS-C-26074 CLASS 2, .00002 MINIMUM

CADMIUM PLATED PER SAE-AMS-QQ-P-416

NICKEL PLATED PER SAE-AMS-C-26074 CLASS 2, .00002 MINIMUM

C) ADAPTER OR CAP SCREW

PASSIVATED PER SAE-AMS-2700

CADMIUM PLATED PER SAE-AMS-QQ-P-416

PASSIVATED PER SAE-AMS-2700

D) ADAPTER NUT OR RETAINER BUSHING

PASSIVATED PER SAE-AMS-2700

CADMIUM PLATED PER SAE-AMS-QQ-P-416

PASSIVATED PER SAE-AMS-2700

E) PANEL OR LOCK WASHER

PASSIVATED PER SAE-AMS-2700

CADMIUM PLATED PER SAE-AMS-QQ-P-416

PASSIVATED PER SAE-AMS-2700

F) CLAMP BAR

PASSIVATED PER SAE-AMS-2700

CADMIUM PLATED PER SAE-AMS-QQ-P-416

PASSIVATED PER SAE-AMS-2700

G) CAPTIVE SCREW

PASSIVATED PER SAE-AMS-2700

CADMIUM PLATED PER SAE-AMS-QQ-P-416

PASSIVATED PER SAE-AMS-2700

H) RETAINING RING

NICKEL PLATED PER SAE-AMS-C-26074

CADMIUM PLATED PER SAE-AMS-QQ-P-416

NICKEL PLATED PER SAE-AMS-C-26074

4. FOR MOUNTING / MATING AND KEYING INFORMATION, SEE RAYCHEM DRAWING D652-0012.

5. DUST CAP SUPPLIED WITH EACH PLUG OR RECEPTACLE. NO DUST CAPS ARE SUPPLIED WHEN SHELLS ARE SHIPPED TO CUSTOMER SPECIFICATION NUMBER 991006.

6. APPROPRIATE PART NUMBER AND DATE CODE ARE STAMPED APPROXIMATELY AS SHOWN.

7. THESE PARTS MEET THE REQUIREMENTS OF RAYCHEM SPECIFICATION C-6111.

8. FLANGED RECEPTACLE CONNECTORS PROPERLY MATED AND TORQUED TO 9 INCH POUNDS WILL EXHIBIT AN AIR LEAK RATE NOT EXCEEDING .5 CC / SECOND AT 30 PSI AND 25° C. (APPLICABLE ONLY TO FLANGED RECEPTACLES WITH PIN INSERTS)

9. THESE ITEMS ARE SUPPLIED UNASSEMBLED.

10. SEE TABLE II & TABLE 4 SHEET 3, WEIGHTS ARE WITHOUT DUST CAP.

11. THIS RECEPTACLE IS REAR PANEL MOUNTED BY REMOVING AS MANY PANEL WASHERS AS REQUIRED TO ACCOMMODATE THE THICKNESS OF THE PANEL BEING USED. (SEE TABLE III)

12. RECEPTACLE ADAPTER SCREWS (CAP SCREWS) ARE TO BE TORQUED TO 15±1 INCH-LBS (1.0±0.07 N-M)

LOC

DIST

REVISIONS

P

LTR

DESCRIPTION

DATE

DWN

APVD

—

—

SEE SHEET #1

—

—

—

RECEPTACLE SHOWN (HOLE IN PLUG HAS SAME CONFIGURATION AND DIMENSION)

0.645
[16.38]

HOLE CONFIGURATION FOR ALL "S" TYPE SHELLS AND FLANGED "J" TYPE RECEPTACLE SHELLS

VIEW "Z"

FLAT CABLE CLAMP

VIEW "V"

2X TRIANGULAR KEYING PIN

APPLIES TO -014 MODIFICATION (see table I)

VIEW "W"

TABLE III

PANEL THICKNESS

NUMBER OF PANEL WASHERS FOR EACH FASTENER

0.031/0.036
[0.8]/[0.9]

2

0.062/0.067
[1.5]/[1.7]

1

0.093/0.097
[2.3]/[2.4]

0

2X CAP SCREW (7/64 ALLEN WRENCH)

2X LOCK WASHER

(SHELL)

6X PANEL WASHER

2X RETAINER BUSHING

MTC50 HARDWARE APPLIES TO -020 MODIFICATION (see table I)

VIEW "Y"

TABLE I (MODIFICATIONS)

MODIFICATION DASH NUMBER

DESCRIPTION

-001

SAME AS STANDARD ASSEMBLY WITH EARS EXCEPT WITHOUT CABLE CLAMPS

-007

SAME AS STANDARD ASSEMBLY EXCEPT METAL PARTS ARE PLATED CADMIUM OVER NICKEL, SUPPLIED WITH MTC50 MOUNTING/ MATING HARDWARE (SEE VIEW "Y")

-014

SAME AS STANDARD EXCEPT ADDITIONALLY TRIANGULAR KEYING PINS INCLUDED (SEE VIEW "W")

-020

SAME AS STANDARD EXCEPT SUPPLIED WITH MTC50 MOUNTING/MATING HARDWARE (SEE VIEW "Y")

-028

SAME AS STANDARD ASSEMBLY EXCEPT SUPPLIED WITHOUT HARDWARE

THIS DRAWING IS A CONTROLLED DOCUMENT.

DIMENSIONS:
INCHES [mm]

TOLERANCES UNLESS OTHERWISE SPECIFIED:

0 PLC ± -

1 PLC ± -

2 PLC ± .02 [0.5]

3 PLC ± .005 [0.13]

4 PLC ± -

ANGLES ± -

FINISH -

DWN
C.C.THOMAS
CHK
K.HOGAN
APVD
K.HOGAN
PRODUCT SPEC
APPLICATION SPEC
WEIGHT
CUSTOMER DRAWING

19DEC2013
12-19-13
12-19-13
—
—
—
—
—

TE Connectivity

SHELL, PLUG AND RECEPTACLE
MTC100 SERIES

SIZE
A2

CAGE CODE
00779

DRAWING NO
C=MTC100-XHX-XXX-XXX

RESTRICTED TO
—

SCALE
NTS

SHEET
2 of 3

REV
W

1471-9 (3/11)

1:49pm

D

D

C

C

B

B

A

A

THE FOLLOWING TABLE CONSISTS OF WEIGHTS
FOR THESE SPECIFIC PART NUMBERS.



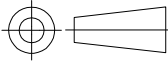
TABLE II 	
PART NUMBER	WEIGHT MAXIMUM GRAMS
MTC100-JH1-F32	30.8
MTC100-JH1-P32	23.8
MTC100-JH1-R32	27.3
MTC100-JH2-F32	43.7
MTC100-JH2-P32	34.2
MTC100-JH2-R32	38.3
MTC100-SH1-F33	24.2 *
MTC100-SH1-P33	16.1 *
MTC100-SH1-R33	20.3 *
MTC100-SH2-F33	32.3 *
MTC100-SH2-P33	22.7 *
MTC100-SH2-R33	27.0 *

TABLE 4 	
PART NUMBER	WEIGHT MAXIMUM GRAMS
MTC100-JH1-F22	30.8
MTC100-JH1-P22	23.8
MTC100-JH1-R22	27.3
MTC100-JH2-F22	43.7
MTC100-JH2-P22	34.2
MTC100-JH2-R22	38.3
MTC100-SH1-F23	24.2 *
MTC100-SH1-P23	16.1 *
MTC100-SH1-R23	20.3 *
MTC100-SH2-F23	32.3 *
MTC100-SH2-P23	22.7 *
MTC100-SH2-R23	27.0 *

* = WEIGHT DOES NOT INCLUDE CABLE CLAMP

THIS DRAWING IS A CONTROLLED DOCUMENT.

DIMENSIONS:
INCHES [mm]



MATERIAL

—

TOLERANCES UNLESS OTHERWISE SPECIFIED:

0 PLC ± —

1 PLC ± —

2 PLC ± .02 [0.5]

3 PLC ± .005 [0.13]

4 PLC ± —

ANGLES ± —

FINISH

—

DWN
C.C.THOMAS
19DEC2013

CHK
K.HOGAN
12-19-13

APVD
K.HOGAN
12-19-13

PRODUCT SPEC

APPLICATION SPEC

—

WEIGHT

—

CUSTOMER DRAWING

TE Connectivity

NAME

SHELL, PLUG AND RECEPTACLE
MTC100 SERIES

SIZE

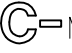
CAGE CODE

DRAWING NO

RESTRICTED TO

A2

00779

MTC100-XHX-XXX-XXX

—

SCALE

NTS

SHEET

3 of 3

REV

W

MTC100-XHX-XXX-XXX

Mouser Electronics

Authorized Distributor

Click to View Pricing, Inventory, Delivery & Lifecycle Information:

[TE Connectivity:](#)

[699681-000](#)