
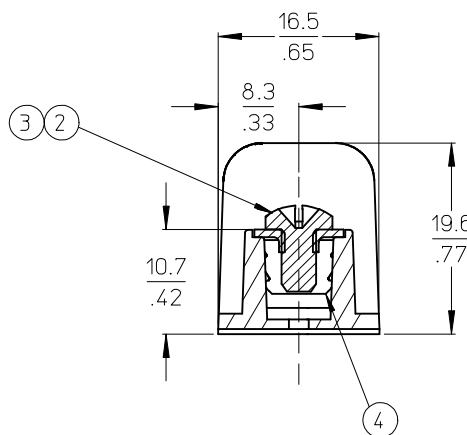


1. MATERIAL: SEE TABLE
2. FINISHES: SEE TABLE
3. PRODUCT SPECIFICATION: NOT REQUIRED
4. PACKAGING: NOT REQUIRED
5. MATES WITH: NONE
6. *XX* REFERS TO QTY. OF CIRCUITS
7. ROHS COMPLIANT 



REF. -50 OPTION

The diagram shows a perspective view of four interlocking metal clips arranged in a row. The rightmost clip is labeled 'BEAU 63A' and 'RU'. A dashed line connects the top of this clip to a detailed view of the 'REF. -50 OPTION' component, which is a small metal fitting with a cross-shaped slot on top.

UPDATE MAT. DESCRIP. EC NO: WNA2009-0085 DFWIN: JENC INAS CHKD: CYORK APPR: JWAACNEIL	QUALITY SYMBOLS ▽=0 ▽=0	DESCRIPTION 2008/11/25 2008/12/15 2008/12/15	GENERAL TOLERANCES (UNLESS SPECIFIED)	mm		INCH		DIMENSION STYLE MM/IN		SCALE 2:1	DESIGN UNITS INCH	THIRD ANGLE PROJECTION			
				4 PLACES ± ---		± ---		DRAWN BY R. STONE		DATE 2002/10/24		TITLE 11.13/.438" PCB BTS 600V MTG ENDS, CLOSED BACKS (63A1XX)			
				3 PLACES ± ---		± .005		CHECKED BY R. KEMP		DATE 2002/10/25					
				2 PLACES ± 0.13		± .01		APPROVED BY P. WALTZ		DATE 2002/10/28		MOLEX MOLEX INCORPORATED			
				1 PLACE ± 0.3		± ---		MATERIAL NO.		DOCUMENT NO.					SHEET NO.
				ANGULAR ± 2 °				SEE CHART		SD-38630-001		1 OF 1			
				DRAFT WHERE APPLICABLE MUST REMAIN WITHIN DIMENSIONS				SIZE B		THIS DRAWING CONTAINS INFORMATION THAT IS PROPRIETARY TO MOLEX INCORPORATED AND SHOULD NOT BE USED WITHOUT WRITTEN PERMISSION					

Mouser Electronics

Authorized Distributor

Click to View Pricing, Inventory, Delivery & Lifecycle Information:

[Molex:](#)

[38630-0416](#)