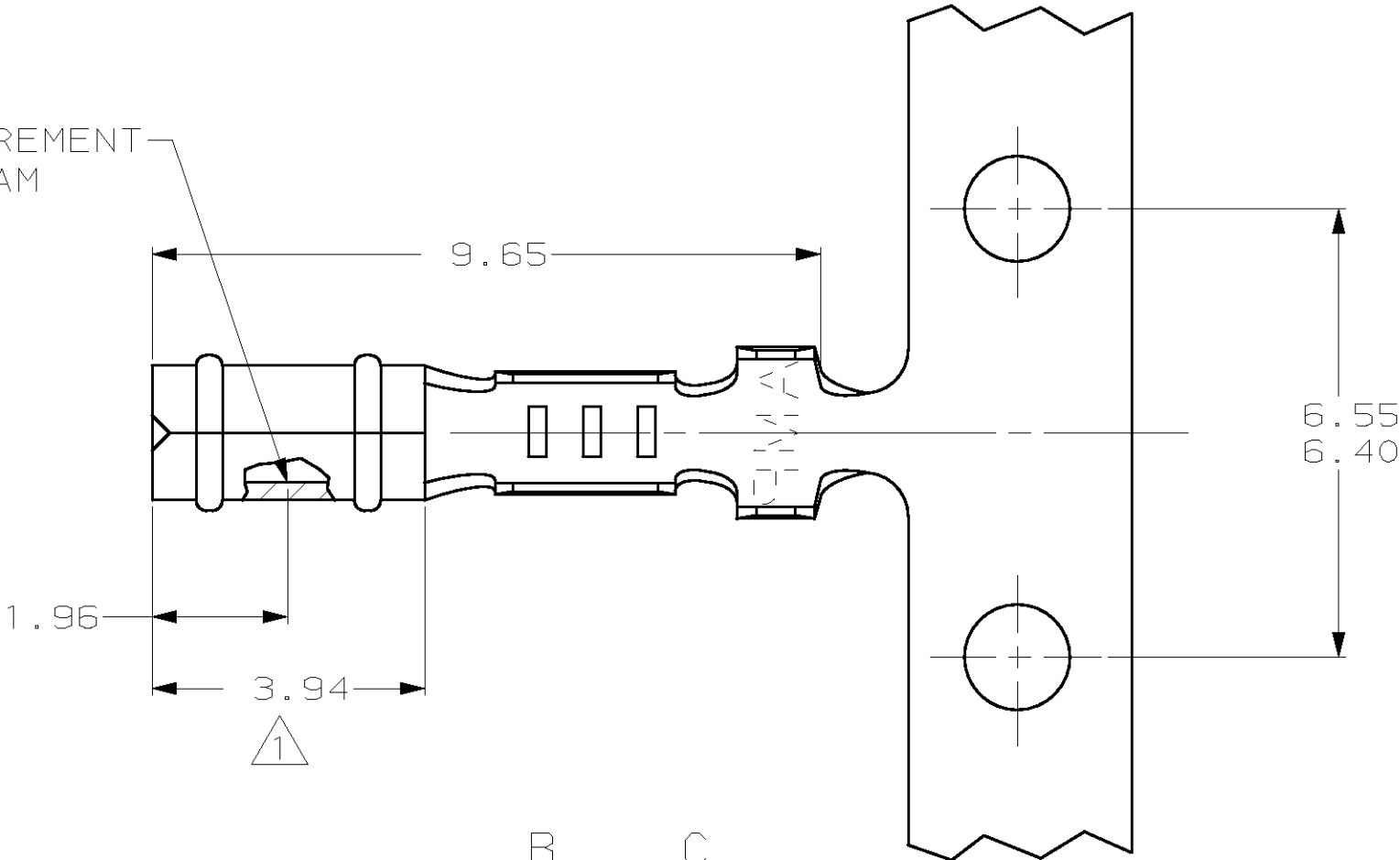


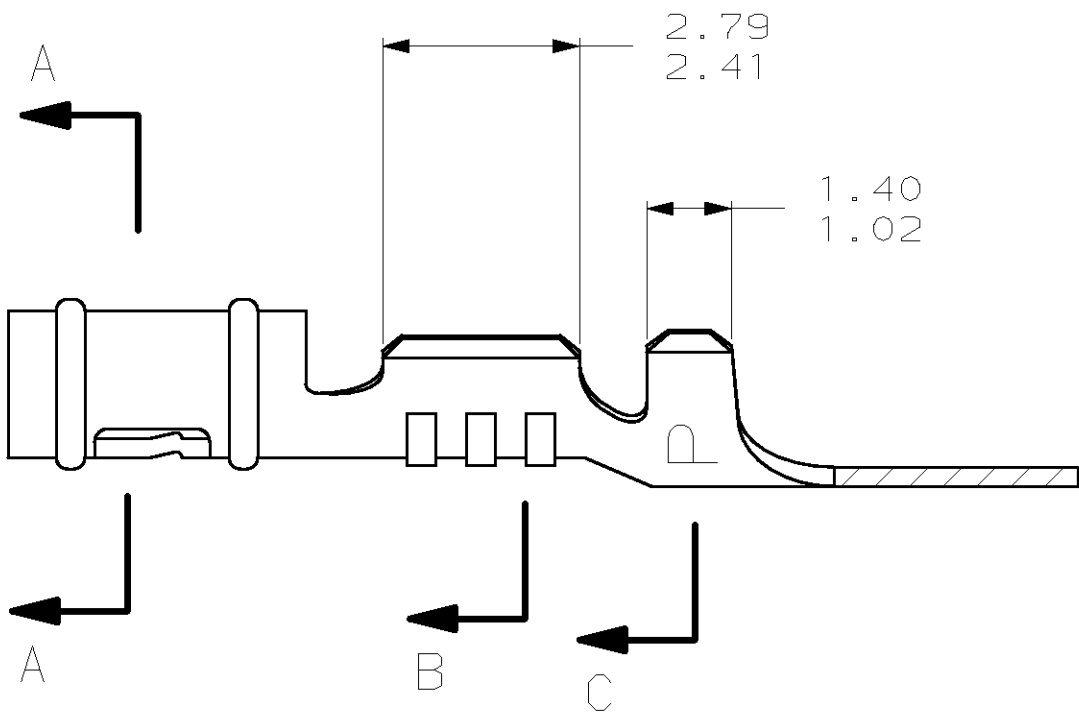
LOC		DIST		REVISIONS			
P	LTR	DESCRIPTION		DATE	DWN	APVD	
	V	REV & REDWN PER EC 0L30-0146-97		5-15-97	TB	RS	

- 1 0.00076 MIN SELECTIVE GOLD PLATING ON INSIDE OF RECEPTACLE OVER NICKEL OVER ALL UNDERPLATE.
2. WIRE RANGE: 0.12 - 0.4 MM² (26 - 22 AWG)
3. INSULATION RANGE: 0.89 - 1.65

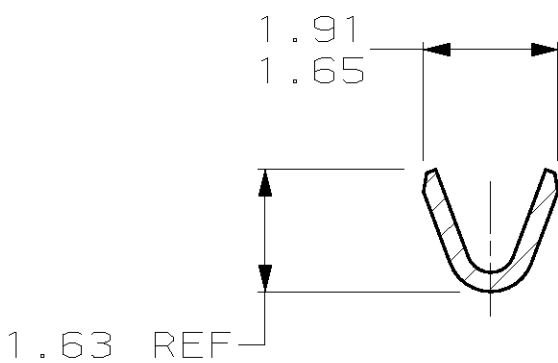
POINT OF MEASUREMENT
1 90° FROM SEAM



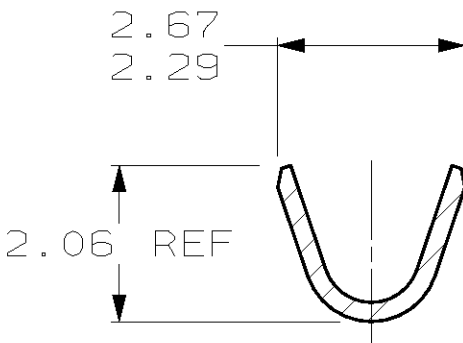
B
C



SECTION A-A



SECTION B-B



SECTION C-C

1	0.25 BE COPPER	60888-4
MATTE TIN	0.25 BE COPPER	60888-3
2	0.25 PH BRZ	60888-2
PRE-TIN	0.25 PH BRZ	60888-1
FINISH	MATERIAL	PART NUMBER

1.359	.0535	1.91	.075	2.79	.110	-	-
1.02	.040	1.65	.065	2.67	.105	-	-
0.89	.035	1.63	.064	2.41	.095	9.65	.380
0.25	.010	1.486	.0585	2.29	.090	6.55	.258
0.13	.005	1.47	.058	2.06	.081	6.40	.252
0.00076	.000030	1.40	.055	1.96	.077	3.94	.155
MM	IN	MM	IN	MM	IN	MM	IN

CONVERSION TABLE

METRIC

THIS DRAWING IS A CONTROLLED DOCUMENT.

DIMENSIONS:
mm

MATERIAL
SEE TABLE

TOLERANCES UNLESS OTHERWISE SPECIFIED:

0 PLC ±-
1 PLC ±-
2 PLC ±0.13
3 PLC ±-
4 PLC ±-
ANGLES ±-

FINISH
SEE TABLE

DWN
T. BECK
5-15-97

CHK
R. SWING
5-15-97

APVD
A. BEDDICK
8-08-97

PRODUCT SPEC
-

APPLICATION SPEC
-

WEIGHT
-

CUSTOMER DRAWING

AMP

AMP Incorporated
Harrisburg, PA 17105-3608

NAME
RECEPTACLE, .058 DIAMETER,
26-22 AWG, .035-.065
INSULATION, P.C. CONTACT

SIZE
A2

CAGE CODE
00779

DRAWING NO
60888

RESTRICTED TO
-

SCALE
10:1

SHEET
1

OF
1

REV
V

Mouser Electronics

Authorized Distributor

Click to View Pricing, Inventory, Delivery & Lifecycle Information:

[TE Connectivity:](#)

[60888-1](#) [60888-4](#)