

MICRO SWITCH

FREEPORT ILLINOIS U.S.A.
A DIVISION OF HONEYWELL

FED MFG CODE 91929

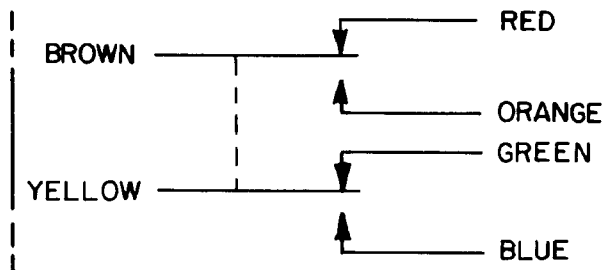
SWITCH - ENCLOSED

CATALOG LISTING

602EN541

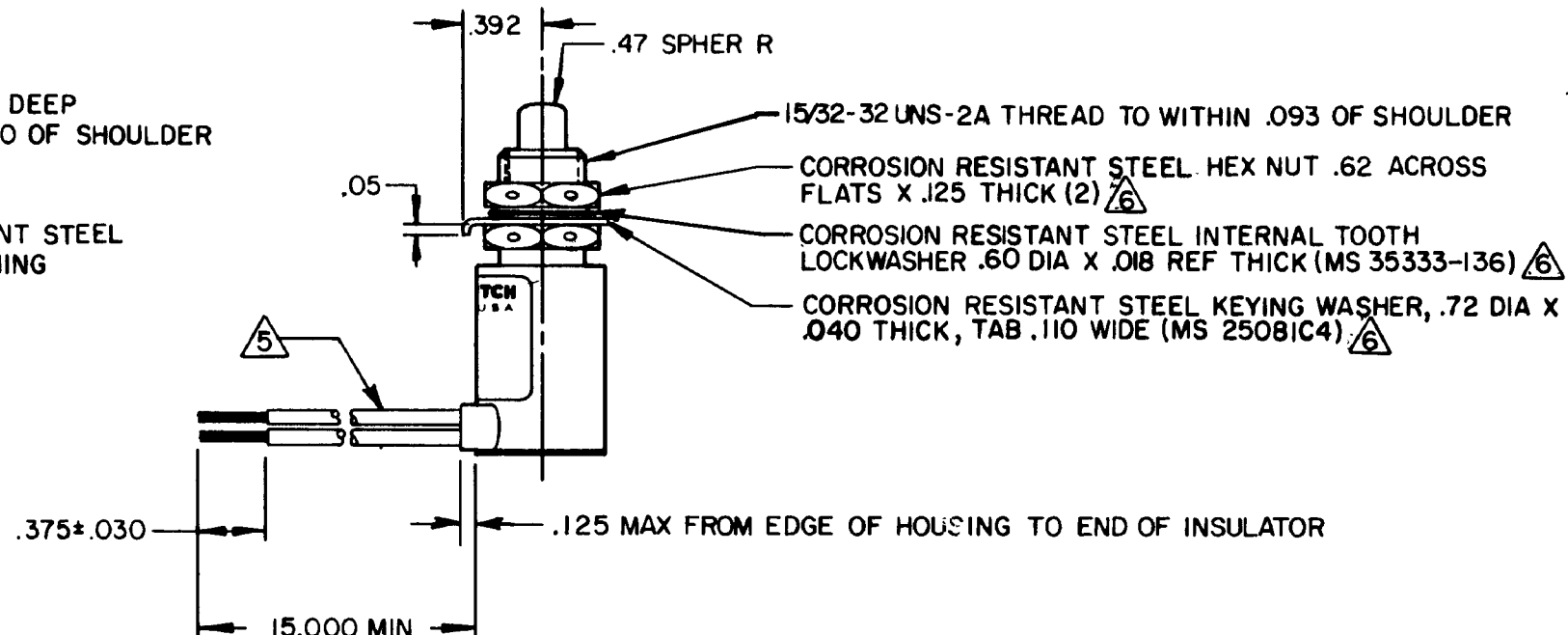
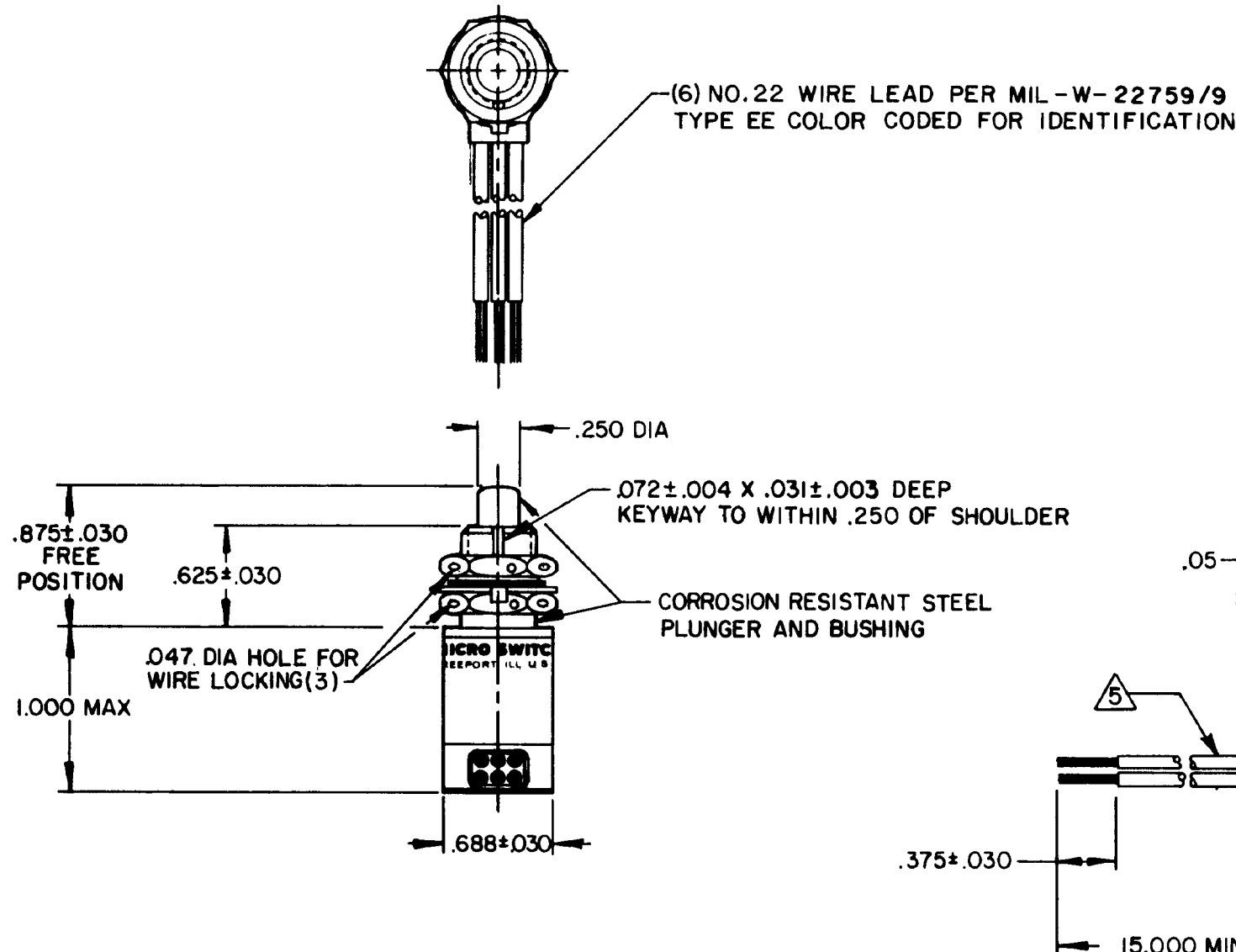
ACTRON DRAWING

4090010-2



CIRCUIT DIAGRAM

602EN541
 M
 DRAWING NUMBER
 3
 ISSUE
 8
 REVISIONS
 A PR 14312 JAS 5 NOV 85
 B CO82233 DL T 11 DEC 95
 CHECK GLL 8 NOV 85
 CHECK 14 NOV 85
 CHECK CEC 14 NOV 85
 DRAWN JAS 5 NOV 85
 FO-32851-A



THIS DRAWING COVERS A PROPRIETARY ITEM AND IS THE PROPERTY OF MICRO SWITCH, A DIVISION OF HONEYWELL. THIS DRAWING IS NOT TO BE COPIED OR USED WITHOUT THE APPROVAL OF MICRO SWITCH		THIRD ANGLE PROJECTION		SCALE FULL	
CHARACTERISTICS		ELECTRICAL DATA		DO NOT SCALE PRINT	
OPERATING FORCE-----3-6 LB		CONTACT ARRANGEMENT		TOLERANCES	
FULL OVERTRAVEL FORCE-----17 LB MAX		SPDT (2)		APPLY TO DESIGN UNITS CONVERSIONS ARE ONLY FOR REFERENCE UNLESS NOTED TOLERANCES ARE 1	
RELEASE FORCE-----2 LB MIN		28 VDC		DIM mm TOL mm/in DIM in TOL mm/in	
PRETRAVEL-----.040 MAX		LOAD	SEA LEVEL	50,000 FT.	NO PLACES X 1/04
DIFFERENTIAL TRAVEL-----.020 MAX		RES	7	7	ONE PLACE X,X 0 41/018 X X 0 81/03
OVERTRAVEL-----.125 MIN		IND	4	2.5	TWO PLACES X,XX 0 16/008 X XX 0 38/015
		MOTOR	4		THREE PLACES X,XXX 0 13/005
				DESIGN UNITS SI METRIC <input type="checkbox"/> US CUSTOMARY <input checked="" type="checkbox"/>	
				RAW MATERIAL--COMMERCIAL STANDARD MICRO SWITCH STANDARDS APPLY	
				DIMENSIONS ARE TO BE NET BEFORE PROTECTIVE COATINGS ARE APPLIED	
				WEIGHT 4.0 OZ MAX	

- NOTES
- 1 - CORROSION RESISTANT STEEL ENCLOSURE
 - 2 - SWITCH SEALED PER MIL-S-8805 SYMBOL 4
 - 3 - COINCIDENCE OF OPERATING AND RELEASING POINTS: .010 OF PLUNGER TRAVEL
 - 4 - CIRCUIT DIAGRAM, MICRO IDENTIFICATION AND CATALOG LISTING ARE SHOWN ON NAMEPLATE
- 5 - COLORS OF LEAD WIRE MUST BE CONTINUOUSLY IDENTIFIABLE THROUGHOUT THE WIRE LENGTH, STARTING AT A POINT 0.5 INCHES FROM THE END OF THE BOOT
- 6 - HARDWARE MAY BE PACKAGED UNASSEMBLED PER MIL-S-8805

Mouser Electronics

Authorized Distributor

Click to View Pricing, Inventory, Delivery & Lifecycle Information:

[Honeywell:](#)

[602EN541](#)