

DO NOT  
SCALE FROM  
THIS PRINTDESIGNED & DIMENSIONED  
IN MILLIMETERS[INCHES]

GRFX-P-C-XX-XXXX-XXX-X-X-XX

## SERIES

GRF1-: GRF 50 OHM CONNECTORS  
GRF7-: GRF 75 OHM CONNECTORS  
(SEE SHT 2, TABLE 2)

## GENDER

-P: PLUG

## CABLE

-C: CABLE

## No OF POSITIONS

-02, -04, -06, -08

## LENGTH

-XXXX (IN MILLIMETERS)

0100 MIN (SEE NOTE 4)

## PLATING

BLANK: 30μ" GOLD CENTER CONTACT  
3μ" GOLD OUTER CONTACT  
-GF: 10μ" GOLD CENTER CONTACT  
3μ" GOLD OUTER CONTACT  
100μ" NICKEL REMAINING PARTS  
(SEE SHT 2, TABLE 3)

## SCREW OPTION

-S: CAPTIVE PANEL SCREWS  
BLANK: NO SCREWS

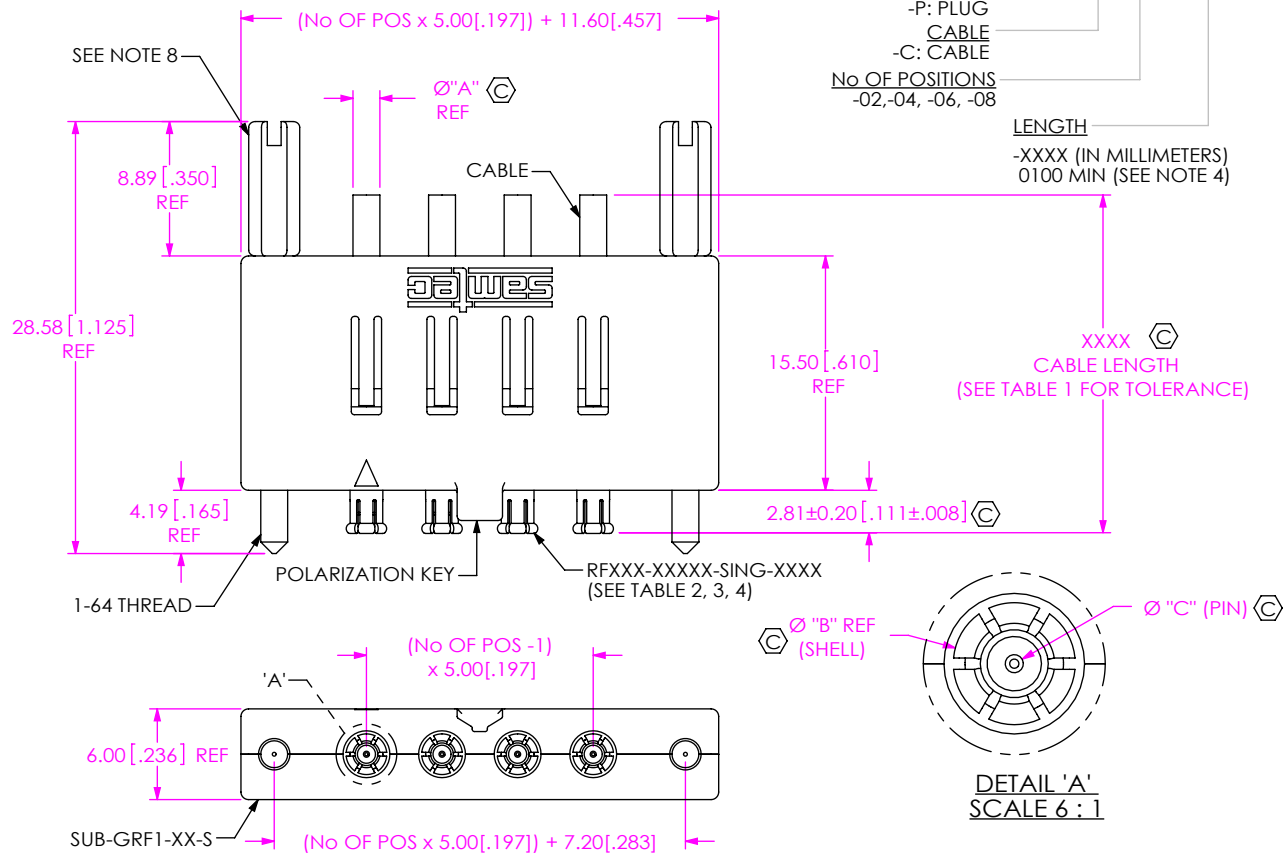
## END OPTION

-S: SINGLE (SEE NOTE 5)  
-D: DOUBLE

## TERMINATION

-C1: USE CCA-316 COAX CABLE  
\* -CA2: USE CCA-178 COAX CABLE  
-CA3: USE CCA-179 COAX CABLE  
\* -C12: USE TCF-3075F-01-COAX CABLE  
\* -CS5: USE MWC-2550-01-COAX CABLE  
(SEE SHT 2, TABLE 4)

\*NOT RELEASED FOR PRODUCTION.



## NOTES:

1. Ⓢ REPRESENTS A CRITICAL DIMENSION.
2. USE REMOVAL TOOL #CAT-EX-GRF1-01 TO REMOVE CABLES FROM ASSEMBLY.
3. MINIMUM PULL OUT FORCE: 5 LBS.
4. CABLE LENGTHS LONGER THAN 1000 MILLIMETERS ARE NOT SUPPORTED BY S.I. TEST DATA.
5. SINGLE ENDED ASSEMBLIES BLUNT CUT/NON PREPPED ON CUT END.
6. ASSEMBLY TO BE 100% TESTED FOR OPENS & SHORTS.
7. ASSEMBLY TO BE 100% HI-POT TESTED PER TABLE 1.
8. RECOMMENDED TORQUE ON MOUNTING SCREWS: 2-4 IN-OZ.
9. FOR HEAT SHRINK PROCESS, PLEASE REFER TO THE SUB PRINT GRFS-P-C-X-ST-CA1 FOR MORE DETAILS.

TABLE 1		
CABLE	CABLE CUT LGTH	HI-POT
STYLE	"SUBTRACTOR"	DCV
-13GPX	5.1 [0.20]	1000
-V3SPX	5.7 [0.22]	1000
-73SPX	5.5 [0.22]	1000
-7GSPX	5.5 [0.22]	1000

TABLE 2				
SERIES	"A"	"B"	"C"	RFXXX-13GPX-XXXX-XXXX
GRF1-	2.53 [0.100]	2.70 [0.106]	0.40 [0.016]	RF316-13GPX-XXXX-XXXX
	1.80 [0.071]			*RF178-13GPX-XXXX-XXXX
	2.06 [0.081]			*RF25S-V3SPX-XXXX-XXXX
GRF7-	2.54 [0.100]	2.60 [0.102]	0.32 [0.013]	RF179-73SPX-XXXX-XXXX
	2.16 [0.085]			*RF30S-7GSPX-XXXX-XXXX

\*NOT RELEASED FOR PRODUCTION

UNLESS OTHERWISE SPECIFIED,  
DIMENSIONS ARE IN MILLIMETERS.

## TOLERANCES ARE:

DECIMALS ANGLES

.X: ±0.3 [0.01]

.XX: ±0.13 [0.005]

.XXX: ±0.051 [0.0020]

## MATERIAL:

COVERS: POLYCARBONATE  
PLUG: SHELL: BeCu, CONTACT: BRASS  
CABLE: -C1: RG316  
-CA2: RF178  
-CA3: RG179  
-C12: TCF-3075F-01-01  
-CS5: MWC-2550-01

## PROPRIETARY NOTE

THIS DOCUMENT CONTAINS CONFIDENTIAL AND PROPRIETARY INFORMATION AND ALL DESIGN, MANUFACTURING, REPRODUCTION, USE, PATENT RIGHTS AND SALES RIGHTS ARE EXPRESSLY RESERVED BY SAMTEC, INC. THIS DOCUMENT SHALL NOT BE DISCLOSED, IN WHOLE OR PART, TO ANY UNAUTHORIZED PERSON OR ENTITY NOR REPRODUCED, TRANSFERRED OR INCORPORATED IN ANY OTHER PROJECT IN ANY MANNER WITHOUT THE EXPRESS WRITTEN CONSENT OF SAMTEC, INC.

DO NOT SCALE DRAWING

SHEET SCALE: 2:1

**samtec**520 PARK EAST BLVD, NEW ALBANY, IN 47150  
PHONE: 812-944-6733 FAX: 812-948-5047  
e-Mail info@SAMTEC.com code 55322DESCRIPTION:  
RF GANGED CABLE JACK ASSEMBLY

DWG. NO.

GRFX-P-C-XX-XXXX-XXX-X-X-XX

BY: D PURVIS 9/15/2004 SHEET 1 OF 3

FINAL ASSEMBLY LENGTH TOLERANCE	
LENGTH	TOLERANCE
0000-0050 [0-1.96]	1.0 [.040]
0050-0200 [1.96-7.87]	3.0 [.118]
0200-0500 [7.87-19.69]	5.0 [.197]
0500-1100 [19.69-43.30]	10.0 [.394]
>1100[43.30]	±1%

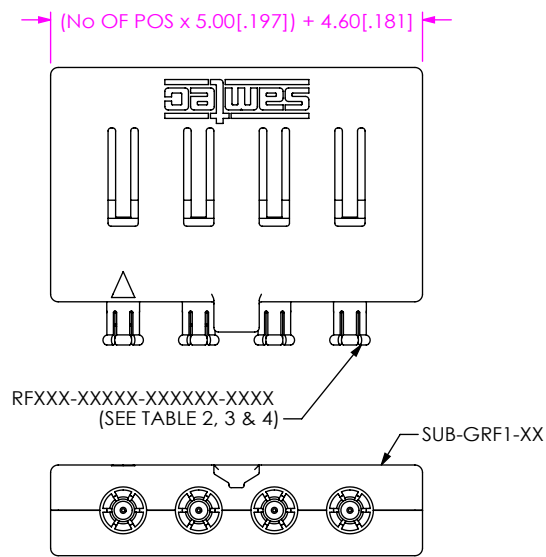


FIG 2  
GRFX-P-C-04-XXXX-CXX-S SHOWN  
[DIFFERENT AS SHOWN, OTHERWISE SAME AS FIG 1]

TABLE 3 (PLATING, SEE NOTE 5)		
SERIES	BLANK	-GF
GRF1-	RF316-13GP1-XXXX-XXXX	N/A
	RF178-13GP1-XXXX-XXXX	N/A
	RF25S-V3SP1-XXXX-XXXX	*RF25S-V3SP4-XXXX-XXXX
GRF7-	RF179-73SP1-XXXX-XXXX	RF179-73SP4-XXXX-XXXX
	RF30S-7GSP1-XXXX-XXXX	*RF30S-7GSP4-XXXX-XXXX
*NOT RELEASED FOR PRODUCTION		

TABLE 4 (TERMINATION)					
SERIES	-C1	-CA2	-CA3	-C12	-CS5
GRF1-	RF316-13GPX-XXXX-XXXX	*RF178-13GPX-XXXX-XXXX	N/A	N/A	*RF25S-V3SPX-XXXX-XXXX
GRF7-	N/A	N/A	RF179-73SPX-XXXX-XXXX	*RF30S-7GSPX-XXXX-XXXX	N/A
*NOT RELEASED FOR PRODUCTION					

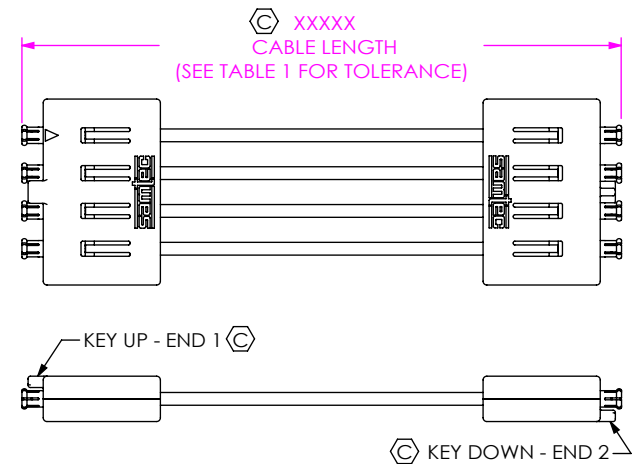


FIG 3  
GRFX-P-C-04-XXXX-CXX-D SHOWN  
[DIFFERENT AS SHOWN, OTHERWISE SAME AS FIG 1]

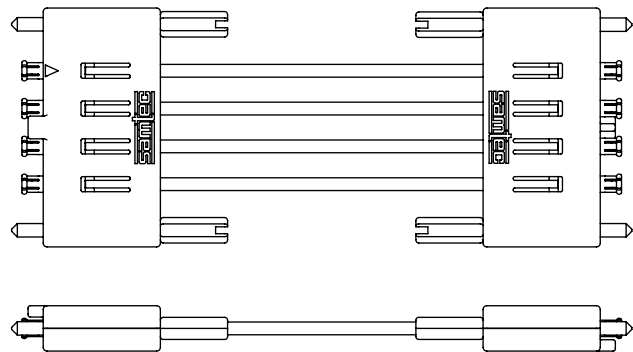


FIG 4  
GRFX-P-C-04-XXXX-CXX-D-S SHOWN  
[DIFFERENT AS SHOWN, OTHERWISE SAME AS FIG 3]

**PROPRIETARY NOTE**

THIS DOCUMENT CONTAINS CONFIDENTIAL AND PROPRIETARY INFORMATION AND ALL DESIGN, MANUFACTURING, REPRODUCTION, USE, PATENT RIGHTS AND SALES RIGHTS ARE EXPRESSLY RESERVED BY SAMTEC, INC. THIS DOCUMENT SHALL NOT BE DISCLOSED, IN WHOLE OR PART, TO ANY UNAUTHORIZED PERSON OR ENTITY NOR REPRODUCED, TRANSFERRED OR INCORPORATED IN ANY OTHER PROJECT IN ANY MANNER WITHOUT THE EXPRESS WRITTEN CONSENT OF SAMTEC, INC.

520 PARK EAST BLVD, NEW ALBANY, IN 47150  
PHONE: 812-944-6733 FAX: 812-948-5047  
e-Mail: info@SAMTEC.com code 55322

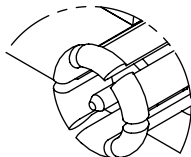
DO NOT SCALE DRAWING

SHEET SCALE: 2:1

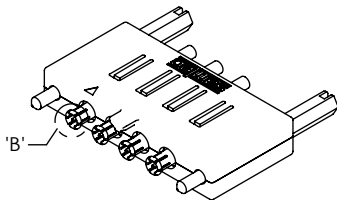
DESCRIPTION:  
RF GANGED CABLE JACK ASSEMBLY

DWG. NO.  
GRFX-P-C-XX-XXXX-XXX-X-X-XX

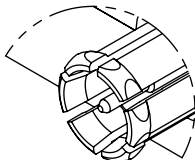
BY: D PURVIS 9/15/2004 SHEET 2 OF 3



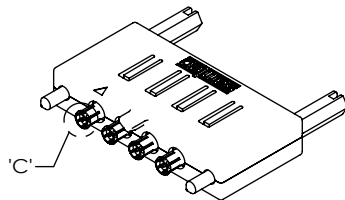
DETAIL 'B'  
SCALE 6 : 1



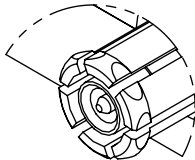
GRF1-P-C-04-XXXX-CXX-S-S-XX



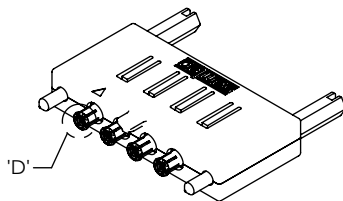
DETAIL 'C'  
SCALE 6 : 1




GRF7-P-C-04-XXXX-CXX-S-S-XX



DETAIL 'D'  
SCALE 6 : 1



\*GRF1-P-C-04-XXXX-CS5-S-S-XX

<p>• PROPRIETARY NOTE •</p> <p>THIS DOCUMENT CONTAINS CONFIDENTIAL AND PROPRIETARY INFORMATION AND ALL DESIGN, MANUFACTURING, REPRODUCTION, USE, PATENT RIGHTS AND SALES RIGHTS ARE EXPRESSLY RESERVED BY SAMTEC, INC. THIS DOCUMENT SHALL NOT BE DISCLOSED, IN WHOLE OR PART, TO ANY UNAUTHORIZED PERSON OR ENTITY NOR REPRODUCED, TRANSFERRED OR INCORPORATED IN ANY OTHER PROJECT IN ANY MANNER WITHOUT THE EXPRESS WRITTEN CONSENT OF SAMTEC, INC.</p>		 <p>520 PARK EAST BLVD, NEW ALBANY, IN 47150 PHONE: 812-944-6733 FAX: 812-948-5047 e-Mail info@SAMTEC.com code 55322</p>	
DO NOT SCALE DRAWING		DESCRIPTION: RF GANGED CABLE JACK ASSEMBLY	
SHEET SCALE: 2:1		DWG. NO. GRFX-P-C-XX-XXXX-XXX-X-X-XX	
		BY: D PURVIS 9/15/2004	SHEET 3 OF 3