

RED INDICATES ORIGINAL

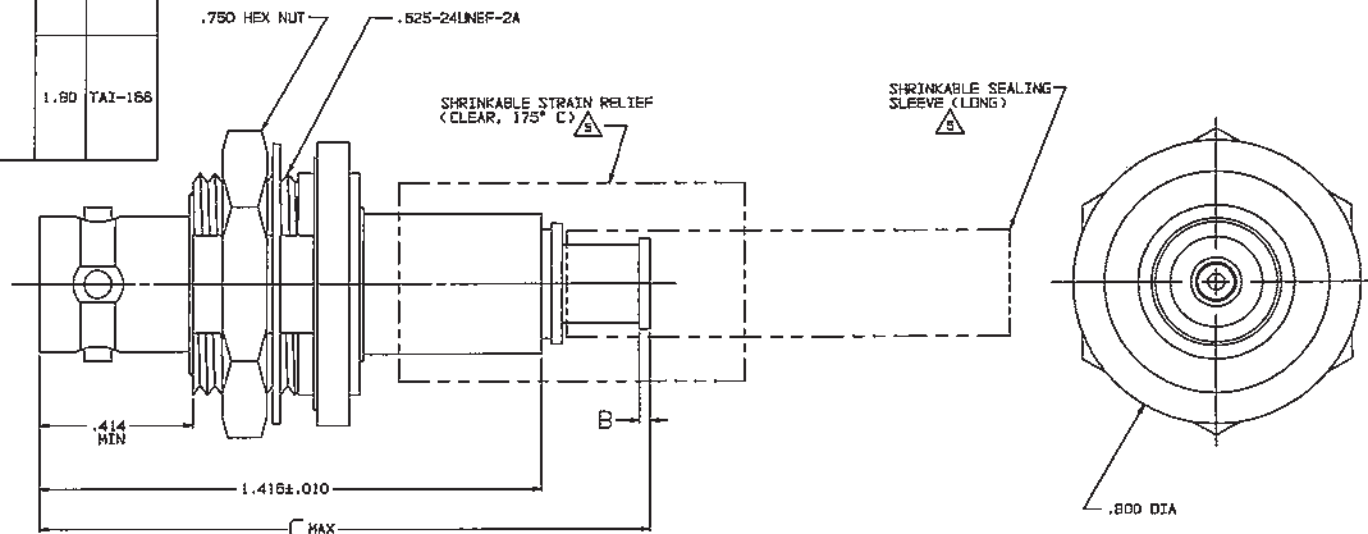
DATA CONTAINED IN THIS DOCUMENT IS
PROPERTY OF TROMPETER ELECTRONICS, INC.
AND SHALL NOT BE DISCLOSED, COPIED OR USED
FOR REPRODUCTION OR MANUFACTURE WITHOUT
EXPRESS WRITTEN PERMISSION.

REVISIONS			3-0203	SH 1
REV	ED	DESCRIPTION	DWN	APPROVED
P	12082	-308 TAI-218 WAS TAI-188; ADDED -308 & -309; SEE ECO	OKC	<i>for</i> 8/12/97

DASH NO	CABLES ACCOMMODATED	A HEX	B DIM	C MAX	ASSEMBLE PER
-201	M17/176-00002				
-202	TWC-78-1				
-203	TWC-124-1A				
-204	10502, RAYCHEM				
-205	TWAC-78-1F2				
-206	782600130, RAYCHEM			1.80	TAI-168
-207	83310, BELDEN				
-208	202-3927, MICRODOT				
-209	202-3942, MICRODOT				
-210	B451, BELDEN				
-211	202-3934, MICRODOT	.344	.030		
-212	2524E0114, RAYCHEM				
-213	TWC-78-2				
-214	TWC-124-2			1.55	TAI-138
-215	BL982, TIMES				
-216	BL1242, TIMES				
-217	GC875TH24H, GRUMMAN				
-218	EDP221988, RAYCHEM				
-219	252601114, RAYCHEM				
-220	GC875RR1, GRUMMAN			1.80	TAI-168
-221	10514, RAYCHEM				
-222	10513, RAYCHEM				
-223	HRS2-1149, HUGHES				

DASH NO	CABLES ACCOMMODATED	A HEX	B DIM	C MAX	ASSEMBLE PER
-301	GC875GC1, GRUMMAN				
-302	GC875GB1, GRUMMAN				
-303	7528A5314, RAYCHEM				TAI-168
-304					
-305	M17/177-00001, THERMATICS	.344	.030	1.80	
-306	TRC-50-2				TAI-218
-307	M17/134-00002				TAI-168
-308	TRC-75-1				TAI-218
-309	TRC-75-2				TAI-168
-309	TRC-50-1				

INCH	MM
.005	0.13
.010	0.25
.030	0.75
.140	3.58
.281	7.14
.284	7.21
.344	8.74
.414	10.52
.630	16.00
.635	16.13
.750	19.05
.800	20.32
1.00	25.40
1.25	31.75
1.416	35.97
1.55	39.37
1.75	44.45
1.80	45.72



-202 SHOWN

1 SHRINKABLE STRAIN RELIEF AND/OR SHRINKABLE SEALING SLEEVE SUPPLIED LOOSE AS FOLLOWS:

- CABLE GROUPS -201 THROUGH -210, -217 THROUGH -303, -305, -307 & -309
1 SHRINKABLE STRAIN RELIEF (1.00 LONG)
1 SHRINKABLE SEALING SLEEVE (1.25 LONG)
- CABLE GROUPS -211 THROUGH -216 AND -305 & -309
1 SHRINKABLE STRAIN RELIEF (1.75 LONG)

- MAX PANEL THK .140
- 4-LUG CONCENTRIC TWINAX/TRIAX TR8, FULL CRIMP INSULATED BULKHEAD MOUNT CABLE RECEPTACLE
- FINISH: TFS-1A (NICKEL)
- ALL DIM ARE IN INCHES

7. EXAMPLE OF COMPLETE MODEL NO:
BJ74CFL-201

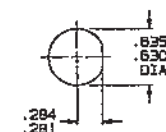
BASIC MODEL NO. CABLE GROUP DASH NO

6. EXAMPLE OF COMPLETE PART NO:
3-0203-201

BASIC PART NO. CABLE GROUP DASH NO



RECOMMENDED
HEX CRIMP
SCALE: 2/1



RECOMMENDED
PANEL OUTPUT
SCALE: 1/1

QTY	DESCRIPTION	PART NUMBER	ITEM
10X UNLESS SPECIFIED			
.05			
.005			
.0005			
.00005			
.000005			
DWN OKC	B-1-97		
CHK <i>for</i>	0-8-97		
ENGR			
APPR <i>for</i>	8/12/97		
TROMPETER RF connectivity		BJ74CFL	
MATERIAL	CODE IDENT	DRAWING NO.	REV
	14949	3-0203	P
SCALE 4/1		DATE 11/11/88	SHEET 1 OF 2

Mouser Electronics

Authorized Distributor

Click to View Pricing, Inventory, Delivery & Lifecycle Information:

[Cinch Connectivity Solutions:](#)

[BJ74CFL-201](#)