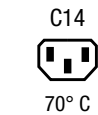


IEC Appliance Inlet C14 with Filter, Fuseholder 1- or 2-pole, Line Switch 2-pole



See below:  
[Approvals and Compliances](#)

**Description**

- Panel mount :  
 Screw-on from front side
- 4 Functions :  
 Appliance Inlet Protection class I , Line Switch 2-pole , Fuseholder for fuse-links 5 x 20 mm 1- or 2-pole , Line filter in standard and medical version
- V-Lock notch standard
- Quick connect terminals 6.3 x 0.8 mm

**Unique Selling Proposition**

- Various mounting options
- Attractive flat design
- Switch for highest inrush current
- V-Lock cord retaining

**Characteristics**

- Ultra-compact design. Ideal for low profile designs  
 Aluminum case provides good shielding
- All single elements are already wired
- Fuse drawer meets requirements of medical standard IEC/EN 60601-1
- Ideal for application with high transient loads
- For applications according IEC/UL 62368-1 we recommend variants with bleed resistor  
 Suitable for use in medical equipment according to IEC/UL 60601-1

**Other versions on request**

- Solder terminals
- Fuse drawer 1-pole, plus spare fuse case
- Fuse drawer 2-pole, with shorting bar
- Other rocker marking
- Line switch, illuminated
- Line switch 1-pole
- Medical Version (M80)
- Class X1- and Y1-capacitors for enhanced withstand voltage

**References**

- Alternative: version without line filter [DD11](#)
- Alternative: version for snap-in mounting [KMF](#)
- Alternative: version with 2-stage filter [DD14](#)

**Weblinks**

[pdf data sheet](#), [html datasheet](#), [General Product Information](#), [Approvals](#), [Distributor-Stock-Check](#), [Accessories](#), [Detailed request for product](#), [Landing Page](#)

**Technical Data**

|                                 |   |                                   |  |
|---------------------------------|---|-----------------------------------|--|
| Ratings IEC                     | 1 - 10A @ Ta 40 °C / 250VAC; 50Hz   | Appliance inlet/-outlet           | C14 acc. to IEC 60320-1  |
| Ratings UL/CSA                  | 1 - 8A @ Ta 40 °C / 250VAC; 60Hz  |                                   | UL 498, CSA C22.2 no. 42 (for cold conditions) pin-temperature 70 °C, 10A, Protection Class I          |
| Leakage Current                 | standard < 0.5mA (250V / 60Hz)<br>medical < 5 µA (250 V / 60 Hz)                      | Fuseholder                        | 1 or 2 pole, Shocksafe category PC2 acc. to IEC 60127-6, for fuse-links 5 x 20mm                       |
| Dielectric Strength             | > 1.7kVDC between L-N<br>> 2.7kVDC between L/N-PE<br>Test voltage (2sec)              | Rated Power Acceptance @ Ta 23 °C | 5 x 20: 2W (1 pole)/ 1.6W (2-pole) per pole  |
| Allowable Operation Temperature | -25°C to 85°C   | Power Acceptance @ Ta > 23°C      | Admissible power acceptance at higher ambient temperature see derating curves                          |
| Climatic Category               | 25/085/21 acc. to IEC 60068-1   | Line Switch                       | Rocker switch 2-pole, non-illuminated, acc. to IEC 61058-1<br><a href="#">Technical Details</a>        |
| IP-Protection                   | from front side IP40 acc. to IEC 60529  | Line Filter                       | Standard and Medical Version, IEC 60939, UL 1283, CSA C22.2 no. 8<br><a href="#">Technical Details</a> |
| Protection Class                | Suitable for appliances with protection class I acc. to IEC 61140                     | MTBF                              | > 2'000'000h acc. to MIL-HB-217 F  |
| Terminal                        | Quick connect terminals 6.3 x 0.8 mm  |                                   |  |
| Panel Thickness S               | Screw-on mounting: max 8mm<br>Mounting screw torque max 0.5Nm<br>Snap-in: 1 mm to 3mm |                                   |  |
| Material: Housing               | Thermoplastic, black, UL 94V-0  |                                   |  |

**Approvals and Compliances**

Detailed information on product approvals, code requirements, usage instructions and detailed test conditions can be looked up in [Details about Approvals](#)

SCHURTER products are designed for use in industrial environments. They have approvals from independent testing bodies according to national and international standards. Products with specific characteristics and requirements such as required in the automotive sector according to IATF 16949, medical technology according to ISO 13485 or in the aerospace industry can be offered exclusively with customer-specific, individual agreements by SCHURTER.

## Approvals









The approval mark is used by the testing authorities to certify compliance with the safety requirements placed on electronic products.

Approval Reference Type: DD12

| Approval Logo  | Certificates                  | Certification Body | Description                  |
|--|-------------------------------|--------------------|------------------------------|
|  | <a href="#">VDE Approvals</a> | VDE                | Certificate Number: 40001522 |
|  | <a href="#">UL Approvals</a>  | UL                 | UL File Number: E72928       |




## Product standards

Product standards that are referenced

| Organization   | Design                | Standard         | Description   |
|--|-----------------------|------------------|---|
|    | Designed according to | IEC 60320-1      | Appliance couplers for household and similar general purposes         |
|    | Designed according to | IEC 60939        | Passive filters for suppressing electromagnetic interference          |
|    | Designed according to | IEC 60127-6      | Miniature fuses. Part 6. Fuse-holders for miniature fuse-links        |
|   | Designed according to | IEC 61058-1      | Switches for appliances. Part 1. General requirements                 |
|  | Designed according to | UL 498           | Standard for Attachment Plugs and Receptacles                         |
|  | Designed according to | UL 1283          | Electromagnetic interference filters                                  |
|  | Designed according to | CSA C22.2 no. 42 | General Use Receptacles, Attachment Plugs, and Similar Wiring Devices |
|  | Designed according to | CSA C22.2 no. 8  | Electromagnetic interference (EMI) filters                            |








## Application standards

Application standards where the product can be used

| Organization   | Design                         | Standard       | Description  |
|--|--------------------------------|----------------|--|
|  | Designed for applications acc. | IEC/UL 62368-1 | IEC 62368-1 includes the basic requirements for safety of audio, video, information technology and office equipment.   |
|  | Designed for applications acc. | IEC 60601-1    | Medical electrical equipment - Part 1: General requirements for basic safety and essential performance   |
|  | Designed for applications acc. | IEC 60335-1    | Safety of electrical appliances for household and similar purposes. Meets the requirements for appliances in unattended use. This includes the enhanced requirements of glow wire tests acc. to IEC 60695-2-11 or -12 & -13. |

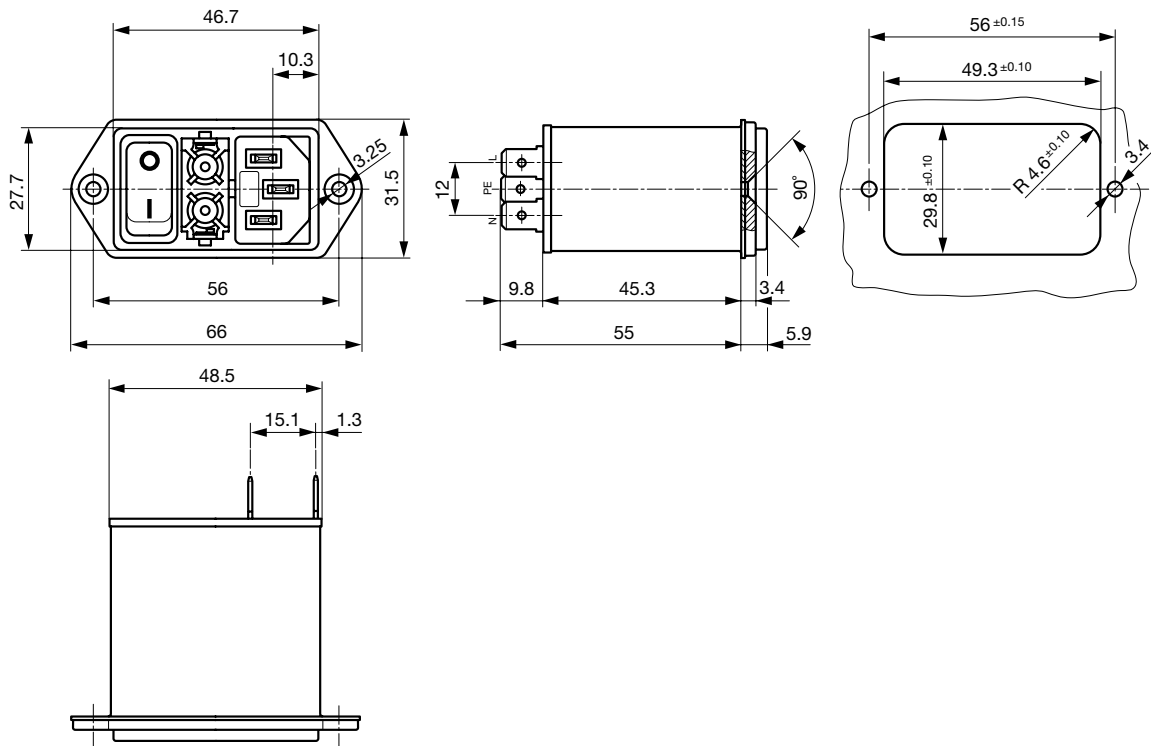
### Compliances

The product complies with following Guide Lines

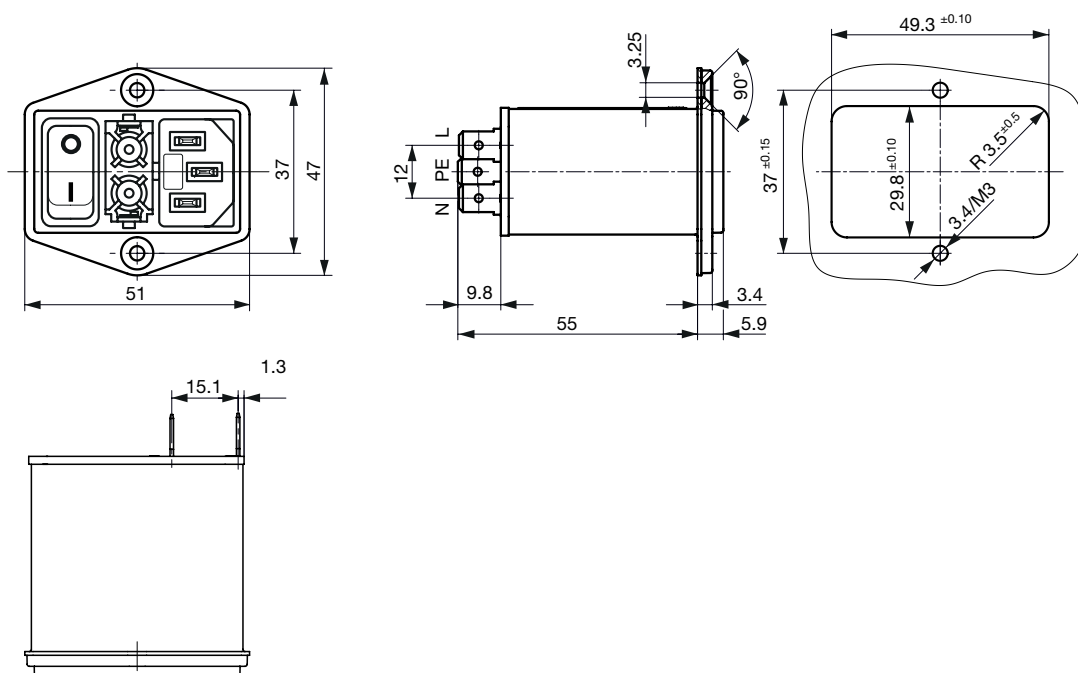
| Identification  | Details                                      | Initiator   | Description  |
|---|--|-------------|--|
|  | <a href="#">CE declaration of conformity</a> | SCHURTER AG | The CE marking declares that the product complies with the applicable requirements laid down in the harmonisation of Community legislation on its affixing in accordance with EU Regulation 765/2008.                        |
|  | RoHS   | SCHURTER AG | Directive RoHS 2011/65/EU, Amendment (EU) 2015/863   |
|  | China RoHS                                   | SCHURTER AG | The law SJ / T 11363-2006 (China RoHS) has been in force since 1 March 2007. It is similar to the EU directive RoHS.   |
|  | REACH  | SCHURTER AG | On 1 June 2007, Regulation (EC) No 1907/2006 on the Registration, Evaluation, Authorization and Restriction of Chemicals 1 (abbreviated as "REACH") entered into force.  |
|  | <a href="#">Landing Page V-Lock</a>          | SCHURTER AG | V-Lock system are based on a matching plug-dose combination. The connector is equipped with a notch intended for use with the latching cordset. The cord latching system prevents against accidental removal of the cordset. |
|  | <a href="#">White Paper Glow wire test</a>   | SCHURTER AG | Meets the requirements of IEC 60335-1 for appliances in unattended use. This includes the enhanced requirements of glow wire tests acc. to IEC 60695-2-11 or -12 & -13.  |
|  | <a href="#">Medical Technology</a>           | SCHURTER AG | Suitable for use in medical equipment according to IEC/UL 60601-1  |

### Dimension [mm]

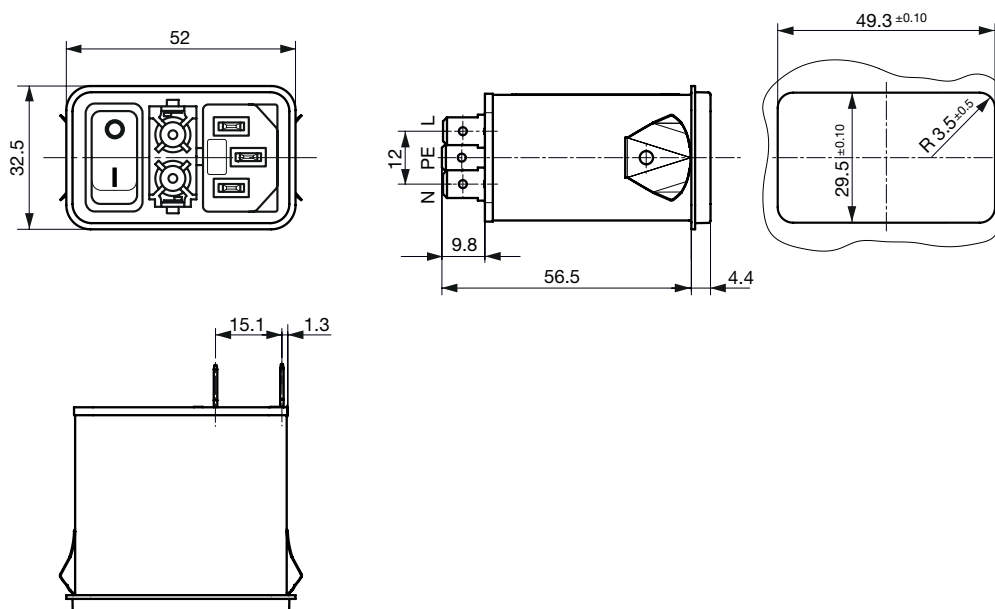
Screw version A



Screw version B



Snap-in mounting from front side

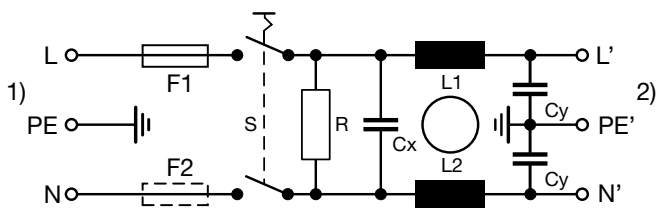


**Technical Data of Filter-Components**

| Rated Current [A] | Filter-Type                             | Inductance L1/<br>L2 [mH] | Inductance L3<br>[mH] | Capacitance CX<br>[nF] | Capacitance CY<br>[nF] | R [MΩ] |
|-------------------|---|---------------------------|-----------------------|------------------------|------------------------|--------|
| 1                 | Standard version                        | 2 x 10                    | -                     | 100                    | 2.2                    | 1      |
| 2                 | Standard version                        | 2 x 4                     | -                     | 100                    | 2.2                    | 1      |
| 4                 | Standard version                        | 2 x 1.5                   | -                     | 100                    | 2.2                    | 1      |
| 6                 | Standard version                        | 2 x 0.8                   | -                     | 100                    | 2.2                    | 1      |
| 8                 | Standard version                        | 2 x 0.6                   | -                     | 100                    | 2.2                    | 1      |
| 10                | Standard version                        | 2 x 0.3                   | -                     | 100                    | 2.2                    | 1      |
| 6                 | Standard Version with Ground Line Choke | 2 x 0.8                   | -                     | 100                    | 2.2                    | 1      |
| 10                | Standard Version with Ground Line Choke | 2 x 0.3                   | -                     | 100                    | 2.2                    | 1      |
| 1                 | Medical Version (M5)                    | 2 x 10                    | -                     | 100                    | -                      | 1      |
| 2                 | Medical Version (M5)                    | 2 x 4                     | -                     | 100                    | -                      | 1      |
| 4                 | Medical Version (M5)                    | 2 x 1.5                   | -                     | 100                    | -                      | 1      |
| 6                 | Medical Version (M5)                    | 2 x 0.8                   | -                     | 100                    | -                      | 1      |
| 8                 | Medical Version (M5)                    | 2 x 0.6                   | -                     | 100                    | -                      | 1      |
| 10                | Medical Version (M5)                    | 2 x 0.3                   | -                     | 100                    | -                      | 1      |
| 1                 | Medical Version (M80)                   | 2 x 10                    | -                     | 100                    | 0.47                   | 1      |

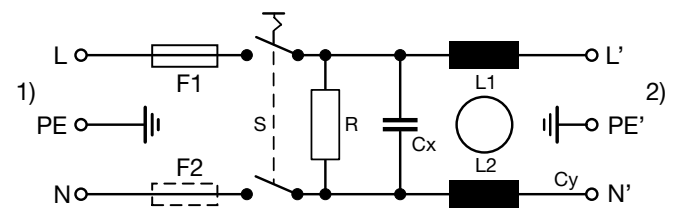
**Diagrams**

Standard Version, medical Version M80  
 non-illuminated



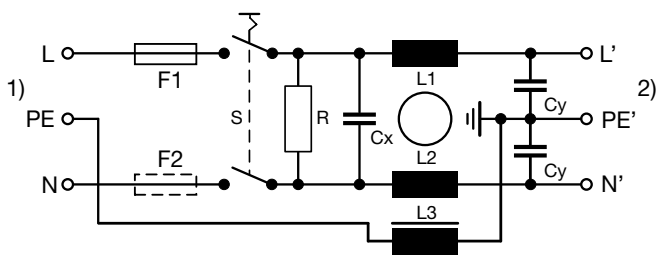
1) Line  
 2) Load

Medical Version (M5)  
 non-illuminated



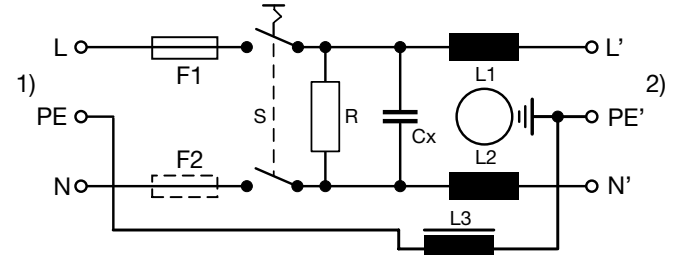
1) Line  
 2) Load

Standard Version, medical Version M80  
 with PE-choke



1) Line  
 2) Load

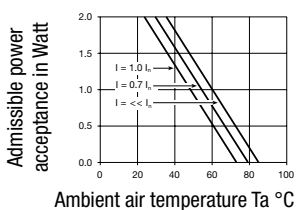
Medical Version (M5)  
 with PE-choke



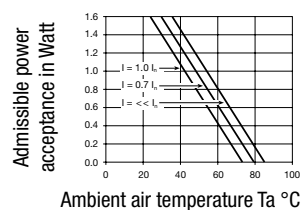
1) Line  
 2) Load

**Derating Curves**

1-pole



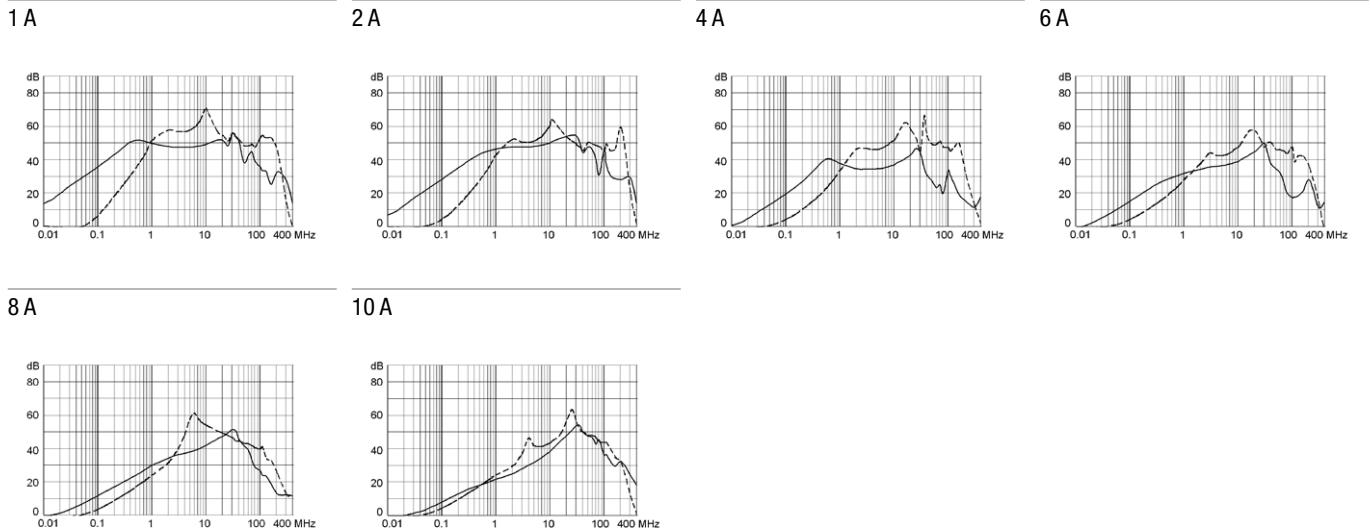
2-pole



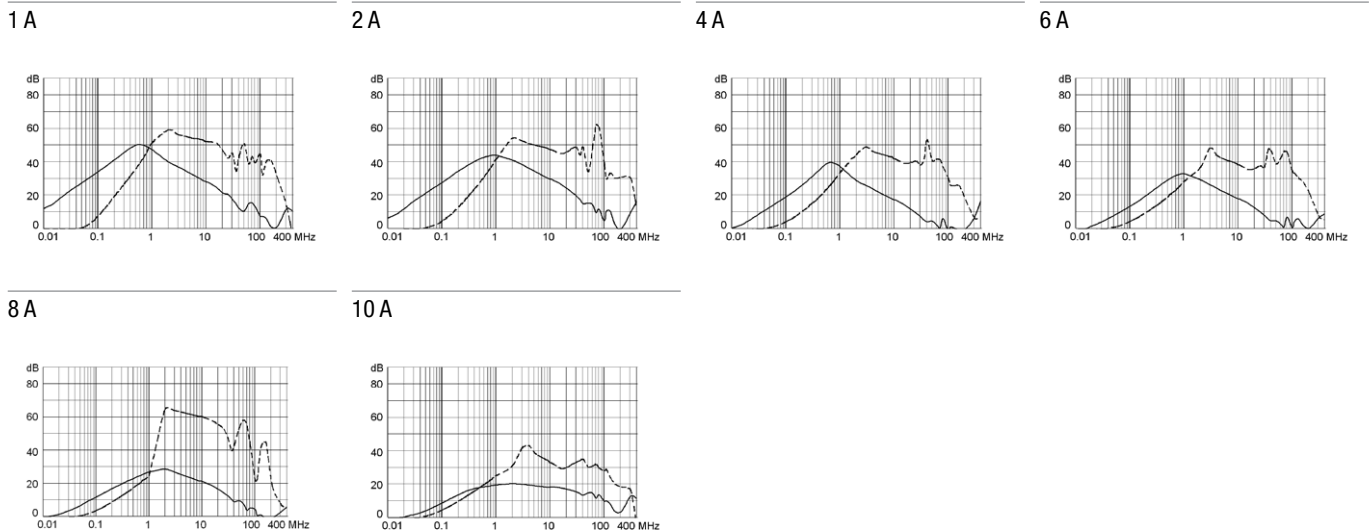
## Attenuation Loss

--- 50Ω differential mode    \_\_\_\_ 50Ω common mode

Standard version



Medical version (M5)



## All Variants

| Rated Current [A] | Filter-Type      | Mounting   | Fuseholder | Line Switch | Illumination       | Color | Order Number                  |
|-------------------|------------------|------------|------------|-------------|--------------------|-------|-------------------------------|
| 1                 | Standard version | Screw-on A | 1-pole     | 2-pole      | non-illuminated    | black | <a href="#">DD12.1111.111</a> |
| 1                 | Standard version | Snap-in    | 2-pole     | 2-pole      | non-illuminated    | black | <a href="#">3-107-465</a>     |
| 1                 | Standard version | Screw-on B | 2-pole     | 2-pole      | non-illuminated    | black | <a href="#">3-109-955</a>     |
| 1                 | Standard version | Screw-on A | 2-pole     | 2-pole      | non-illuminated    | black | <a href="#">DD12.1121.111</a> |
| 2                 | Standard version | Screw-on A | 1-pole     | 2-pole      | non-illuminated    | black | <a href="#">DD12.2111.111</a> |
| 2                 | Standard version | Snap-in    | 2-pole     | 2-pole      | non-illuminated    | black | <a href="#">3-107-466</a>     |
| 2                 | Standard version | Screw-on B | 2-pole     | 2-pole      | non-illuminated    | black | <a href="#">3-109-956</a>     |
| 2                 | Standard version | Screw-on A | 2-pole     | 2-pole      | non-illuminated    | black | <a href="#">DD12.2121.111</a> |
| 2                 | Standard version | Screw-on A | 2-pole     | 2-pole      | illuminated, red   | black | <a href="#">DD12.2123.111</a> |
| 2                 | Standard version | Screw-on A | 2-pole     | 2-pole      | illuminated, green | black | <a href="#">DD12.2124.111</a> |
| 4                 | Standard version | Screw-on B | 1-pole     | 2-pole      | non-illuminated    | black | <a href="#">3-110-001</a>     |
| 4                 | Standard version | Snap-in    | 1-pole     | 2-pole      | non-illuminated    | black | <a href="#">3-110-032</a>     |
| 4                 | Standard version | Screw-on A | 1-pole     | 2-pole      | non-illuminated    | black | <a href="#">DD12.4111.111</a> |
| 4                 | Standard version | Snap-in    | 2-pole     | 2-pole      | non-illuminated    | black | <a href="#">3-107-467</a>     |

| Rated Current [A] | Filter-Type                             | Mounting   | Fuseholder | Line Switch | Illumination    | Color | Order Number  |
|-------------------|---|------------|------------|-------------|-----------------|-------|---------------|
| 4                 | Standard version                        | Screw-on B | 2-pole     | 2-pole      | non-illuminated | black | 3-109-957     |
| 4                 | Standard version                        | Screw-on A | 2-pole     | 2-pole      | non-illuminated | black | DD12.4121.111 |
| 6                 | Standard version                        | Snap-in    | 1-pole     | 2-pole      | non-illuminated | black | 3-110-010     |
| 6                 | Standard version                        | Screw-on B | 1-pole     | 2-pole      | non-illuminated | black | 3-110-031     |
| 6                 | Standard version                        | Screw-on A | 1-pole     | 2-pole      | non-illuminated | black | DD12.6111.111 |
| 6                 | Standard version                        | Screw-on B | 2-pole     | 2-pole      | non-illuminated | black | 3-102-857     |
| 6                 | Standard version                        | Snap-in    | 2-pole     | 2-pole      | non-illuminated | black | 3-102-861     |
| 6                 | Standard version                        | Screw-on A | 2-pole     | 2-pole      | non-illuminated | black | DD12.6121.111 |
| 6                 | Standard version                        | Screw-on A | 2-pole     | 2-pole      | illuminated red | black | DD12.6123.111 |
| 8                 | Standard version                        | Screw-on A | 1-pole     | 2-pole      | non-illuminated | black | DD12.8111.111 |
| 8                 | Standard version                        | Snap-in    | 2-pole     | 2-pole      | non-illuminated | black | 3-107-468     |
| 8                 | Standard version                        | Screw-on B | 2-pole     | 2-pole      | non-illuminated | black | 3-109-958     |
| 8                 | Standard version                        | Screw-on A | 2-pole     | 2-pole      | non-illuminated | black | DD12.8121.111 |
| 10                | Standard version                        | Screw-on A | 1-pole     | 2-pole      | non-illuminated | black | DD12.9111.111 |
| 10                | Standard version                        | Screw-on B | 2-pole     | 2-pole      | non-illuminated | black | 3-105-315     |
| 10                | Standard version                        | Snap-in    | 2-pole     | 2-pole      | non-illuminated | black | 3-107-469     |
| 10                | Standard version                        | Screw-on A | 2-pole     | 2-pole      | non-illuminated | black | DD12.9121.111 |
| 6                 | Standard Version with Ground Line Choke | Screw-on B | 2-pole     | 2-pole      | non-illuminated | black | 3-109-943     |
| 10                | Standard Version with Ground Line Choke | Screw-on A | 2-pole     | 2-pole      | non-illuminated | black | 3-102-855     |
| 1                 | Medical Version (M5)                    | Snap-in    | 2-pole     | 2-pole      | non-illuminated | black | 3-107-472     |
| 1                 | Medical Version (M5)                    | Screw-on B | 2-pole     | 2-pole      | non-illuminated | black | 3-109-994     |
| 1                 | Medical Version (M5)                    | Screw-on A | 2-pole     | 2-pole      | non-illuminated | black | DD12.1321.111 |
| 2                 | Medical Version (M5)                    | Snap-in    | 2-pole     | 2-pole      | non-illuminated | black | 3-107-473     |
| 2                 | Medical Version (M5)                    | Screw-on B | 2-pole     | 2-pole      | non-illuminated | black | 3-109-995     |
| 2                 | Medical Version (M5)                    | Screw-on A | 2-pole     | 2-pole      | non-illuminated | black | DD12.2321.111 |
| 4                 | Medical Version (M5)                    | Snap-in    | 2-pole     | 2-pole      | non-illuminated | black | 3-107-474     |
| 4                 | Medical Version (M5)                    | Screw-on B | 2-pole     | 2-pole      | non-illuminated | black | 3-109-997     |
| 4                 | Medical Version (M5)                    | Screw-on A | 2-pole     | 2-pole      | non-illuminated | black | DD12.4321.111 |
| 6                 | Medical Version (M5)                    | Snap-in    | 2-pole     | 2-pole      | non-illuminated | black | 3-107-475     |
| 6                 | Medical Version (M5)                    | Screw-on B | 2-pole     | 2-pole      | non-illuminated | black | 3-109-998     |
| 6                 | Medical Version (M5)                    | Screw-on A | 2-pole     | 2-pole      | non-illuminated | black | DD12.6321.111 |
| 8                 | Medical Version (M5)                    | Snap-in    | 2-pole     | 2-pole      | non-illuminated | black | 3-107-476     |
| 8                 | Medical Version (M5)                    | Screw-on B | 2-pole     | 2-pole      | non-illuminated | black | 3-109-999     |
| 8                 | Medical Version (M5)                    | Screw-on A | 2-pole     | 2-pole      | non-illuminated | black | DD12.8321.111 |
| 10                | Medical Version (M5)                    | Snap-in    | 2-pole     | 2-pole      | non-illuminated | black | 3-107-477     |
| 10                | Medical Version (M5)                    | Screw-on B | 2-pole     | 2-pole      | non-illuminated | black | 3-110-000     |
| 10                | Medical Version (M5)                    | Screw-on A | 2-pole     | 2-pole      | non-illuminated | black | DD12.9321.111 |
| 1                 | Medical Version (M80)                   | Screw-on A | 2-pole     | 2-pole      | non-illuminated | black | DD12.1621.111 |

Most Popular.

Availability for all products can be searched real-time: <https://www.schurter.com/en/Stock-Check/Stock-Check-SCHURTER>

10 A version only IEC approval.

**Packaging unit** 10 Pcs

Required Accessory



Description

Fusedrawer 2

Fusedrawer für Fuse Links 5x20 mm, with or without Voltage Selector Insert

|                    |           |
|--------------------|-----------|
| Fingergrip, 2-pole | 4301.1401 |
| Extra-Safe, 2-pole | 4301.1403 |
| Fingergrip, 1-pole | 4301.1405 |
| Extra-Safe, 1-pole | 4301.1407 |
| ...                | ...       |

Accessories



Wire Harness

Wire harness for SCHURTER products



Assorted Covers

Rear Cover

|  |           |
|--|-----------|
|  | 0859.0076 |
|--|-----------|



Cord retaining kits

Cord retaining strain relief

|              |           |
|--------------|-----------|
| Flat head, A | 4700.0001 |
|--------------|-----------|

Mating Outlets/Connectors

Category / Description

Appliance Outlet Overview complete



|   |      |
|---|------|
| 4787, Mounting: Screw-on mounting, Appliance Outlet: IEC Solder terminals, 10 A, Suitable for appliances with protection class I                          | 4787 |
| 4788, Mounting: Snap-in version, Appliance Outlet: IEC Solder terminals or quick connect terminals, 10 A, Suitable for appliances with protection class I | 4788 |
| IEC Appliance Outlet F or H, Screw-on Mounting, Front Side, Solder, PCB or Quick-connect Terminal   | 5091 |

Appliance Outlet further types to DD12

Connector Overview complete



|   |         |
|---|---------|
| 4782 Mounting: Power Cord, 3 x 1 mm <sup>2</sup> / 3 x 18 AWG, Cable, Connector: IEC C13    | 4782    |
| 4785 Mounting: Power Cord, 3 x 1 mm <sup>2</sup> / 3 x 18 AWG, Cable, Connector: IEC C13    | 4785    |
| 4012 Mounting: Power Supply Cord, 3 x 1 mm <sup>2</sup> , Screw clamps, Connector: IEC C13  | 4012    |
| 4300-06 Mounting: Power Cord, 3 x 1 mm <sup>2</sup> / 3 x 18 AWG, Cable, Connector: IEC C13 | 4300-06 |
| 4781 Mounting: Power Cord, 3 x 1 mm <sup>2</sup> / 3 x 18 AWG, Cable, Connector: IEC C15    | 4781    |

Connector further types to DD12



### Mating Outlets/Connectors shuttered



[Connector Overview complete](#)

4783 Mounting: Power Cord, 3 x 1 mm<sup>2</sup> / 3 x 18 AWG, Cable, Connector: IEC C13

[4783](#)

[Connector further types to DD12](#)



[Power Cord Overview complete](#)

VAC13KS, Overview, V-Lock cord retaining, diverse Connector IEC C13, diverse, black

[VAC13KS](#)

[Power Cord further types to DD12](#)

# Mouser Electronics

Authorized Distributor

Click to View Pricing, Inventory, Delivery & Lifecycle Information:

## Schurter:

[DD12.1111.111](#) [DD12.1121.111](#) [DD12.1321.111](#) [DD12.2111.111](#) [DD12.2121.111](#) [DD12.2321.111](#) [DD12.4111.111](#)  
[DD12.4121.111](#) [DD12.4321.111](#) [DD12.6111.111](#) [DD12.6121.111](#) [DD12.6321.111](#) [DD12.9111.111](#) [DD12.9121.111](#)  
[DD12.9321.111](#) [DD12.6123.111](#) [DD12.8121.111](#) [DD12.8111.111](#) [DD12.8321.111](#) [DD12.6324.111](#) [DD12.2324.111](#)  
[DD12.4324.111](#) [DD12.2124.111](#)