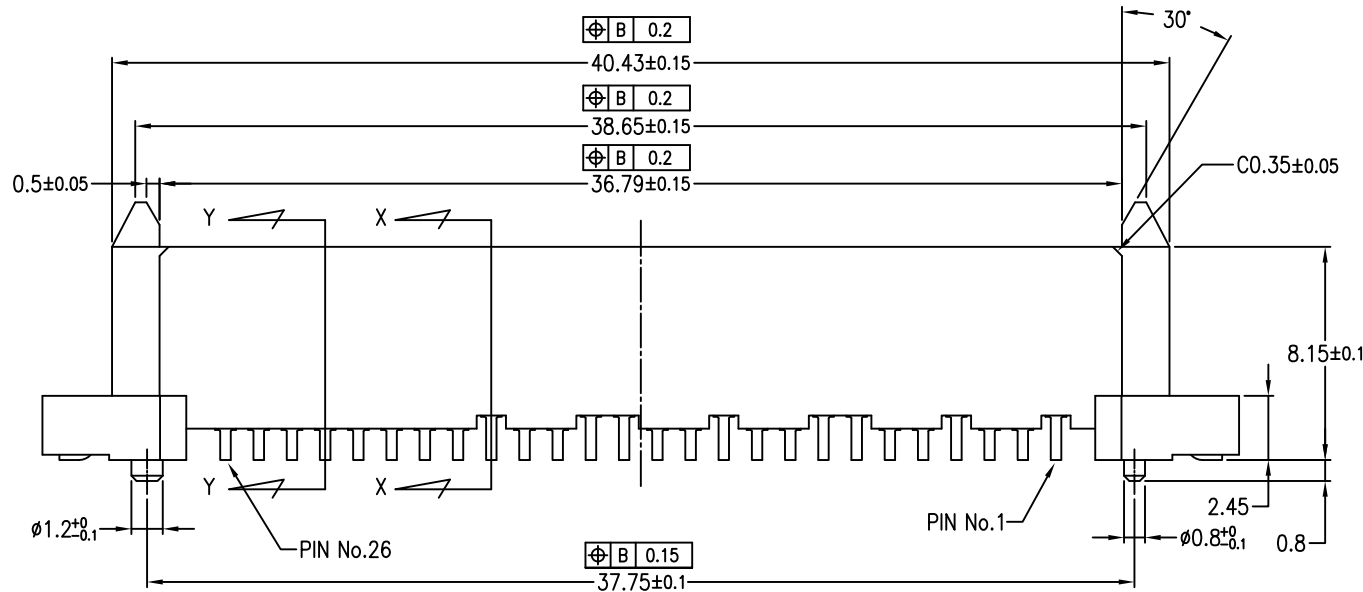
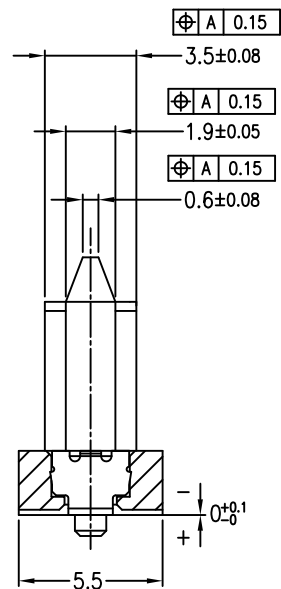
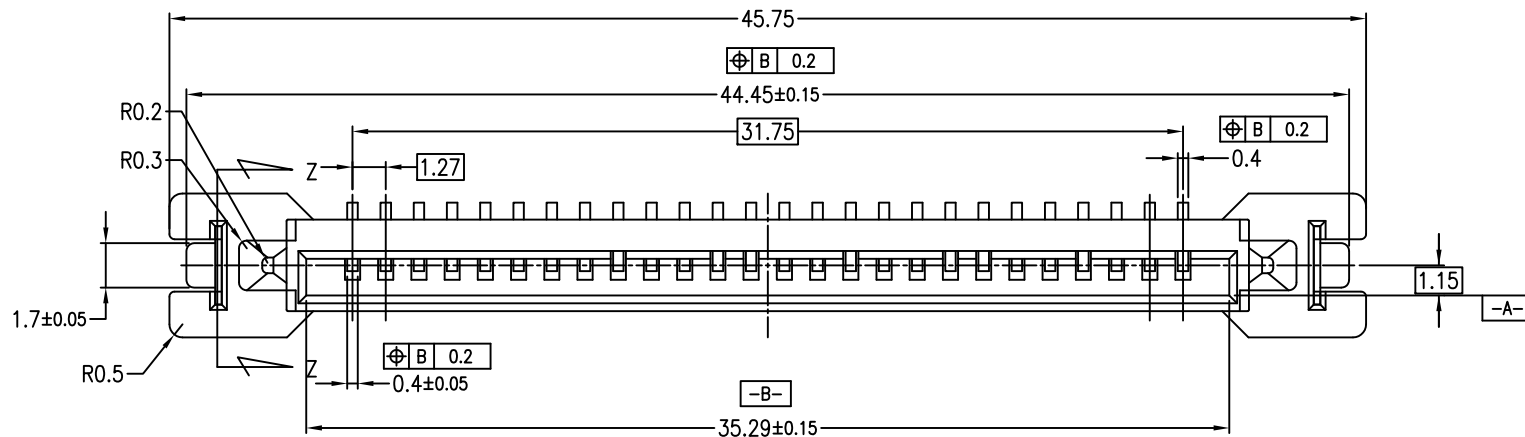
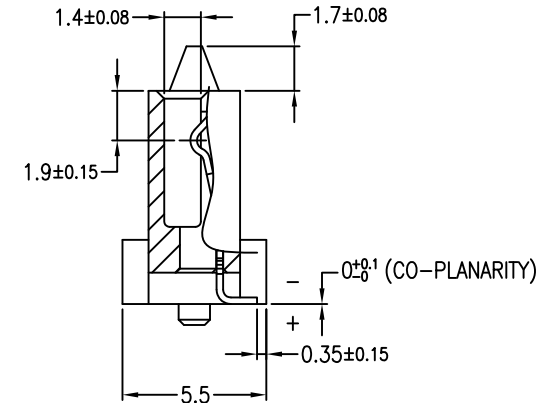
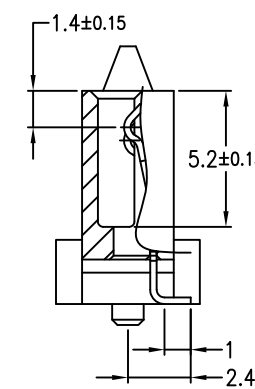


PRODUCT NO.
10034273-001LF



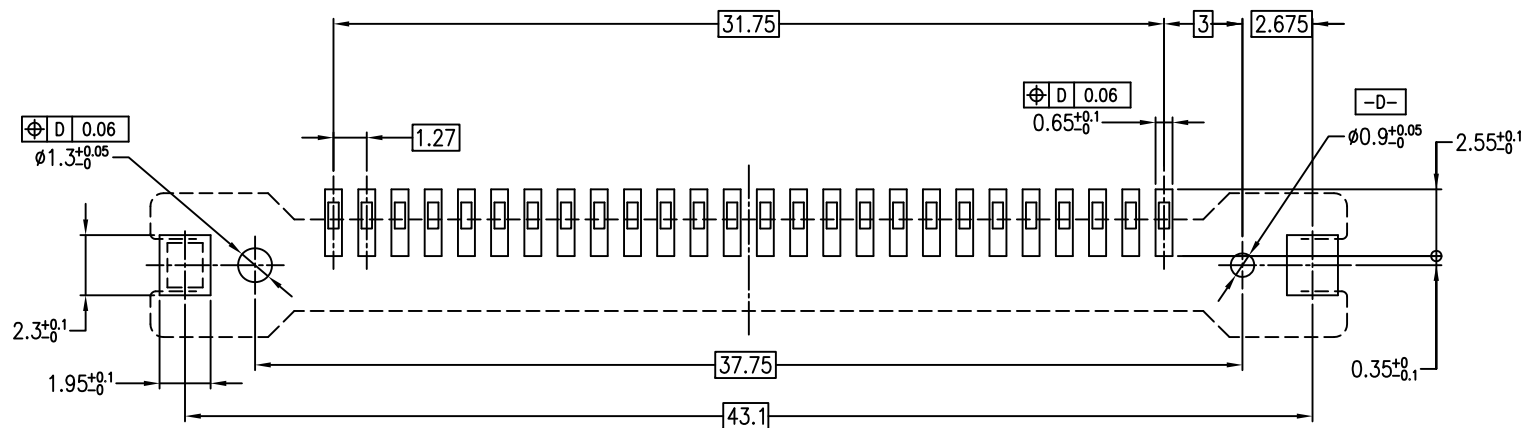
PIN NO.1,4,7,8,
11,14,15,18 ONLY



SECT.Z-Z

SECT.X-X

SECT.Y-Y



RECOMMENDED MOUNTING LAYOUT
TOLERANCE UNLESS OTHERWISE:±0.1

NOTE

1.MATERIAL

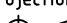
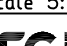
- 1) HOUSING : HIGH TEMPERATURE THERMOPLASTIC,BLACK, UL94V-0
- 2) TERMINAL : COPPER ALLOY

2.FINISH

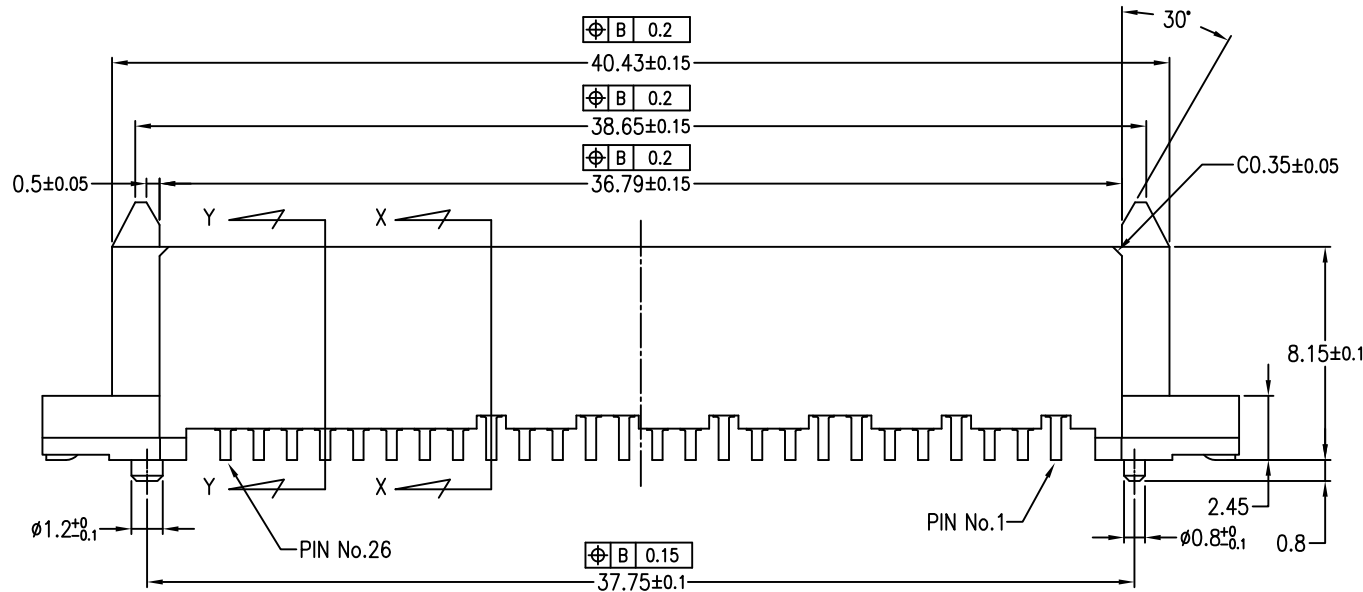
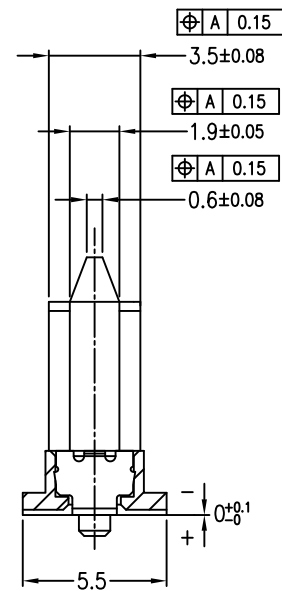
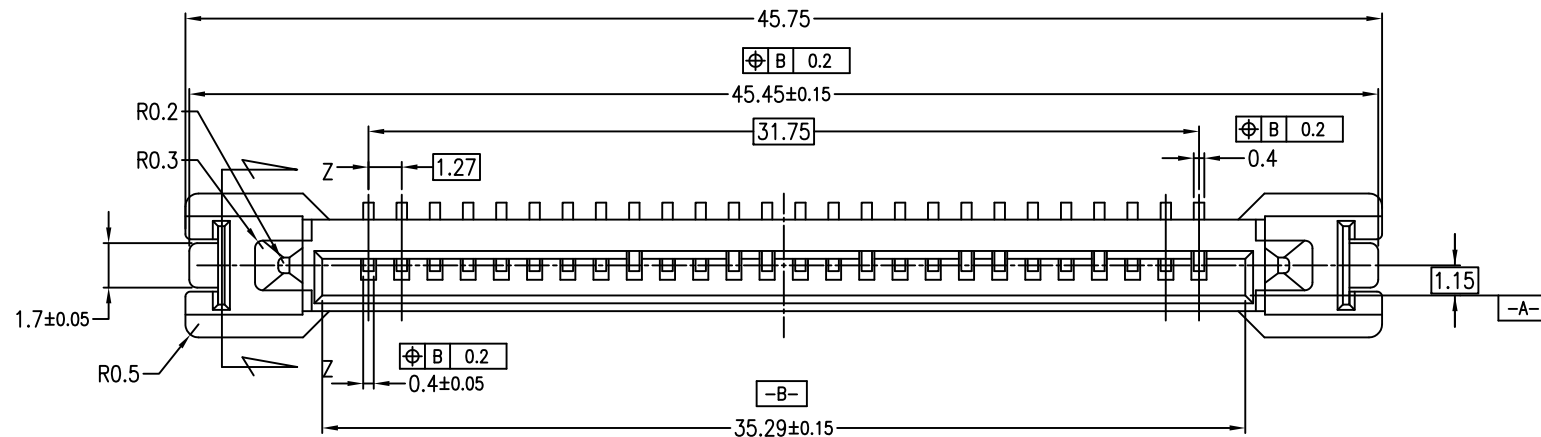
- 1) TERMINAL : ALL OVER Ni 1.27μm MIN.
CONTACT POINT Au PLATING 0.3μm MIN.
SOLDER TAIL SEE TABLE

3.RoHS

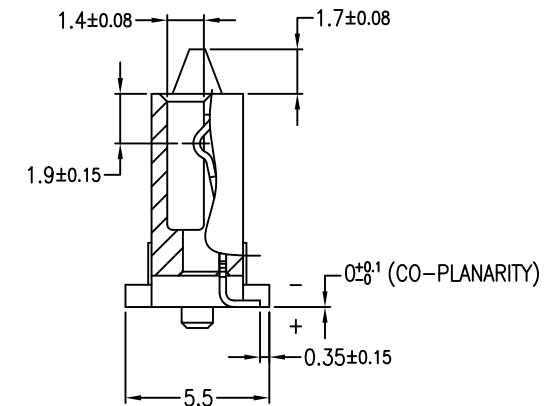
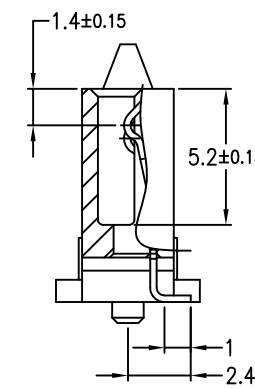
THIS PRODUCT MEETS EUROPEAN UNION DIRECTIVES AND OTHER
COUNTRY REGULATIONSAS DESCRIBED IN GS-22-008

mat'l. code ----				surface ISO 1302 ✓		tolerance ISO 406 ISO 1101		projection 		product family 55SF Removable HDD				CODE JP			
ltr		description		ecn no		dr		date		tolerances unless otherwise specified		title		<div>ASSEMBLY S-iVDR COMB RECE. SMT VERT TYPE</div>			
A		RELEASED		J05-0383		Y.K		6/23/'05		angles		0.X ±0.3				<div>MM ↔</div> <div>scale 5:1</div>	
B		Change of P/N		J07-0464		Y.K		2007-9-13		linear		0.XX ±0.3					
C		REVISED		J10-0361		Y.K		2010-12-17		0'±2"		0.XXX ±0.3					
D		REVISED		ELX-J-012831		Y.K		2012-09-13		dr		Y.KAMEDA 6/23/'05					
										enrg		Y.KAMEDA 6/23/'05		<div>FCI </div>			
										chr		Y.KAMEDA 2012-09-13					
										appd		Y.KAMEDA 2012-09-13					
sheet index		revision sheet		D 1		D 2								Rev. D			

PRODUCT NO.
10034273-002LF



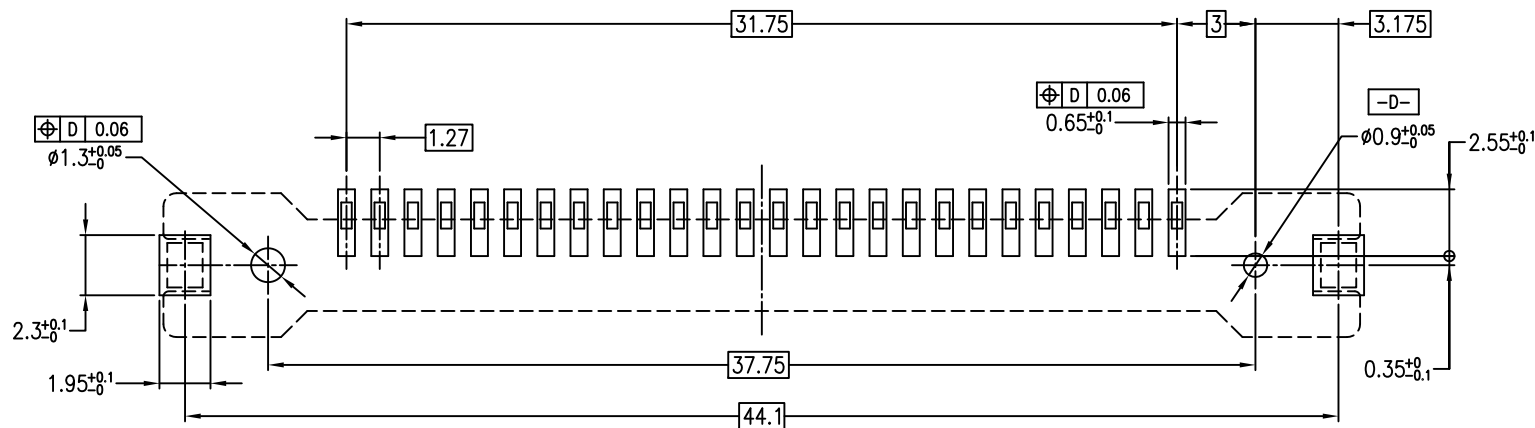
PIN NO.1,4,7,8,
11,14,15,18 ONLY



SECT.Z-Z

SECT.X-X

SECT.Y-Y



RECOMMENDED MOUNTING LAYOUT
TOLERANCE UNLESS OTHERWISE:±0.1

NOTE

- THIS PRODUCT MEETS THE iVDR-HWSPEC (2.5-inch, 1.8-inch Serial type)
- MATERIAL
 - HOUSING : HIGH TEMPERATURE THERMOPLASTIC,BLACK, UL94V-0
 - TERMINAL : COPPER ALLOY
- FINISH
 - TERMINAL : ALL OVER Ni 1.27μm MIN.
CONTACT POINT Au PLATING 0.3μm MIN.
SOLDER TAIL SEE TABLE
- RoHS
THIS PRODUCT MEETS EUROPEAN UNION DIRECTIVES AND OTHER
COUNTRY REGULATIONSAS DESCRIBED IN GS-22-008

mat'l. code ----					surface ISO 1302 ✓		tolerance ISO 406 ISO 1101			product family 55SF Removable HDD		CODE JP	
ltr	description	ecn no	dr	date	tolerances unless otherwise specified		0.X ±0.3				title ASSEMBLY S-iVDR COMB RECE. SMT VERT TYPE		
C	RELEASED	J10-0361	Y.K	2010-12-17	angles	linear	0.XX ±0.3						
D	REVISED	ELX-J-012831	Y.K	2012-09-13			0°±2°		0.XXX ±0.3				
							scale 5:1						
					dr	Y.KAMEDA	2010-12-17			dwg no		sheet 2 of 2	size
					engr	Y.KAMEDA	2010-12-17			10034273			A2
					chr	H.SUZUKI	2012-09-13						
					appd	M.KAJIURA	2012-09-13						
sheet index	revision sheet												Rev. D

Mouser Electronics

Authorized Distributor

Click to View Pricing, Inventory, Delivery & Lifecycle Information:

[FCI / Amphenol:](#)

[10034273-001LF](#) [10034273-002LF](#)