

4

3

2

1

THIS DRAWING IS UNPUBLISHED.

RELEASED FOR PUBLICATION

ALL RIGHTS RESERVED.

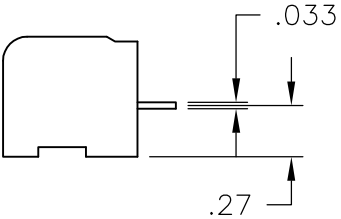
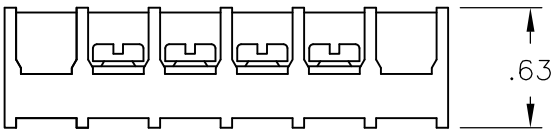
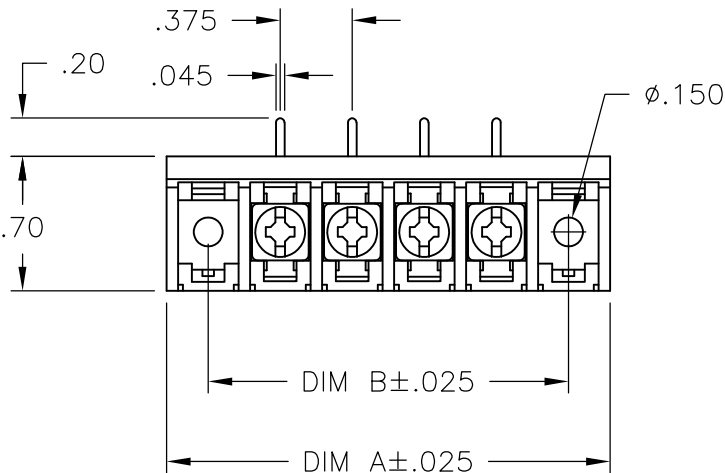
© COPYRIGHT - BY TYCO ELECTRONICS CORPORATION.

| LOC | DIST | REVISIONS | | | | |
|-----|------|---------------------------|--|---------|-----|------|
| P | LTR | DESCRIPTION | | DATE | DWN | APVD |
| | | REVISED PER ECO-10-012476 | | 17JUN10 | HMR | CR |


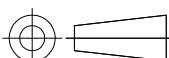
MATERIAL:
HOUSING: THERMOPLASTIC, UL94V-0, BLACK.
TERMINALS: COPPER ALLOY, BRIGHT TIN PLATED.
SCREWS: 6-32, STEEL, ZINC PLATED WITH CLEAR CHROMATE.

ELECTRICAL:
MAXIMUM CURRENT: 25A
OPERATING VOLTAGE: 300V
WIRE RANGE: 12-22 AWG
RECOMMENDED TIGHTENING TORQUE: 7 IN-LB

ENVIRONMENT:
OPERATING TEMP.: +105°C MAX



| | | | | |
|---------|---------|-----------|----------------|-------------|
| 10.875 | 11.311 | 28 | 6PCR-28-008 | 5-1546399-2 |
| 10.500 | 10.936 | 27 | 6PCR-27-008 | 5-1546399-1 |
| 10.125 | 10.561 | 26 | 6PCR-26-008 | 5-1546399-0 |
| 9.750 | 10.186 | 25 | 6PCR-25-008 | 4-1546399-9 |
| 9.375 | 9.811 | 24 | 6PCR-24-008 | 4-1546399-8 |
| 9.000 | 9.436 | 23 | 6PCR-23-008 | 4-1546399-7 |
| 8.625 | 9.061 | 22 | 6PCR-22-008 | 4-1546399-6 |
| 8.250 | 8.686 | 21 | 6PCR-21-008 | 4-1546399-5 |
| 7.875 | 8.311 | 20 | 6PCR-20-008 | 4-1546399-4 |
| 7.500 | 7.936 | 19 | 6PCR-19-008 | 4-1546399-3 |
| 7.125 | 7.561 | 18 | 6PCR-18-008 | 4-1546399-2 |
| 6.750 | 7.186 | 17 | 6PCR-17-008 | 4-1546399-1 |
| 6.375 | 6.811 | 16 | 6PCR-16-008 | 4-1546399-0 |
| 6.000 | 6.436 | 15 | 6PCR-15-008 | 3-1546399-9 |
| 5.625 | 6.061 | 14 | 6PCR-14-008 | 3-1546399-8 |
| 5.250 | 5.686 | 13 | 6PCR-13-008 | 3-1546399-7 |
| 4.875 | 5.311 | 12 | 6PCR-12-008 | 3-1546399-6 |
| 4.500 | 4.936 | 11 | 6PCR-11-008 | 3-1546399-5 |
| 4.125 | 4.561 | 10 | 6PCR-10-008 | 3-1546158-8 |
| 3.750 | 4.186 | 9 | 6PCR-09-008 | 3-1546399-4 |
| 3.375 | 3.811 | 8 | 6PCR-08-008 | 1437652-1 |
| 3.000 | 3.436 | 7 | 6PCR-07-008 | 3-1546399-3 |
| 2.625 | 3.061 | 6 | 6PCR-06-008 | 3-1546158-2 |
| 2.250 | 2.686 | 5 | 6PCR-05-008 | 3-1546158-1 |
| 1.875 | 2.311 | 4 | 6PCR-04-008 | 3-1546158-0 |
| 1.500 | 1.936 | 3 | 6PCR-03-008 | 2-1546158-8 |
| 1.125 | 1.561 | 2 | 6PCR-02-008 | 2-1546158-7 |
| DIM "B" | DIM "A" | NO OF POS | CATALOG NUMBER | TE NUMBER |

| | | | | | | | |
|---------------------------------------------------------------------------------------|------------------------------------------------------------------------------------------------------------------------------------------------------------------------------------------------|-------------------------------|------------------------------------------------------------------------------------------------------------------------------------------------------------------------|--------------------|---------------------------|------------------------|----------|
| THIS DRAWING IS A CONTROLLED DOCUMENT. | | DWN S SCHLEGEL 10/19/06 |  Tyco Electronics Tyco Electronics Corporation Harrisburg, PA 17105-3608 | | | | |
| DIMENSIONS: INCHES | | CHK S YODER 10/19/06 | | | | | |
|  | TOLERANCES UNLESS OTHERWISE SPECIFIED: 0 PLC ± - 1 PLC ± - 2 PLC ± .01 3 PLC ± .005 4 PLC ± - ANGLES ± 1° | APVD S YODER 10/19/06 | NAME 6PCR-XX-008 ASSEMBLY | | | | |
| | | PRODUCT SPEC — | | | | | |
| | | APPLICATION SPEC — | | | | | |
| | | WEIGHT — | | | | | |
| MATERIAL — | FINISH — | SIZE A3 | | CAGE CODE 00779 | DRAWING NO C-1437652-1 | RESTRICTED TO — | |
| CUSTOMER DRAWING | | | | | SCALE NTS | SHEET 1 OF 1 | REV B |

Mouser Electronics

Authorized Distributor

Click to View Pricing, Inventory, Delivery & Lifecycle Information:

[TE Connectivity:](#)

[6PCR-10-008](#)