

CONSTRUCTION

GASKET SEALED & VENTED

MAIN CONTACTS

COIL DATA

AUX. CONTACTS

ENVIRONMENTAL DATA

SHOCK

ACCELERATION

ALTITUDE

ENVIRONMENTAL DATA

AUXILIARY TEMP

VIBRATION

SHOCK

ACCELERATION

ALTITUDE

ENVIRONMENTAL DATA

AUXILIARY TEMP

VIBRATION

SHOCK

ACCELERATION

ALTITUDE

ENVIRONMENTAL DATA

AUXILIARY TEMP

VIBRATION

REV	DESCRIPTION	DATE	APPROVED
R	23615 DELETE ITEM 11; ADD REF...CONNECTOR NOTE	93/5/11	
T	26518 FIND NO 8 PART NO WAS 51204-730	94/10/24	RS
U	44746 ITEM 12 WAS 51704-025	01/05/31	

LIFE ELECTRICAL	50,000 CYCLES MIN.
LIFE MECHANICAL	100,000 CYCLES MIN.
MAX. WEIGHT	5 LBS. 8 OZ.
OPERATING TIME	29MS MAX. AT 28 VDC 25°C
RELEASE TIME	29MS MAX. AT 28 VDC 25°C
CONTACT BOUNCE	3 MS MAX.

3PDT SIDE STABLE	115/200 VAC 400HZ
250 AMP	
250 AMP	
175 AMP	
2500 AMP	

6PST NO 6PST NC	28 VDC.
5 AMP	
5 AMP	
2 AMP	

CONTINUOUS (ECONOMIZING)	18 TO 30 VDC
18 VDC	
7 VOLTS TO 1 VOL T	
48.5520K AT 25°C	
4.5 OHM/20K AT 25°C	
0.7 AMP MAX. AT 25°C	
6 AMP MAX. AT 25°C	

DUTY CYCLE	18 TO 30 VDC
NOM. COIL VOLTAGE	18 VDC
PICKUP MAX.	7 VOLTS TO 1 VOL T
DROPOUT VOL TAGE	48.5520K AT 25°C
RESISTANCE HOLD	4.5 OHM/20K AT 25°C
INRUSH	0.7 AMP MAX. AT 25°C
CURRENT HOLD	6 AMP MAX. AT 25°C
INRUSH	

ENVIRONMENTAL DATA	-70°C TO 71°C MAX
AUXILIARY TEMP	.06 INCH DIA FROM 5 TO 55 HZ
VIBRATION	10 G'S FROM 55 TO 500 HZ
SHOCK	25 G'S FOR 6 TO 9 M SEC.
ACCELERATION	15 G'S
ALTITUDE	50,000 FEET MAX.

ENVIRONMENTAL DATA	-70°C TO 71°C MAX
AUXILIARY TEMP	.06 INCH DIA FROM 5 TO 55 HZ
VIBRATION	10 G'S FROM 55 TO 500 HZ
SHOCK	25 G'S FOR 6 TO 9 M SEC.
ACCELERATION	15 G'S
ALTITUDE	50,000 FEET MAX.

ENVIRONMENTAL DATA	-70°C TO 71°C MAX
AUXILIARY TEMP	.06 INCH DIA FROM 5 TO 55 HZ
VIBRATION	10 G'S FROM 55 TO 500 HZ
SHOCK	25 G'S FOR 6 TO 9 M SEC.
ACCELERATION	15 G'S
ALTITUDE	50,000 FEET MAX.

ENVIRONMENTAL DATA	-70°C TO 71°C MAX
AUXILIARY TEMP	.06 INCH DIA FROM 5 TO 55 HZ
VIBRATION	10 G'S FROM 55 TO 500 HZ
SHOCK	25 G'S FOR 6 TO 9 M SEC.
ACCELERATION	15 G'S
ALTITUDE	50,000 FEET MAX.

ENVIRONMENTAL DATA	-70°C TO 71°C MAX
AUXILIARY TEMP	.06 INCH DIA FROM 5 TO 55 HZ
VIBRATION	10 G'S FROM 55 TO 500 HZ
SHOCK	25 G'S FOR 6 TO 9 M SEC.
ACCELERATION	15 G'S
ALTITUDE	50,000 FEET MAX.

ENVIRONMENTAL DATA	-70°C TO 71°C MAX
AUXILIARY TEMP	.06 INCH DIA FROM 5 TO 55 HZ
VIBRATION	10 G'S FROM 55 TO 500 HZ
SHOCK	25 G'S FOR 6 TO 9 M SEC.
ACCELERATION	15 G'S
ALTITUDE	50,000 FEET MAX.

ENVIRONMENTAL DATA	-70°C TO 71°C MAX
AUXILIARY TEMP	.06 INCH DIA FROM 5 TO 55 HZ
VIBRATION	10 G'S FROM 55 TO 500 HZ
SHOCK	25 G'S FOR 6 TO 9 M SEC.
ACCELERATION	15 G'S
ALTITUDE	50,000 FEET MAX.

ENVIRONMENTAL DATA	-70°C TO 71°C MAX
AUXILIARY TEMP	.06 INCH DIA FROM 5 TO 55 HZ
VIBRATION	10 G'S FROM 55 TO 500 HZ
SHOCK	25 G'S FOR 6 TO 9 M SEC.
ACCELERATION	15 G'S
ALTITUDE	50,000 FEET MAX.

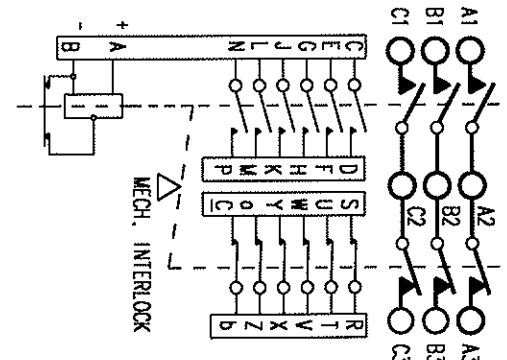
ENVIRONMENTAL DATA	-70°C TO 71°C MAX
AUXILIARY TEMP	.06 INCH DIA FROM 5 TO 55 HZ
VIBRATION	10 G'S FROM 55 TO 500 HZ
SHOCK	25 G'S FOR 6 TO 9 M SEC.
ACCELERATION	15 G'S
ALTITUDE	50,000 FEET MAX.

ENVIRONMENTAL DATA	-70°C TO 71°C MAX
AUXILIARY TEMP	.06 INCH DIA FROM 5 TO 55 HZ
VIBRATION	10 G'S FROM 55 TO 500 HZ
SHOCK	25 G'S FOR 6 TO 9 M SEC.
ACCELERATION	15 G'S
ALTITUDE	50,000 FEET MAX.

ENVIRONMENTAL DATA	-70°C TO 71°C MAX
AUXILIARY TEMP	.06 INCH DIA FROM 5 TO 55 HZ
VIBRATION	10 G'S FROM 55 TO 500 HZ
SHOCK	25 G'S FOR 6 TO 9 M SEC.
ACCELERATION	15 G'S
ALTITUDE	50,000 FEET MAX.

ENVIRONMENTAL DATA	-70°C TO 71°C MAX
AUXILIARY TEMP	.06 INCH DIA FROM 5 TO 55 HZ
VIBRATION	10 G'S FROM 55 TO 500 HZ
SHOCK	25 G'S FOR 6 TO 9 M SEC.
ACCELERATION	15 G'S
ALTITUDE	50,000 FEET MAX.

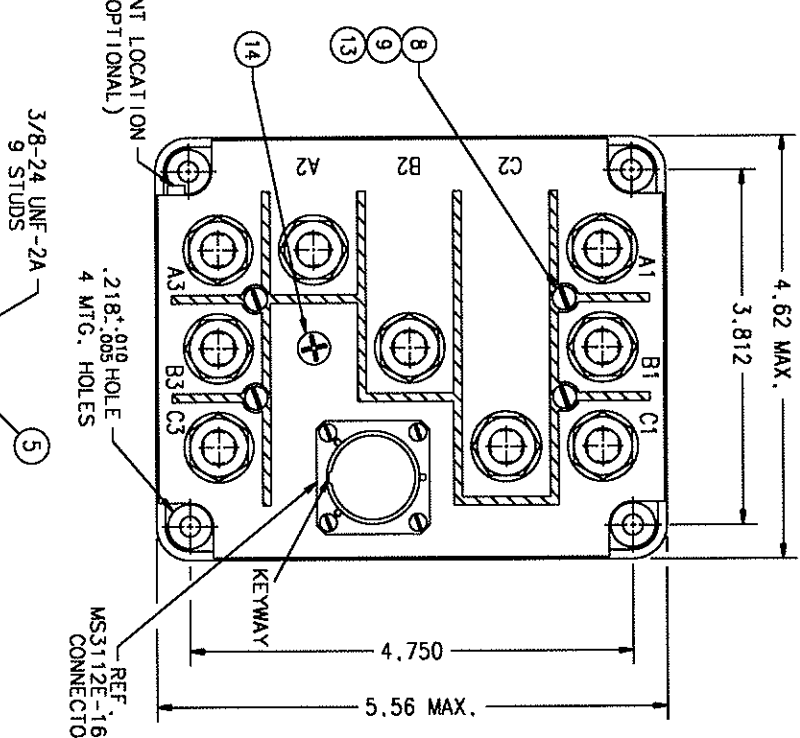
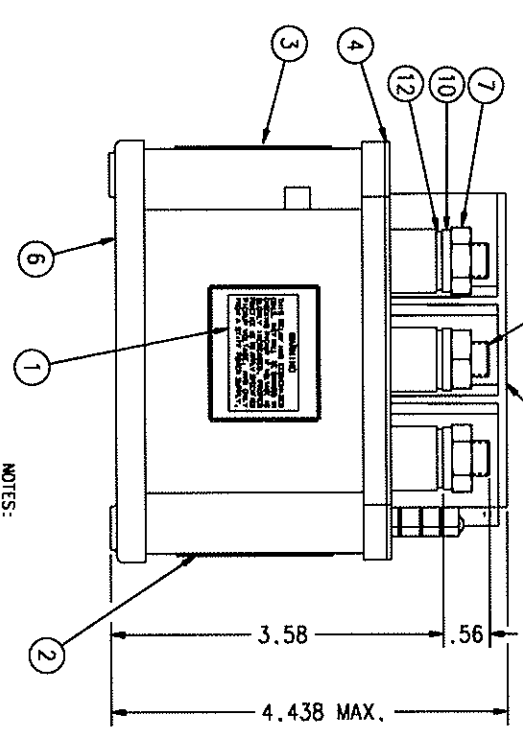
ENVIRONMENTAL DATA	-70°C TO 71°C MAX
AUXILIARY TEMP	.06 INCH DIA FROM 5 TO 55 HZ
VIBRATION	10 G'S FROM 55 TO 500 HZ
SHOCK	25 G'S FOR 6 TO 9 M SEC.
ACCELERATION	15 G'S
ALTITUDE	50,000 FEET MAX.



QTY	PART OR IDENTIFYING NO	NOMENCLATURE OR DESCRIPTION	YSCM NO	DRAWING OR SPECIFICATION	MATERIAL OR NOTE
14	51200-141	SCREW-3/16 SHEET METAL			STEEL
13	20584-002	WASHER-CAPITIVATING			BRASS
12	51704-024	WASHER-FLAT 5/8 X .25/64 X .062			BRASS
11					
10	51807-084	WASHER-LOCK 3/8 X .688 X .094 SPL IT			BRONZE
9	51804-011	WASHER-LOCK NO. 4			BRONZE
8	51214-030	SCREW 4-40 X 1 1/4 RD HD.			ST. STEEL
7	50407-164	NUT 3/8-24 X 5/8 X 7/32 HEX.			BRASS
6	32252-010	SHIELD-TERMINAL			
5	29805-002	SHIELD-TERMINAL			
4	32125-001	PLATE-BASE COVER			
3	32127-001	PLATE-BASE COVER			
2	16043-001	PLATE-WIRING DIAGRAM			
1	12771-001	PLATE-WARNING			
FIND NO					
REDO					

UNLESS OTHERWISE SPECIFIED DIMENSIONS ARE IN INCHES TOLERANCES ON	2 PL DEC. 3 PL DEC. ANGLES
±.06	±.010 ±.1°
CHK BY	CSC 01/06/11
ENGR	01/06/11
MFG	01/06/11
RELEASE	01/06/11
CONTR NO.	
GOVT APPVL	

SCALE	NONE	SHEET
SIZE	74063	B-394
CODE IDENT		
DWG NO.		
CONTRACTOR-3PDT SIDE STABLE;		
250 AMPS, 115/200V. 400HZ.		
093		



NOTES:  
1. MEET MIL-C-24010A (AS) PARA. 4.6.15.1 LOAD  
TRANSFER 3 PHASE, AC.

# Mouser Electronics

Authorized Distributor

Click to View Pricing, Inventory, Delivery & Lifecycle Information:

[TE Connectivity:](#)

[B394](#)