

# ECS-P73/P75

Programmable SMD Clock Oscillator

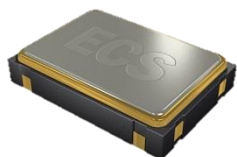


ECS-P73 (3.3V) and ECS-P75 (5V) is a one time programmable crystal controlled oscillator. This 7.0 x 5.0 mm very low profile SMD ceramic package is ideal for small run, quick delivery projects.

[Request a Sample](#)

## OPERATING CONDITIONS / ELECTRICAL CHARACTERISTICS

### ECS-P73/P75



- Programmable (1 Time)
- 3.3V & 5V Options
- PLL Technology
- Extended temp range
- Industry Standard Footprint
- PbFree/RoHS Compliant

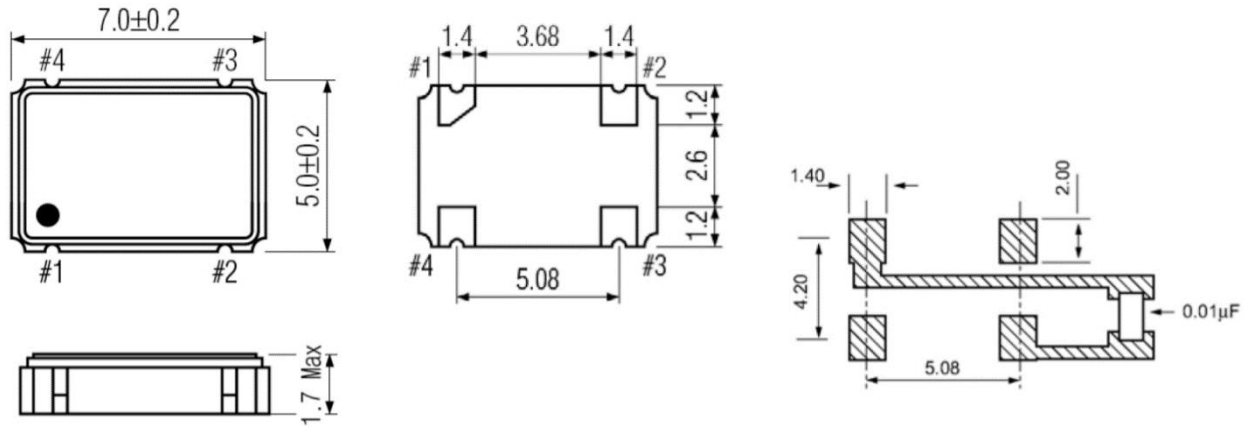
Parameters	Conditions	ECS-P73 (+3.3V)			ECS-P75 (+5V)			Units
		MIN	TYP	MAX	MIN	TYP	MAX	
Frequency Range		1.000		125.000	1.000		150.00	MHz
Operating Temperature	Standard	-10		+70	-10		+70	°C
	Extended (N Option)	-40		+85	-40		+85	°C
Storage Temperature		-55		+125	-55		+125	°C
Supply Voltage		+2.97	+3.3	+3.63	+4.5	+5.0	+5.5	VDC
Frequency Stability*	Option A			±100			±100	PPM
	Option B			±50			±50	PPM
Input Current				28			45	mA
Output Disable Current	Pin 1 = VIL			15			30	mA
Output Symmetry	@ 50% VCC Level			45/55			45/55	%
Rise and Fall Times	20% VCC to 80% VCC Level			4			4	ns
Jitter	1.0 ~ 33.0 MHz		±100	±250		±100	±250	pS p-p
	> 33.1 MHz		±50	±100		±50	±100	pS p-p
"0" Level	VOL			0.4			0.4	VDC
"1" Level	VOH	2.7			VCC-0.5			VDC
Output Load (HCMOS)	1.0 ~ 50.0 MHz			30			50	pF
	> 50.1 MHz			15			15	pF
Enable/Disable Time				150			100	ns
Start-up Time				10			10	ms

\* Inclusive of 25°C tolerance, operating temperature range, input voltage change, load change, aging, shock, and vibration.

### Part Numbering Guide: Example ECS-P73-20.000-AN

ECS	Series	Frequency MHz	Stability	Temperature Range
ECS	P73 = +3.3V P75 = +5.0V	20.000 = 20.000 MHz	A = ±100 PPM B = ±50 PPM	Blank = -10 ~ +70°C N = -40 ~ +85°C

**Package Dimensions (mm)**



**Figure 1) Top, Side, and Bottom views**

Pin Connections	
#1	Tri-State
#2	Ground
#3	Output
#4	VCC

**Figure 2) Land Pattern**

ECS-P73 (3.3V) Tri-State Control Voltage	
Pad 1	Pad 3
Open	Oscillation
+0.7V Min	Oscillation
+0.2V Max	High Impedance

ECS-P75 (5V) Tri-State Control Voltage	
Pad 1	Pad 3
Open	Oscillation
+2.0V Min	Oscillation
+0.8V Max	High Impedance