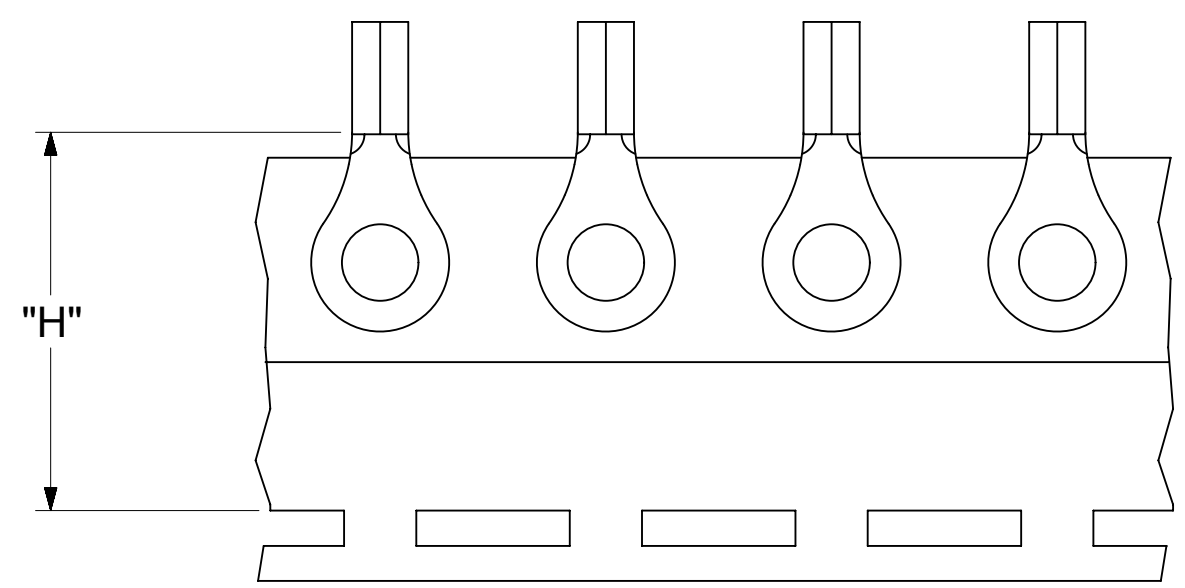
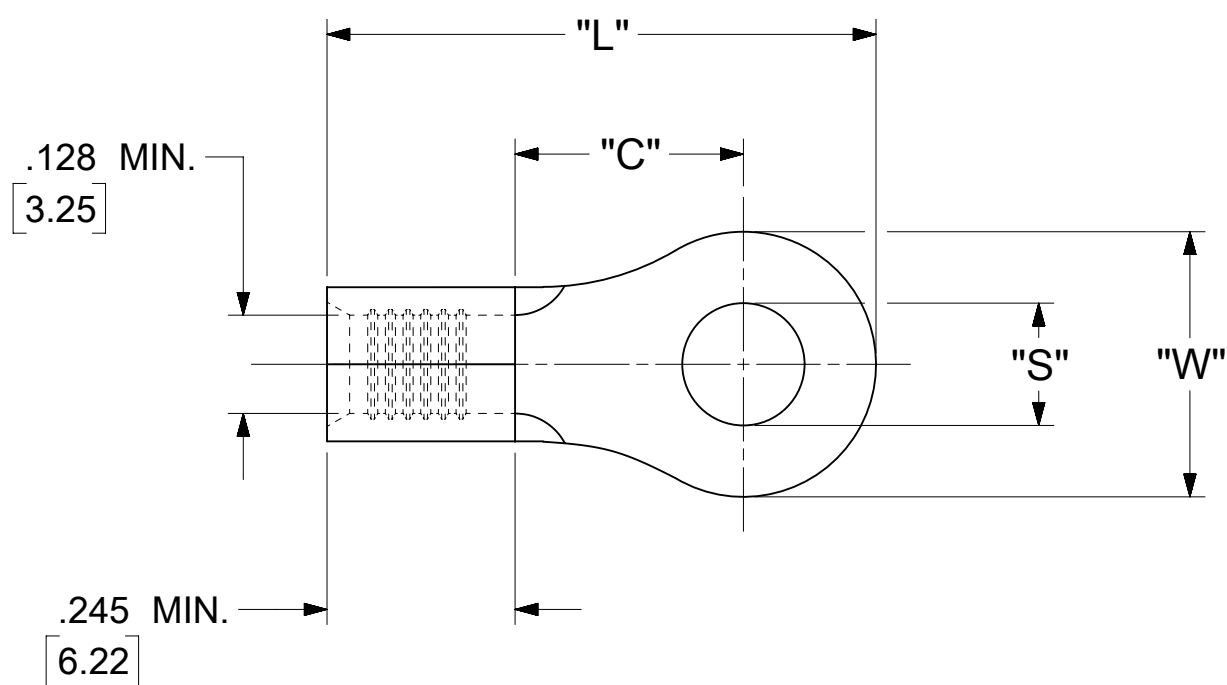


LOOSE PIECE		TAPE MOUNTED		SPECIFICATIONS					
MATERIAL NUMBER	ENGINEERING NUMBER	MATERIAL NUMBER	ENGINEERING NUMBER	STUD SIZE	"S" ±.005 [0.13]	"W" ±.010 [0.25]	"C" MIN.	"L" MAX.	"H"
190690192	C-101-12	---	---	12	.515 [13.08]	.750 [19.05]	.611 [15.52]	1.280 [32.51]	1.300 [33.02]
190690195	C-101-14	---	---	14	.265 [6.73]				
190690196	C-101-38	190690145	C-101-38T	38	.390 [9.91]				
---	---	---	---	56	.328 [8.33]				
190690198	C-101-76	190690146	C-101-76T	76	.453 [11.51]				
190690217	C-130-10	190690218	C-130-10T	10	.198 [5.03]	.530 [13.46]	.393 [9.98]	.952 [24.18]	.980 [24.89]
190690219	C-130-14	190690221	C-130-14T	14	.265 [6.73]				
---	---	---	---	38	.390 [9.91]				
190690223	C-130-56	190690225	C-130-56T	56	.328 [8.33]	.282 [7.16]	.306 [7.77]	.741 [18.82]	.980 [24.89]
---	---	---	---	4	.119 [3.02]				
190690230	C-136-06	190690232	C-136-06T	6	.146 [3.71]				
190690233	C-136-08	190690235	C-136-08T	8	.173 [4.39]				
190690236	C-140-10	---	---	10	.198 [5.03]				
190690238	C-140-14	190690240	C-140-14T	14	.265 [6.73]	.592 [15.04]	.468 [11.89]	1.056 [26.82]	1.172 [29.77]
190690241	C-140-38	190690243	C-140-38T	38	.390 [9.91]				
190690244	C-140-56	190690246	C-140-56T	56	.328 [8.33]				
---	---	---	---	209	.209 [5.31]				
---	---	---	---	413	.413 [10.50]				



PARTS ON TAPE

- NOTES:
1. MATERIAL: COPPER .040±.001 [1.02] STOCK THK.
 2. PLATING: ELECTRO-TIN (.0003 MIN).
 3. WIRE SIZE: 12-10 AWG
4.0-6.0 MM²
 4. "UL" LISTING #E32244
"CSA" LISTING #18689
 5. ALL DIMENSIONS IN INCHES/[MM].
 6. PARTS ARE ROHS COMPLIANT.
 7. DIMS. SHOWN ARE FOR REFERENCE ONLY.

SYMBOLS	THIS DRAWING CONTAINS INFORMATION THAT IS PROPRIETARY TO MOLEX ELECTRONIC TECHNOLOGIES, LLC AND SHOULD NOT BE USED WITHOUT WRITTEN PERMISSION			
	DIMENSION UNITS	SCALE		CURRENT REV DESC: MIGRATION TO ECTR/NX
▽ = 0	INCH/MM	NTS		EC NO: 619818 DRWN: ABENJAMINLW 2019/06/18 CHK'D: GROJAS01 2019/06/27 APPR: JMACNEIL 2019/07/10
▽ = 0	GENERAL TOLERANCES (UNLESS SPECIFIED)			
▽ = 0		MM	INCH	INITIAL REVISION: DRWN: EDWIN 1992/02/10 APPR: JMACNEIL 2019/07/10
▽ = 0	4 PLACES	±	±	
▽ = 0	3 PLACES	±	± 0.005	THIRD ANGLE PROJECTION
▽ = 0	2 PLACES	± 0.13	± 0.01	
▽ = 0	1 PLACE	± 0.25	±	DRAWING
▽ = 0	0 PLACES	±	±	SERIES
▽ = 0	ANGULAR TOL	± 0.5 °		C-SIZE
▽ = 0	DRAFT WHERE APPLICABLE MUST REMAIN WITHIN DIMENSIONS			19069
▽ = 0				

molex

RING TONGUE TERMINAL
KRIMPTITE 100-SERIES

PRODUCT CUSTOMER DRAWING

DOCUMENT NUMBER	DOC TYPE	DOC PART	REVISION
190690192	PSD	000	A

MATERIAL NUMBER	CUSTOMER	SHEET NUMBER
SEE TABLE	GENERAL MARKET	1 OF 1

NOTES: $\pm .001$

① MAT'L: COPPER (STOCK TKN $\frac{.040}{1.02}$)

PLATING: ELECTRO-TIN

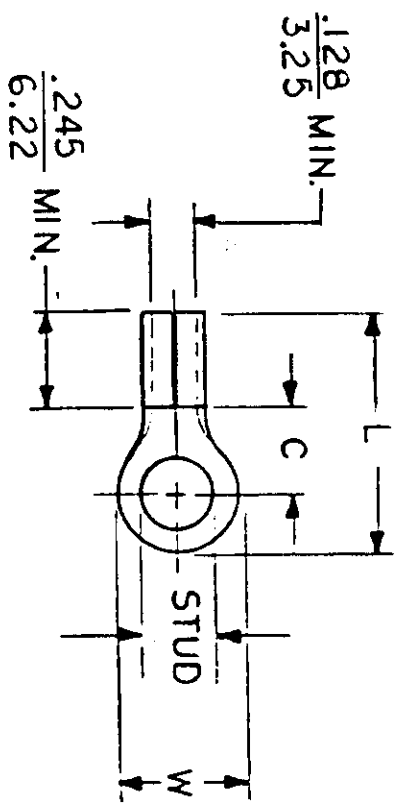
STUD SIZES: ($\pm .005$)

02 = .094 209 = .209
 04 = .119 413 = .413
 06 = .146
 08 = .173
 10 = .198
 14 = .265
 56 = .328
 38 = .390

UL LISTING # E32244
 CSA LISTING # 18689

ALL DIMENSIONS = INCHES
 M M

WIRE SIZE: 12-10 AWG
 4.0-6.0 MM²



FILE NO. C-CD-101-01

PART NUMBER	"W" ±.010	"C" MIN.	"L" MAX.	REFERENCE		TITLE:	AVAILABLE STUD SIZES
				SCALE:	NTS		
C-101-	$\frac{.750}{19.05}$	$\frac{.611}{15.52}$	$\frac{1.280}{32.51}$	DRWN. BY: <i>Ed Frank</i>	DATE: 2-10-92	RING TONGUE	14, 56, 38, 76, 12
C-128-	$\frac{.375}{9.53}$	$\frac{.303}{7.70}$	$\frac{.785}{19.94}$	CHKD. BY:		TERMINAL	04, 06, 08, 10, 209
C-130-	$\frac{.530}{13.46}$	$\frac{.393}{9.98}$	$\frac{.952}{24.18}$	APPRD. BY:		KRIMP TITE	10, 14, 56, 38, 209, 413
C-136-	$\frac{.282}{7.16}$	$\frac{.306}{7.77}$	$\frac{.741}{18.82}$			100-SERIES	
C-140-	$\frac{.592}{15.04}$	$\frac{.468}{11.89}$	$\frac{1.056}{26.82}$				
DIMENSIONAL TOLERANCES UNLESS OTHERWISE SPECIFIED							
FRAC.	DEC.	ANG.					
±	±	±					



DWG. NO. A CUSTOMER DWG.

Mouser Electronics

Authorized Distributor

Click to View Pricing, Inventory, Delivery & Lifecycle Information:

[Molex:](#)

[19069-0626](#)