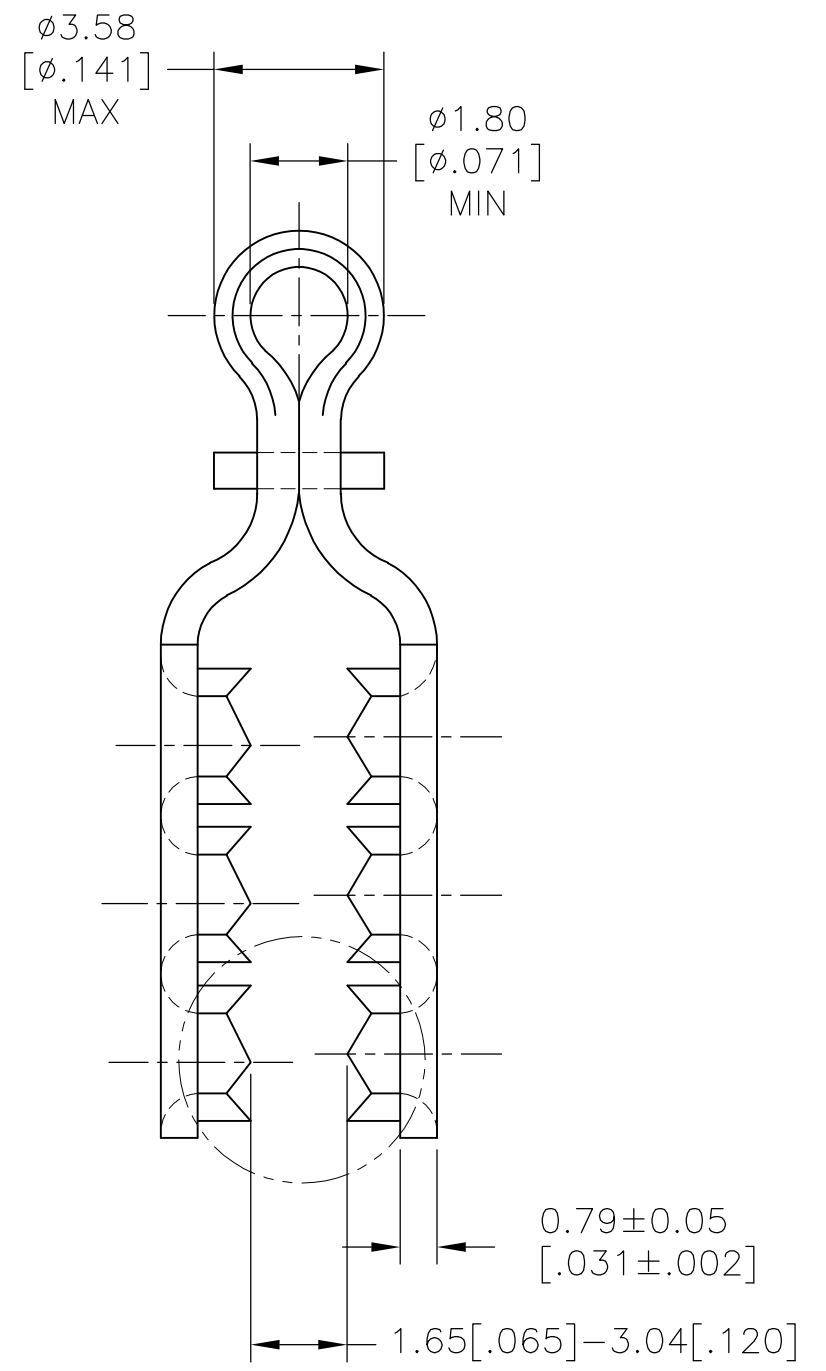
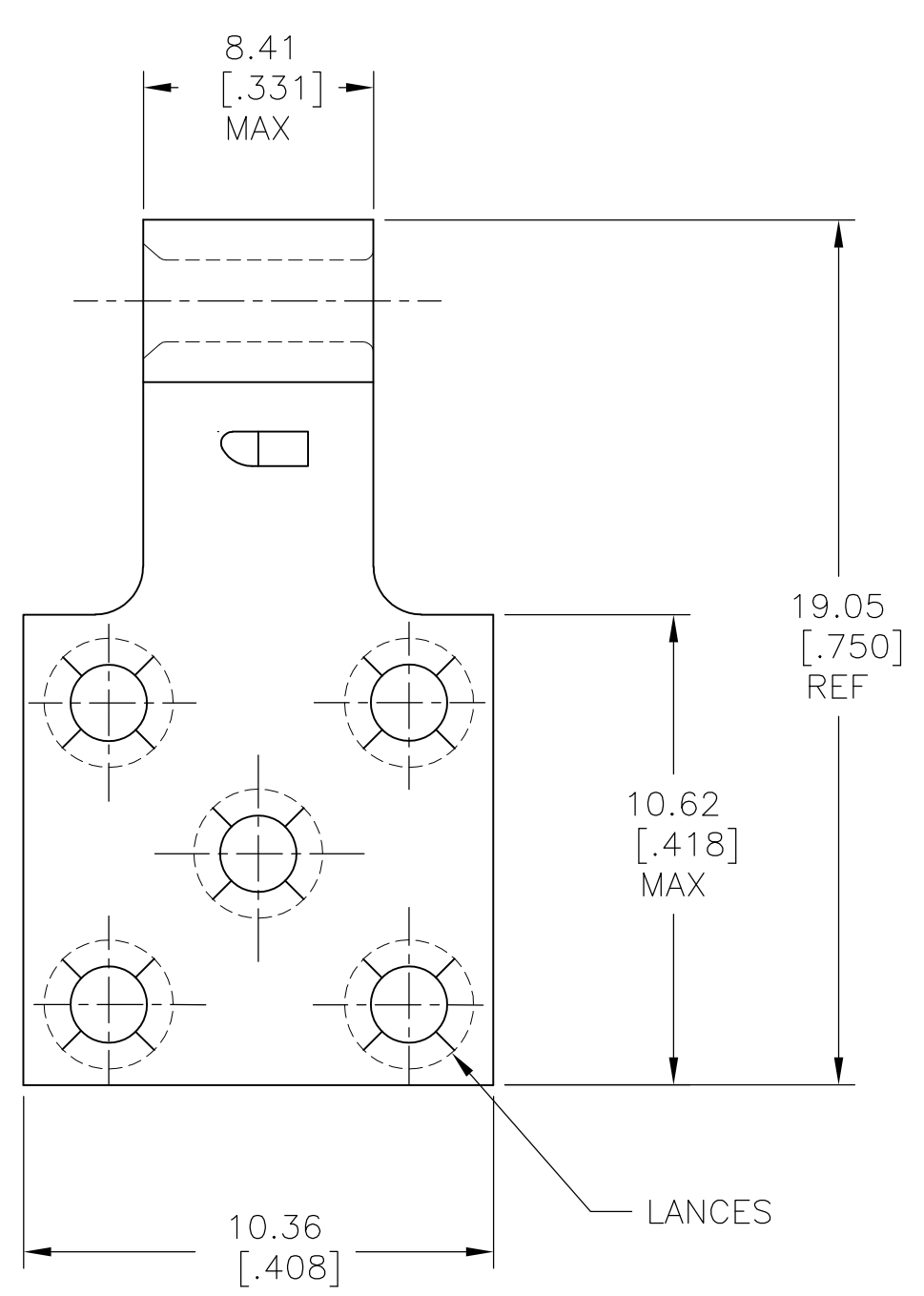


THIS DRAWING IS UNPUBLISHED. RELEASED FOR PUBLICATION
 © COPYRIGHT - By - ALL RIGHTS RESERVED.

REVISIONS				
P	LTR	DESCRIPTION	DATE	APVD
E1		REDRAWN PER ECO-16-008891	17JUN2016	NK DR



THIS DRAWING IS A CONTROLLED DOCUMENT.		DWN NAGALAKSHMI K 18JUN2016	STE TE Connectivity	
DIMENSIONS: mm [INCHES]		CHK ROHDE DANIEL F 18JUN2016		
TOLERANCES UNLESS OTHERWISE SPECIFIED:		APVD ROHDE DANIEL F 18JUN2016	NAME	
<ul style="list-style-type: none"> 0 PLC ± - 1 PLC ± - 2 PLC ± - 3 PLC ± 0.20 [.008] 4 PLC ± - ANGLES ± 5° 		PRODUCT SPEC	TERMI-FOIL, DOUBLE FACE TAP W/BARREL WIRE SIZE: 22-16	
MATERIAL: COPPER (QQ-C-576) TIN PLATE (MIL-T-10727)		FINISH: -	APPLICATION SPEC	RESTRICTED TO
		WEIGHT: -	SIZE: A3	CAGE CODE: 00779
		CUSTOMER DRAWING	DRAWING NO: C-52584	RESTRICTED TO: -
		SCALE: 3:1	SHEET: 1 OF 1	REV: E1

Mouser Electronics

Authorized Distributor

Click to View Pricing, Inventory, Delivery & Lifecycle Information:

[TE Connectivity:](#)

[52584](#)