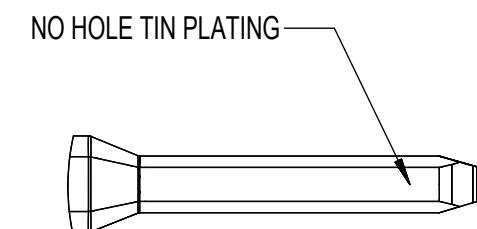


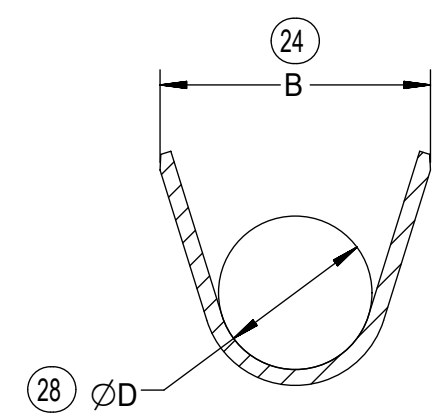
PRECIOUS METAL PLATED BLADE



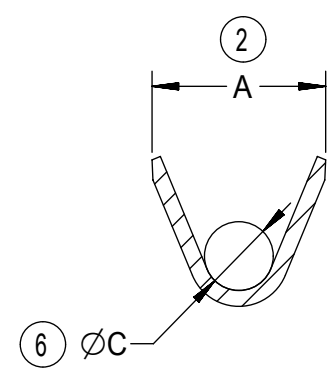
TIN PLATED BLADE

NOTES: (UNLESS OTHERWISE SPECIFIED)

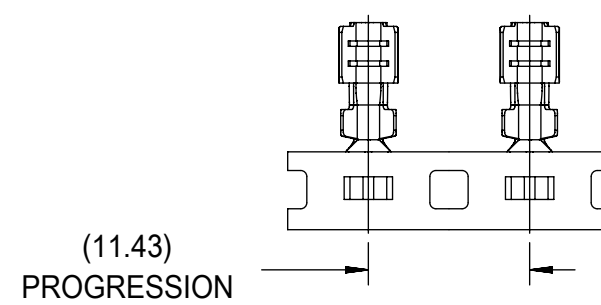
- MATING TERMINAL SHOWN ON SD-34083-002
- MATERIAL: ASTM B422, UNS C19025, HR04  
THICKNESS: 0.30 mm ±0.01  
TEMPER: FULL HARD (REF)  
TENSILE: 496 MIN MPA
- TIN PLATED TERMINAL FINISH  
OVERALL UNDERPLATE ELECTRODEPOSITED NICKEL  
OVERALL ELECTRODEPOSITED REFLOW TIN
- GOLD PLATED TERMINAL FINISH  
OVERALL UNDERPLATE ELECTRODEPOSITED DUCTILE SULFAMATE NICKEL  
CONTACT AREA - ELECTRODEPOSITED GOLD  
GRIP AREA - ELECTRODEPOSITED 100% TIN MATTE FINISH
- SILVER PLATED TERMINAL FINISH  
OVERALL UNDERPLATE ELECTRODEPOSITED DUCTILE SULFAMATE NICKEL  
CONTACT AREA - ELECTRODEPOSITED PURE SILVER (0.5% MAX IMPURITIES) SEMI-BRIGHT FINISH  
- SILVER ANTI-TARNISH : EVABRITE  
GRIP AREA - ELECTRODEPOSITED 100% TIN MATTE FINISH
- MEETS PERFORMANCE SPECIFICATION FOR CABLE TO TERMINAL ELECTRICAL CRIMPS PER SAE/USCAR-21 (2/2004)
- MEETS PERFORMANCE STANDARD FOR AUTOMOTIVE ELECTRICAL CONNECTOR SYSTEMS FOR SAE/USCAR-2, REV. 4 (TEMP CLASS 3) (5/2004)
- MEETS ELECTRICAL CONNECTION SYSTEM DESIGN SPECIFICATION (SDS) REV.15 (9/2007)
- MEETS FIELD CORRELATED LIFE TEST (FCLT) PER SAE/USCAR-20 (6/2004)
- REFERENCE FORD CAVITY SPECIFICATION 97BG-14421-ADA
- REFERENCE AS-34080-001 FOR CRIMP INFORMATION
- REFERENCE PK-31300-516 FOR REEL DIRECTION
- REFERENCE PS-34083-002 FOR PRODUCT SPECIFICATION



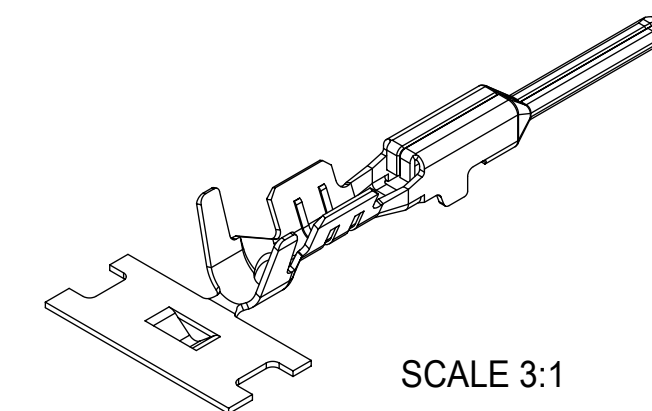
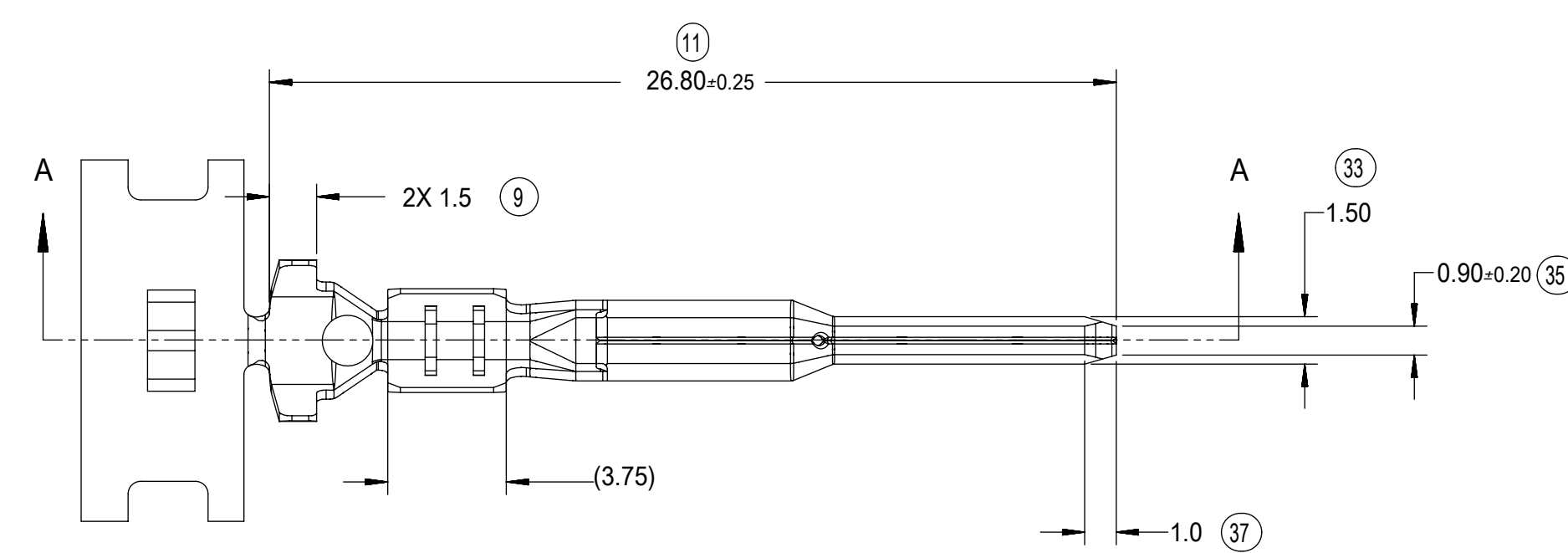
SECTION B-B  
Scale 7:1



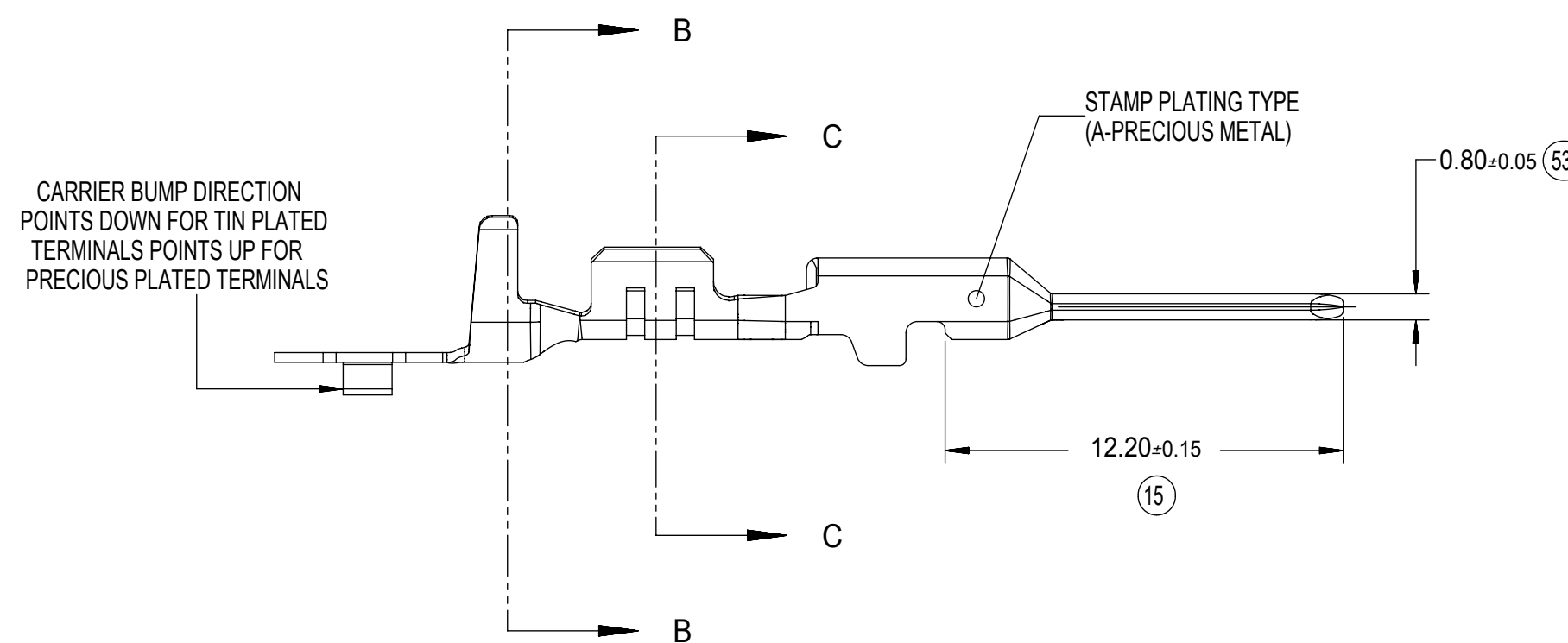
SECTION C-C  
Scale 7:1



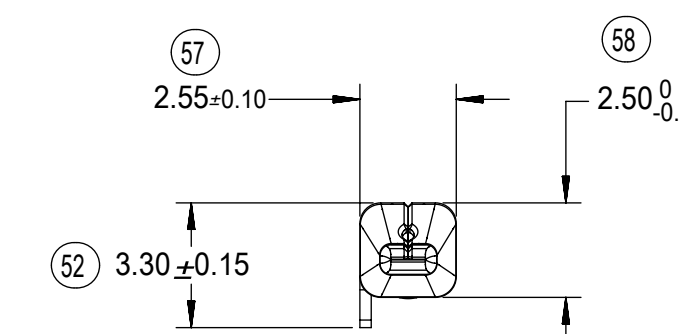
(11.43)  
PROGRESSION



SCALE 3:1



SECTION A-A



FAMILY	GENDER	SEALING	PLATING	PART NUMBER	PAYOFF DIRECTION	GRIP CODE	WIRE SIZES *	A ±0.3	B ±0.20	C ±0.3	D ±0.15	N ±0.10	SPECIAL CHARACTERISTICS
MX150	BLADE	WIRE SEAL	Sn	34080-0003	RIGHT (B)	22	22AWG 0.35-0.50mm	2.5	4.85	0.9	2.90	0.55	HIGH PERFORMANCE Sn
				34080-1003	LEFT (D)								
				34080-0002	RIGHT (B)	18	20/18AWG 0.75-1.00mm	3.3	5.00	1.3	2.90	0.70	
				34080-1002	LEFT (D)								
				34080-0001	RIGHT (B)	14	16/14AWG 1.50-2.00mm	3.6	5.00	1.7	2.90	0.90	
				34080-1001	LEFT (D)								
			Au	34080-0106	RIGHT (B)	22	22AWG 0.35-0.50mm	2.5	4.85	0.9	2.90	0.55	HIGH PERFORMANCE Au
				34080-1106	LEFT (D)								
				34080-0104	RIGHT (B)	18	20/18AWG 0.75-1.00mm	3.3	5.00	1.3	2.90	0.70	
				34080-1104	LEFT (D)								
				34080-0102	RIGHT (B)	14	16/14AWG 1.50-2.00mm	3.6	5.00	1.7	2.90	0.90	
				34080-1102	LEFT (D)								
Ag	34080-0206	RIGHT (B)	22	22AWG 0.35-0.50mm	2.5	4.85	0.9	2.90	0.55	HIGH PERFORMANCE Ag			
	34080-1206	LEFT (D)											
	34080-0204	RIGHT (B)	18	20/18AWG 0.75-1.00mm	3.3	5.00	1.3	2.90	0.70				
	34080-1204	LEFT (D)											
34080-0202	RIGHT (B)	14	16/14AWG 1.50-2.00mm	3.6	5.00	1.7	2.90	0.90					
34080-1202	LEFT (D)												

\* SEE AS-34080-001 FOR SPECIFIC WIRE TYPES

SYMBOLS	THIS DRAWING CONTAINS INFORMATION THAT IS PROPRIETARY TO MOLEX ELECTRONIC TECHNOLOGIES, LLC AND SHOULD NOT BE USED WITHOUT WRITTEN PERMISSION		CURRENT REV DESC:		
	DIMENSION UNITS	SCALE			
▽ = 0	mm	5:1			<b>MX 150 BLADE CABLE SEAL</b>
▽ = 0	GENERAL TOLERANCES (UNLESS SPECIFIED)				
▽ = 0	ANGULAR TOL ± 3.0°		EC NO: 628017		PRODUCT CUSTOMER DRAWING
▽ = 0	4 PLACES ±		DRWN: NVENKATESHSH 2019/05/11		
▽ = 0	3 PLACES ±		CHK'D: TOMSMITH 2019/12/23		DOCUMENT NUMBER: <b>SD-34080-001</b>
▽ = 0	2 PLACES ± 0.10		APPR: TOMSMITH 2019/12/23		
▽ = 0	1 PLACE ± 0.3		INITIAL REVISION:		DOC TYPE: PSD   DOC PART: 001   REVISION: C3
▽ = 0	0 PLACES ±		DRWN: KFERGUSON 2008/06/09		
□ = 0	DRAFT WHERE APPLICABLE MUST REMAIN WITHIN DIMENSIONS		APPR: BMOSEY 2008/09/06		MATERIAL NUMBER: SEE TABLE   CUSTOMER: GENERAL MARKET   SHEET NUMBER: 1 OF 1
▽ = 0	THIRD ANGLE PROJECTION	DRAWING	SERIES		
		D-SIZE	34080		