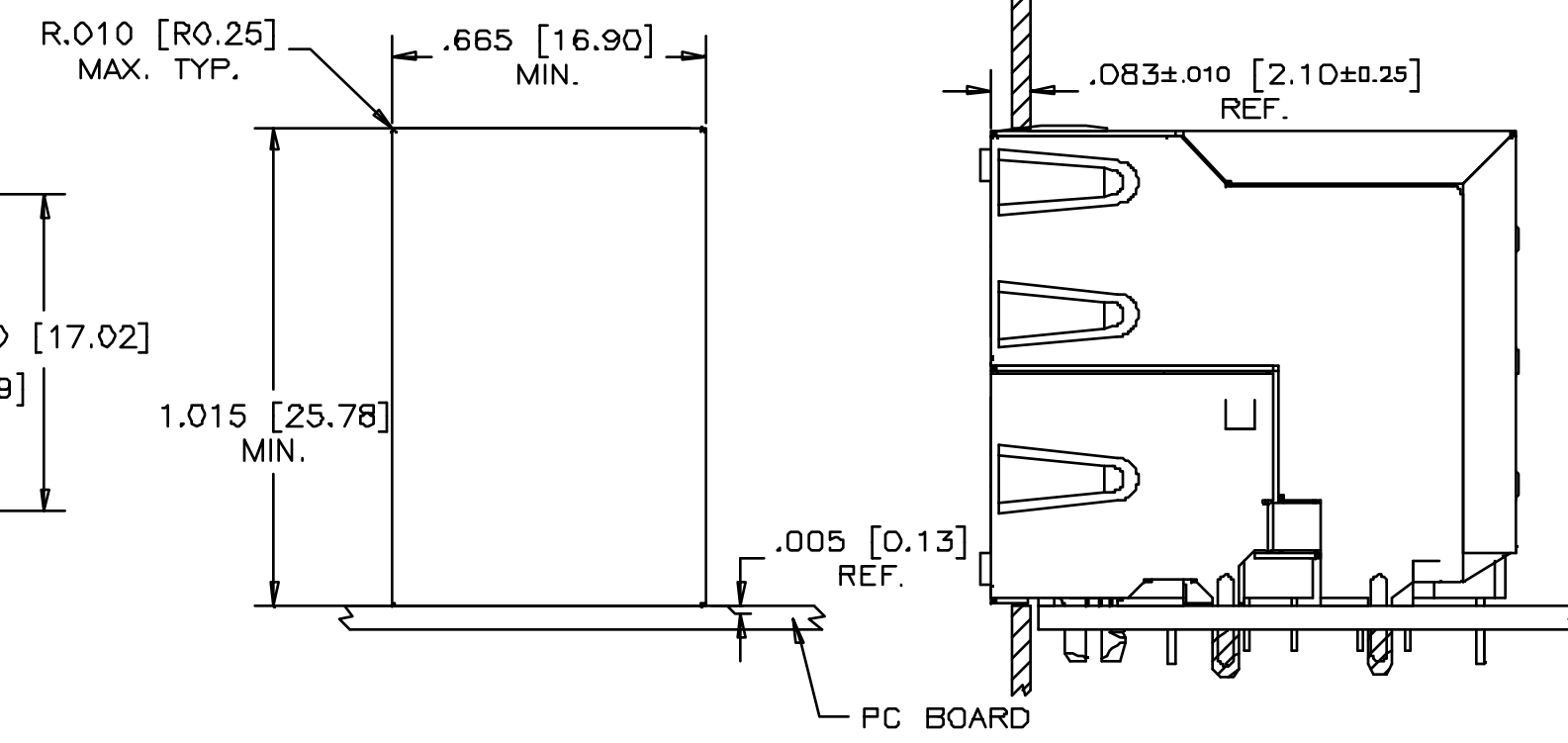
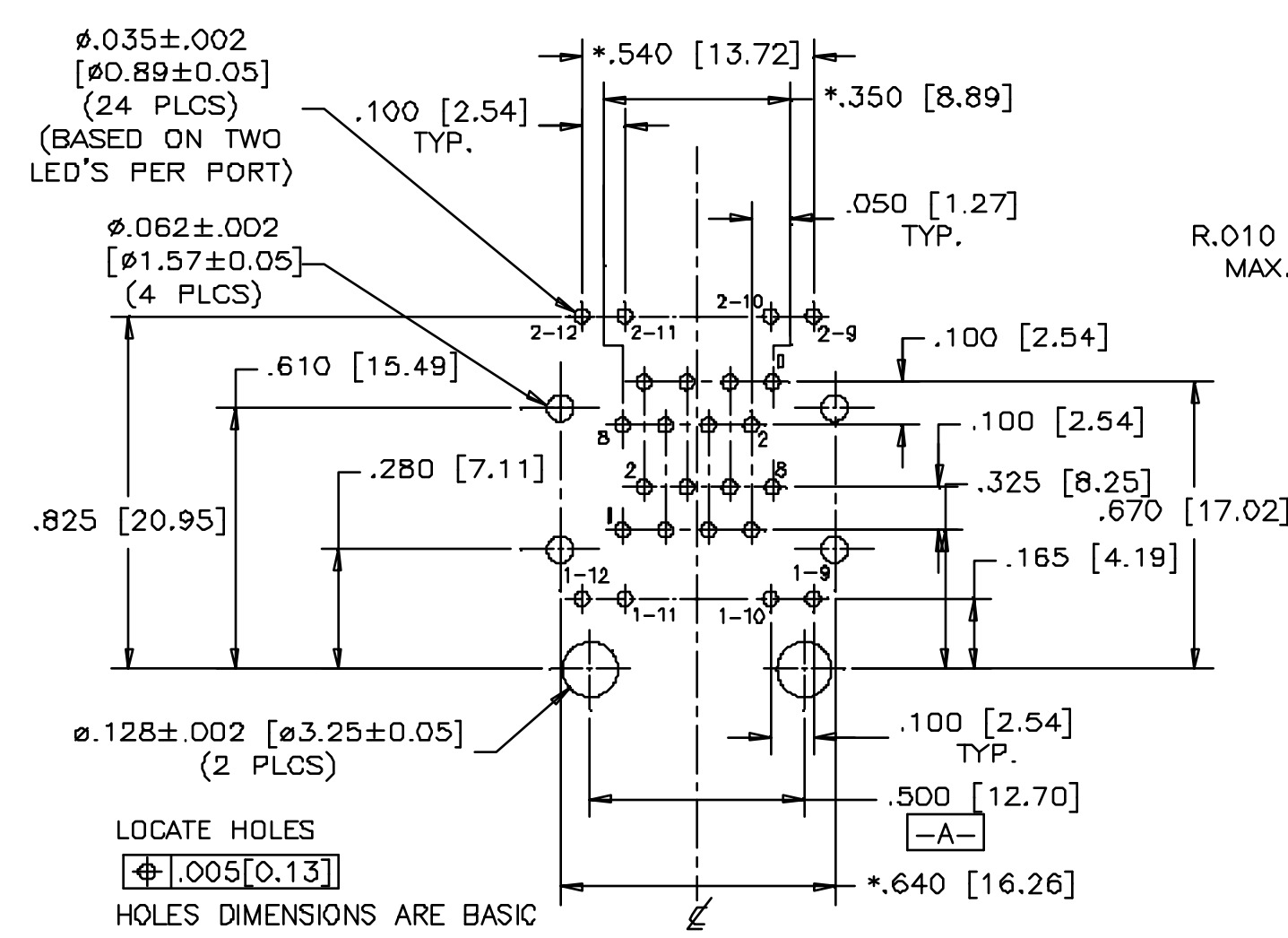
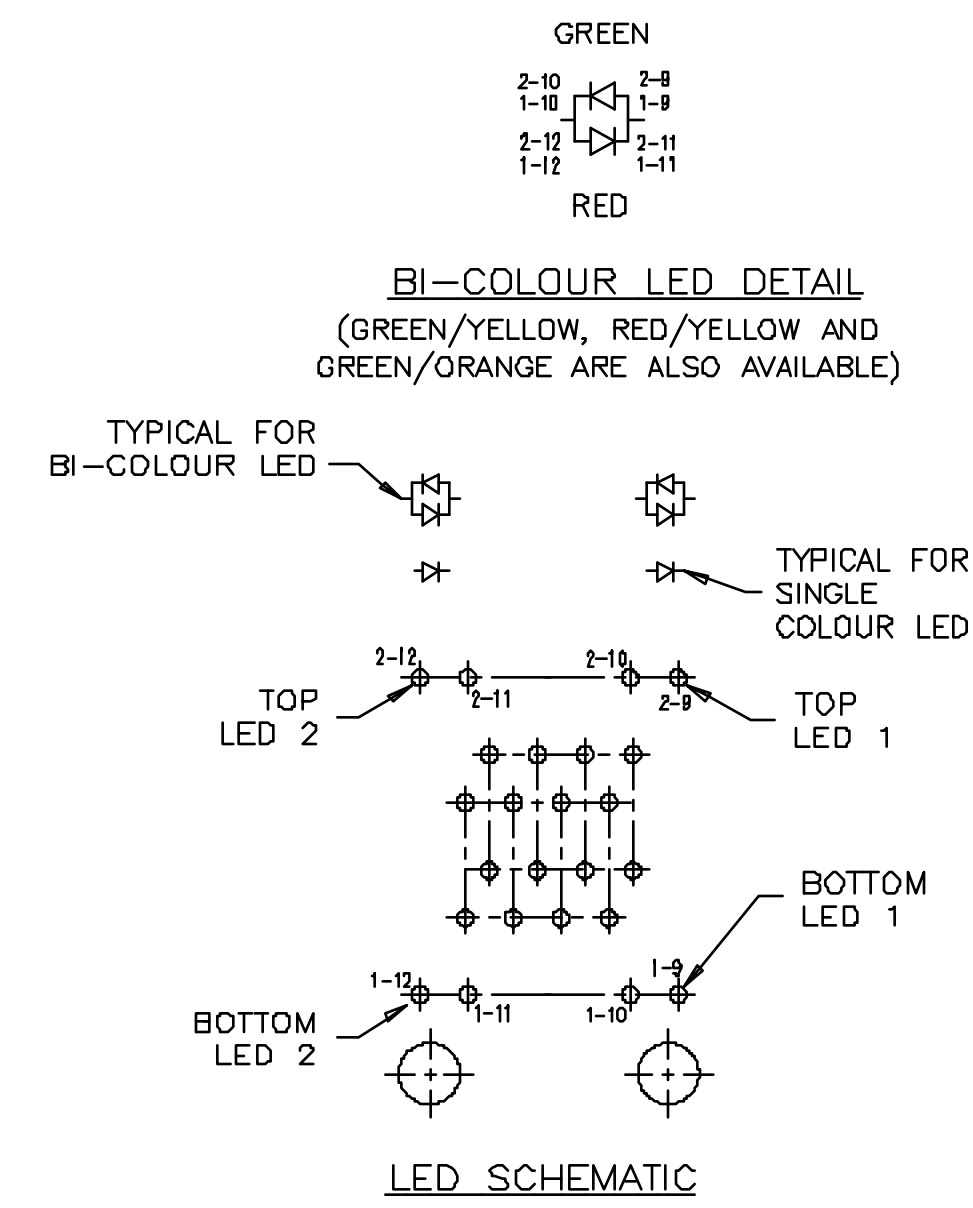
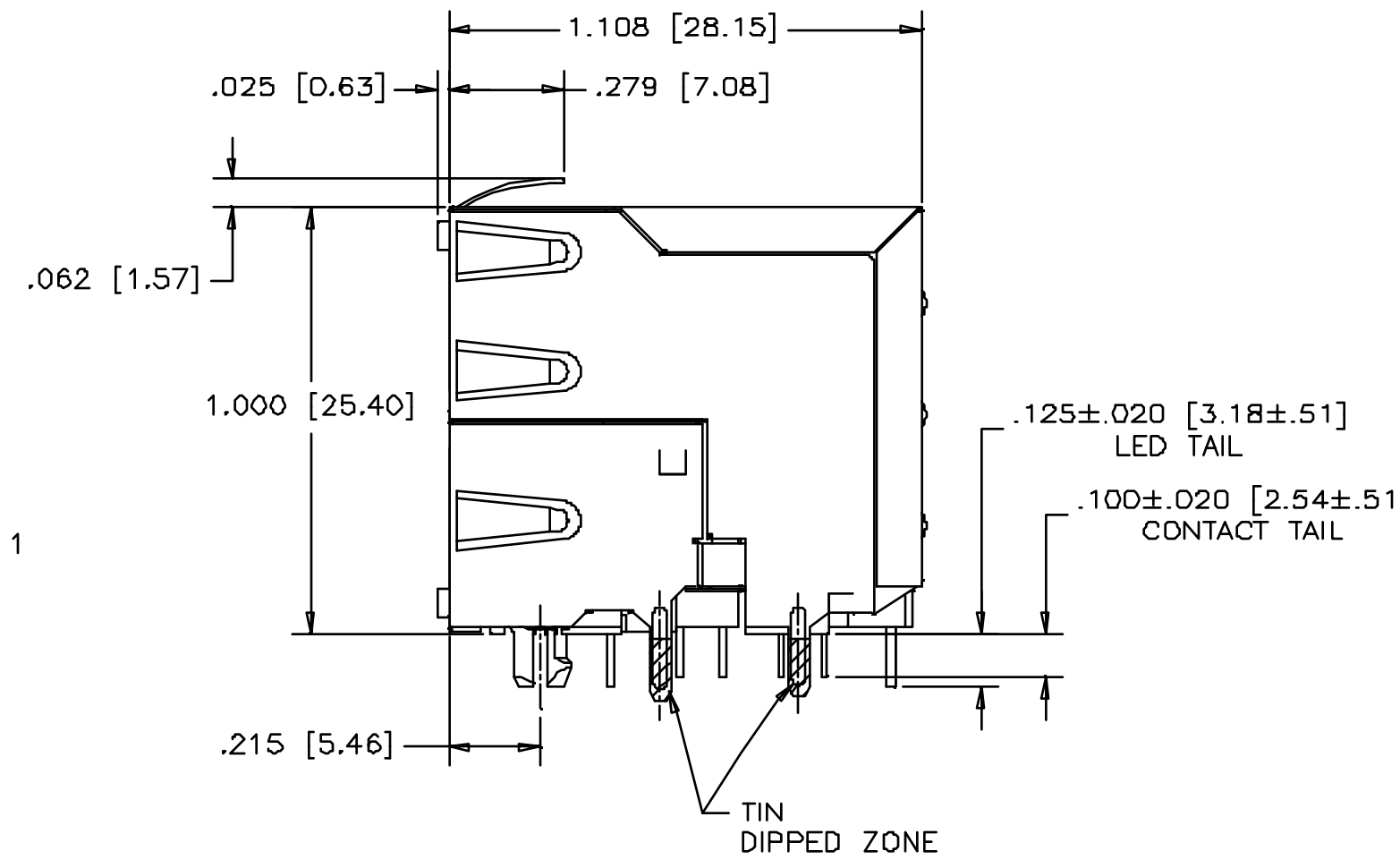
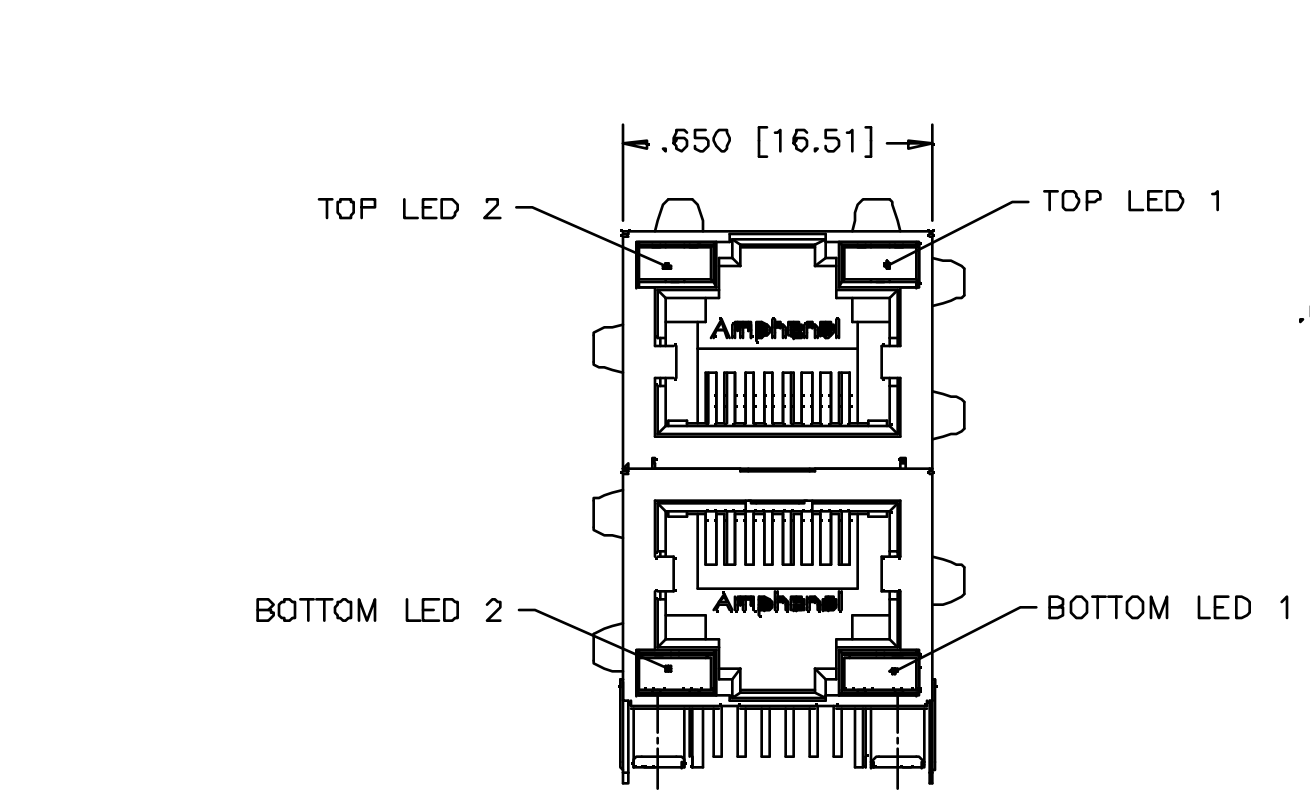


REVISIONS				
SYM	ZONE	ECN, ERN NO.	DATE	APPRD.
F		PROPOSAL	SEP 13/12	A.G.
G		ADD DISTANCE BETWEEN PANEL AND CONNECTOR	MAY 06/13	L.CHAN
H		ADD OPERATING TEMPERATURE	MAY 10/13	L.CHAN
J		ADD DIMENSION OF TAB AND LED LOCATION.	FEB.26/15	L.CHAN



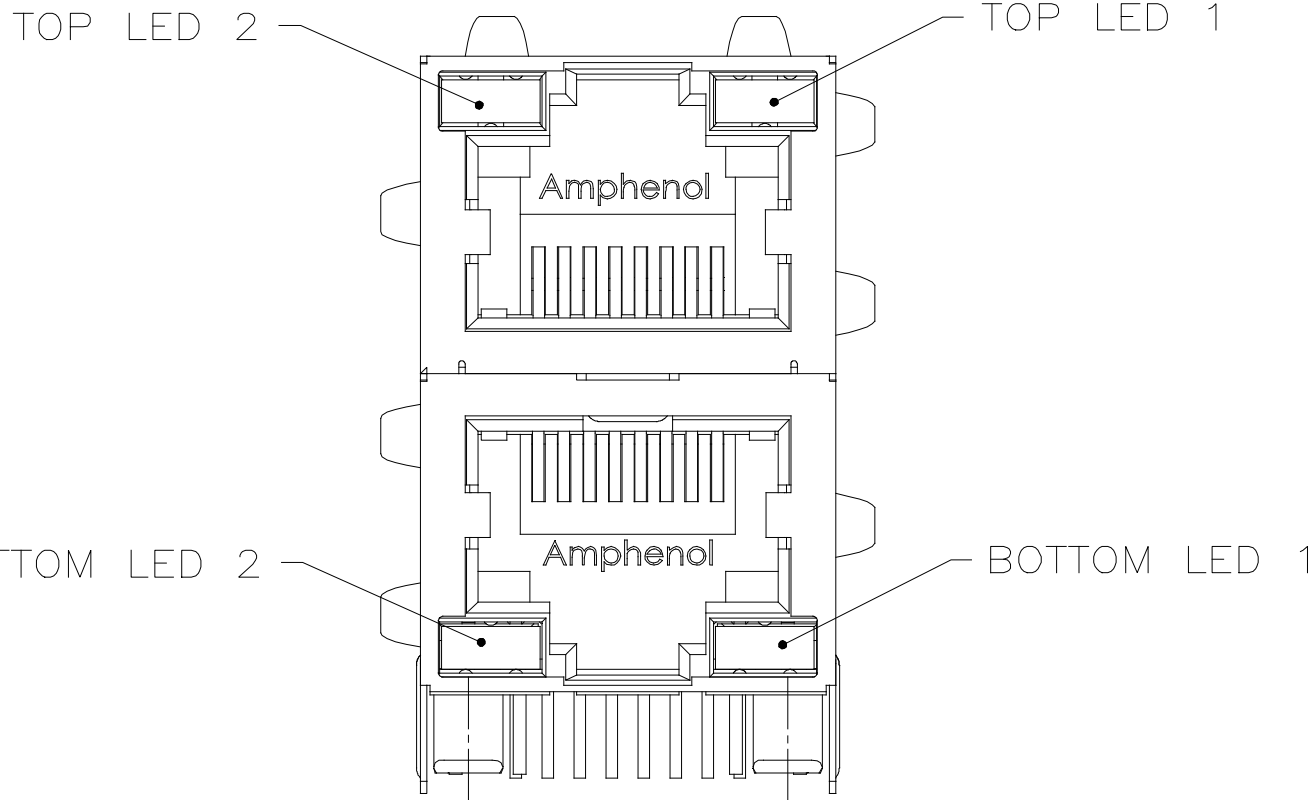
MATERIALS:
CONTACTS: PHOSPHOR BRONZE, SELECTIVELY PLATED WITH 50 MICROINCHES MIN. GOLD ON MATING AREAS. 50 MICROINCHES MIN. NICKEL OVERALL. 100 MICROINCHES MIN. MATTE TIN OR GOLD FLASH ON TAILS.
HOUSING: HIGH TEMPERATURE THERMOPLASTIC FLAMMABILITY RATING UL 94V-0, BLACK
SHIELD: COPPER ALLOY. PLATING: NICKEL WITH TIN DIPPED PCB TAILS.
RECOMMENDED SOLDERING TEMPERATURE: WAVE SOLDERING AT 260°C MAXIMUM FOR 5 SEC MAXIMUM

AMPHENOL PART NO.: RJSAE-538X-02X
REFER TO LED OPTIONS DRAWING FOR ORDERING CODES

DIMENSIONS MARKED WITH * ARE SYMMETRICAL ABOUT CENTER LINE AS DEFINED BY DATUM -A-

UNLESS SPECIFIED OTHERWISE		DRAWN	PAULW	APR19/06	Amphenol Canada Corp. www.amphenolcanada.com	
PRIMARY UNITS INCHES		CHECKED				
SECONDARY MILLIMETERS		M.E. APP'D			STACKABLE 2x1 PORT MODULAR JACK, 8 POSITION, 8 CONTACTS, WITH LEDs, SHIELDED- RoHS COMPLIANT	
REFERENCE IN PARENTHESES		Q.A. APP'D				
1 DECIMAL PLACE 2 DECIMAL PLACES 3 DECIMAL PLACES ±0.015 ANGULAR DEGREES ±1.5°		DWG APP'D	CHIGOW	APR19/06	DWG NO. P-RJSAE-538X-02X	
		ENG. REL. NO.				
		REF.			REV J	
		THIRD ANGLE PROJECTION		DO NOT SCALE DRAWING	CODE ID NO. 03554	DWG SIZE
					SCALE	SHEET 1 OF 1

THIS DOCUMENT CONTAINS PROPRIETARY INFORMATION AND SUCH INFORMATION MAY NOT BE DISCLOSED TO OTHERS FOR ANY PURPOSE OR USED FOR MANUFACTURING PURPOSES WITHOUT WRITTEN PERMISSION FROM AMPHENOL CANADA CORP.



REVISIONS				
SYM	ZONE	ECN, ERN NO.	DATE	APPRD.
H		PROPOSAL	JUL04/12	L.CHAN
J		UPDATE ROHS STAMP	JAN21/13	L.CHAN

LED SPECIFICATIONS:
FORWARD VOLTAGE: 2.1 VOLTS TYP.
REVERSE VOLTAGE: 5.0 VOLTS MIN.
LUMINOUS INTENSITY: 0.5 mCd MIN.
(AT If=2mA)
STORAGE TEMPERATURE: -40° TO 85° C
PLATING ON TAILS: TIN OR TIN/COPPER ALLOY OVER SILVER

PRIMARY COLOR FOR BI-COLOR
LEDS IN STANDARD ANODE/
CATHODE CONFIGURATION IS:
RED-GREEN= RED
RED-YELLOW= RED
GREEN-YELLOW= GREEN
GREEN-ORANGE= GREEN

LEGEND
BiC=BI-COLOR LED
LOWC=LOW CURRENT LED
YE=YELLOW
GR=GREEN
RD=RED
OR=ORANGE

NOTES:
1. THE TWO DIGITS PRECEDING THE
ADDITIONAL LED CODE MUST BE
USED IN THE PART NUMBER, WHEN
ORDERING ANY OF THE ADDITIONAL
LED OPTIONS.
2. '*' REPRESENT DIFFERENT OPTION OF
CONNECTOR, DETAIL OPTION PLEASE SEE
RELEVANT CONNECTOR DRAWING.

EXAMPLE:1

PART NUMBER RJSAE-***X-**
SEE NOTE 2
LED COLOR CODE

EXAMPLE:2

PART NUMBER RJSAE-***U-**-XX
SEE NOTE 2
SPECIAL CODE FOR TOP
& BOTTOM LEDS CONFIGURATION
BOTTOM ASSY LED (SAME AS STD CODE)
TOP ASSY LED (SAME AS STD CODE)
SEE NOTE 2

CODE	LED 2 (LEFT)	LED 1 (RIGHT)	CODE	LED 2 (LEFT)	LED 1 (RIGHT)	CODE	LED 2 (LEFT)	LED 1 (RIGHT)
0	BLOCKED	BLOCKED	9	GREEN	BLOCKED	J	BiC RD/GR	YELLOW
1	YELLOW	GREEN	A	BiC GR/YE	BiC GR/YE	K	YELLOW	BiC GR/OR
2	BLOCKED	GREEN	B	BiC RD/GR	BiC RD/GR	L	BiC GR/YE	RED
3	YELLOW	BLOCKED	C	BiC RD/GR	BiC GR/YE	M	RED	YELLOW
4	GREEN	YELLOW	D	GREEN	BiC GR/YE	N	BiC GR/RD	BiC GR/YE
5	GREEN	GREEN	E	YELLOW	BiC GR/YE	P	GREEN	BiC RD/GR
6	YELLOW	YELLOW	F	BiC GR/YE	YELLOW	R	BiC GR/OR	GREEN
7	RED	GREEN	G	BiC GR/OR	BiC GR/OR	T	RED	RED
8	GREEN	RED	H	BiC GR/YE	GREEN	V	BiC RD/GR	GREEN
			W	ADDITIONAL OPTIONS				
			U	SPECIAL CODE FOR TOP & BOTTOM LEDS CONFIGURATION				

EXAMPLE:3

PART NUMBER RJSAE-***W-**X
SEE NOTE 2
ADDITIONAL LED COLOR CODE
DENOTES ADDITIONAL LED OPTIONS TO BE USED

CODE	LED 2 (LEFT)	LED 1 (RIGHT)	CODE	LED 2 (LEFT)	LED 1 (RIGHT)	CODE	LED 2 (LEFT)	LED 1 (RIGHT)
0	DO NOT USE		5	BLOCKED	YELLOW	A	LOWC YE	LOWC YE
1	RED	BLOCKED	6	RED	BiC RD/GR	B	LOWC YE	LOWC GR
2	BiC GR/OR	YELLOW	7			C	LOWC GR	LOWC YE
3	YELLOW	RED	8	BiC RD/GR	BLOCKED	D	LOWC GR	LOWC GR
4	BLOCKED	RED	9	BiC GR/YE	BLOCKED	M	LOWC RD	LOWC YE

EXAMPLE:4

PART NUMBER RJSAE-***X-**XX*
SEE NOTE 2
LED COLOR CODE
THE SAME AS
EXAMPLE 1, 2, 3
LED COLOR CODE
THE SAME AS
EXAMPLE 1, 2, 3
SEE NOTE 2

DRAWN PAUL WANG	DATE 05/07/22	Amphenol Canada Corp.			
DESIGNED		TITLE LED OPTIONS FOR RJSAE, MULTI-PORT CONNECTORS - RoHS COMPLIANT			
CHECKED TERRY	05/07/22				
I. E. APPRD.					
Q. A. APPRD.					
DWG. APPRD.					
ENG. REL. NO.					
REF.					
DIMENSIONS ARE IN INCHES [mm]	CODE ID. NO. 03554	DWG	DRAWING NO. P-RJSAE-LEDS	REV. J	
		SCALE	WT. -----	SURF. -----	SHEET 1 OF 1

Mouser Electronics

Authorized Distributor

Click to View Pricing, Inventory, Delivery & Lifecycle Information:

[Amphenol:](#)

[RJSAE-5381-02](#)