

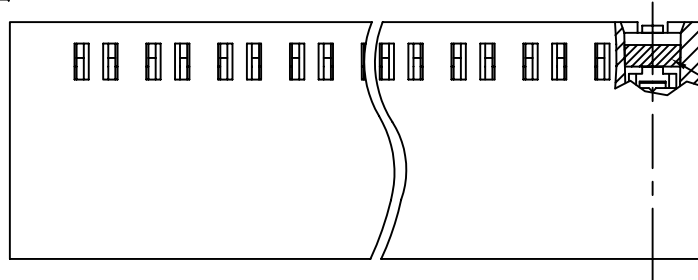


FCIconnect.com

Copyright FCI

PRODUCT NO

SEE TABLE

OPTIONAL
INSULATION
PLUG

LENGTH

 $B \pm .020$

0.51

 $A \pm .010$

0.25

 $.070$
1.78
REF.
TYP. $.100$ TYP.
2.54 $.046$
1.17
SQUARE
CONTACT
OPENING
TYP. $.100$
2.54 $.069$
1.75

90° REF. TYP.

PRINTED
CIRCUIT
BOARD $.029$
0.74
REF.
TYP.

WIDTH

 $.33$
8.4

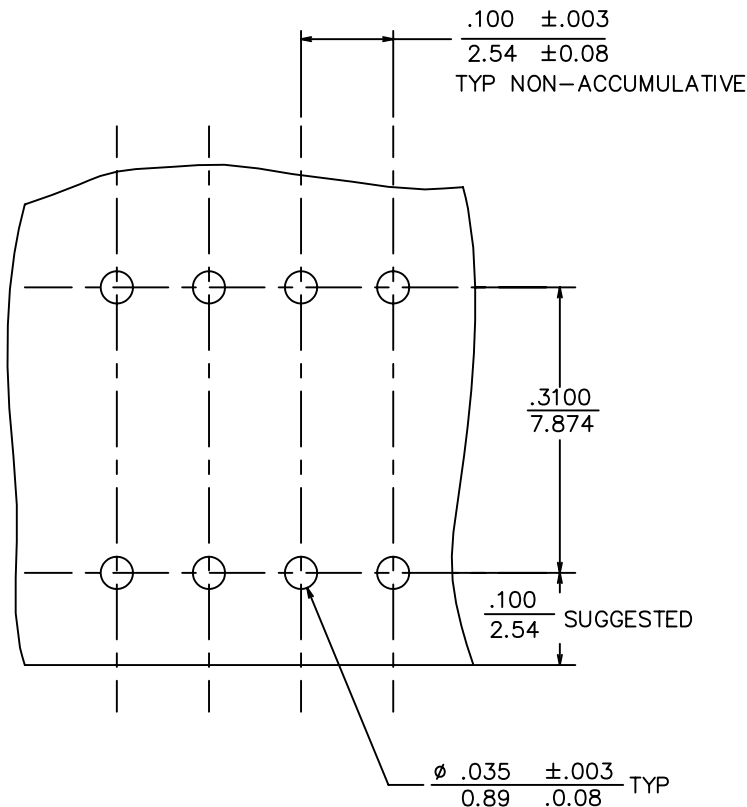
HEIGHT

 $.24$
6.1OPTIONAL
INSULATION
PLUG
SEE TABLE90°±5°
TYP $.115 \pm .010$
2.92 ±0.25
LEG LENGTH $.310$ REF.
7.87
AT BOTTOM OF HOUSING

mat'l. code				surface	tolerance	projection	product family		
-				ISO 1302 ✓	ISO 406 ISO 1101		CARD CONN		
ltr	ecn no	dr	date	tolerances unless otherwise specified			title		
P	ELX-N-14417	DCS	2013-02-05	angles	linear				
					$.XX \pm .01 / .XX \pm 0.3$	INCH/MM scale 4:1	2 x .100/2.54 HORIZ. CARD CONNECTOR		
					$.XXX \pm .005 / .XXX \pm 0.13$				
					$.XXXX \pm .0020 / .XXXX \pm 0.05$				
J	M05-018	MHT	8/20/05	0°±2°			dwg no sheet 1 of 6 size		
K	M06-0117	AEA	6/26/06	dr	B. ASHREF	10/12/81			
L	M07-0137	MHT	2/26/07	enr	D. NEIDICH	10/12/81			
M	M08-0232	MHT	8/14/08	chr	D. NEIDICH	10/12/81			
N	M09-0093	MHT	6/22/09	appd	D. NEIDICH	10/12/81			
sheet	revision	P	P	P	P	P	type Product Customer Drawing		
index	sheet	1	2	3	5	5			

PRODUCT NO

SEE TABLE

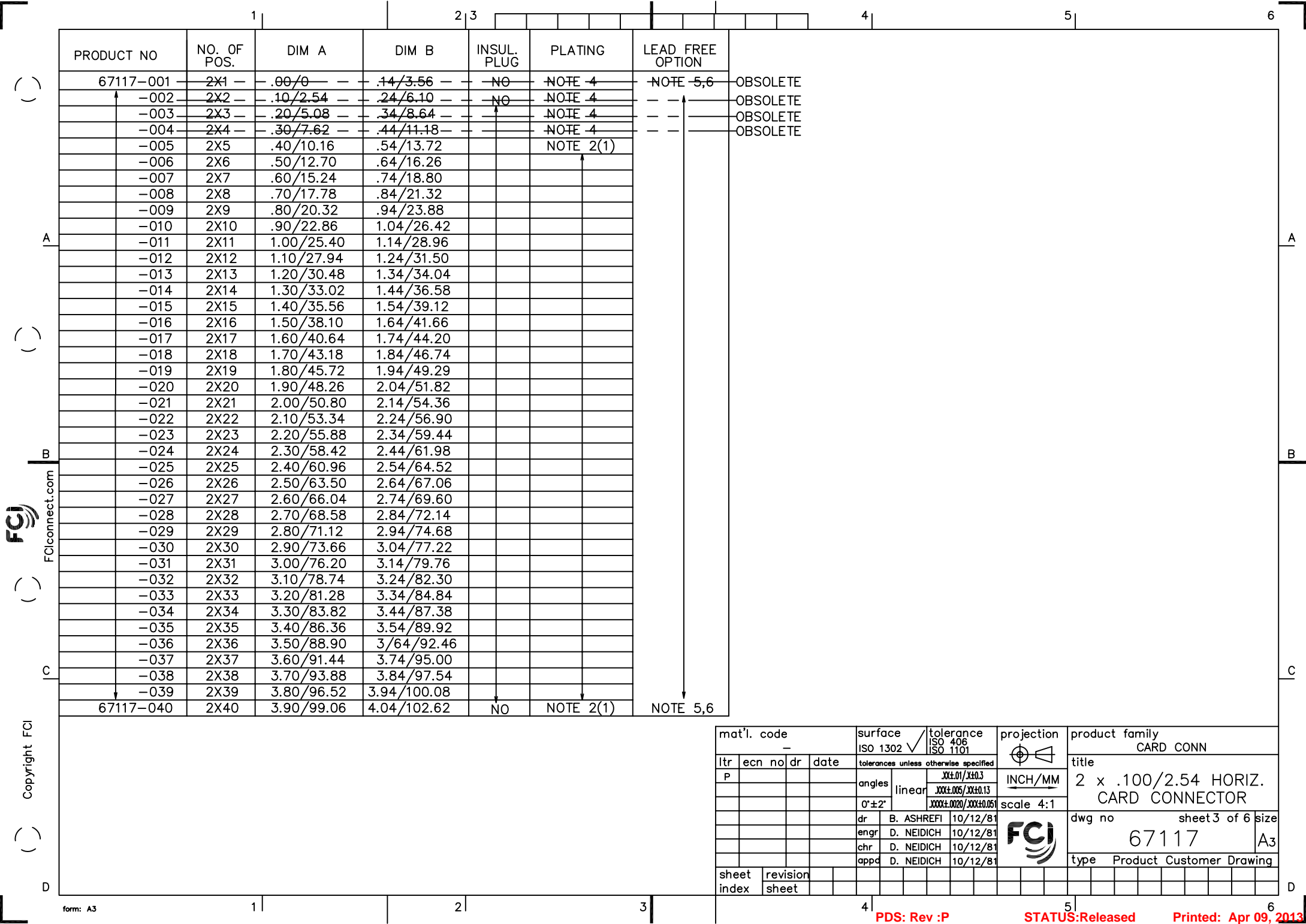
FIGURE 1
SCALE 5/1



- ⑤ ADD "LF" SUFFIX AT THE END OF PART NUMBER FOR LEAD FREE OPTION.
- ⑥ THESE PRODUCT MEETS EUROPEAN UNION DIRECTIVES AND OTHER COUNTRY REGULATIONS AS DESCRIBED IN GS-22-008
7. THIS PART WILL WITHSTAND EXPOSURE TO 260°C PEAK TEMPERATURE FOR 20 SECONDS IN A WAVE SOLDER, INFRA-RED OR VAPOR PHASE SOLDER PROCESS.
- ⑧ THIS PRODUCT HAS 100% TIN PLATING IN THE INTERFACE AND HAS NOT BEEN TESTED FOR WISKER GROWTH IN ALL INTERCONNECT REQUIREMENTS
9. PLATING OPTIONS:
MAY BE EITHER GOLD OR GXT PLATED AT MANUFACTURER'S OPTION.

NOTES.

1. HOUSING MATERIAL.
FILLED HIGH TEMPERATURE NYLON
COLOR: BLACK
2. TERMINAL MATERIAL.
BODY. BRASS .010/0.25 THICK.
SPRING. BE-CU. HEAT TREATED
- (1) BODY PLATING.
30 MICROINCH/0.76 MICRON GOLD OR GXT OVER
50 MICROINCH / 1.27 MICRON NICKEL ON CONTACT AREA
SOLDERTAIL PLATING: .100 MICROINCH/2.54 MICRON PURE TIN (NOTE 8)
OVER 50 MICROINCH/1.27 MICRON NICKEL.
SPRING PLATING. GOLD FLASH
- (2) BODY PLATING.
30 MICROINCH/0.76 MICRON GOLD OVER
50 MICROINCH/1.27 MICRON NICKEL ON CONTACT AREA
SOLDERTAIL PLATING: GOLD FLASH
SPRING PLATING: GOLD FLASH
3. APPLICATION INFORMATION.
A. RECOMMENDED MOUNTING HOLE PATTERN IS SHOWN IN FIG."1".
B. ALL MATING PINS TO BE .025/0.64 SQUARE ON TRUE CENTER OF GIVEN TERMINAL SPACINGS WITHIN .015/0.38 DIA.
C. SUGGESTED MATING PIN LENGTH .350±.020 / 8.89±0.51
4. TERMINAL MATERIAL.
BODY. BRASS .010/0.25 THICK.
SPRING. BE-CU. HEAT TREATED
BODY PLATING.
30 MICROINCH / 0.76 MICRON GOLD OVER
50 MICROINCH/ 1.27 MICRON NICKEL
IN CONTACT AREA
SOLDERTAIL PLATING: 3 MICROINCH /0.076 MICRON GOLD OVER 50 MICROINCH/ 1.27 MICRON NICKEL.
SPRING PLATING. GOLD FLASH

mat'l. code				surface	tolerance	projection	product family
-				ISO 1302	ISO 406 ISO 1101	INCH/MM	CARD CONN
ltr	ecn	no	dr	tolerances unless otherwise specified		INCH/MM scale 4:1	title
P				angles	linear		2 x .100/2.54 HORIZ. CARD CONNECTOR
				0°±2°	.001±.001/.001±.001 .001±.005/.001±.001 .001±.0020/.001±.001		dwg no
				dr	B. ASHREFF		sheet 2 of 6 size
				enrg	D. NEIDICH	FCI	67117 A3
				chr	D. NEIDICH		type
				appd	D. NEIDICH		Product Customer Drawing
sheet	revision						
index	sheet						



mat'l. code —					surface ISO 1302 ✓		tolerance ISO 406 ISO 1101		projection 		product family CARD CONN			
ltr	ecn	no	dr	date	tolerances unless otherwise specified							title		
P					angles	linear	.XX±.01/.XX±0.3		INCH/MM	2 x .100/2.54 HORIZ. CARD CONNECTOR				
				.XXX±.005/.XXX±0.13										
				.XXX±.0020/.XXX±0.051										
					0°±2°		.XXX±.0020/.XXX±0.051		scale 4:1					
					dr	B. ASHREFI	10/12/81			dwg no		sheet 3 of 6	size	
					engr	D. NEIDICH	10/12/81			67117		A3		
					chr	D. NEIDICH	10/12/81							
					appd	D. NEIDICH	10/12/81							
sheet index		revision								type Product Customer Drawing				
		sheet												




NOTE 5,6

FCIconnect.com

D

10

PRODUCT NO	NO. OF POS.	DIM A	DIM B	INSUL. PLUG		LEAD FREE OPTION
67117-501	2X1	.00/0	.14/3.56	YES		NOTE 5,6
-502	2X2	.10/2.54	.24/6.10		NOTE 4	
-503	2X3	.20/5.08	.34/8.64		NOTE 4	
-504	2X4	.30/7.62	.44/11.18		NOTE 4	
-505	2X5	.40/10.16	.54/13.72		NOTE 2(1)	
-506	2X6	.60/12.70	.64/16.26			
-507	2X7	.60/15.24	.74/18.80			
-508	2X8	.70/17.78	.84/21.34			
-509	2X9	.80/20.32	.94/23.88			
-510	2X10	.90/22.86	1.04/26.42			
-511	2X11	1.00/25.40	1.14/28.96			
-512	2X12	1.10/27.94	1.24/31.50			
-513	2X13	1.20/30.48	1.34/34.04			
-514	2X14	1.30/33.02	1.44/36.58			
-515	2X15	1.40/35.56	1.54/39.12			
-516	2X16	1.50/38.10	1.64/41.66			
-517	2X17	1.60/40.64	1.74/44.20			
-518	2X18	1.70/43.18	1.84/46.74			
-519	2X19	1.80/45.72	1.94/49.28			
-520	2X20	1.90/48.26	2.04/51.82			
-521	2X21	2.00/50.80	2.14/54.36			
-522	2X22	2.10/53.34	2.24/56.90			
-523	2X23	2.20/55.88	2.34/59.44			
-524	2X24	2.30/58.42	2.44/61.98			
-525	2X25	2.40/60.96	2.54/64.52			
-526	2X26	2.50/63.50	2.64/67.06			
-527	2X27	2.60/66.04	2.74/69.60			
-528	2X28	2.70/68.58	2.84/72.14			
-529	2X29	2.80/71.12	2.94/74.68			
-530	2X30	2.90/73.66	3.04/77.22			
-531	2X31	3.00/76.20	3.14/79.76			
-532	2X32	3.10/78.74	3.24/82.30			
-533	2X33	3.20/81.28	3.34/84.84			
-534	2X34	3.30/83.82	3.44/87.38			
-535	2X35	3.40/86.36	3.54/89.92			
-536	2X36	3.50/88.90	3.64/92.46			
-537	2X37	3.60/91.44	3.74/95.00			
-538	2X38	3.70/93.98	3.84/97.54			
-539	2X39	3.80/96.52	3.94/100.08			
67117-540	2X40	3.90/99.06	4.04/102.62	YES	NOTE 2(1)	NOTE 5,6

mat'l. code -					surface ISO 1302 ✓		tolerance ISO 406 ISO 1101		projection 		product family CARD CONN											
ltr ecn no dr date					tolerances unless otherwise specified						 INCH/MM scale 4:1		title 2 x .100/2.54 HORIZ. CARD CONNECTOR									
P					angles linear		XXX±.01/X±0.3 XXX±.005/X±0.13 XXXX±.0020/XXX±0.05															
					0'±2'								dwg no		sheet5 of 6 size							
					dr		B. ASHREFI		10/12/81				67117		A3							
					engr		D. NEIDICH		10/12/81													
					chr		D. NEIDICH		10/12/81													
					appd		D. NEIDICH		10/12/81				type		Product Customer Drawing							
sheet index		revision sheet																				



FCIconnect.com

Copyright FCI

form: A3

1

2

3

4

5

6

PDS: Rev :P

STATUS:Released

Printed: Apr 09, 2013

PRODUCT NO	NO. OF POS.	DIM A	DIM B	INSUL. PLUG	PLATING	LEAD FREE OPTION
67117-541	2X41	4.00/101.60	4.14/105.16	YES	NOTE 2(1)	NOTE 5,6
-542	2X42	4.10/104.14	4.24/107.70			
-543	2X43	4.20/106.68	4.34/110.24			
-544	2X44	4.30/109.22	4.44/112.78			
-545	2X45	4.40/111.76	4.54/115.32			
-546	2X46	4.50/114.30	4.64/117.86			
-547	2X47	4.60/116.84	4.74/120.40			
-548	2X48	4.70/119.38	4.84/122.94			
-549	2X49	4.80/121.92	4.94/125.48			
-550	2X50	4.90/124.46	5.04/128.02			
-551	2X51	5.00/127.00	5.14/130.56			
-552	2X52	5.10/129.54	5.24/133.10			
-553	2X53	5.20/132.08	5.34/135.64			
-554	2X54	5.30/134.62	5.44/138.18			
-555	2X55	5.40/137.16	5.54/140.72			
-556	2X56	5.50/139.70	5.64/143.26			
-557	2X57	5.60/142.24	5.74/145.80			
-558	2X58	5.70/144.78	5.84/148.34			
-559	2X59	5.80/147.32	5.94/150.88			
-560	2X60	5.90/149.86	6.04/153.42			
-561	2X61	6.00/152.40	6.14/155.96			
-562	2X62	6.10/154.94	6.24/158.50			
-563	2X63	6.20/157.48	6.34/161.04			
-564	2X64	6.30/160.02	6.44/163.58			
67117-565	2X65	6.40/162.56	6.54/166.12	YES	NOTE 2(1)	NOTE 5,6
67117-265	2X65	6.40/162.56	6.54/166.12	YES	NOTE 2(2)	

mat'l. code				surface	tolerance	projection	product family	
-				ISO 1302 ✓	ISO 406 ISO 1101		CARD CONN	
ltr	ecn	no	dr	date	tolerances unless otherwise specified		title	
P					angles	INCH/MM	2 x .100/2.54 HORIZ.	
					linear	scale 4:1	CARD CONNECTOR	
					0'±2'			
					dr		dwg no	sheet 6 of 6 size
					enr		67117	A3
					chr		type Product Customer Drawing	
					appd			
sheet index	revision sheet							

Mouser Electronics

Authorized Distributor

Click to View Pricing, Inventory, Delivery & Lifecycle Information:

[FCI / Amphenol:](#)

[67117-025](#) [67117-032](#) [67117-040](#) [67117-565](#) [67117-025LF](#) [67117-032LF](#) [67117-040LF](#) [67117-565LF](#) [67117-265](#)
[67117-132](#)