

Economic and Reliable Connections

1 Kit per Packaging -
Easy Choice for You!

Specifications

VDE 0110 Standard concerning
clearance and creepage
distances

VDE 0627 Connectors

Standards

UL, CSA, SEV for inserts and housings



Certified according to DIN EN ISO 9001
in design/ development, production,
installation and service.

Termination

- Screw terminal

Inserts

- Leading protective ground
- Polarized for correct mating
- Interchangeability of male & female
inserts in hoods and housings

Housings

- Electrical connection
with protective ground
- High mechanical strength and
vibration resistance
ensured by locking levers.

Accessories

- Cable glands are not included in
the standard kit and must be
ordered separately.

General Remarks

It is the user's responsibility to check
whether the components belonging
to these kits comply with different
regulations from those stated in
special fields of application which we
are unable to foresee.

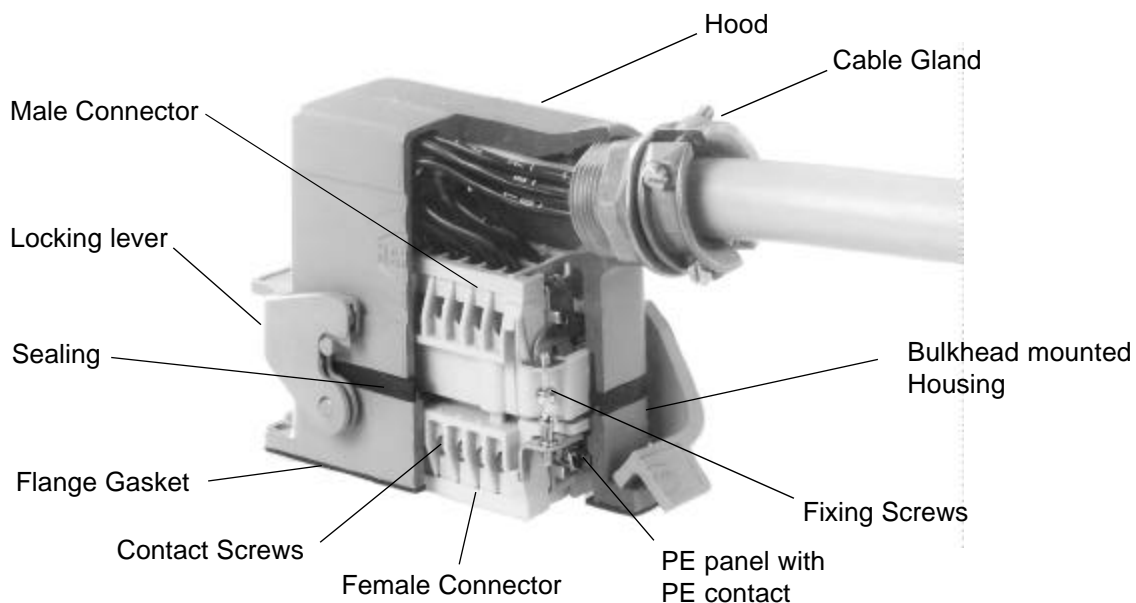
We reserve the right to modify
designs in order to improve quality,
keep pace with technological
advancement or meet particular
requirements in production.
This information leaflet must not be
used in any from or manner without
our prior approval in writing
(Copyright Law, Fair Trading Law,
Civil Code).

We are bound by the German
version only.

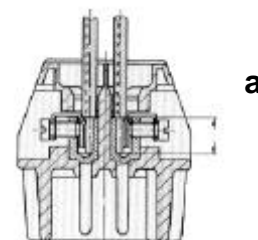
Note

Connectors should not be connected and disconnected under electrical load. Connectors are electrical components which should be installed by properly trained personnel only!
Connectors of the same or different series that are mounted in a side-by-side configuration may be protected against incorrect mating through the use of coding pins and bushings.

Han-Kit® 16 B



Screw terminal

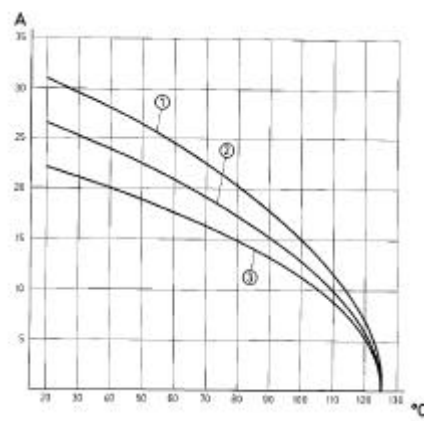


Inserts	Max. Wire Gauge (mm²)	AWG	Stripping Length a (mm)	Sheath Length x (mm)
Han 3A.... + 4A....	2.5	14	4.5	40 mm
Han 10 A	2.5	14	7	85 mm
Han 16 A	2.5	14	7	100 mm
Han 6 B	2.5	14	7	70 mm
Han 10 B	2.5	14	7	90 mm
Han 16 B	2.5	14	7	110 mm
Han 24 B	2.5	14	7	130 mm

Derating Diagrams

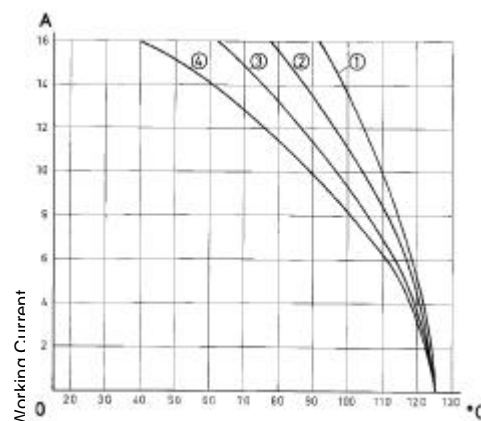
The current carrying capacity is limited by maximum temperature of materials for inserts and contacts including terminals. The current capacity-curve is valid for continuous, not interrupted current-loaded contacts of connectors when simultaneous power on all contacts is given, without exceeding the maximum temperature according to DIN IEC 512-3.

Wire gauge: 2.5 mm² = AWG 14



Ambient Temperature

1 = Han 3 A / 4 A
2 = Han 10 A
3 = Han 16 A



Ambient Temperature

1 = Han 6 B
2 = Han 10 B
3 = Han 16 B
4 = Han 24 B

Recommended Tightening Torques and Screw Driver Blades

Size of screw	Type of connector	Tightening torque [Nm]	Tightening torque [In-lbf]	Recomm. Screw drive size (mm)
M3	Screw Contact Han 3A.../4A...	0.5	4.4	0.5 x 3.5
M3	Screw Contact Han 10+16A + 6-24B	0.5	4.4	0.5 x 3.5
M3.5	PE-Contact Han 10+16A	1.2	10.6	0.5 x 3.5
M4	PE-Contact Han 6-24B	1.2	10.6	0.5 x 3.5

Han-Kit®-10A

Part Number: 10 20 010 0000



Hood: Han 10 A
Material: Die cast light alloy
Degree of protection: IP 65
Cable entry protection: Pg 16

Male insert: Han 10 A/10 poles +
Screw termination: up to 2.5 mm²
Working voltage: 600V UL/CSA
Working current: 16 A

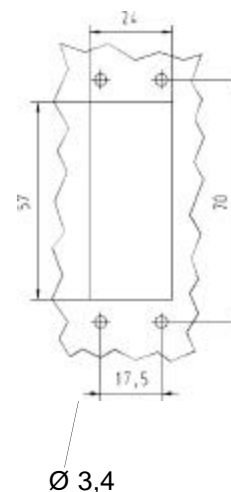
Female insert: Han 10 A/10 poles +
Screw termination: up to 2.5 mm²
Working voltage: 600V UL/CSA
Working current: 16 A

Housing
bulkhead mounting: Han 10 A
Material: Die cast light alloy

Flange gasket

Degree of protection according to IEC 529 / EN 60529
in locked position: IP 65

**Panel cut out
57 x 24 mm**



Han-Kit®-16A

Part Number: 10 20 016 0000



Hood: Han 16 A
Material: Die cast light alloy
Degree of protection: IP 65
Cable entry protection: Pg 16

Male insert: Han 16A/16 poles +
Screw termination: up to 2.5 mm²
Working voltage: 600V UL/CSA
Working current: 16 A

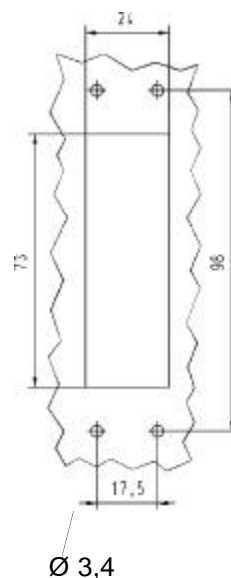
Female insert: Han 16 A/16 poles +
Screw termination: up to 2.5 mm²
Working voltage: 600V UL/CSA
Working current: 16 A

Housing
bulkhead mounting: Han 16 A
Material: Die cast light alloy

Flange gasket

Degree of protection according to IEC 529 / EN 60529
in locked position: IP 65

**Panel cut out
73 x 24 mm**



Mouser Electronics

Authorized Distributor

Click to View Pricing, Inventory, Delivery & Lifecycle Information:

HARTING:

10200160000