

THIS DRAWING IS UNPUBLISHED

RELEASED FOR PUBLICATION

© COPYRIGHT

 $\Theta_f =$ 

ALL RIGHTS RESERVED

LOC	
AD	

	DIST
	00

	DIST
	00

108

LIR

REVISIONS

DESCRIPTION

D&amp;T

NAME
------

APV

P2

RD4

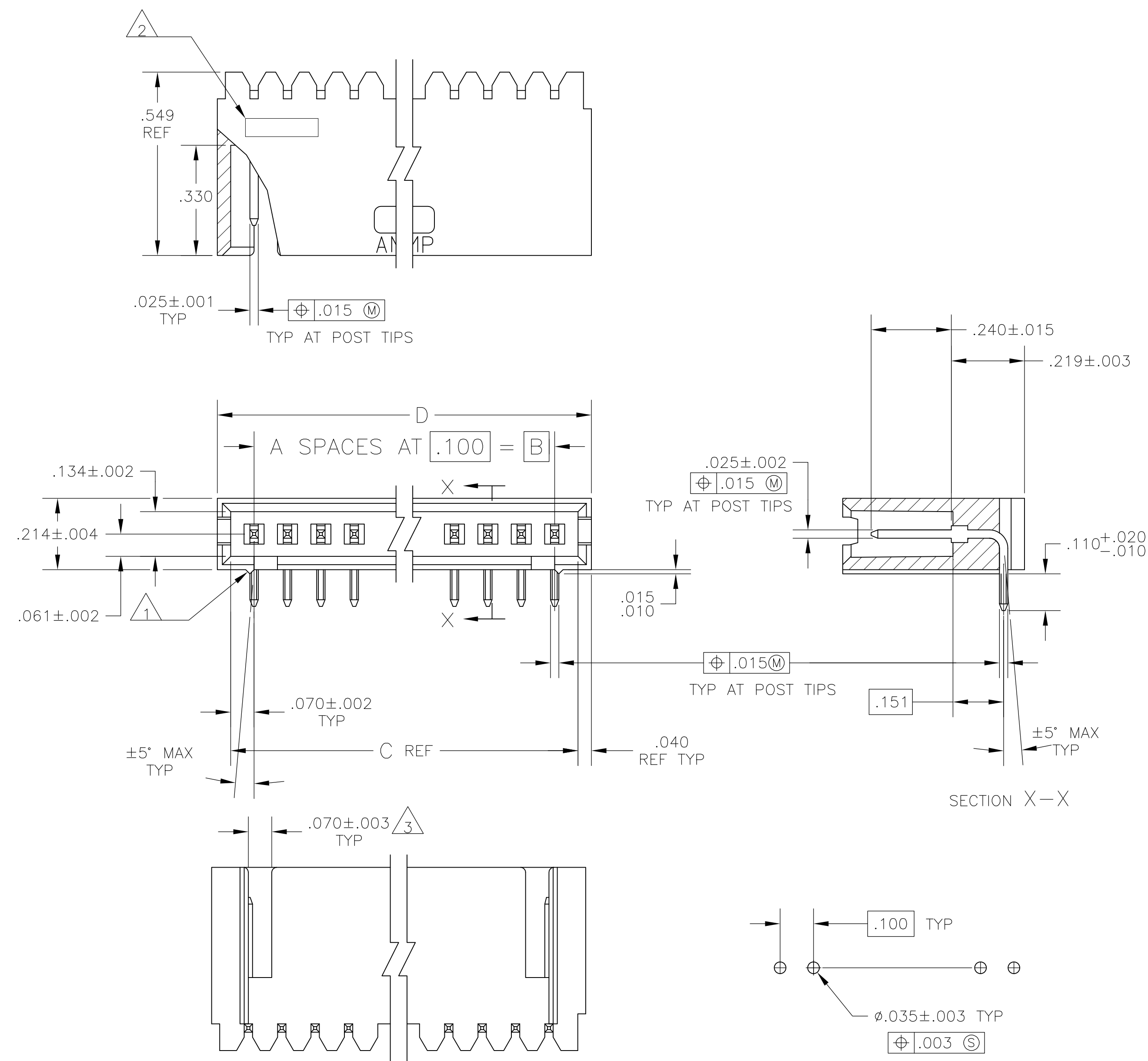
## REFERENCES

R E C O - 11 - 00459

118A

RK

HM



## RECOMMENDED HOLE LAYOUT

1 STANDOFFS:

3 THRU 9 POSN - (2 REQD) ON OUTSIDE ENDS OF HOUSING

10 THRU 18 POSN - (3 REQD) TWO ON OUTSIDE ENDS AND  
ONE CENTERED ON HOUSING

19 POSN AND LARGER - (4 REQD) TWO ON OUTSIDE ENDS  
AND TWO EVENLY SPACED WITHIN  
REMAINING LENGTH OF HOUSING

 RECESSED DATE CODE

 FOR 3 POSITION ONLY, ONE SLOT .215 WIDE.

4 .000100—.000200 BRIGHT TIN—LEAD OVER .000050 NICKEL.

5 .000100-.000200 BRIGHT TIN OVER .000050 NICKEL.




6 PRELIMINARY PART

 .000100—.000200 MATTE TIN OVER .000050 NICKEL.

8 MATERIAL:  
HOUSING: FLAME RETARDANT THERMOPLASTIC, COLOR: BLACK  
POSTS: PHOS BRONZE

9 OBSOLETE PARTS: OBSOLETE CIS STREAMLINING PER D.RENAUD/D.SINISI

9	OBSOLETE	7	2.620	2.540	2.400	24	25	7-102523-3	
		7	2.520	2.440	2.300	23	24	7-102523-2	
		7	2.420	2.340	2.200	22	23	7-102523-1	
		7	2.320	2.240	2.100	21	22	7-102523-0	
		7	2.220	2.140	2.000	20	21	6-102523-9	
		7	2.120	2.040	1.900	19	20	6-102523-8	
		7	2.020	1.940	1.800	18	19	6-102523-7	
		7	1.920	1.840	1.700	17	18	6-102523-6	
9	OBSOLETE	7	1.820	1.740	1.600	16	17	6-102523-5	
		7	1.720	1.640	1.500	15	16	6-102523-4	
9	OBSOLETE	7	1.620	1.540	1.400	14	15	6-102523-3	
		7	1.520	1.440	1.300	13	14	6-102523-2	
9	OBSOLETE	7	1.420	1.340	1.200	12	13	6-102523-1	
		7	1.320	1.240	1.100	11	12	6-102523-0	
9	OBSOLETE	7	1.220	1.140	1.000	10	11	5-102523-9	
		7	1.120	1.040	.900	9	10	5-102523-8	
9	OBSOLETE	7	1.020	.940	.800	8	9	5-102523-7	
		7	.920	.840	.700	7	8	5-102523-6	
		7	.820	.740	.600	6	7	5-102523-5	
		7	.720	.640	.500	5	6	5-102523-4	
		7	.620	.540	.400	4	5	5-102523-3	
		7	.420	.340	.200	2	3	5-102523-2	
		7	.520	.440	.300	3	4	5-102523-1	
		5	1.120	1.040	.900	9	10	3-102523-7	
		5	.920	.840	.700	7	8	3-102523-6	
		5	.520	.440	.300	3	4	3-102523-5	
6		4	3.720	3.640	3.500	35	36	3-102523-4	
		4	3.620	3.540	3.400	34	35	3-102523-3	
OBSOLETE		4	3.520	3.440	3.300	33	34	3-102523-2	
OBSOLETE		4	3.420	3.340	3.200	32	33	3-102523-1	
OBSOLETE		4	3.320	3.240	3.100	31	32	3-102523-0	
OBSOLETE		4	3.220	3.140	3.000	30	31	2-102523-9	
OBSOLETE		4	3.120	3.040	2.900	29	30	2-102523-8	
OBSOLETE		4	3.020	2.940	2.800	28	29	2-102523-7	
OBSOLETE		4	2.920	2.840	2.700	27	28	2-102523-6	
OBSOLETE		4	2.820	2.740	2.600	26	27	2-102523-5	
OBSOLETE		4	2.720	2.640	2.500	25	26	2-102523-4	
	OBSOLETE	4	2.620	2.540	2.400	24	25	2-102523-3	
		4	2.520	2.440	2.300	23	24	2-102523-2	
		4	2.420	2.340	2.200	22	23	2-102523-1	
		4	2.320	2.240	2.100	21	22	2-102523-0	
		4	2.220	2.140	2.000	20	21	1-102523-9	
		4	2.120	2.040	1.900	19	20	1-102523-8	
		4	2.020	1.940	1.800	18	19	1-102523-7	
		4	1.920	1.840	1.700	17	18	1-102523-6	
6-102523-4		4	1.820	1.740	1.600	16	17	1-102523-5	
		4	1.720	1.640	1.500	15	16	1-102523-4	
9	OBSOLETE	4	1.620	1.540	1.400	14	15	1-102523-3	
		4	1.520	1.440	1.300	13	14	1-102523-2	
9	OBSOLETE	4	1.420	1.340	1.200	12	13	1-102523-1	
		4	1.320	1.240	1.100	11	12	1-102523-0	
9	OBSOLETE	4	1.220	1.140	1.000	10	11	1-102523-9	
		4	1.120	1.040	.900	9	10	102523-8	
9	OBSOLETE	4	1.020	.940	.800	8	9	1-102523-7	
		4	.920	.840	.700	7	8	102523-6	
		4	.820	.740	.600	6	7	102523-5	
		4	.720	.640	.500	5	6	102523-4	
		4	.620	.540	.400	4	5	102523-3	
		4	.420	.340	.200	2	3	102523-2	
		4	.520	.440	.300	3	4	102523-1	
		FINISH		D	C	B	A	NO. OF POSN	PART NO.

THIS DRAWING IS A CONTROLLED DOCUMENT.		DIN S.A.SHUEY CHK H.MOLL 30CT89		 TE Connectivity	
DIMENSIONS: INCHES		APVD R.ELICKER PRODUCT SPEC — APPLICATION SPEC —			
TOLERANCES UNLESS OTHERWISE SPECIFIED:  0 PLC ± — 1 PLC ± — 2 PLC ± — 3 PLC ± .005 4 PLC ± — ANGLES ± —				SIZE A1	
MATERIAL		FINISH		WEIGHT —  CUSTOMER DRAWING	
		SEE TABLE		SCALE 4:1 SHEET 1 OF 1 REV R2	

# Mouser Electronics

Authorized Distributor

Click to View Pricing, Inventory, Delivery & Lifecycle Information:

[TE Connectivity:](#)

[102523-2](#)