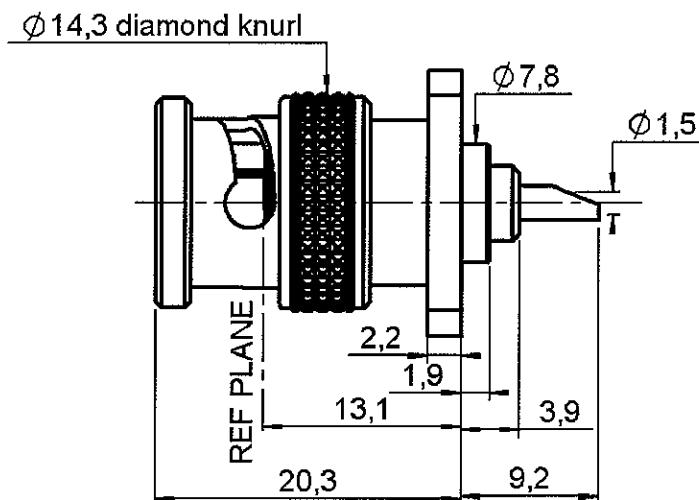
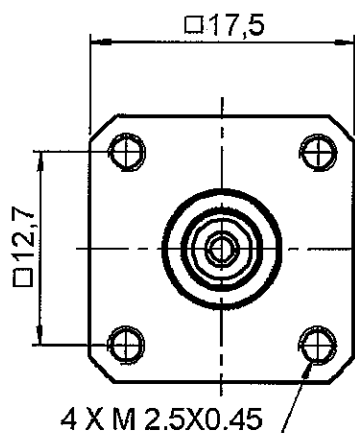
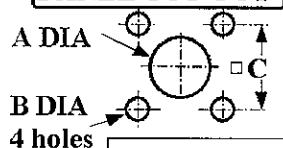


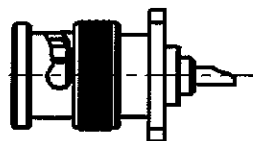
**SQUARE FLANGE PLUG RECEPTACLE**  
**MILLED HOLES WITH SOLDER POT CONTACT**

**R141.440.000**

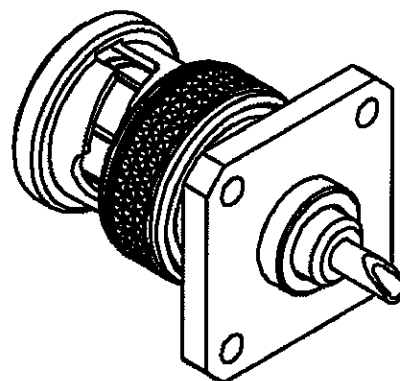
Series : BNC

**PANEL CUT OUT**

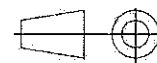
	mm	
	Maxi	mini
A	7.9	7.8
B	2.7	2.6
C	12.75	12.65



Scale 1/1



All dimensions are in mm.



COMPONENTS	MATERIALS	PLATING ( $\mu\text{m}$ )
BODY	BRASS	NICKEL 2
CENTER CONTACT	BRASS	GOLD 0.5 OVER NICKEL 2
OUTER CONTACT	-	-
INSULATOR	PTFE	-
GASKET	SILICONE RUBBER	-
OTHERS PARTS	BRASS	NICKEL 2
-	-	-
-	-	-

Issue : 0619 B

In the effort to improve our products, we reserve the right to make changes judged to be necessary.

**RADIALL®**

**SQUARE FLANGE PLUG RECEPTACLE**  
**MILLED HOLES WITH SOLDER POT CONTACT**

**R141.440.000**

Series : BNC

**PACKAGING**

Standard	Unit	Other
100	'W' option	Contact us

**SPECIFICATION****ELECTRICAL CHARACTERISTICS**

Impedance	50	$\Omega$
Frequency	0-4	GHz
VSWR	1.06 + 0.0060	x F(GHz) Maxi
Insertion loss	.025*	$\sqrt{F}$ (GHz) dB Maxi
RF leakage	- ( 57	- F(GHz)) dB Maxi
Voltage rating	500	Veff Maxi
Dielectric withstanding voltage	1500	Veff mini
Insulation resistance	5000	M $\Omega$ mini

**ENVIRONMENTAL**

Operating temperature	-65/+165	$^{\circ}$ C
Hermetic seal	NA	Atm.cm3/s
Panel leakage	NA	

**OTHER CHARACTERISTICS**

Assembly instruction NA

Others :

\* Coaxial Transmission Line Only

**MECHANICAL CHARACTERISTICS**

Center contact retention	
Axial force – Mating end	18 N mini
Axial force – Opposite end	18 N mini
Torque	2.8 N.cm mini

## Recommended torque

Mating	NA N.cm
Panel nut	NA N.cm

Mating life	500 Cycles mini
Weight	12,000 g

Issue : 0619 B

In the effort to improve our products, we reserve the right to make changes judged to be necessary.

**RADIALL®**

# Mouser Electronics

Authorized Distributor

Click to View Pricing, Inventory, Delivery & Lifecycle Information:

Radial:

[R141440000](#) [R141440000W](#)