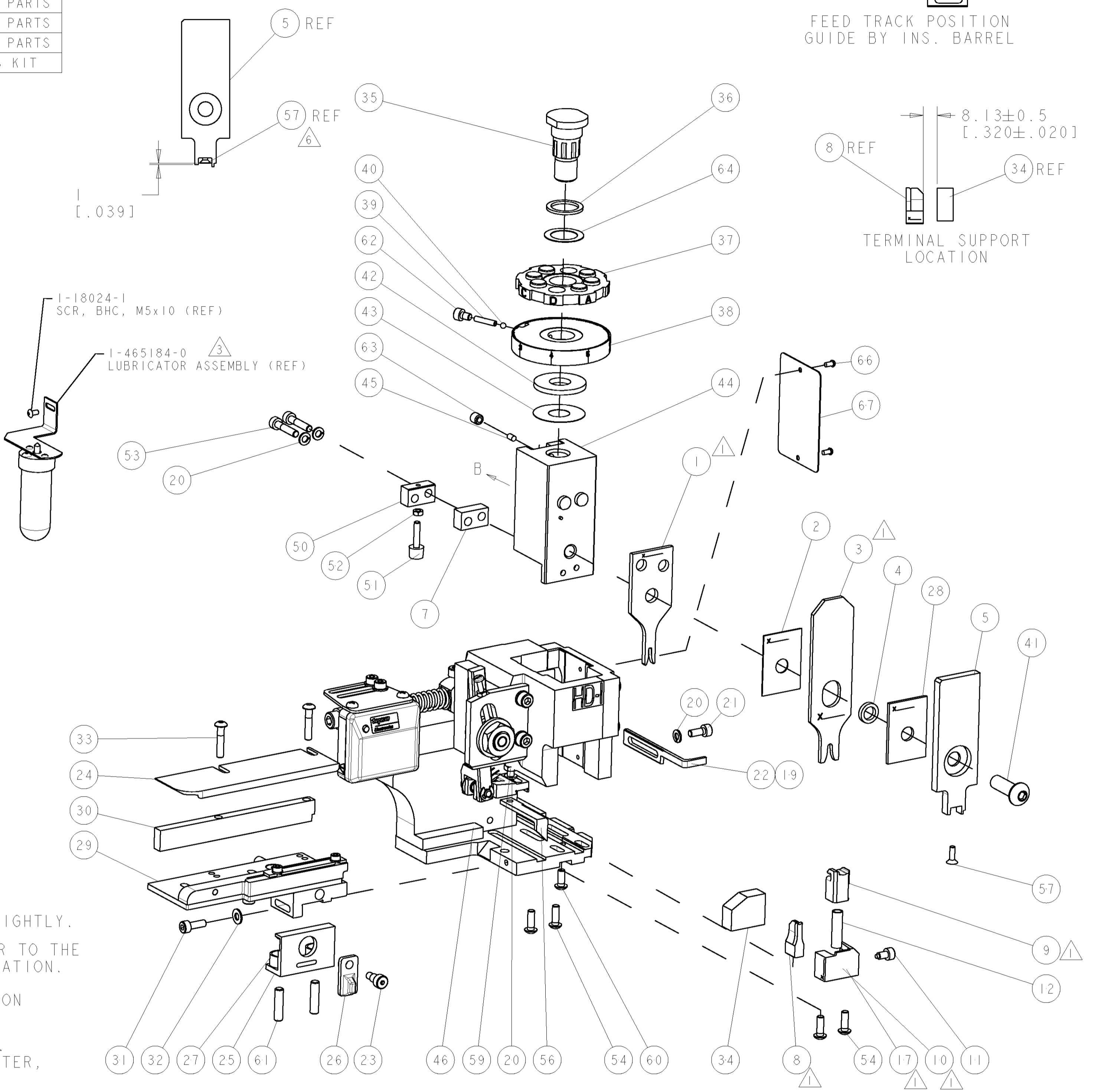
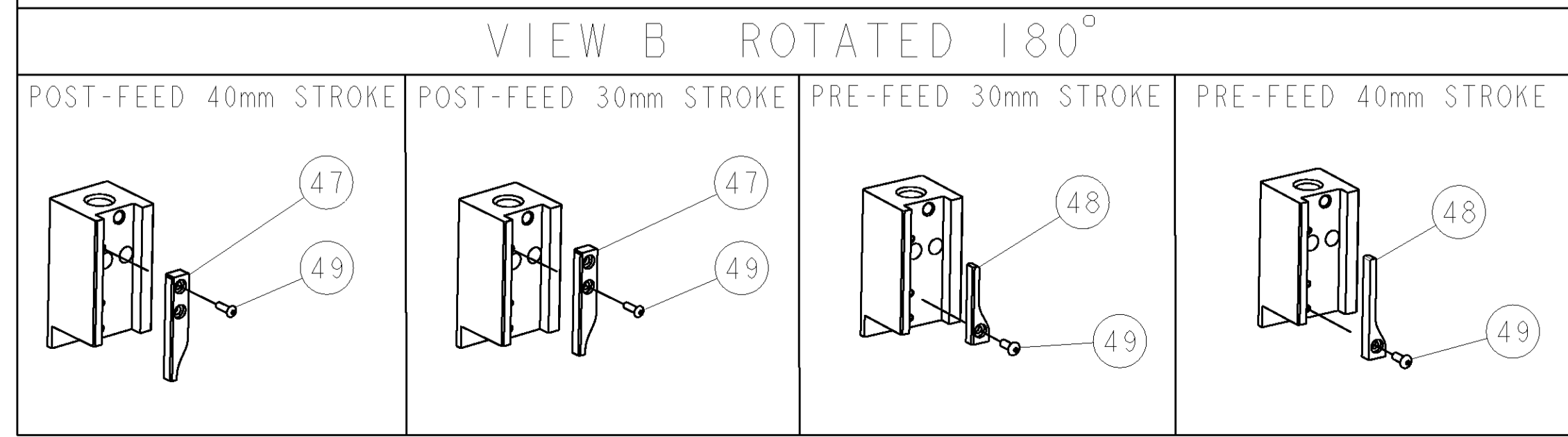


PART NUMBER	REV	TERMINATOR	FEED TYPE	DESCRIPTION
1426455-1	A	LEADMAKER	MECH POST FEED	CUTS CARRIER
1426455-2	A	BENCH	MECH PRE FEED	CUTS CARRIER
1426455-6	A	LEADMAKER	MECH POST FEED	CONTINUOUS CARRIER
7-1426455-1	A	LEADMAKER	MECH POST FEED	-1 AND SPARE PARTS
7-1426455-2	A	BENCH	MECH PRE FEED	-2 AND SPARE PARTS
7-1426455-6	A	LEADMAKER	MECH POST FEED	-6 AND SPARE PARTS
7-1426455-7	A	-	-	SPARE PARTS KIT

CRIMP DATA		TE TERMINAL	TE CRIMP SPECS
TERMINAL NAME: .060 SERIES RECEPTACLE CONTACT			
CRIMP	SIZE	TYPE	RANGE
WIRE	1.78 [.070 IN]	F	0.30-0.85mm ² or 22-18 AWG
INSUL	3.30 [1.130 IN]	O	1.40-2.00 [1.055-.079 IN]
WIRE STRIP LENGTH		APPL INSTRUCTIONS	
4.00-4.50 [1.157-.177 IN]		408-8322	
TERMINAL APPL SPEC		FEED	
114-5216		15.00 [.591 IN]	
TERMINALS APPLIED			
TERMINAL	SEAL		
900293	967067-1		
-	316867-1		
WIRE SIZE			
CRIMP HEIGHT	PINPN & LENGTH [IN]		
0.85mm ² or 18AWG	1.17 ± 0.05 [.046 ± .002 IN]	2-354779-8 [.3130]	
0.50mm ² or 20AWG	1.03 ± 0.05 [.041 ± .002 IN]	3-354779-9 [.3185]	
0.30mm ² or 22AWG	0.94 ± 0.05 [.037 ± .002 IN]	4-354779-7 [.3225]	

- △ RECOMMENDED SPARE PARTS.
- GREASE RAM, CAM, CAM FOLLOWER AND FEED ROD LIGHTLY.
 - CERTAIN TERMINALS REQUIRE LUBRICATION. REFER TO THE APPLICATOR INSTRUCTION SHEET FOR MORE INFORMATION.
 - LUBRICATE DAILY PER THE APPLICATOR INSTRUCTION SHEET SUPPLIED WITH THE APPLICATOR.
 - THIS APPLICATOR APPLIES TERMINAL WITH A SEAL. SEAL USED IS DEPENDENT UPON INSULATION DIAMETER, REFER TO RELEVANT APPLICATION SPECIFICATION.
 - APPLY TORQ-SEAL IN ALLEN SOCKET TO FILL HOLE AFTER FLAT HD HAS BEEN ADJUSTED TO CORRECT HEIGHT AT QUALIFICATION. APPLY #1-23419-5 LOC-TITE TO THREADS.



SET UP GAGE
458637-3

REVISIONS						
LOC	DIST	REV	DESCRIPTION	DATE	OWN	APVD
A	66	1	SEE ECO-08-019595	08AUG2008	LJL	MC

PART NO										DESCRIPTION	ITEM NO	
-	-	-	-	-	-	-	-	-	-	-	73	
-	-	-	-	-	-	-	-	-	-	-	72	
-	1	1	1	1	1	1	1	1	1	1338705-1	DOCUMENTATION PACKAGE	71
-	-	-	-	-	-	-	-	-	-	-	70	
-	-	-	-	-	-	-	-	-	-	-	69	
-	-	-	-	-	-	-	-	-	-	-	68	
-	1	1	1	1	1	1	1	1	1	461264-1	PLATE, IDENTIFICATION	67
-	2	2	2	2	2	2	2	2	2	21017-2	SCREW, DRIVE	66
-	-	-	-	-	-	-	-	-	-	-	65	
-	1	1	1	1	1	1	1	1	1	986950-1	WASHER, FLAT PRECISION	64
-	1	1	1	1	1	1	1	1	1	3-18031-0	SCR, SET, CUP POINT M6 X 6.0	63
-	1	1	1	1	1	1	1	1	1	18023-9	SCR, SKT HD CAP M4 X 6.0	62
-	2	2	2	2	2	2	2	2	2	2-18032-5	SCR, SET, FLT POINT M5 X 20.0	61
-	1	1	1	1	1	1	1	1	1	18024-7	SCR, BTN SKT HD CAP (M4 X 10.0)	60
-	-	-	-	-	-	-	-	-	-	-	59	
-	1	1	1	1	1	1	1	1	1	5-18022-2	SCR, HEX HD CAP M4 X 8.0	58
-	-	-	-	-	-	-	-	-	-	-	57	
-	1	1	1	1	1	1	1	1	1	985575-3	SCR, FLT SKT HD CAP M3 X 10.0	56
-	1	1	1	1	1	1	1	1	1	1338685-1	PAWL, FEED	55
-	-	-	-	-	-	-	-	-	-	-	54	
-	4	4	4	4	4	4	4	4	4	18024-8	SCR, BTN SKT HD CAP (M4 X 12.0)	53
-	2	2	2	2	2	2	2	2	2	1-18023-4	SCR, SKT HD CAP M4 X 20.0	52
-	1	1	1	1	1	1	1	1	1	18030-1	NUT, HEX, REG M3	51
-	1	1	1	1	1	1	1	1	1	811242-5	BUMPER, HOLD DOWN	50
-	1	1	1	1	1	1	1	1	1	690753-2	SPACER, TONKER	49
-	1	1	1	1	1	1	1	1	1	18024-3	SCR, BTN SKT HD CAP (M3 X 10.0)	48
-	-	-	-	-	-	-	-	-	-	-	47	
-	1	1	1	1	1	1	1	1	1	1338676-1	CAM, UNIVERSAL POST-FEED	46
-	1	1	1	1	1	1	1	1	1	1320999-3	APPLICATOR SUBASSEMBLY, HDI	45
-	1	1	1	1	1	1	1	1	1	690191-1	PLUG, NYLON	44
-	1	1	1	1	1	1	1	1	1	1338660-1	RAM	43
-	1	1	1	1	1	1	1	1	1	690125-1	SHIM SUB-ASSY	42
-	1	1	1	1	1	1	1	1	1	690124-1	WASHER, RAM (.115)	41
-	1	1	1	1	1	1	1	1	1	2-18024-6	SCR, BTN SKT HD CAP (M8 X 25.0)	40
-	1	1	1	1	1	1	1	1	1	23241-1	BALL, STEEL	39
-	1	1	1	1	1	1	1	1	1	2-22278-7	SPRING, COMPRESSION	38
-	1	1	1	1	1	1	1	1	1	1320922-1	DISC, ADJUST, INSULATION CRIMP	37
-	1	1	1	1	1	1	1	1	1	354777-1	WIRE DISC, ASSEMBLY	36
-	1	1	1	1	1	1	1	1	1	22480-5	SPRING, COMPRESSION	35
-	1	1	1	1	1	1	1	1	1	690212-1	POST, RAM	34
-	1	1	1	1	1	1	1	1	1	1320934-1	SUPPORT, TERMINAL	33
-	2	2	2	2	2	2	2	2	2	1-18024-0	SCR, BTN SKT HD CAP (M4 X 20.0)	32
-	1	1	1	1	1	1	1	1	1	18027-2	WASHER, FLAT, REG M4	31
-	1	1	1	1	1	1	1	1	1	1-18023-2	SCR, SKT HD CAP M4 X 12.0	30
-	1	1	1	1	1	1	1	1	1	1320908-8	SPACER, STRIP GUIDE	29
-	1	1	1	1	1	1	1	1	1	1633073-1	STRIP GUIDE ASSEMBLY	28
-	1	1	1	1	1	1	1	1	1	1-455888-6	SPACER, CRIMPER	27
-	2	2	2	2	2	2	2	2	2	1-22284-0	SPRING, COMPRESSION	26
-	1	1	1	1	1	1	1	1	1	356835-1	LEVER, DRAG RELEASE	25
-	1	1	1	1	1	1	1	1	1	240792-1	DRAG, TERMINAL	24
-	1	1	1	1	1	1	1	1	1	1320928-1	PLATE, STRIP GUIDE	23
-	1	1	1	1	1	1	1	1	1	980371-4	SCR, SKT HD SHLDR 5.0 DIA X 6.0	22
-	1	-	1	1	-	1	-	1	-	690472-2	STRIPPER	21
-	1	1	1	1	1	1	1	1	1	1-18023-1	SCR, SKT HD CAP M4 X 10.0	20
-	4	4	4	4	4	4	4	4	4	18025-2	WASHER, SPRG LOCK, REG M4	19
-	-	-	-	-	-	-	-	-	-	690472-1	STRIPPER	18
-	-	-	-	-	-	-	-	-	-	-	17	
-	1	-	-	-	-	-	-	-	-	1338684-2	SHEAR HOLDER, FRONT	16
-	-	-	-	-	-	-	-	-	-	-	15	
-	-	-	-	-	-	-	-	-	-	-	14	
-	-	-	-	-	-	-	-	-	-	-	13	
-	1	1	1	1	1	1	1	1	1	3-22280-3	SPRING, COMPRESSION	12
-	1	1	1	1	1	1	1	1	1	356885-5	STOP, SHEAR	11
-	-	-	-	-	-	-	-	-	-	-	10	
-	1	1	1	1	1	1	1	1	1	1-1320921-0	SHEAR HOLDER, FRONT, CUT	9
-	1	1	1	1	1	1	1	1	1	318707-1	FLOATING SHEAR, FRONT	8
-	1	2	2	2	2	2	2	2	2	1-1333203-3	ANVIL, COMBINATION	7
-	1	1	1	1	1	1	1	1	1	2-240641-7	SPACER	6
-	-	-	-	-	-	-	-	-	-	-	5	
-	1	1	1	1	1	1	1	1	1	1338680-2	DEPRESSOR, SHEAR	4
-	1	1	1	1	1	1	1	1	1	238011-4	BLOCK, CRIMPER SPACER	3
-	1	2	2	2	2	2	2	2	2	6-456135-2	CRIMPER, INSULATION O PREMIUM	2
-	1	1	1	1	1	1	1	1	1	455888-5	SPACER, CRIMPER	1
-	1	2	2	2	2	2	2	2	2	3-456404-5	CRIMPER, WIRE PREMIUM	1

-77	-76	-72	-71	-6	-2	-1	PART NO	DESCRIPTION	ITEM NO
-	-	-	-	-	-	-	-	-	84
-	-	-	-	-	-	-	-	-	83
-	-	-	-	-	-	-	-	-	82
-	-	-	-	-	-	-	-	-	81
-	-	-	-	-	-	-	-	-	80
-	-	-	-	-	-	-	-	-	79
-	-	-	-	-	-	-	-	-	78
-	-	-	-	-	-	-	-	-	77
-	-	-	-	-	-	-	-	-	76
-	-	-	-	-	-	-	-	-	75
-	-	-	-	-	-	-	-	-	74

DIMENSIONS: mm [IN]		TOLERANCES UNLESS OTHERWISE SPECIFIED:	
9 PLC ±		3 PLC ±	
5 PLC ±		4 PLC ±	
ANGLES ±			
MATERIAL		FINISH	
-		-	

APPD: M. CLIFFORD	08AUG08	NAME	SIDE FEED HDI APPLICATOR
PRODUCT SPEC		SIZE	CAGE CODE DRAWING NO
APPLICATION SPEC	See Table	RESTRICTED TO	
WEIGHT	A	00779	C-1426455
CUSTOMER DRAWING		SCALE	3:5

Mouser Electronics

Authorized Distributor

Click to View Pricing, Inventory, Delivery & Lifecycle Information:

[TE Connectivity:](#)

[1426455-1](#)