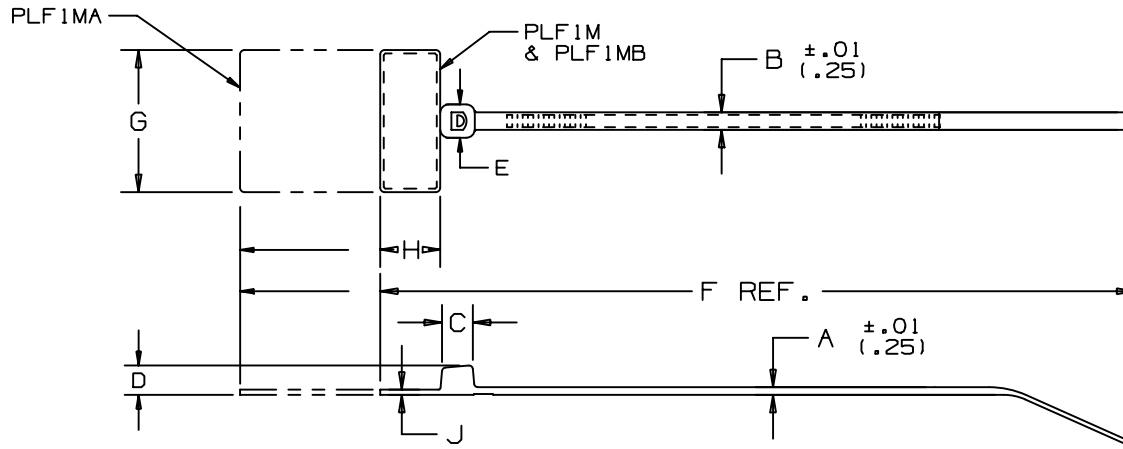


THIS COPY IS PROVIDED ON A RESTRICTED BASIS AND IS NOT TO BE USED IN ANY WAY DETRIMENTAL TO THE INTERESTS OF PANDUIT CORP.



PANDUIT * PART NO.	BUNDLE DIA.		A	B	C	D	E	F	G	H	J	WRITE-ON AREA	MINIMUM LOOP TENSILE	CROSS-SECTION	WEIGHT LBS/100 (G)
	MIN. IN. (mm)	MAX. IN. (mm)	IN. (mm)	IN. (mm)	IN. (mm)	IN. (mm)	IN. (mm)	IN. (mm)	IN. (mm)	IN. (mm)	IN. (mm)	IN. (mm)	lbs. (N)		
PLF 1M	.06 (1.5)	.87 (22.1)	.045 (1.1)	.098 (2.5)	.177 (4.5)	.154 (3.9)	.180 (4.6)	4.3 (109)	.812 (20.6)	.366 (9.3)	.028 (.71)	.31 X .75 (7.9 X 19.1)	18 (80)	MINIATURE	.10 (46)
PLF 1MA	.06 (1.5)	.87 (22.1)	.045 (1.1)	.098 (2.5)	.177 (4.5)	.154 (3.9)	.180 (4.6)	5.1 (130)	.812 (20.6)	1.10 (28.)	.028 (.71)	.76 X 1.04 (19.1 X 26.4)	18 (80)	MINIATURE	.16 (73)
PLF 1MB	.06 (1.5)	.75 (19)	.045 (1.1)	.098 (2.5)	.177 (4.5)	.154 (3.9)	.180 (4.6)	3.98 (101)	.980 (24.9)	.366 (9.3)	.028 (.71)	.31 X .92 (7.9 X 23.4)	18 (80)	MINIATURE	.10 (46)

NOTES:

- * SEE CURRENT PRICE SHEET FOR PART NUMBER SUFFIX DESIGNATION FOR PACKAGE SIZE AND PART COLOR.
- RECOGNIZED UNDER THE COMPONENT PROGRAM OF UNDERWRITERS LABORATORIES INC.

										DIMENSIONS IN PARENTHESES ARE IN METRIC UNITS					
										PANDUIT CORP. TINLEY PARK, ILLINOIS					
										PAN-TY® FLAG MARKER TIE PLF SERIES					
										UNLESS OTHERWISE SPECIFIED, DIMENSIONAL TOLERANCES ARE: (.X) ± .0005 (.0125) (.XXX) ± .001 (.025) (.XX) ± .001 (.025) ANGLES ± .001 (.025)			UNLESS OTHERWISE SPECIFIED, ALL DIMENSIONS ARE GIVEN IN INCHES, THIRD ANGLE PROJECTION.		
										DRAWN BY L.V./AJC		MAT'L: NYLON 6/6		SCALE NONE	
11	2/13/03	JABO	ADDED WRITE-ON AREA FOR ALL PARTS				2723	11			DRAWING NO. SS-2723		DWG A SIZE		
REV	DATE	BY	CHK	DESCRIPTION			ECN - R	CUST	SUP	CHK'D HVP					

Mouser Electronics

Authorized Distributor

Click to View Pricing, Inventory, Delivery & Lifecycle Information:

Panduit:

[PLF1M-M0](#) [PLF1M-M](#) [PLF1MA-C3](#) [PLF1MA-C4Y](#) [PLF1MA-M](#) [PLF1MB-M](#) [PLF1MA-M4Y](#) [PLF1M-M6](#) [PLF1MA-M0](#)
[PLF1M-M10](#) [PLF1MA-M6](#) [PLF1M-M4](#) [PLF1M-M4Y](#) [PLF1M-M2](#) [PLF1MA-M3](#) [PLF1MA-M2](#) [PLF1MA-M10](#)
[PLF1MA-M5](#) [PLF1M-M3](#)