

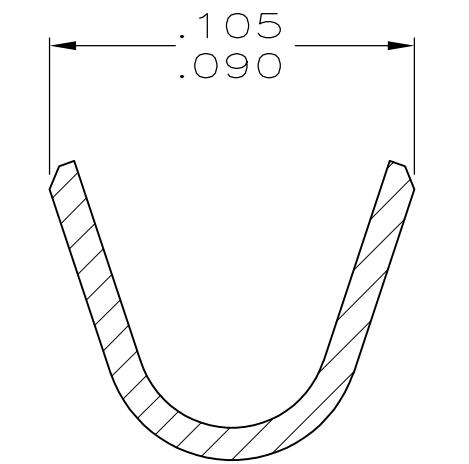
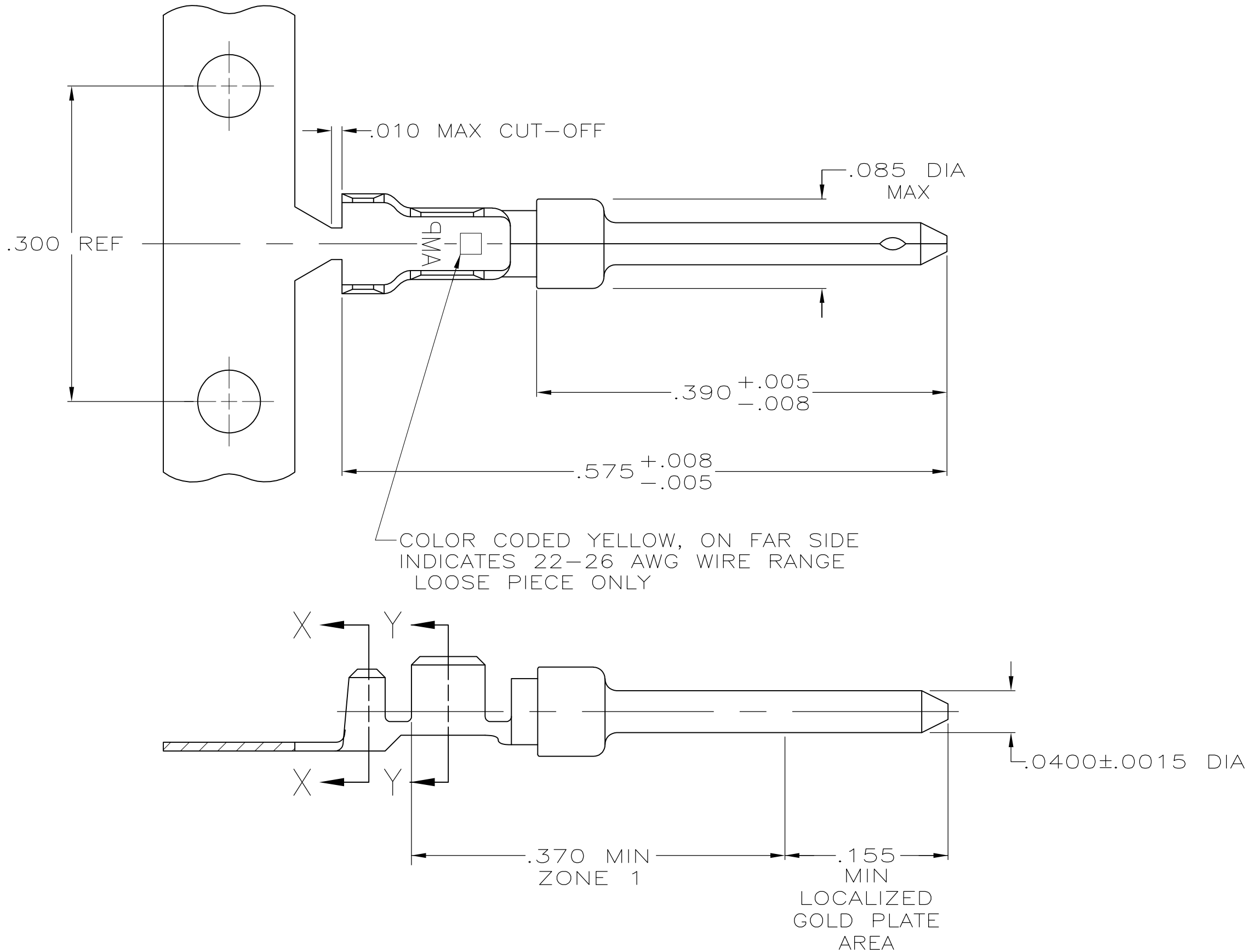
LOC	DIST	REVISIONS				
		P	LTR	DESCRIPTION	DATE	DWN
GP	00					APVD
		L		REVISED PER ECO-12-021696	27FEB2013	CJV
						SLB

D

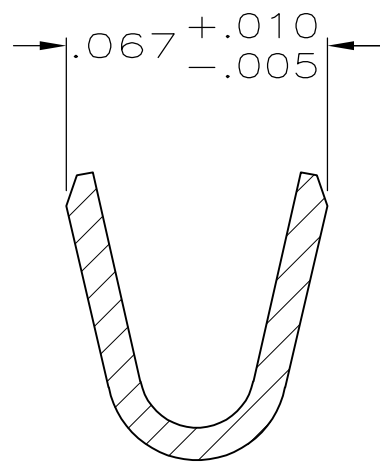
C

B

A





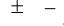
SECTION X-X
INSULATION BARREL
SCALE 20:1



SECTION Y-Y
WIRE BARREL
SCALE 20:1

- 1 FOR MINI-APPLICATOR.
- 2 FOR HAND TOOL USE ONLY.
- 3. WIRE RANGE OF 22-26, INSULATION RANGE OF .040-.050.
- 4. GOLD PLATING MAY NOT APPEAR ON CARRIER STRIP. NICKEL UNDERPLATE COVERS ENTIRE CONTACT.
- 5 GOLD PLATING PER MIL-G-45204. NICKEL PLATING PER QQ-N-290. TIN PLATING PER MIL-T-10727.
- 6 GOLD PLATED IN LOCALIZED GOLD PLATE AREA AS FOLLOWS: .000030 MIN GOLD IN MATED AREA, GOLD FLASH ON REMAINDER OF LOCALIZED GOLD PLATE AREA AND ZONE 1 OF CONTACT, ALL OVER .000050 MIN NICKEL UNDERPLATE. OR GOLD FLASH OVER PALLADIUM-NICKEL PLATE, .000030 MIN TOTAL IN MATED AREA, GOLD FLASH ON REMAINDER OF LOCALIZED GOLD PLATE AREA AND ZONE 1 OF CONTACT, ALL OVER .000050 MIN NICKEL UNDERPLATE.
- 7 .000001 MIN GOLD ON LOCALIZED GOLD PLATE AREA AND ZONE 1 OVER .000030 MIN NICKEL.
- 8 GOLD PLATED IN LOCALIZED GOLD PLATED AREA, .000001 MIN GOLD IN MATED AREA, TIN PLATED WIRE BARRELS, OVER .000030 NICKEL.
- 9 GOLD PLATED IN LOCALIZED GOLD PLATED AREA, .000030 GOLD IN MATED AREA, TIN PLATED WIRE BARRELS, OVER .000050 NICKEL.

OBSOLETE	SMALL PACK	7	2	LOOSE PIECE	1-745254-7
OBSOLETE	STANDARD	9	2	LOOSE PIECE	1-745254-6
OBSOLETE	STANDARD	9	1	STRIP	1-745254-4
OBSOLETE	STANDARD	8	2	LOOSE PIECE	1-745254-3
OBSOLETE	STANDARD	8	1	STRIP	1-745254-1
	STANDARD	7	2	LOOSE PIECE	745254-7
	STANDARD	6	2	LOOSE PIECE	745254-6
	STANDARD	7	1	STRIP	745254-3
	STANDARD	6	1	STRIP	745254-2
PACKAGING TYPE		FINISH	USE	TYPE	PART NUMBER

THIS DRAWING IS A CONTROLLED DOCUMENT. DIMENSIONING AND TOLERANCING PER ASME Y14.5M-2009				DWN S.WELDON 9-9-86	 TE Connectivity	
				CHK C.RICHARD 9-9-86		
DIMENSIONS: INCHES		TOLERANCES, UNLESS OTHERWISE SPECIFIED:		APVD V. KUMAR 9-10-86	NAME	
		0 PLC ± -		PRODUCT SPEC		
		1 PLC ± -		—		
		2 PLC ± -		APPLICATION SPEC		
		3 PLC ± -.005		114-10000		
4 PLC ± -		ANGLES ± -		WEIGHT	SIZE	CAGE CODE
MATERIAL		FINISH		—	A2	00779
BRASS PER MIL-C-50				DRAWING NO		
SEE TABLE		CUSTOMER DRAWING				C-745254
				SCALE	10:1	SHEET
						1 of 1
						REV L

Mouser Electronics

Authorized Distributor

Click to View Pricing, Inventory, Delivery & Lifecycle Information:

[TE Connectivity:](#)

[745254-2 \(MOUSER REEL\)](#)