

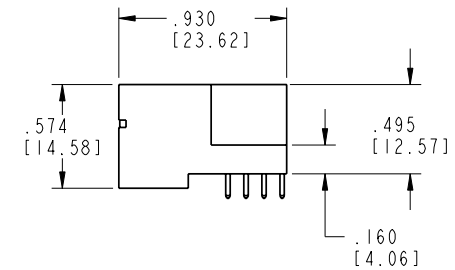
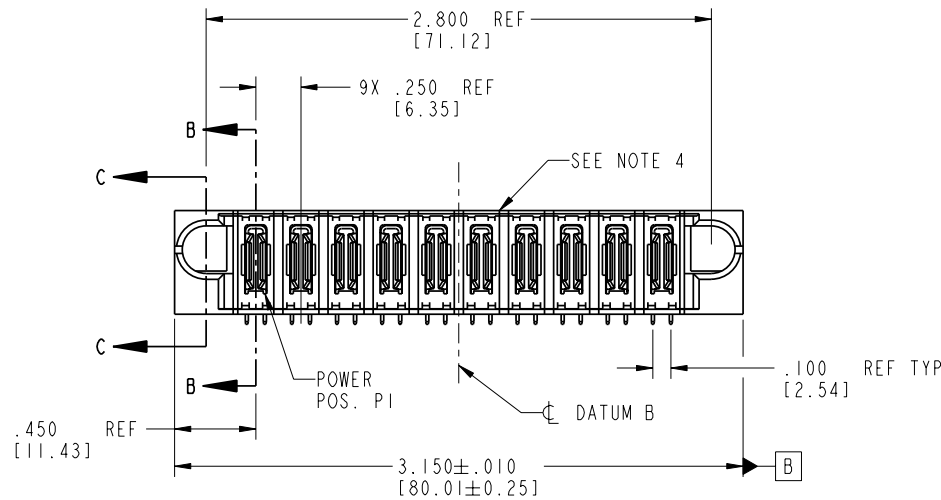
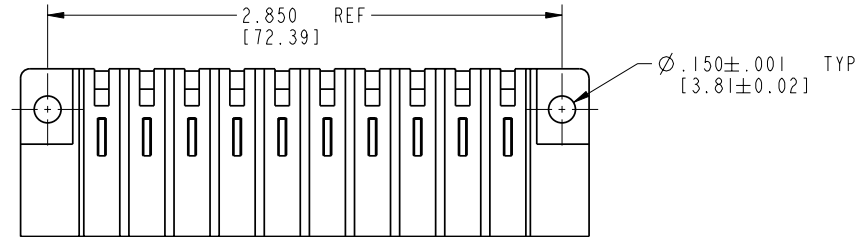


Tous droits strictement reserves. Reproduction ou communication a des tiers interdite sous quelque forme que ce soit sans autorisation écrite du propriétaire. Propriété de c FCI. Droits de reproduction FCI.



All rights strictly reserved. Reproduction or issue to third parties in any form whatever is not permitted without written authority from the proprietor. Property of FCI. Copyright FCI.

PRODUCT NO.	POWER										E2	
	E1	P1	P2	P3	P4	P5	P6	P7	P8	P9		P10
51628-001-- NOTE ③		PA	PA	PA	PA	PA	PA	PA	PA	PA	PA	



CODE	DIM "M" MATING LENGTH	CONTACT TYPE
PA	N/A [N/A]	POWER

mat'l code				tolerances unless otherwise specified		CUSTOMER		FCI	
SEE NOTE 2						COPY		www.fciconnect.com	
ltr	ecn no.	dr	date	linear	.XX±.01/0.X±0.3	projection		title	
A	V90695	CHB	03-15-99		.XXX±.005/0.XX±0.13			10P	
B	V11177	CGD	04-10-01		.XXX±.002/0.XXX±0.051				
C	V12541	DAI	12-05-01	angles	0°±2°	INCH/MM		RIGHT ANGLE SOLDER HEADER	
D	DG06-0156	RYAN	04/07/06	dr	C.RAROT 03-15-99				
				engr	J.BROWN 03-15-99	scale		product family	
				chr	J.BROWN 03-15-99				
				appd	J.BROWN 03-15-99	1:1		PwrBlade	
				sheet index					
				revision	D D D D			size	
				sheet	1 2 3 4				
								dwg no	
								51628	
								code	
								213	
								sheet	
								1 of 4	

cage code 22526

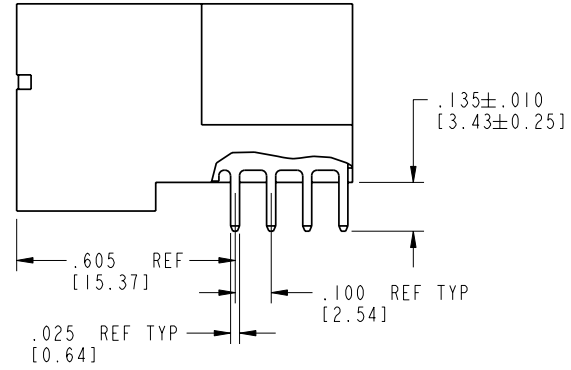
Pro/E

Tous droits strictement reserves. Reproduction ou communication a des tiers interdite sous quelque forme que ce soit sans autorisation écrite du propriétaire. Propriété de c FCI. Droits de reproduction FCI.

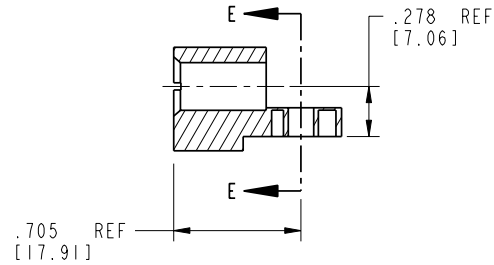


All rights strictly reserved. Reproduction or issue to third parties in any form whatever is not permitted without written authority from the proprietor. Property of FCI. Copyright FCI.

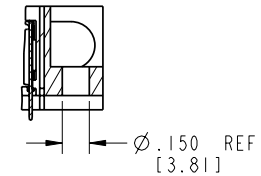
PRODUCT NUMBER  
51628-001--  
NOTE (3)



BROKEN-OUT SECTION B-B  
SCALE 2:1



SECTION C-C



PARTIAL SECTION E-E

mat'l code				SEE NOTE 2		tolerances unless otherwise specified		CUSTOMER		FCI	
lfr	ecr no.	dr	date	linear	linear	linear	linear	COPY	projection	title	www.fciconnect.com
D					.XX±.01/0.X±0.3	.XXX±.005/0.XX±0.13	.XXX±.002/0.XXX±0.051			10P	
				angles	0°±2°					RIGHT ANGLE SOLDER HEADER	
				dr	C. RAROT	03-15-99		INCH/MM		product family	PwrBlade
				enrg	J. BROWN	03-15-99		scale		size	213
				chr	J. BROWN	03-15-99		1:1		dwg no	51628
				appd	J. BROWN	03-15-99				code	2 of 4
sheet index	revision sheet										

cage code 22526

Pro/E

All rights strictly reserved. Reproduction or issue to third parties in any form whatever is not permitted without written authority from the proprietor. Property of FCI. Copyright FCI.



[www.fciconnect.com](http://www.fciconnect.com)

LOP

RIGHT ANGLE SOLDER HEADER

product family	PwrBlade	code
----------------	----------	------

size	dwg no	213
------	--------	-----

A	51628	sheet 3 of 4
---	-------	-----------------

[illegible]

coge code	22526
-----------	-------

Tous droits strictement reserves. Reproduction ou communication a des tiers interdite sous quelque forme que ce soit sans autorisation écrite du propriétaire. Propriété de c FCI. Droits de reproduction FCI.



All rights strictly reserved. Reproduction or issue to third parties in any form whatever is not permitted without written authority from the proprietor. Property of FCI. Copyright FCI.

PRODUCT NUMBER
51628-001--
NOTE ③

NOTES:

1. DIMENSIONS AND TOLERANCES ARE IN ACCORDANCE WITH ASME Y14.5M, 1994 UNLESS OTHERWISE SPECIFIED.

CONNECTOR NOTES:

- ② HOUSING MATERIAL: UL 94 V-0 GLASS FILLED HIGH-TEMP THERMOPLASTIC  
POWER CONTACT MATERIAL: COPPER ALLOY  
SIGNAL PIN MATERIAL: COPPER ALLOY
- ③ PLATING:  
SEE PRINT 10064183 FOR PLATING SPEC OF 51628-001; 51628-001LF
- ④ MANUFACTURER'S NAME, P/N, AND DATE CODE TO APPEAR ON THIS SURFACE.

5. PRODUCT SPECIFICATION GS-12-149.  
APPLICATION SPECIFICATION BUS-20-067.

6. PACKAGED IN TRAYS.

PCB NOTES:

7. ALL HOLE DIAMETERS ARE FINISHED HOLE SIZE.

- ⑧ MOUNTING HOLES, WHERE APPLICABLE, ARE UNPLATED.
- ⑨  $\varnothing .0453 \pm .0010$  [1.151 $\pm$ 0.025] DRILLED HOLES PLATED WITH  
.0003 [0.008] MIN SnPb OVER .001 [0.03]  
TO .003 [0.08] Cu PLATING TO ACHIEVE  
 $\varnothing .040 \pm .003$  [1.02 $\pm$ .07] HOLE.

⑩ "DIM XXX" TO BE DETERMINED BY THE CUSTOMER.

⑪ CONNECTOR KEEP-OUT ZONE.

mat'l code				SEE NOTE 2		tolerances unless otherwise specified		CUSTOMER		FCI	
lfr	ecr no.	dr	date	linear				COPY	www.fciconnect.com		
D								projection	title 10P		
									RIGHT ANGLE SOLDER HEADER		
				angles					product family PwrBlade		
				dr	C.RAROT	03-15-99		INCH/MM	code 213		
				enrg	J.BROWN	03-15-99		scale	sheet 4 of 4		
				chr	J.BROWN	03-15-99		1:1	size		
				appd	J.BROWN	03-15-99			dwg no 51628		
sheet index	revision sheet										

Pro/E

cage code 22526

# Mouser Electronics

Authorized Distributor

Click to View Pricing, Inventory, Delivery & Lifecycle Information:

[FCI / Amphenol:](#)

[51628-001LF](#) [51628-003LF](#)