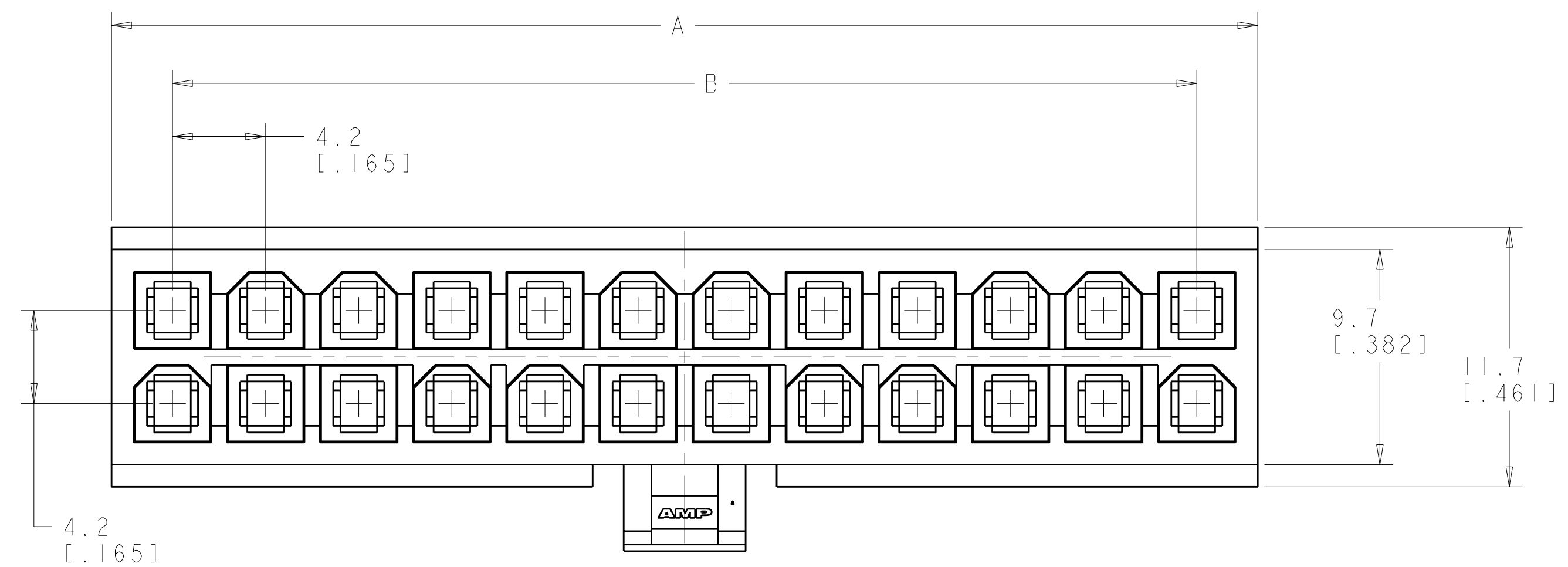
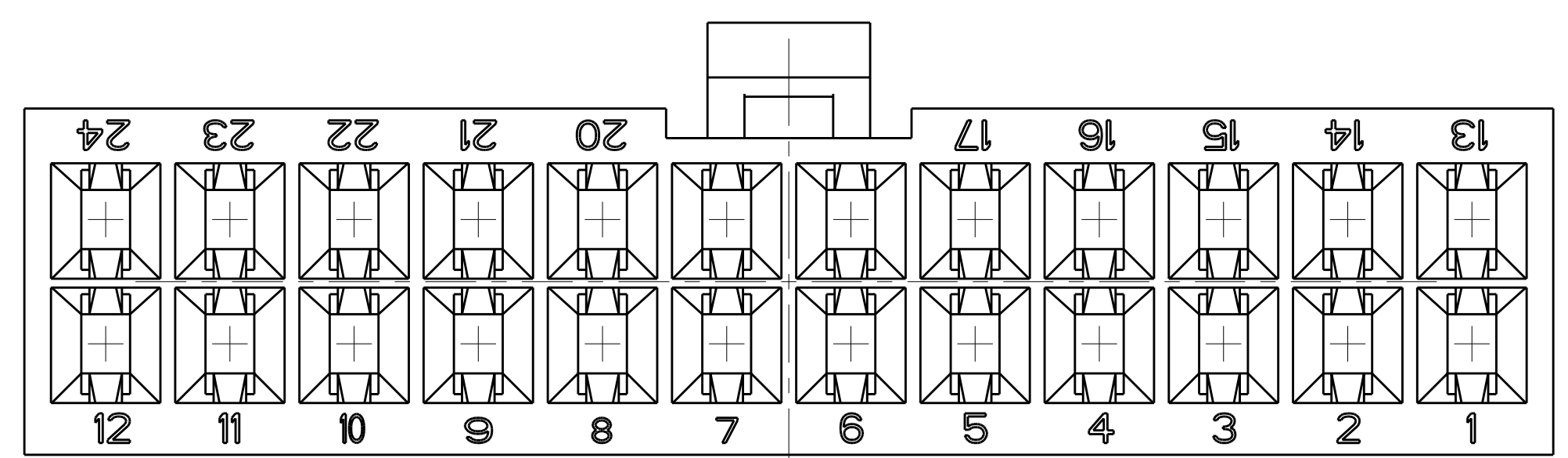
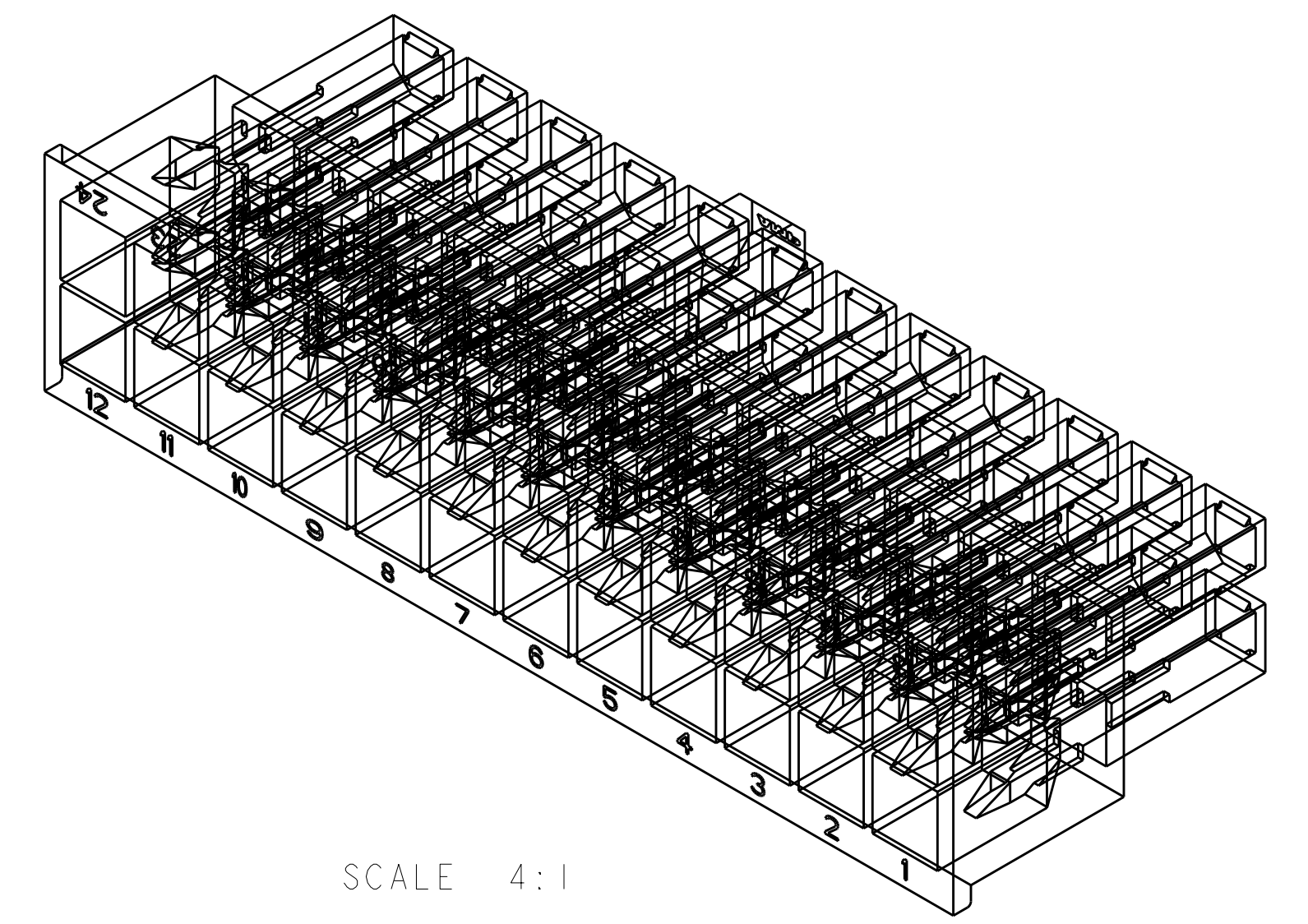
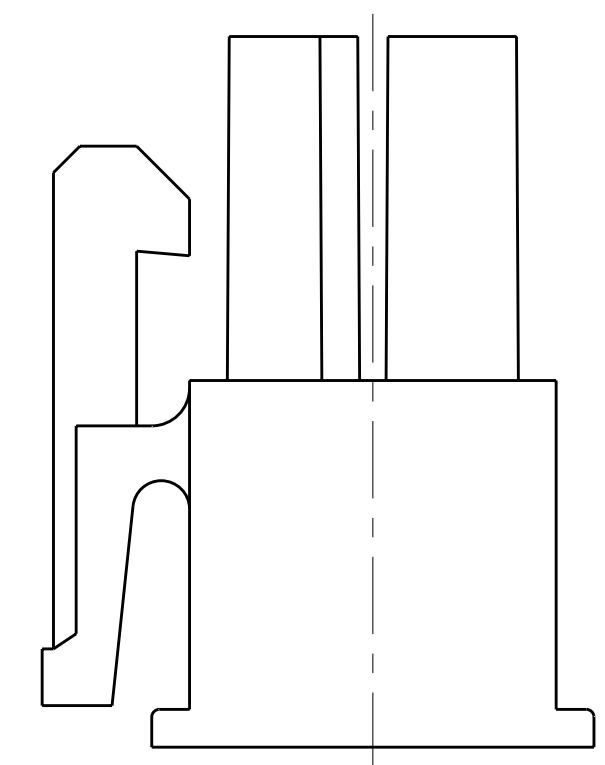
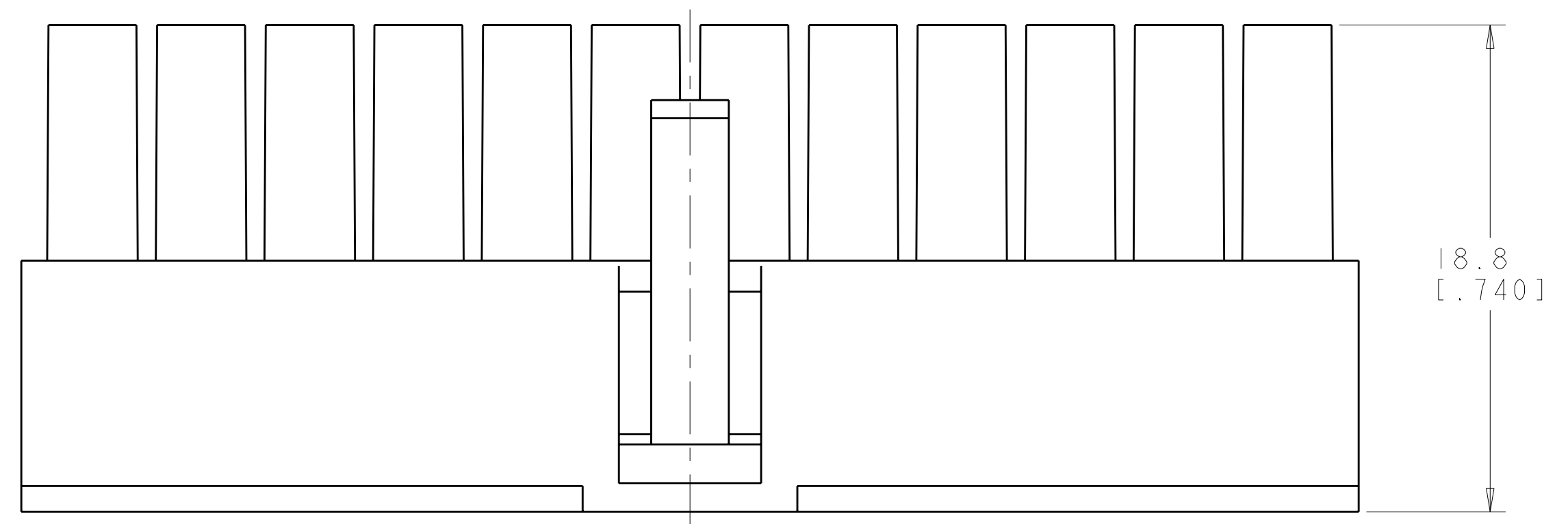


LOC	DIST	REV	DATE	BY	APPD
CM	00	C1	15MAR2011	RK	HMR
		REVISIONS			
		DESCRIPTION			
		DATE			
		BY			
		APPD			



- △ NYLON, UL94V-0, NATURAL.
- 2. DIMENSIONS IN BRACKETS ARE IN INCHES.
- 3. FEMALE CONTACTS MUST BE INSERTED SO THAT THE TOP OF THE WIRE AND INSULATION CRIMPS ARE FACING THE CIRCUIT NUMBER OF THE POSITION INTO WHICH IT IS BEING INSERTED OR 180° FROM THE CIRCUIT NUMBER FOR THAT POSITION.



4032.2	24	46.2[1.82]	51.7[2.04]	2-794657-4
3717.6	22	42[1.65]	47.5[1.87]	2-794657-2
3403	20	37.8[1.49]	43.3[1.71]	2-794657-0
3088.5	18	33.6[1.32]	39.1[1.54]	1-794657-8
2774	16	29.4[1.16]	34.9[1.37]	1-794657-6
2459.5	14	25.2[0.99]	30.7[1.21]	1-794657-4
2144.9	12	21[0.83]	26.5[1.04]	1-794657-2
1830.4	10	16.8[0.66]	22.3[0.88]	1-794657-0
1515.9	8	12.6[0.5]	18.1[0.71]	794657-8
1201.3	6	8.4[0.33]	13.9[0.55]	794657-6
886.8	4	4.2[0.17]	9.7[0.38]	794657-4
575.1	2	0[0]	5.5[0.22]	794657-2
VOLUME mm ³	NO OF POSITIONS	B	A±0.2[.01]	PART NUMBER

THIS DRAWING IS A CONTROLLED DOCUMENT.		DRN	27JUN2007	TE Connectivity	
DIMENSIONS: mm [INCHES]		CHK	27JUN2007	RECEPTACLE HOUSING, 2 TO 24 POSITION, AMP-DUAC(TM) POWER CONNECTOR	
TOLERANCES UNLESS OTHERWISE SPECIFIED:		APPD	27JUN2007	SIZE CAGE CODE DRAWING NO	
9 PLC	±0.2[.01]	APVD		A100779C=794657	
5 PLC	±0.2[.01]	NAME		RESTRICTED TO	
3 PLC	±0.13[.005]	PRODUCT SPEC		SCALE 4:1 SHEET 1 OF 1 REV C1	
4 PLC	±	APPLICATION SPEC			
ANGLES	±	WEIGHT			
FINISH	±0°30'	CUSTOMER DRAWING			



Mouser Electronics

Authorized Distributor

Click to View Pricing, Inventory, Delivery & Lifecycle Information:

[TE Connectivity:](#)

[1-794657-6](#)