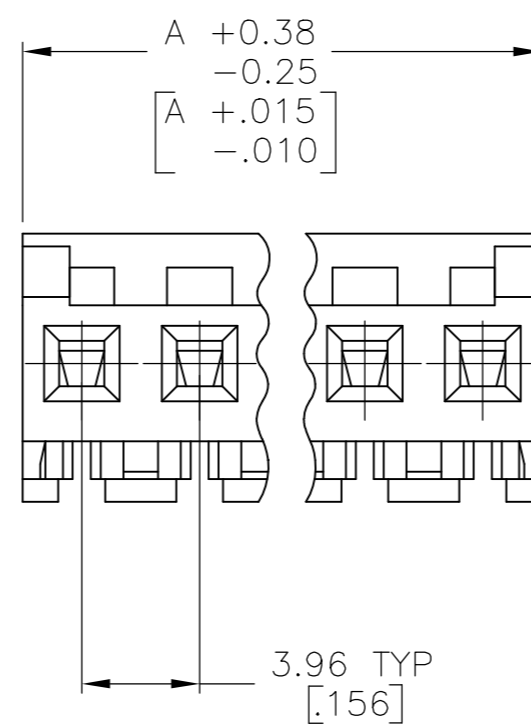
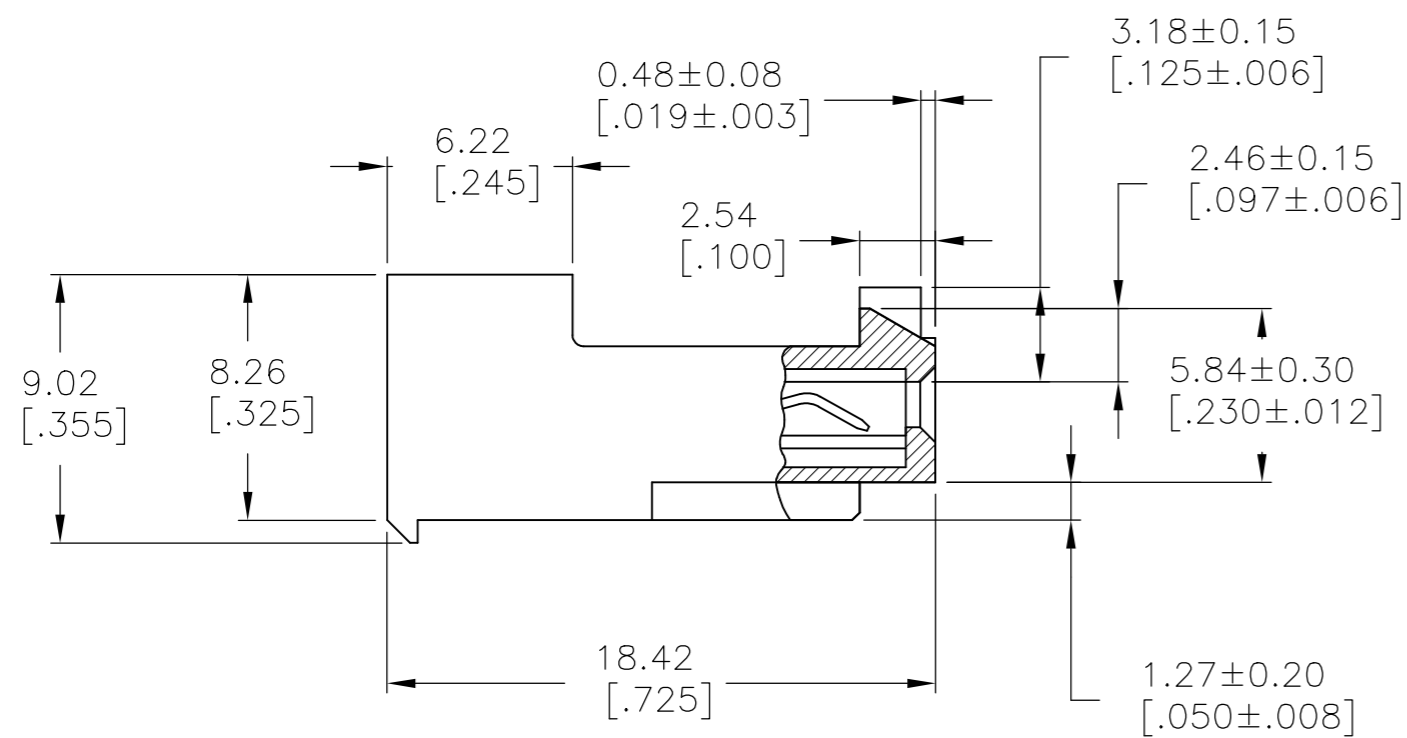
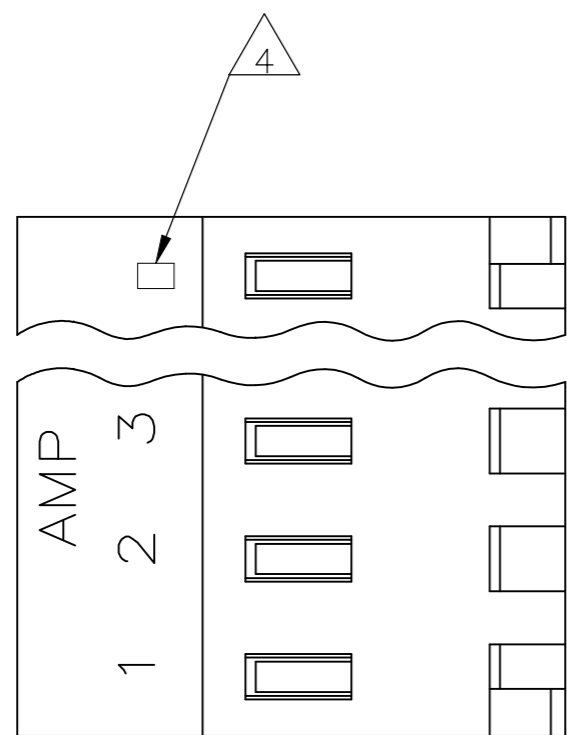


THIS DRAWING IS UNPUBLISHED. RELEASED FOR PUBLICATION  
 © COPYRIGHT - By - TE CONNECTIVITY ALL RIGHTS RESERVED.

| LOC | DIST | REVISIONS   |                           |           |        |
|-----|------|-------------|---------------------------|-----------|--------|
| P   | LTR  | DESCRIPTION | DATE                      | DWN       | APVD   |
| CM  | 54   | H2          | REVISED PER ECR-17-018328 | 10JAN2018 | BDA SG |



1 MATERIAL: CONNECTOR - NYLON UL94V-2 (BLUE).  
 CONTACTS - 0.30[.012] THICK COPPER ALLOY  
 (BRIGHT TIN LEAD 0.00203  
 [.000080] MIN THK FOR CONTACTS  
 643821-2 THRU 2-643821-4,  
 MATTE WHISKER MITIGATED TIN  
 .00203(.000080) MIN THICKNESS OVER  
 NICKEL UNDERPLATE FOR 3-643821-2  
 THRU 5-643821-4)

2 CONTACTS ACCEPT 26 AWG WIRE WITH 2.41[.095] MAX  
 INSULATION DIAMETER.

3 CONTACTS MUST ACCEPT 1.14±0.03 [.045±.001] SQUARE  
 POST AND REMAIN LOCKED IN POSITION.

4 IDENTIFICATION NUMBER FOR LAST CIRCUIT MAY  
 NOT APPEAR ON ALL ASSEMBLIES.

5 DIMENSIONS IN BRACKETS ARE IN INCHES.

6 HOUSING FEATURES ARE: CLOSED END WITH LOCKING  
 RAMP & POLARIZING TABS.

7 OBSOLETE PARTS: OBSOLETE CIS STREAMLINING PER D.RENAUD/D.SINISI

8 OBSOLETE PARTS

| DIM A         | NO OF CIRCUITS | PART NO    |
|---------------|----------------|------------|
| 95.10 [3.744] | 24             | 5-643821-4 |
| 91.14 [3.588] | 23             | 5-643821-3 |
| 87.17 [3.432] | 22             | 5-643821-2 |
| 83.21 [3.276] | 21             | 5-643821-1 |
| 79.25 [3.120] | 20             | 5-643821-0 |
| 75.29 [2.964] | 19             | 4-643821-9 |
| 71.32 [2.808] | 18             | 4-643821-8 |
| 67.36 [2.652] | 17             | 4-643821-7 |
| 63.40 [2.496] | 16             | 4-643821-6 |
| 59.44 [2.340] | 15             | 4-643821-5 |
| 55.47 [2.184] | 14             | 4-643821-4 |
| 51.51 [2.028] | 13             | 4-643821-3 |
| 47.55 [1.872] | 12             | 4-643821-2 |
| 43.59 [1.716] | 11             | 4-643821-1 |
| 39.62 [1.560] | 10             | 4-643821-0 |
| 35.66 [1.404] | 9              | 3-643821-9 |
| 31.70 [1.248] | 8              | 3-643821-8 |
| 27.74 [1.092] | 7              | 3-643821-7 |
| 23.77 [.936]  | 6              | 3-643821-6 |
| 19.81 [.780]  | 5              | 3-643821-5 |
| 15.85 [.624]  | 4              | 3-643821-4 |
| 11.89 [.468]  | 3              | 3-643821-3 |
| 7.92 [.312]   | 2              | 3-643821-2 |
| 95.10 [3.744] | 24             | 2-643821-4 |
| 91.14 [3.588] | 23             | 2-643821-3 |
| 87.17 [3.432] | 22             | 2-643821-2 |
| 83.21 [3.276] | 21             | 2-643821-1 |
| 79.25 [3.120] | 20             | 2-643821-0 |
| 75.29 [2.964] | 19             | 1-643821-9 |
| 71.32 [2.808] | 18             | 1-643821-8 |
| 67.36 [2.652] | 17             | 1-643821-7 |
| 63.40 [2.496] | 16             | 1-643821-6 |
| 59.44 [2.340] | 15             | 1-643821-5 |
| 55.47 [2.184] | 14             | 1-643821-4 |
| 51.51 [2.028] | 13             | 1-643821-3 |
| 47.55 [1.872] | 12             | 1-643821-2 |
| 43.59 [1.716] | 11             | 1-643821-1 |
| 39.62 [1.560] | 10             | 1-643821-0 |
| 35.66 [1.404] | 9              | -643821-9  |
| 31.70 [1.248] | 8              | -643821-8  |
| 27.74 [1.092] | 7              | -643821-7  |
| 23.77 [.936]  | 6              | -643821-6  |
| 19.81 [.780]  | 5              | -643821-5  |
| 15.85 [.624]  | 4              | -643821-4  |
| 11.89 [.468]  | 3              | -643821-3  |
| 7.92 [.312]   | 2              | -643821-2  |

7 SUPERSEDED

8 OBSOLETE SUPERSEDED

7 SUPERSEDED

8 SUPERSEDED

|  |  |                              |  |           |
|--|--|------------------------------|--|-----------|
| THIS DRAWING IS A CONTROLLED DOCUMENT. |  | DWN<br>B.LEWIS<br>12MAR96    |  |           |
| DIMENSIONS:<br>mm [INCHES]             |  | CHK<br>R.SWING<br>12MAR96    |  |           |
| TOLERANCES UNLESS OTHERWISE SPECIFIED: |  | APVD<br>D.CLARK<br>12MAR96   | NAME<br>MTA-156 CONNECTOR ASSEMBLY<br>26 AWG, STANDARD |           |
| 0 PLC ± -                              |  | PRODUCT SPEC<br>108-1051     | SIZE<br>A2   |           |
| 1 PLC ± -                              |  | APPLICATION SPEC<br>114-1020 | CAGE CODE<br>00779                                     |           |
| 2 PLC ± -                              |  | WEIGHT                       | DRAWING NO<br>643821                                   |           |
| 3 PLC ± -                              |  | FINISH                       | RESTRICTED TO<br>-                                     |           |
| 4 PLC ± -                              |  | MATERIAL<br>1                | SCALE<br>4:1   |           |
| ANGLES ± -                             |  | CUSTOMER DRAWING             |  |           |
|  |  | SHEET<br>1 of 1              |  | REV<br>H2 |

# Mouser Electronics

Authorized Distributor

Click to View Pricing, Inventory, Delivery & Lifecycle Information:

[TE Connectivity:](#)

[4-643821-1](#)