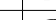





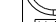


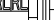
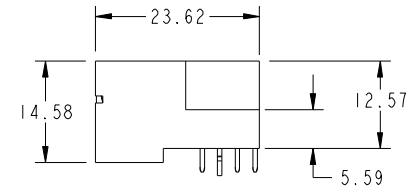
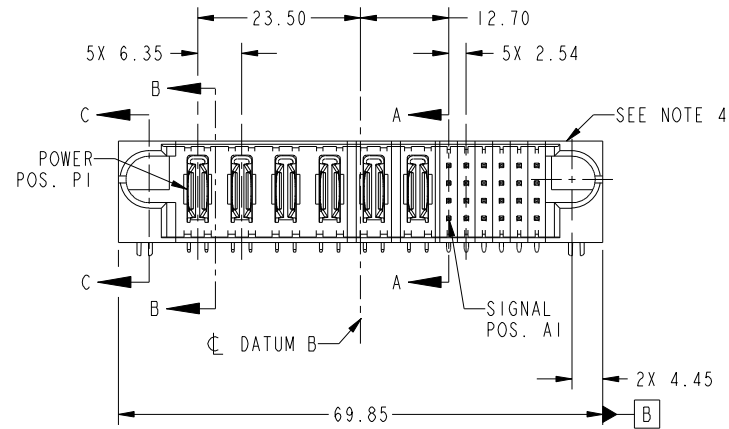


Tous droits strictement reserves. Reproduction ou communication a des tiers interdite sous quelque forme que ce soit sans autorisation écrite du propriétaire. Propriete de c FCI. Droits de reproduction FCI.



All rights strictly reserved. Reproduction or issue to third parties in any form whatever is not permitted without written authority from the proprietor. Property of FCI. Copyright FCI.

PRODUCT NO.	ROWS	POWER						SIGNAL						E2	
		E1	P1	P2	P3	P4	P5	P6	1	2	3	4	5		6
51732-056-- NOTE 3	D C B A		PA	PA	PA	PA	PA	PA	H	H	H	H	H	H	
			PA	PA	PA	PA	PA	PA	G	G	G	G	G	G	
			PA	PA	PA	PA	PA	PA	S	S	S	S	S	S	
			PA	PA	PA	PA	PA	PA	R	R	R	R	R	R	
															



CODE	DIM "M" MATING LENGTH	CONTACT TYPE
PA	[N/A]	POWER
HA	[N/A]	HOLD-DOWN
H	[5.59]	SIGNAL
G	[5.59]	SIGNAL
RL	[7.82]	SIGNAL
SL	[7.82]	SIGNAL

mat'l code				SEE NOTE		tolerances unless otherwise specified		CUSTOMER		FCI	
litr	ecn no.	dr	date	linear		0.X ±0.5		COPY		www.fciconnect.com	
A	DG09-0291	WD	98/03/09			0.XX ±0.25		projection		title 6P + 24S RIGHT ANGLE SOLDER HEADER	
				angles		0.XXX ±0.1				product family PwrBlade	
				dr	Warren Du	08/24/09		MIM		code 213	
				enrg	Warren Du	08/24/09		scale		size dwg no	
				chr	PM ZHENG	08/24/09		1:1		sheet 1 of 4	
				appd	JOSEPH HSIA	08/24/09				A 51732-056	
sheet index	revision sheet	A	A	A	A					cage code 22526	
1	2	3	4							4	

Pro/E

PDM: Rev:A

STATUS:Released

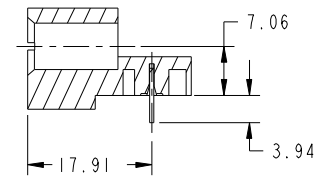
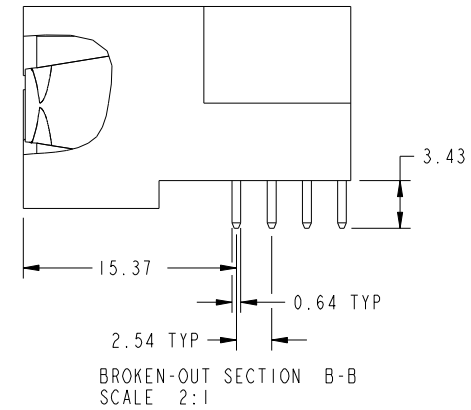
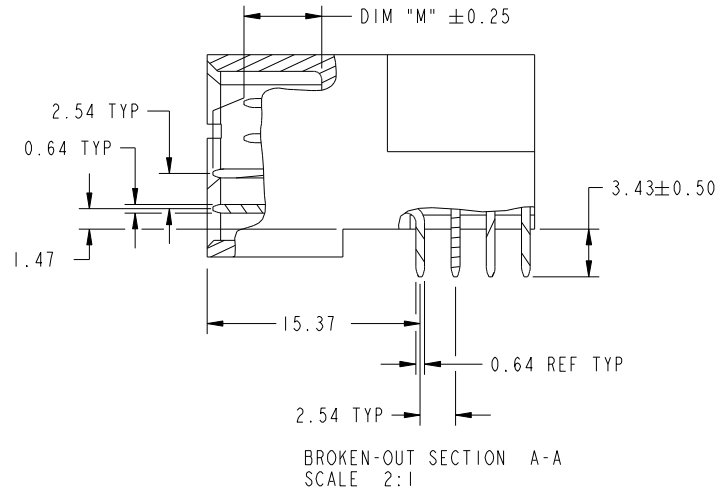
Printed: Dec 20, 2010

Tous droits strictement reserves. Reproduction ou communication a des tiers interdite sous quelque forme que ce soit sans autorisation écrite du propriétaire. Propriete de c FCI. Droits de reproduction FCI.



All rights strictly reserved. Reproduction or issue to third parties in any form whatever is not permitted without written authority from the proprietor. Property of FCI. Copyright FCI.

PRODUCT NUMBER
51732-056_
NOTE: 3



SECTION C-C

mat'l code				SEE NOTE		tolerances unless otherwise specified		CUSTOMER		FCI	
litr	ecn no.	dr	date			linear	0.X ±0.5	COPY		www.fciconnect.com	
A						linear	0.XX ±0.25	projection		title 6P + 24S	
						angles	0.XXX ±0.1			RIGHT ANGLE SOLDER HEADER	
						angles	0° ±2°			product family PwrBlade	
						dr	Warren Du 08/24/09			code	213
						enr	Warren Du 08/24/09			size	213
						chr	PM ZHENG 08/24/09			dwg no	51732-056
						appd	JOSEPH HSIA 08/24/09			sheet	2 of 4
sheet index	revision sheet							scale	1:1	A	

cage code 22526

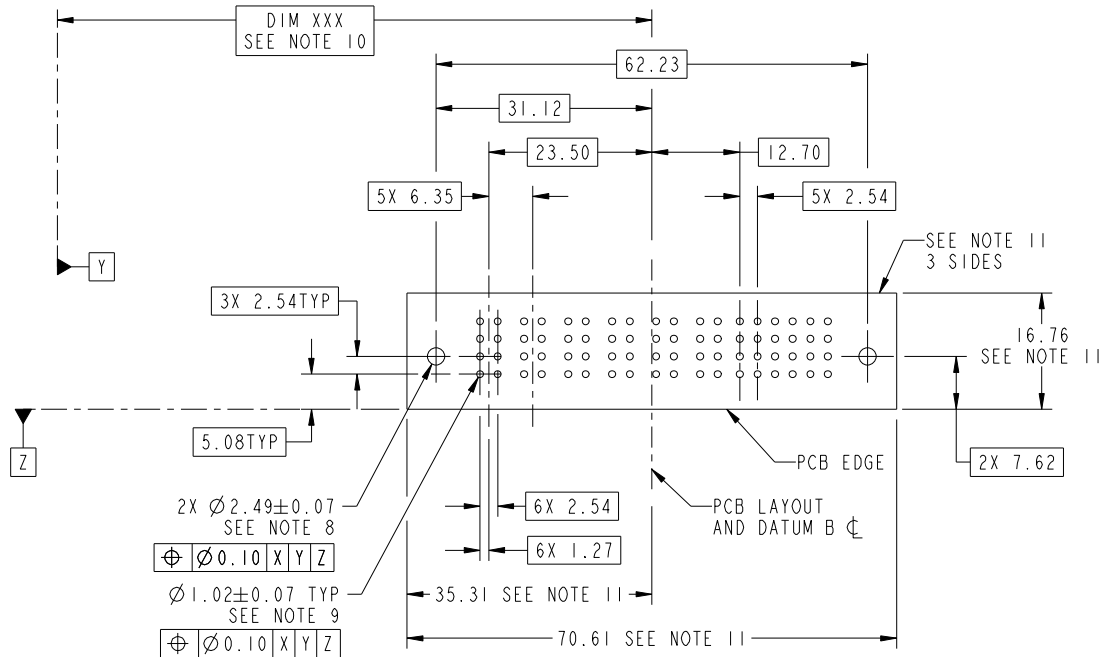
Pro/E

Tous droits strictement reserves. Reproduction ou communication a des tiers interdite sous quelque forme que ce soit sans autorisation écrite du propriétaire. Propriete de c FCI. Droits de reproduction FCI.



All rights strictly reserved. Reproduction or issue to third parties in any form whatever is not permitted without written authority from the proprietor. Property of FCI. Copyright FCI.

PRODUCT NUMBER
51732-056--
NOTE: 3



RECOMMENDED PCB LAYOUT

mat'l code				SEE NOTE		tolerances unless otherwise specified		CUSTOMER		FCI	
ltr	ecn no.	dr	date					COPY		www.fciconnect.com	
A				linear		0.X ±0.5		projection		title 6P + 24S	
						0.XX ±0.25				RIGHT ANGLE SOLDER HEADER	
				angles		0.XXX ±0.1					
						0° ±2°					
				dr	Warren Du	08/24/09		MIM		product family	PwrBlade
				enrg	Warren Du	08/24/09				size	213
				chr	PM ZHENG	08/24/09		scale		dwg no	51732-056
				appd	JOSEPH HSIA	08/24/09		1:1		sheet	3 of 4
sheet index	revision sheet										

cage code 22526

Tous droits strictement reserves. Reproduction ou communication a des tiers interdite sous quelque forme que ce soit sans autorisation ecrite du proprietaire. Propriete de c FCI. Droits de reproduction FCI.



All rights strictly reserved. Reproduction or issue to third parties in any form whatever is not permitted without written authority from the proprietor. Property of FCI. Copyright FCI.

PRODUCT NUMBER
51732-056_- NOTE: 3

NOTES:

1. DIMENSIONS AND TOLERANCES ARE IN ACCORDANCE WITH
ASME Y14.5M, 1994 UNLESS OTHERWISE SPECIFIED.

CONNECTOR NOTES:

2. HOUSING MATERIAL: UL 94 V-0 GLASS FILLED HIGH-TEMP THERMOPLASTIC
POWER CONTACT MATERIAL: COPPER ALLOY
SIGNAL PIN MATERIAL: COPPER ALLOY
3. SEE ITEM 1 & 2 IN PRINT 10064183 FOR PLATING SPEC OF 51732-056 AND 51732-056LF RESPECTIVELY.
4. MANUFACTURER'S NAME, P/N, AND DATE CODE TO APPEAR ON THIS SURFACE.
5. PRODUCT SPECIFICATION GS-12-149.
APPLICATION SPECIFICATION BUS-20-067.
6. PACKAGED IN TRAYS.

PCB NOTES:

7. ALL HOLE DIAMETERS ARE FINISHED HOLE SIZE.
8. MOUNTING HOLES, WHERE APPLICABLE, ARE UNPLATED.
9. $\varnothing 1.151 \pm 0.025$ DRILLED HOLES PLATED WITH
0.008 MIN SnPb OR Sn OVER 0.03
TO 0.08 Cu PLATING TO ACHIEVE
 $\varnothing 1.02 \pm .07$ HOLE.
10. "DIM XXX" TO BE DETERMINED BY THE CUSTOMER.
11. CONNECTOR KEEP-OUT ZONE.

mat'l code				SEE NOTE		tolerances unless otherwise specified		CUSTOMER		FCI	
litr	ecr no.	dr	date					COPY		www.fciconnect.com	
A				linear		$0.X \pm 0.5$		projection		title 6P + 24S	
						$0.XX \pm 0.25$				RIGHT ANGLE SOLDER HEADER	
				angles		$0.XXX \pm 0.1$					
				dr	Warren Du	08/24/09		MIM		product family	PwrBlade
				enrg	Warren Du	08/24/09				size	213
				chr	PM ZHENG	08/24/09		scale		dwg no	51732-056
				appd	JOSEPH HSIA	08/24/09		1:1		sheet	4 of 4
sheet index	revision sheet										

cage code 22526

Mouser Electronics

Authorized Distributor

Click to View Pricing, Inventory, Delivery & Lifecycle Information:

[FCI / Amphenol:](#)

[51732-056LF](#)