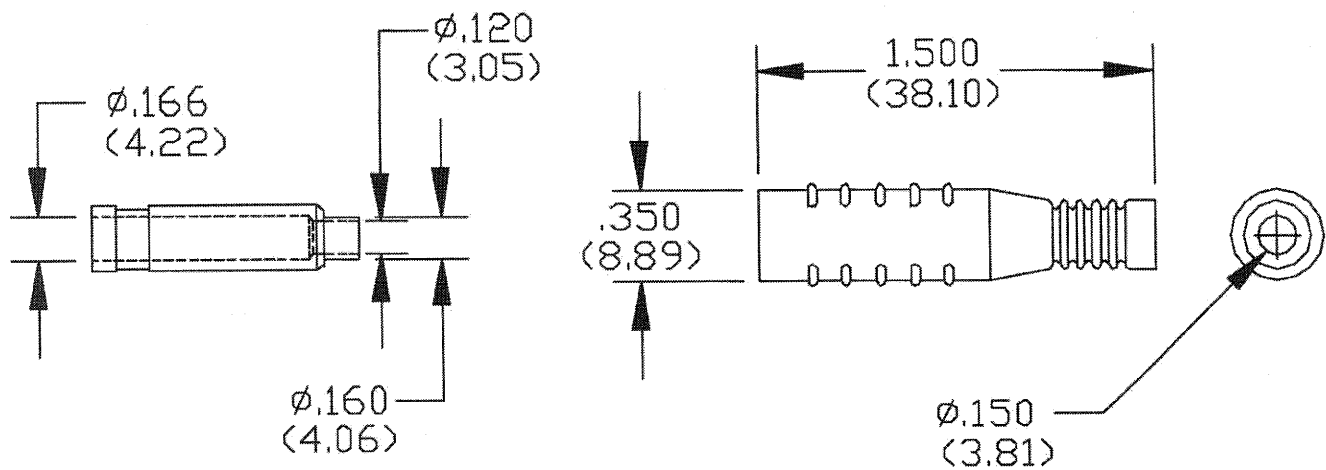


# MUELLER®

**MODEL: BU-P5168-\***

**Banana Jack (In-Line)**



## MATERIALS:

Body – Nickel Plated Brass

Insulator – Flexible PVC. Comes in -0 Black, -2 Red

For use with 14 AWG and 16 AWG wires. Can be soldered or crimped

## RATING:

15 Amps

Hands free testing to 5000 VDC max.

Temperature: -70°C to 50°C

# Mouser Electronics

Authorized Distributor

Click to View Pricing, Inventory, Delivery & Lifecycle Information:

[Mueller Electric:](#)

[BU-P5168-0](#)