

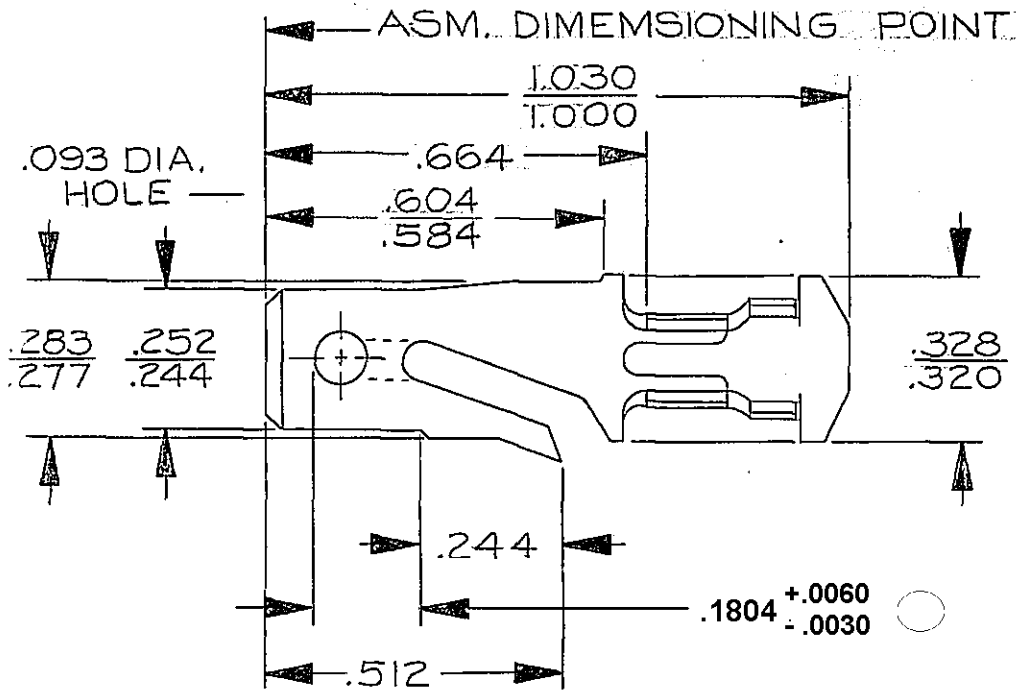
PACKARD ELECTRIC DIVISION
 GENERAL MOTORS CORPORATION
 WARREN, OHIO

0
 19-A
 1146
 ROUTING
 FEB 72
 65-R
 74-R
 76-R
 84-R
 830-R
 850-R
 875-R
 900-R
 952-R
 952-T-R
 1074-R
 PEE-R
 2052-R
 2371-R

DO NOT SCALE

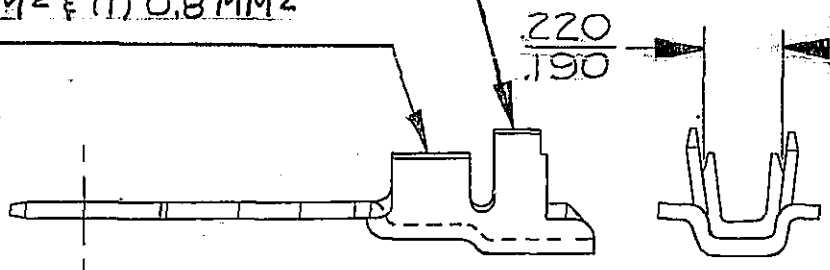
THIS DRAWING AND DESIGN HEREON CONSTITUTES A PROPRIETARY DESIGN OF PACKARD ELECTRIC DIVISION AND IS NOT TO BE DUPLICATED OR REPRODUCED WITHOUT AUTHORITY OF PACKARD ELECTRIC DIVISION.

D



INSULATION WINGS FOR (1) 2.40MM MAX & (1) 3.13 MM MAX. INSULATION DIA. CABLES

CONDUCTOR WINGS FOR (1) 0.8-0.5MM² & (1) 0.8MM² CABLES



C02D2075

PART NO. **891 1677**

DATE	SYM.	REVISION RECORD	C/NNO.	DR.	CK.
04SE79	-	CABLE REVISED TO METRIC	70645	RAP	JJ
08JN82	AZ	REVISION SYMBOL ADV'D	81339	T.C.	Jm
01SE82	-	PICTURE REVISED	82155	T.W.	Jm
01AU83	BA	REV. SYM. ADVANCED	86126	MS	JM
05DE05	BA4	ADDED DIM .1840 +.0060/-.0030 & REMOVED DIM (1 PLC)	274727	CCV	JVM

CODE NO. 6900

TOLERANCE UNLESS OTHERWISE SPECIFIED
 DECIMAL:
 TWO PLACE ± .01
 THREE PLACE ± .005

QC

DWG. DATE 7-24-72 SCALE NONE

DR. *D. W. Sykes*

EST. NO. 101097

CK. *Hubbard*

DATE 7-26-72

REFERENCE NO. "D" 2962864 SH.#1 SIZE

APPR. *J. Stanger*

DATE 7-27-72

MATERIAL SPEC. 0320 THK. SAE CA. 260-BRASS 1/2 HARD-TIN PLATED

NAME TERMINAL-MALE-'56 SERIES

PART NO. **891 1677** SIZE **A**
 OUTLINE DRAWING

Mouser Electronics

Authorized Distributor

Click to View Pricing, Inventory, Delivery & Lifecycle Information:

[Aptiv:](#)

[08911677](#)