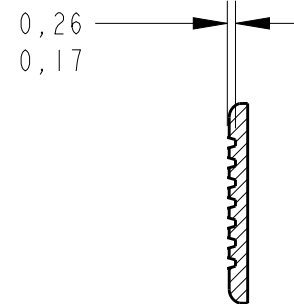
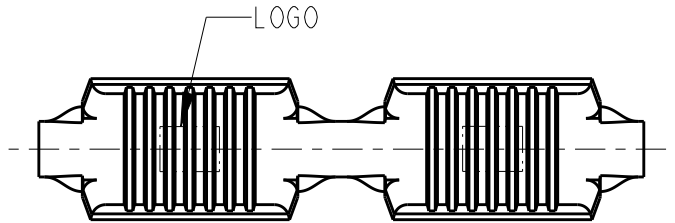


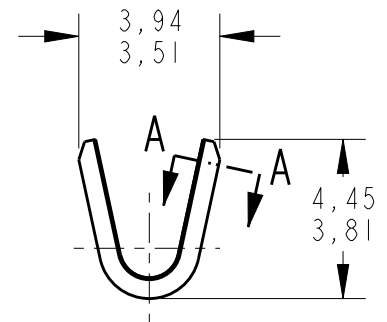
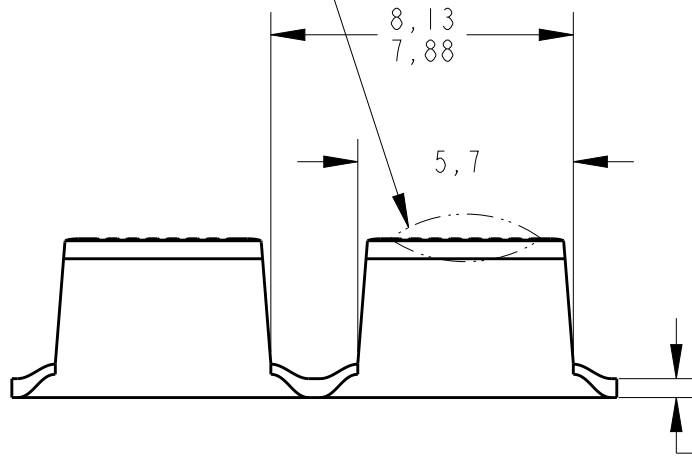
SCALE 2:1

## REVISIONS

P	LTR	DESCRIPTION	DATE	DWN	APVD
	T4	REDRAWN AND REV. BY ECO16-005110	12JULY2016	HC	WLS
	T5	REVISED BY ECO 16-010925	25JULY2016	HC	WLS



SECTION A - A

SMALL DISTORTION  
PERMITTED

- 1 - NOT FOR USE WITH ALUMINUM MAGNET WIRE, USE WITH COPPER MAGNET WIRE ONLY.
- 2 - PACKAGING 20.000 PCS/REEL WITH PAPER INTERLEAVE - 3 REELS/BOX.

WIRE RANGE  
1500-5000 CMA

—	BRASS	1-280002-1	2	1
TIN PLATED	BRASS	280002-2		
—	BRASS	280002-1	1	
FINSIH	MATERIAL	PART NUMBER		

DIMENSIONS:

mm

DWN 21 JAN 2015

H.C. CANTERI

CHK 21 JAN 2015

W.L. STEFANI

APVD

PRODUCT SPEC

APPLICATION SPEC

WEIGHT

MATERIAL

FINISH



TE Connectivity

NAME AMPLIVAR SPLICE

SIZE

CAGE CODE

DRAWING NO

RESTRICTED TO

A4

C-280002

-

CUSTOMER DRAWING

SCALE 5:1

SHEET 1 OF 1

REV T5

RELEASED FOR PUBLICATION

ALL RIGHTS RESERVED.

THIS DRAWING IS UNPUBLISHED.

© COPYRIGHT copyright\_d8Ye-

TOLERANCES UNLESS  
OTHERWISE SPECIFIED:

0 PLC ±-

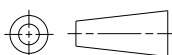
1 PLC ±0,4

2 PLC ±-

3 PLC ±-

4 PLC ±-

ANGLES ±-



# Mouser Electronics

Authorized Distributor

Click to View Pricing, Inventory, Delivery & Lifecycle Information:

[TE Connectivity:](#)

[1-280002-1](#)