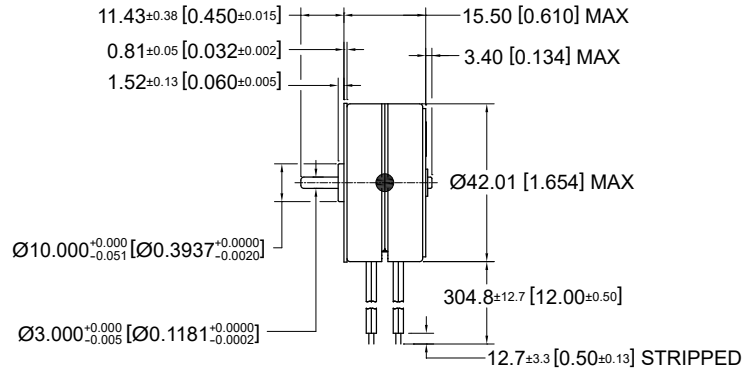
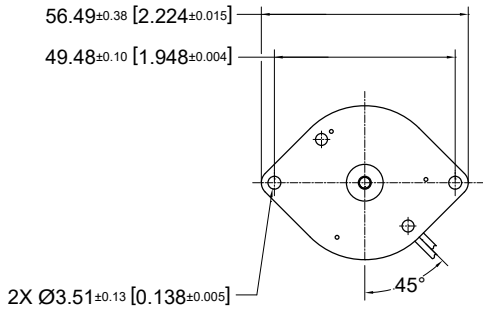


42M100B

Ø 42 mm • RoHS Compliant • 49.4 mNm



Dimensions in mm. [inches]

Electrical Data	42M100B••				Unit
	1U Unipolar	2U Unipolar	1B Bipolar	2B Bipolar	
1 Operating Voltage	5	12	5	12	VDC
2 Resistance per Phase, ± 10%	12.5	75.0	12.5	75.0	Ohms
3 Inductance per Phase, typ	6.6	37.7	11.3	62.1	mH
4 Rated Current per Phase *	0.40	0.16	0.40	0.16	A
<b>Coil Independent Parameters</b>					
5 Holding Torque, MIN *	45.2 (6.4)	45.2 (6.4)	49.4 (7)	49.4 (7)	mNm (oz-in)
6 Detent Torque, Max	5 (0.7)				mNm (oz-in)
7 Rotor Inertia	11.8 (0.065)				gcm <sup>2</sup> (oz-in <sup>2</sup> )
8 Step Angle	3.6				Degree
9 Absolute accuracy 2 ph. On, Full step	± 0.5				Degree
10 Steps per Revolution	100.0				
11 Ambient Temp Range (operating)	-20 to +70 (-4 to +158)				°C (°F)
12 Maximum Coil Temperature	130 (266)				°C (°F)
13 Bearing Type	Sintered Bronze Sleeve				
14 Insulation Resistance at 500 VDC	100.0				Mohms
15 Dielectric Withstanding Voltage	650 VRMS for 2 seconds				VAC
16 Weight	87.89 (3.1)				g (oz)
17 Leadwire	AWG #28, UL3265 (125° C, 150 V)				

Note: All motor data values at 20° C unless otherwise specified

\* Engergize at rated current, 2-Phase On

