

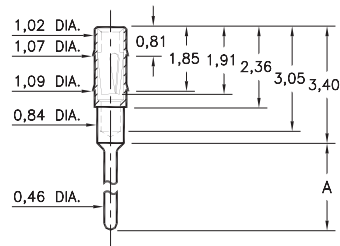
PIN RECEPTACLES

**FOR 0,38 - 0,51 DIAMETER PINS (#11 CONTACT)
AND 0,38 - 0,56 DIAMETER PINS (#05 & #21 CONTACTS)
(SEE SPECIFIC CONTACT RANGE ON PAGE 251)**

0489

0489-X-15-XX-11-XX-04-0

Press-fit in 1,04 mounting hole



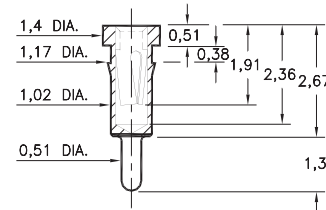
Basic Part Number	Length A
0489-0	2,59
0489-1	5,05
0489-2	7,59

0463

0463-0-15-XX-21-XX-04-0

Press-fit in 1,09 mounting hole.

Shell is Phosphor Bronze Alloy 544 (B2)

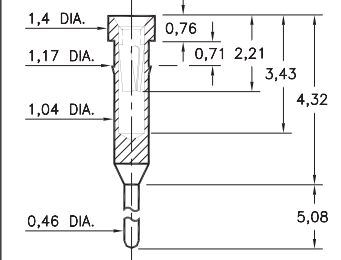


0466

0466-0-15-XX-21-XX-04-0

Press-fit in 1,09 mounting hole.

Shell is Phosphor Bronze Alloy 544 (B2)

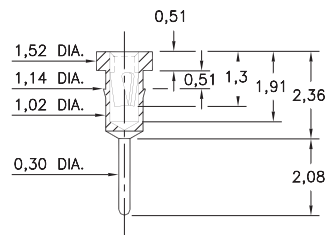


7491

7491-0-15-XX-09-XX-04-0

Press-fit in 1,07 mounting hole

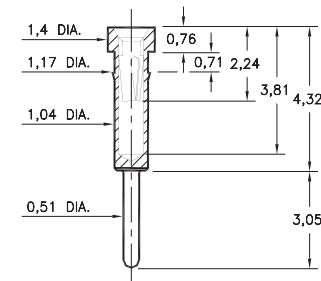
*Contact substitution not recommended



0462

0462-0-15-XX-X1-XX-04-0

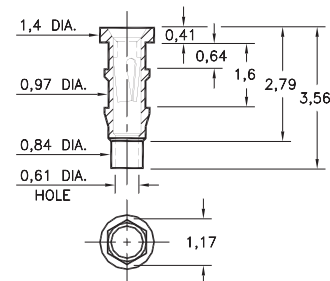
Press-fit in 1,09 mounting hole



0560

0560-0-15-XX-11-XX-10-0

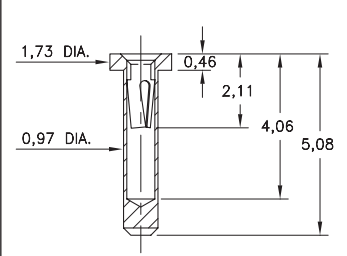
Hex press-fit in 1,09 plated through-hole



5552

5552-0-15-XX-05-XX-10-0

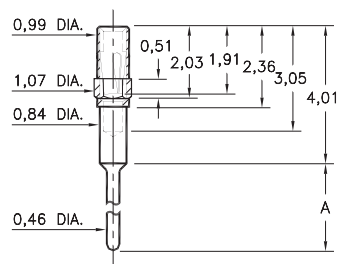
Solder mount in 1,02 min. mounting hole



4890

4890-X-15-XX-11-XX-04-0

Octagonal press-fit in 1,04 mounting hole

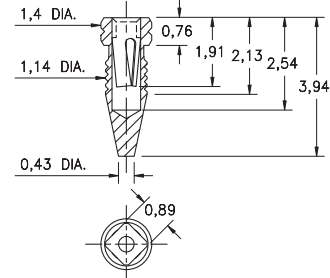


Basic Part Number	Length A
4890-0	2,59
4890-1	5,05
4890-2	7,59

4994

4994-0-15-15-11-27-10-0

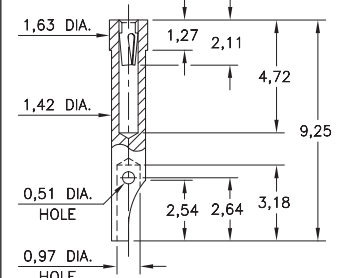
Compliant press-fit in 1,04 - 1,12 dia. mounting hole



4485

4485-0-51-XX-21-XX-10-0

Solder mount in 1,5 min. mounting hole
For wire sizes up to 22 AWG



SPECIFICATIONS:

Shell Material: Brass Alloy 360, 1/2 Hard

Contact Material: Beryllium Copper Alloy 172, HT

Dimensions: Millimeters

Tolerances On: Lengths: ± 0,13

Diameters: ± 0,051

Angles: ± 2°



ORDER CODE: XXXX - X - XX - XX - XX - XX - XX - 0

BASIC PART #

SPECIFY SHELL FINISH:

- 01 5,08µm TIN/LEAD OVER NICKEL
- ◆ 80 5,08µm TIN OVER NICKEL (RoHS)
- ◆ 15 0,25µm GOLD OVER NICKEL (RoHS)

SPECIFY CONTACT FINISH:

- 02 2,54µm TIN/LEAD OVER NICKEL
- ◆ 84 2,54µm TIN OVER NICKEL (RoHS)
- ◆ 27 0,76µm GOLD OVER NICKEL (RoHS)

SELECT CONTACT:

#05, #11 or #21 CONTACT (DATA ON PAGE 251)

(For alternate contact choices, see group A on page 248)



Mouser Electronics

Authorized Distributor

Click to View Pricing, Inventory, Delivery & Lifecycle Information:

[Mill-Max:](#)

[0489-0-15-15-11-27-04-0](#) [0560-0-15-15-11-27-10-0](#) [0560-0-15-15-11-14-10-0](#) [0560-0-15-15-05-27-10-0](#)