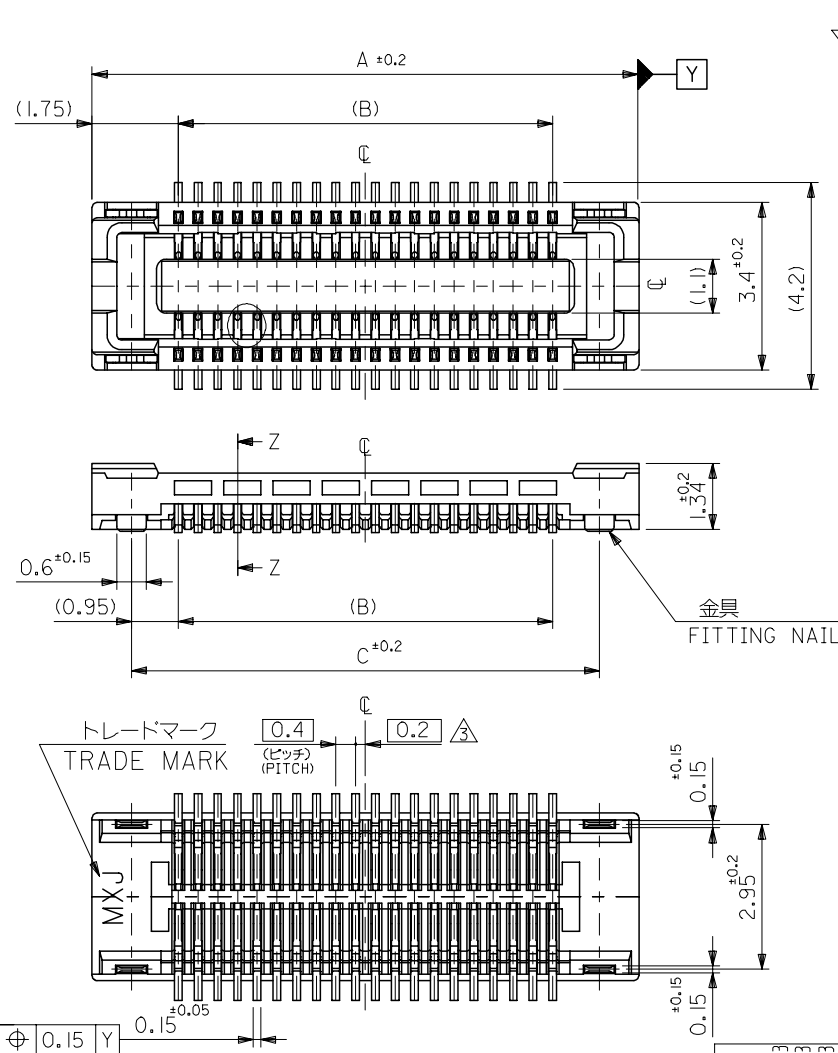


注記 NOTES:

1. 使用材料 MATERIAL
ハウジング: 液晶ポリマー (LCP) ガラス充填
UL94V-0 (黒)
HOUSING: LIQUID CRYSTAL POLYMER (GLASS FILLED)
UL94V-0 (COLOR: BLACK)
ターミナル: リン青銅 (t=0.15)
TERMINAL: PHOSPHOR BRONZE (t=0.15)
金具: リン青銅 (t=0.15)
FITTING NAIL: PHOSPHOR BRONZE (t=0.15)
2. メッキ仕様 PLATING
ターミナル TERMINAL
金メッキ 0.2マイクロメートル以上 (コンタクト部)
GOLD 0.2MICROMETER MINIMUM (CONTACT AREA)
金メッキ 0.4マイクロメートル以下 (テール部)
GOLD 0.4MICROMETER MAXIMUM (TAIL AREA)
下地メッキ: ニッケルメッキ 1.5マイクロメートル以上
*コンタクト部とテール部はニッケルメッキによって分断されている
金メッキです。
UNDER PLATING: NICKEL 1.5MICROMETER MINIMUM
DIVIDE INTO PARTS THE GOLD PLATING OF THE CONTACT
AND THE TAIL PART BY THE NICKEL PLATING.
金具 FITTING NAIL
錫メッキ 1.0マイクロメートル以上
TIN PLATING 1.0MICROMETER MINIMUM
下地メッキ: ニッケルメッキ 1.0マイクロメートル以上
UNDER PLATING: NICKEL 1.0MICROMETER MINIMUM
- △ (全極数/2) = 偶数の場合に適用。
APPLY FOR (CIRCUIT/2)=EVEN.
4. 嵌合相手: 55909シリーズ
MATE WITH: 55909 SERIES.

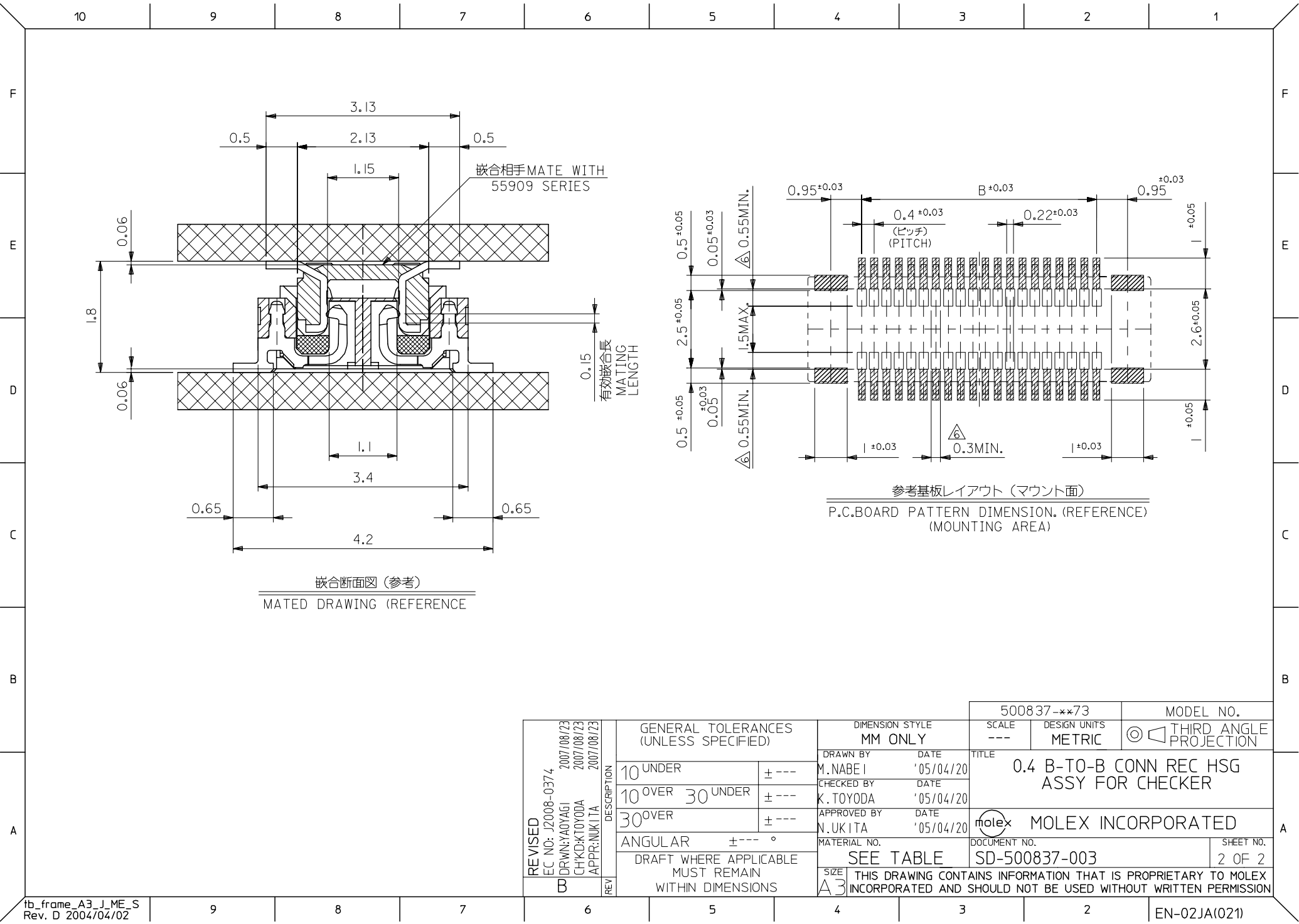
17.5	15.6	19.1	500837-0873	80
15.5	13.6	17.1	500837-0773	70
13.5	11.6	15.1	500837-0673	60
11.5	9.6	13.1	500837-0573	50
9.5	7.6	11.1	500837-0473	40
8.3	6.4	9.9	500837-3473	34
7.5	5.6	9.1	500837-0373	30
5.9	4.0	7.5	500837-2273	22
5.5	3.6	7.1	500837-0273	20
3.9	2.0	5.5	500837-9973	12
C	B	A	MATERIAL No.	CKT.

500837-xx73		MODEL NO.	
SCALE ---	DESIGN UNITS METRIC	THIRD ANGLE PROJECTION	
DRAWN BY M. NABE I		DATE '05/04/20	
CHECKED BY K. TOYODA		DATE '05/04/20	
APPROVED BY N. UKITA		DATE '05/04/20	
MATERIAL NO.		DOCUMENT NO.	
SIZE A3		SHEET NO. 1 OF 2	




5. テール平坦度は、0.08以下
テール及び金具の平坦度は、0.1以下
TAIL COPLANARITY TO BE 0.08MAXIMUM
TAIL AND FITTING NAIL COPLANARITY TO BE 0.1MAXIMUM
△ 同一回路以外のパターン書込み禁止範囲を示す。
NO PRINT CIRCUIT AREA OTHER THAN THE SAME CIRCUIT.
7. ELV及びRoHS適合品。
ELV AND RoHS COMPLIANT.

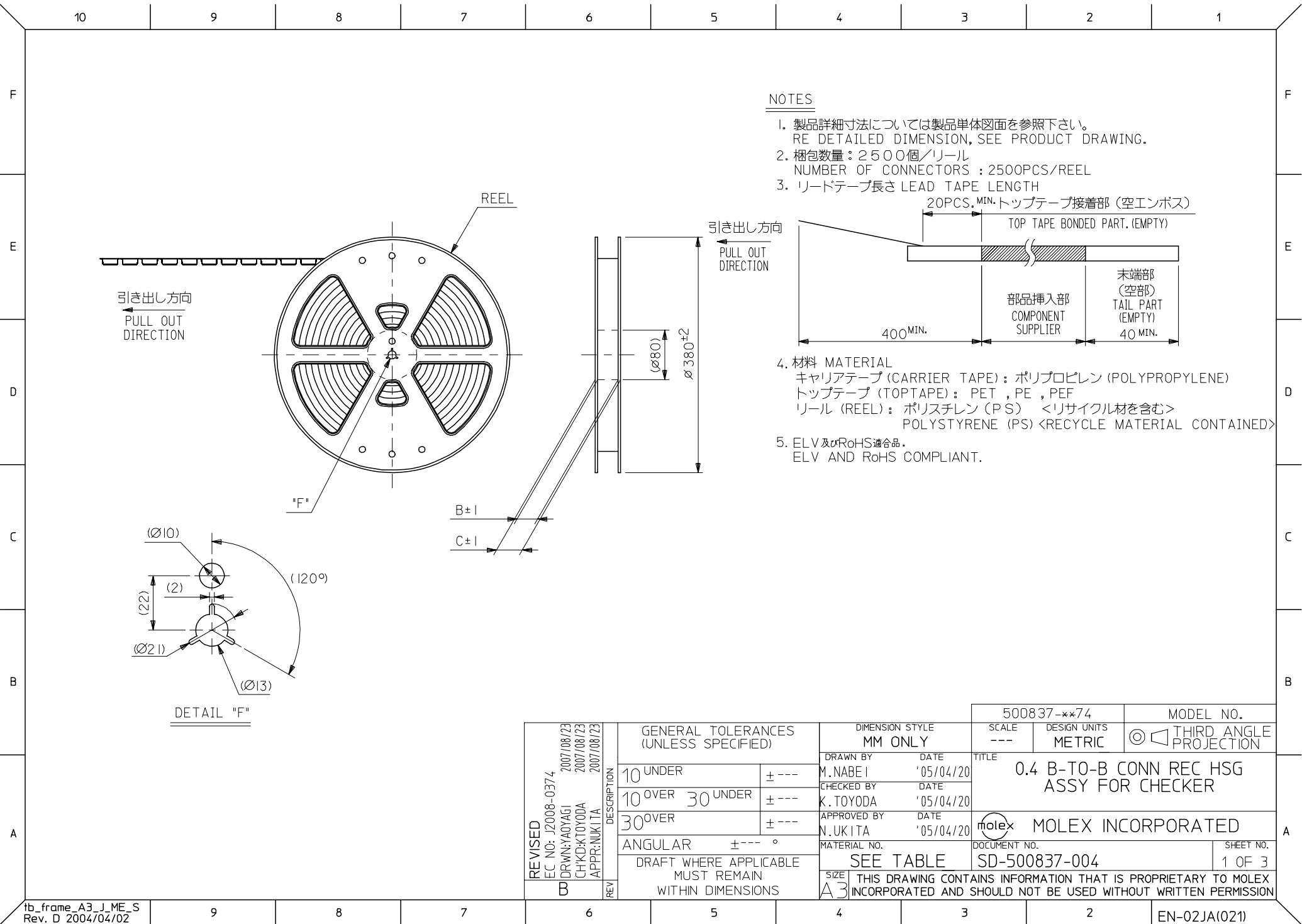
GENERAL TOLERANCES (UNLESS SPECIFIED)		DIMENSION STYLE MM ONLY	
10 UNDER	± ---	DRAWN BY M. NABE I	DATE '05/04/20
10 OVER 30 UNDER	± ---	CHECKED BY K. TOYODA	DATE '05/04/20
30 OVER	± ---	APPROVED BY N. UKITA	DATE '05/04/20
ANGULAR	± --- °	MATERIAL NO.	
DRAFT WHERE APPLICABLE MUST REMAIN WITHIN DIMENSIONS		SEE TABLE	
REVISED EC NO: J2008-0374 DRWN: AYOYAGI CHKD: TOYODA APPR: NUKITA		THIS DRAWING CONTAINS INFORMATION THAT IS PROPRIETARY TO MOLEX INCORPORATED AND SHOULD NOT BE USED WITHOUT WRITTEN PERMISSION	



嵌合断面図 (参考)
MATED DRAWING (REFERENCE)

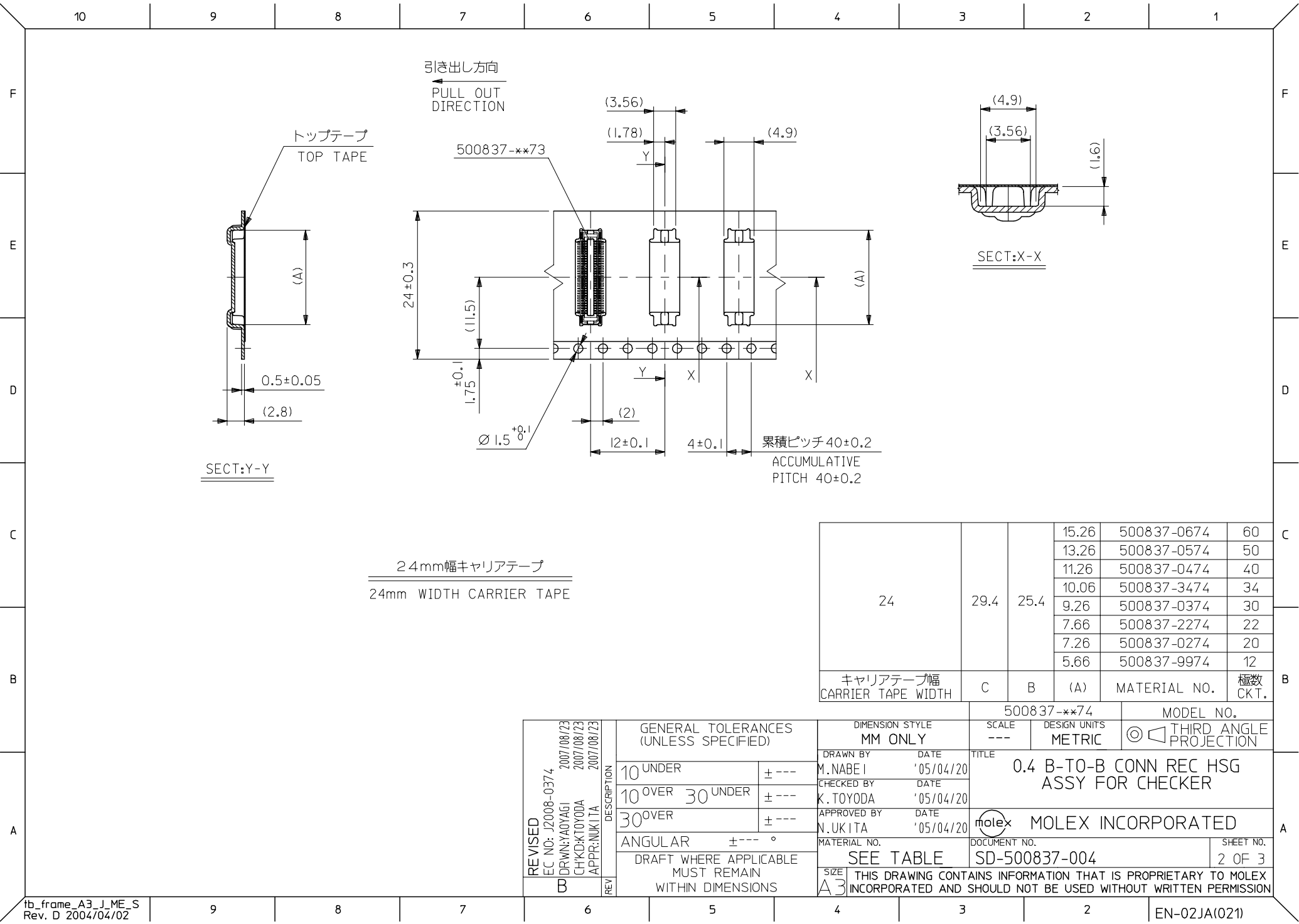
参考基板レイアウト (マウント面)
P.C. BOARD PATTERN DIMENSION (REFERENCE)
(MOUNTING AREA)

REVISED EC NO: J2008-0374 B	2007/08/23 2007/08/23 2007/08/23	DRWN:YA0YAGI CHKD:KTOYODA APPR:NUKITA	DESCRIPTION REV	GENERAL TOLERANCES (UNLESS SPECIFIED)		DIMENSION STYLE MM ONLY		SCALE ---	DESIGN UNITS METRIC	 THIRD ANGLE PROJECTION			
				10 UNDER	± ---	DRAWN BY M.NABEI	DATE '05/04/20	TITLE 0.4 B-TO-B CONN REC HSG ASSY FOR CHECKER					
				10 OVER 30 UNDER	± ---	CHECKED BY K.TOYODA	DATE '05/04/20						
				30 OVER	± ---	APPROVED BY N.UKITA	DATE '05/04/20	MOLEX INCORPORATED					
				ANGULAR	± --- °	MATERIAL NO.					DOCUMENT NO.		SHEET NO.
				DRAFT WHERE APPLICABLE MUST REMAIN WITHIN DIMENSIONS		SEE TABLE		SD-500837-003			2 OF 2		
						SIZE A3	THIS DRAWING CONTAINS INFORMATION THAT IS PROPRIETARY TO MOLEX INCORPORATED AND SHOULD NOT BE USED WITHOUT WRITTEN PERMISSION						




NOTES

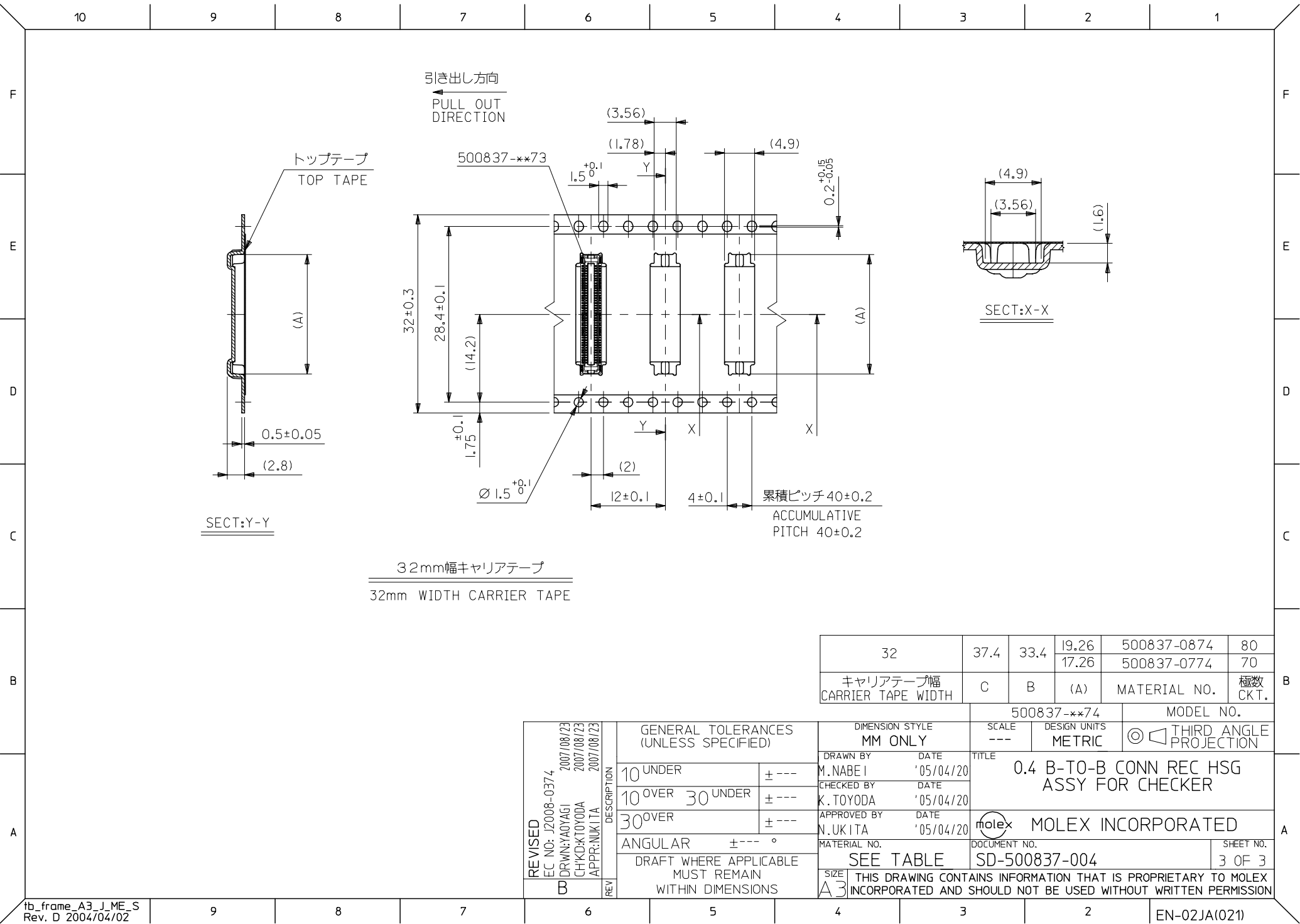
1. 製品詳細寸法については製品単体図面を参照下さい。
RE DETAILED DIMENSION, SEE PRODUCT DRAWING.
2. 梱包数量：2500個／リール
NUMBER OF CONNECTORS : 2500PCS/REEL
3. リードテープ長さ LEAD TAPE LENGTH
20PCS. MIN. トップテープ接着部 (空エンボス)
TOP TAPE BONDED PART. (EMPTY)
4. 材料 MATERIAL
キャリアテープ (CARRIER TAPE) : ポリプロピレン (POLYPROPYLENE)
トップテープ (TOPTAPE) : PET , PE , PEF
リール (REEL) : ポリスチレン (PS) <リサイクル材を含む>
POLYSTYRENE (PS) <RECYCLE MATERIAL CONTAINED>
5. ELV及びRoHS適合品。
ELV AND RoHS COMPLIANT.



24mm幅キャリアテープ
24mm WIDTH CARRIER TAPE

24	29.4	25.4	15.26	500837-0674	60
			13.26	500837-0574	50
			11.26	500837-0474	40
			10.06	500837-3474	34
			9.26	500837-0374	30
			7.66	500837-2274	22
			7.26	500837-0274	20
			5.66	500837-9974	12
キャリアテープ幅 CARRIER TAPE WIDTH	C	B	(A)	MATERIAL NO.	極数 CKT.

REVISED EC NO: J2008-0374 DRWN:YA0YAGI CHKD:KTOYODA APPR:NUKITA	2007/08/23 2007/08/23 2007/08/23	DESCRIPTION REV	GENERAL TOLERANCES (UNLESS SPECIFIED)		DIMENSION STYLE		SCALE	DESIGN UNITS	 THIRD ANGLE PROJECTION			
					MM ONLY		---	METRIC				
			10 UNDER	± ---	DRAWN BY M. NABE I	DATE '05/04/20	TITLE 0.4 B-TO-B CONN REC HSG ASSY FOR CHECKER		MOLEX INCORPORATED			
			10 OVER 30 UNDER	± ---	CHECKED BY K. TOYODA	DATE '05/04/20						
			30 OVER	± ---	APPROVED BY N. UKITA	DATE '05/04/20	SEE TABLE		SD-500837-004		SHEET NO. 2 OF 3	
			ANGULAR	± --- °	MATERIAL NO.							
B		DRAFT WHERE APPLICABLE MUST REMAIN WITHIN DIMENSIONS	SIZE A3	THIS DRAWING CONTAINS INFORMATION THAT IS PROPRIETARY TO MOLEX INCORPORATED AND SHOULD NOT BE USED WITHOUT WRITTEN PERMISSION								



Mouser Electronics

Authorized Distributor

Click to View Pricing, Inventory, Delivery & Lifecycle Information:

Molex:

[500837-0274](#) [500837-0374](#)