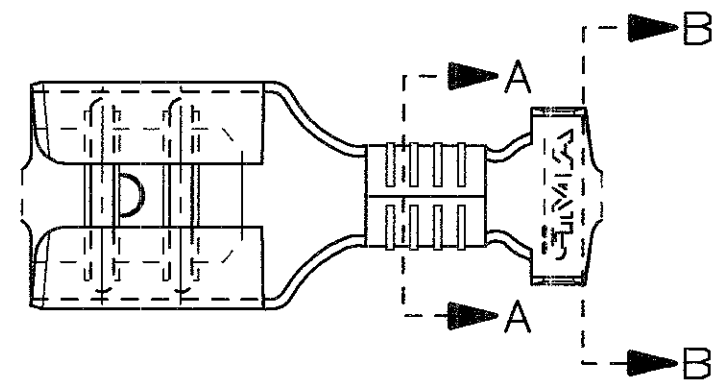
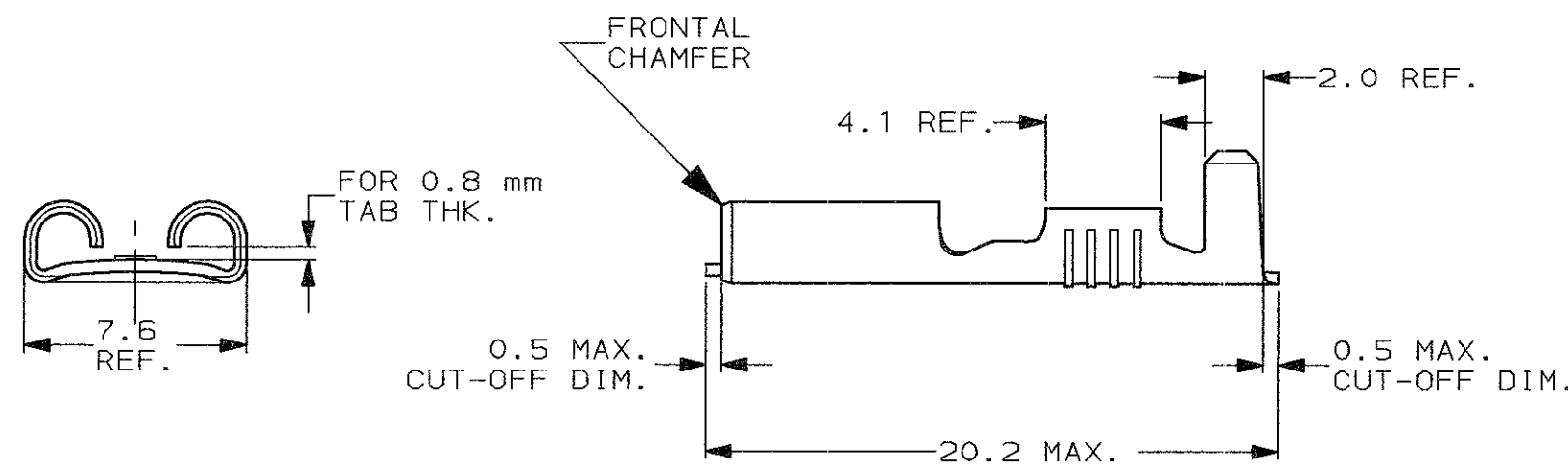


SCALA NON IMPEGNATIVA
(DO NOT SCALE)
DIMENSIONI IN mm
(DIMENSIONS IN)

METRIC



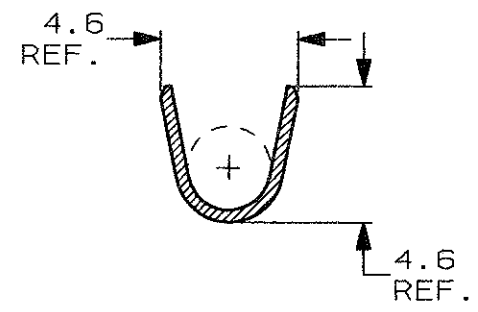
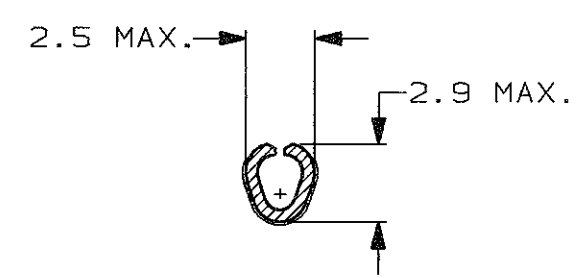
- 1) PER LE VERSIONI IN NASTRO
VEDERE DISEGNO 160432.
(FOR STRIP VERSION SEE DWG. 160432).
- 2) CONFEZIONATO IN ACCORDO ALLA
SPECIFICA AMP 107-20201.
(PACKAGED ACCORDING TO AMP SPEC. 107-20201).



SEZIONE A-A
(SECTION A-A)

SEZIONE B-B
(SECTION B-B)

INSULATION BARREL
NO PREFORMING REQUIRED



STAGNATO (TIN PLATED)	BRONZO FOS. (PHOS. BRONZE)	5-160506-8	J
NUDO (UNPLATED)	BRONZO FOS. (PHOS. BRONZE)	5-160506-7	J
ARGENTATO (SILVER PLATED)	OTTONE (BRASS)	5-160506-5	J
PRE NICHELATO (PRE-NICKEL PL.)	ACCIAIO (STEEL)	5-160506-3	J
STAGNATO (TIN PLATED)	OTTONE (BRASS)	5-160506-2	J
NUDO (UNPLATED)	OTTONE (BRASS)	5-160506-1	J
FINITURA / COLORE (FINISH / COLOUR)	MATERIALE (MATERIAL)	NUMERO (PART NUMBER)	REV

CUSTOMER DWG. FOR REFERENCE ONLY **DISEGNO PER CLIENTE SOLO PER RIFERIMENTO**

~~THIS DRAWING IS UNPUBLISHED~~ RELEASE FOR PUBLICATION

TOLLERANZE, SE NON DIVERSAMENTE SPECIFICATO (TOLERANCES, UNLESS OTHERWISE SPECIFIED)	DIAM. ISOLANTE (INS. DIA. RANGE)	RANGO FILO (WIRE RANGE)	SCALA (SCALE)
± 0.3	2.3-3.3	0.5-1.5	4:1
ANGOLI (ANGLES)	± 2°		



DIS. H. YAALI (DR.) 17 OCT 2000
CONT. C. TARTARI (CHK) 17 OCT 2000

DESCRIZIONE (DESCRIPTION) **FASTON® Connector, .250" sr. REC. CONTACT (LOOSE PIECE VERSION)**

REV.	REVISIONI (REVISION RECORD)	DIS. DATA (DR)	DATA (DATE)
J1	REVISED PER ECO-11-005294	RK	09APR 11

LOC. SIZE NUMERO (DWG NO) **IA3 C-160506**

REV. **J1**

Foglio (Sheet) **1** of **1**

DISTRIBUZIONE (PRINT/DIST.)

Mouser Electronics

Authorized Distributor

Click to View Pricing, Inventory, Delivery & Lifecycle Information:

[TE Connectivity:](#)

[5-160506-3](#)