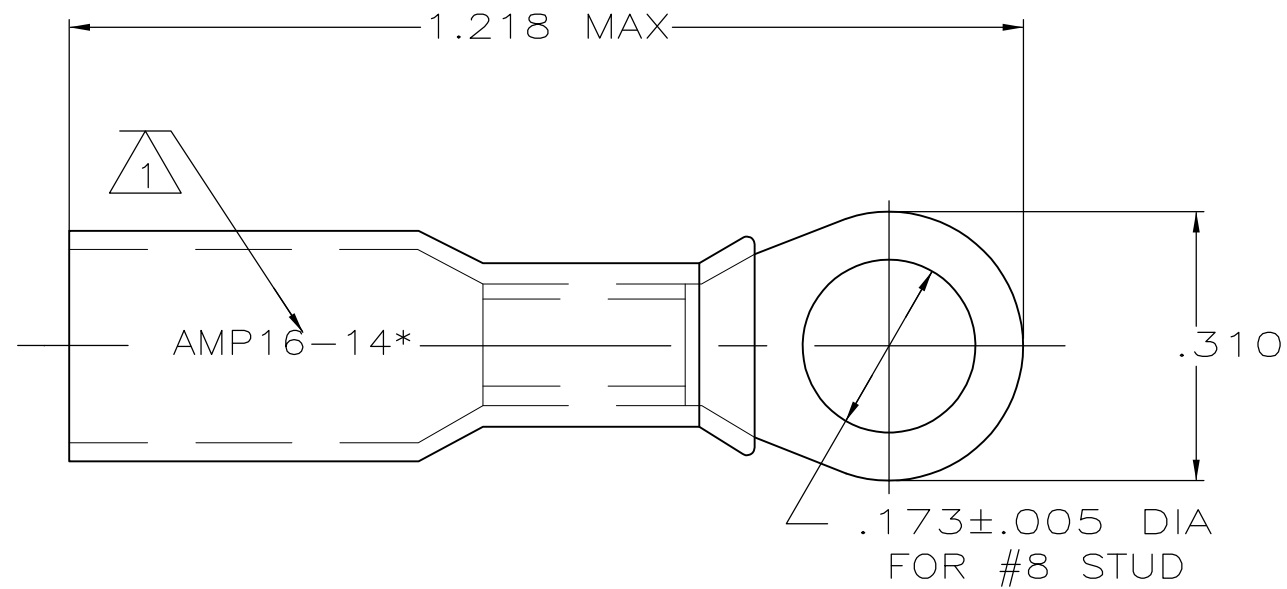
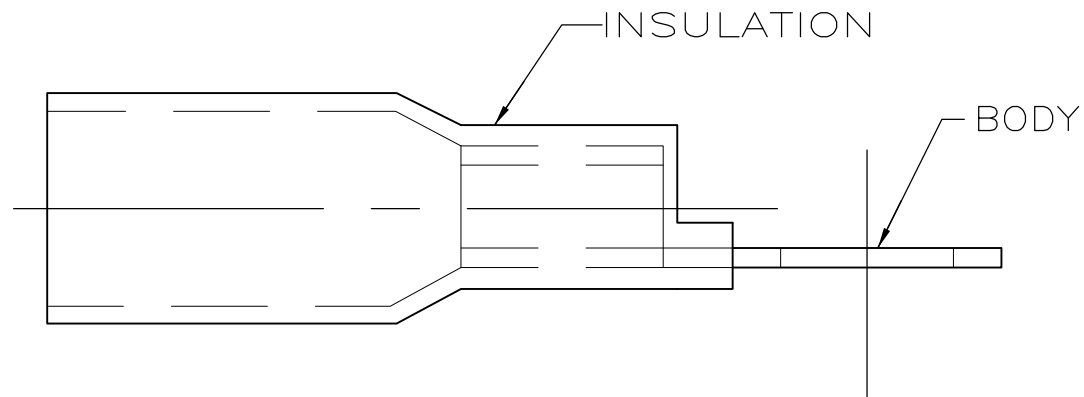


THIS DRAWING IS UNPUBLISHED. RELEASED FOR PUBLICATION  
 © COPYRIGHT BY TYCO ELECTRONICS CORPORATION. ALL INTERNATIONAL RIGHTS RESERVED.

| LOC | DIST | REVISIONS |     |                           |         |     |      |
|-----|------|-----------|-----|---------------------------|---------|-----|------|
|     |      | P         | LTR | DESCRIPTION               | DATE    | DWN | APVD |
| G   | 14   |           | E   | REVISED PER ECR-09-027352 | 17FEB10 | JR  | TM   |



- 1 STAMP AMP 16-14\* APPROX AS SHOWN
- 2 WIRE INSULATION DIA .190 MAX
- 3 TONGUE MATERIAL THK .032±.002
- 4 PRELIMINARY - NOT FOR PRODUCTION



|                          |
|--------------------------|
| <b>AMP</b><br>WIRE RANGE |
| 16-14 AWG<br>STRANDED    |

|      |               |             |
|------|---------------|-------------|
| 2500 | ON TAPE, REEL | 4 2-55851-1 |
| 50   | LOOSE PIECE   | 8-55851-2   |
| 1000 | LOOSE PIECE   | 55851-1     |
| QTY  | PACKAGE TYPE  | PART NO     |

|  |  |   |   |  |                         |  |                 |  |
|--|--|---|---|--|-------------------------|--|-----------------|--|
| <b>AMP INCORPORATED<br/>CUSTOMER SERVICE SYSTEMS</b>                             |  | <b>MAX RECOMMENDED OPERATING TEMPERATURE:</b><br>125° C MAX   | THIS DRAWING IS A CONTROLLED DOCUMENT.                                |  | DWN<br>S S GOULDEN 6/93 | <b>Tyco Electronics</b><br>Tyco Electronics Corporation<br>Harrisburg, PA 17105-3608 |                 |  |
| FOR ADDITIONAL PRODUCT INFORMATION OR COPIES OF DRAWINGS AND TECHNICAL DOCUMENTS | PRODUCT INFORMATION CENTER<br>1-800-522-6752 | <b>VOLTAGE RATING:</b><br>600V MAX (BUILDING WIRING)<br>1000V MAX (FIXTURES & SIGNS)  | DIMENSIONS:<br>INCHES   | TOLERANCES UNLESS OTHERWISE SPECIFIED:   | CHK<br>R HERSEY 6/93    |  |                 | NAME<br>TERMINAL, RING TONGUE, SEALABLE<br>HEAT SHRINKABLE |
| FOR APPLICATION TOOLING INFORMATION  | TOOLING ASSISTANCE CENTER<br>1-800-722-1111  | <b>CIRCULAR MIL AREA:</b><br>1.04-2.62mm <sup>2</sup> [2050-5180]<br>STRANDED   |   | 0 PLC ± -<br>1 PLC ± -<br>2 PLC ± .008<br>3 PLC ± -<br>4 PLC ± -<br>ANGLES ± - | APVD<br>B BARE 6/93     | SIZE<br>A3 00779   |                 |  |
| FOR ORDER ENTRY  | 1-800-526-5142                               | THIS DRAWING IS A CONTROLLED DOCUMENT FOR AMP INCORPORATED. IT IS SUBJECT TO CHANGE AND THE CONTROLLING ENGINEERING ORGANIZATION SHOULD BE CONTACTED FOR THE LATEST REVISION. | MATERIAL<br>BODY: ETP COPPER<br>INSULATION: POLYOLEFIN<br>COLOR: BLUE | FINISH<br>EDP TIN PLATED   | PRODUCT SPEC<br>-       |  |                 | DRAWING NO<br>G-55851                                      |
|  |  |   | CUSTOMER DRAWING  |  | WEIGHT<br>-             | SCALE<br>NTS   | SHEET<br>1 OF 1 | REV<br>E   |

# Mouser Electronics

Authorized Distributor

Click to View Pricing, Inventory, Delivery & Lifecycle Information:

[TE Connectivity:](#)

[8-55851-2](#)