

Board Level Cooling – Channel 7141



BOARD LEVEL COOLING - Channel 7141

Channel 7141 is a narrow channel board level heat sink designed to cool TO-220 and TO-220-single gauge devices. Representative image only.

ORDERING INFORMATION

Part Number	Device Type
7141DG	TO-220, TO-220-single gauge



HEAT SINK DETAILS

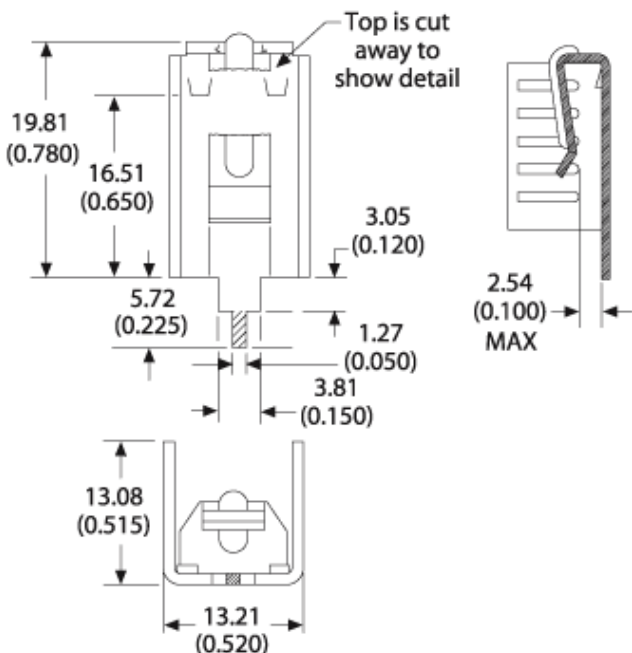
Property	Details
Material	Copper
Finish	Tin Plated
Device Attachment Options	Integrated Mounting Clip
Thermal Interface Material	-

Property	Details
Heat Sink Width (mm)	13.21
Heat Sink Length (mm)	13.08
Heat Sink Height (mm)	19.81
Heat Sink Mounting Direction	Vertical

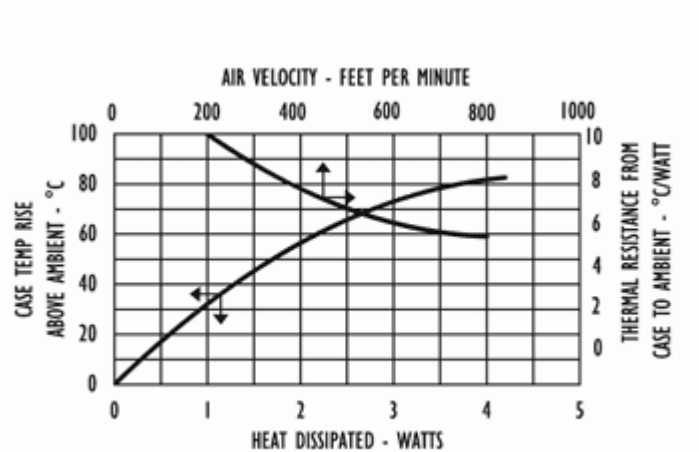
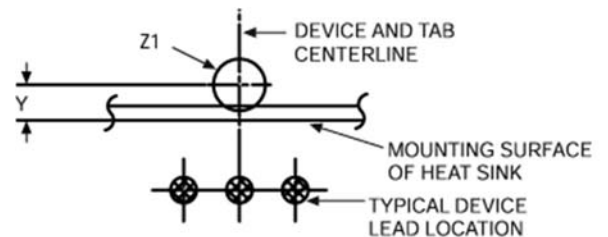
MECHANICAL & PERFORMANCE

Drawing dimensions are shown in mm, (in)

Part Number	"Y" Dim	"Z" Dim
7141DG	0.33 (0.013)	2.77 (0.109)



Mounting Details:



Mouser Electronics

Authorized Distributor

Click to View Pricing, Inventory, Delivery & Lifecycle Information:

[Aavid Thermalloy:](#)

[7141DG](#)