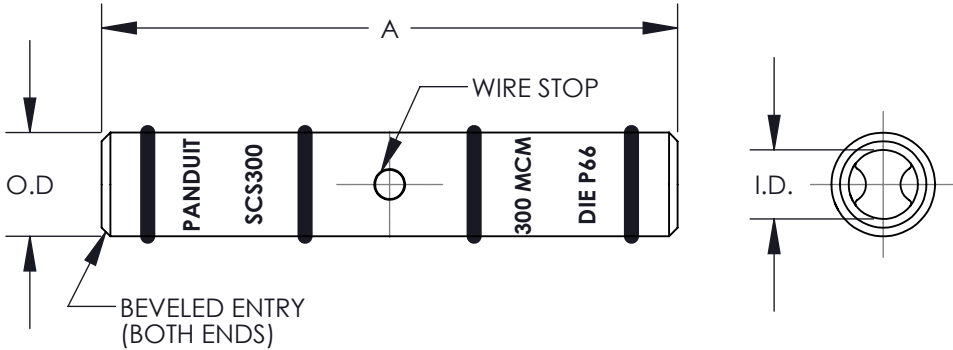


| PANDUIT PART NUMBER | COPPER CONDUCTOR SIZE | EXPANDED WIRE RANGE*** | BARREL | | OVERALL LENGTH "A" +/- .12 | WIRE STRIP LENGTH | PANDUIT CRIMP TOOL PART NUMBERS | | | |
|---------------------------|-----------------------------|------------------------------|---|-----------------|----------------------------------|-------------------------|-----------------------------------|---|--------------------------------------|---|
| | | | I.D. +/- .01 | O.D. +/- .01 | | | CT-720 | CT-920, CT-920CH, CT-930, CT-930CH, CT-940CH*, CT-2920, CT-2940* | CT-2001 | CT-2950**, CT- 2980, CT-980, CT-980CH |
| | | | DIE PART NO./DIE SET COLOR & INDEX NO./NUMBER OF CRIMPS | | | | | | | |
| SCS300-X | 300 kcmil | #2/0 - 300 kcmil | 0.65 | 0.81 | 2.25 | 1-1/16 | CD-720-4 WHITE P66 2 CRIMPS | CD-920-300 WHITE P66 2 CRIMPS | CD-2001-300 WHITE P66 2 CRIMPS | STD 2 CRIMPS |
| SCS350-X | 350 kcmil | #3/0 - 350 kcmil | 0.70 | 0.87 | 2.37 | 1-1/8 | CD-720-5 RED P71 2 CRIMPS | CD-920-350 RED P71 2 CRIMPS | CD-2001-350 RED P71 2 CRIMPS | STD 2 CRIMPS |
| SCS350UP-X | | | | | | | | | | |
| SCS400-6 | 400 kcmil | #4/0 - 400 kcmil | 0.76 | 0.95 | 2.50 | 1-3/16 | CD-720-6 BLUE P76 2 CRIMPS | CD-920-400 BLUE P76 2 CRIMPS | CD-2001-400 BLUE P76 2 CRIMPS | STD 2 CRIMPS |
| SCS400UP-6 | | | | | | | | | | |
| SCS500-6 | 500 kcmil | #4/0 - 500 kcmil | 0.83 | 1.05 | 2.87 | 1-3/8 | CD-720-7 BROWN P87 2 CRIMPS | CD-920-500 BROWN P87 2 CRIMPS | CD-2001-500 BROWN P87 2 CRIMPS | STD 2 CRIMPS |
| SCS500UP-6 | | | | | | | | | | |
| SCS600-6 | 600 kcmil | 250 - 600 kcmil | 0.92 | 1.18 | 2.87 | 1-3/8 | --- | CD-920-600 GREEN P94 2 CRIMPS | --- | STD 2 CRIMPS |
| SCS600UP-6 | | | | | | | | | | |
| SCS750-6 | 750 kcmil | 500 - 750 kcmil | 1.03 | 1.29 | 3.37 | 1-5/8 | --- | CD-920-750 CD-940-750*** BLACK P106 2 CRIMPS | --- | STD 2 CRIMPS |
| SCS750UP-6 | | | | | | | | | | |
| SCS800-6 | 800 kcmil | ---- | 1.05 | 1.35 | 3.37 | 1-7/8 | --- | CD-940-800*** ORANGE P107 2 CRIMPS | --- | ---- |
| SCS1000-3 | 1000 kcmil | ---- | 1.17 | 1.50 | 3.87 | 1-7/8 | --- | CD-940-1000*** WHITE P125 2 CRIMPS | --- | ---- |
| SCS1000UP-3 | | | | | | | | | | |

* CD-920 DIES CAN BE USED WITH CT-940CH AND CT-2940 TOOL WITH CD-940-DA DIE ADAPTER
** MAX SIZE 500 MCM
*** WITH CT-980, CT-980CH, CT-2950 7 CT-2980



- NOTES:
- 1. MATERIAL: HIGH CONDUCTIVITY SEAMLESS COPPER TUBING
 - 2. ELECTRO TIN PLATED
NOTE: SCS350UP, SCS400UP, SCS500UP, SCS600UP, SCS750UP, SCS1000UP ARE NOT PLATED
 - 3. BARREL COLOR CODED WITH DIE SET INDEX NUMBER
NOTE: PLATED PARTS ONLY
 - 4. UL LISTED WITH CODE COPPER CONDUCTORS FOR APPLICATIONS UP TO 35KV, FILE E52164
 - 5. CONSULT CABLE MANUFACTURER FOR VOLTAGE STREE RELIEF INSTRUCTIONS WITH APPLICATIONS GREATER THAN 2000 VOLTS
 - 6. CSA CERTIFIED FOR APPLICATIONS UP TO 600V, FILE LR31212
 - 7. FOR USE WITH COPPER CABLES ONLY



| | | | | | | | | | | |
|-----|-------|------|-----|--|-----------------|-----|-----|--|--|--|
| 08 | 6/13 | JHNU | RGB | ADDED SCS800 TO DRAWING | N41135BB-C41135 | RGB | RGB | <div>PANDUIT CORP. TINLEY PARK, ILLINOIS</div> <div>SCS STANDARD BARREL #300-#1000 SPLICES</div> <div>CUSTOMER DRAWING</div> | | |
| 07 | 6/12 | JHNU | RGB | REMOVED SCS800 FROM DRAWING | N41135BB-C41135 | RGB | RGB | | | |
| 06 | 2/12 | JHNU | RGB | ADDED SCS800 TO DRAWING | N41135BB-C41135 | RGB | RGB | | | |
| 05 | 8/11 | JHNU | RGB | ADDED SCS350UP, SCS400UP, SCS500UP, SCS600UP, SCS750UP, SCS1000UP, CONVERTED DWG TO SOLIDWORKS | N41135BB-C41135 | RGB | RGB | | | |
| 04 | 10/02 | SAC | | REMOVED SCS800-6 | | | | <div>UNLESS OTHERWISE SPECIFIED</div> <div>DIMENSIONAL TOLERANCES ARE:</div> <div>(.X) ± (.XXX) ±</div> <div>(.XX) ± ANGLES ±</div> | | |
| 03 | 6/02 | SAB | JAC | ADDED SCS800-6, UPDATED SCS750-6 & SCS1000-3 TOOL INFO ALL kcmils WERE MCM | 10252 | JAC | LM | | | |
| 02 | 4/01 | BDK | SKB | ADDED LETTER "P" TO DIE INDEX NUMBER, ADDED CT-2980, CT-980, & CT-980CH, EXPANDED WIRE RANGE | 09383 | JAC | RM | <div>DRAWN BY PWS</div> <div>DATE 3/93</div> <div>CHK'D GRM</div> | | |
| 01 | 2/94 | PWS | JCJ | FILESPEC WAS C41105, DWG WAS C41105 | 02060 | LA | RM | | | |
| 00 | 3/93 | PWS | GRM | DRAWING RELEASED | 01415 | | KRS | <div>SCALE NONE</div> <div>DRAWING NO / CAD FILE C41135_08</div> <div>DWG B SIZE</div> | | |
| REV | DATE | BY | CHK | DESCRIPTION | ECN | -R | SUP | | | |

Mouser Electronics

Authorized Distributor

Click to View Pricing, Inventory, Delivery & Lifecycle Information:

Panduit:

[SCS500-6](#) [SCS1000-3](#) [SCS300-X](#) [SCS350-X](#) [SCS400-6](#) [SCS600-6](#) [SCS750-6](#) [SCS800-6](#)