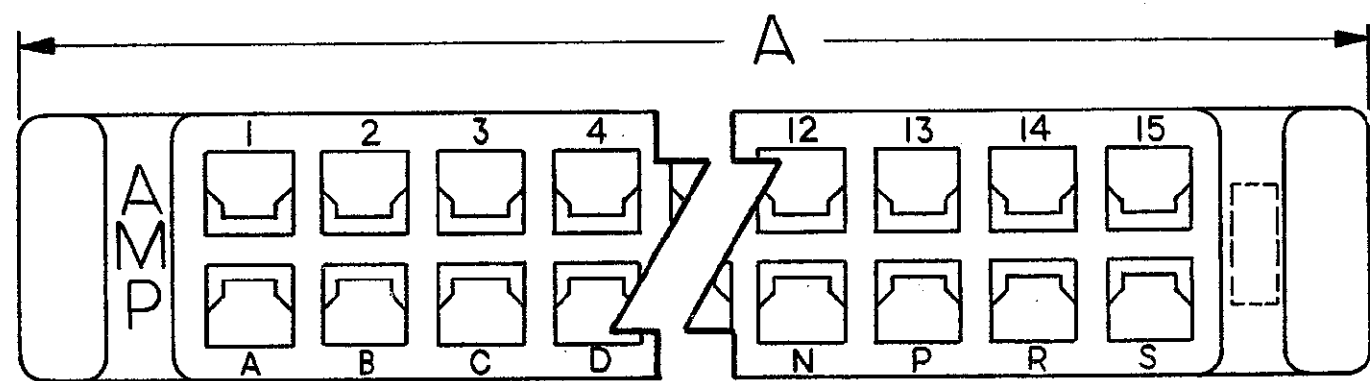
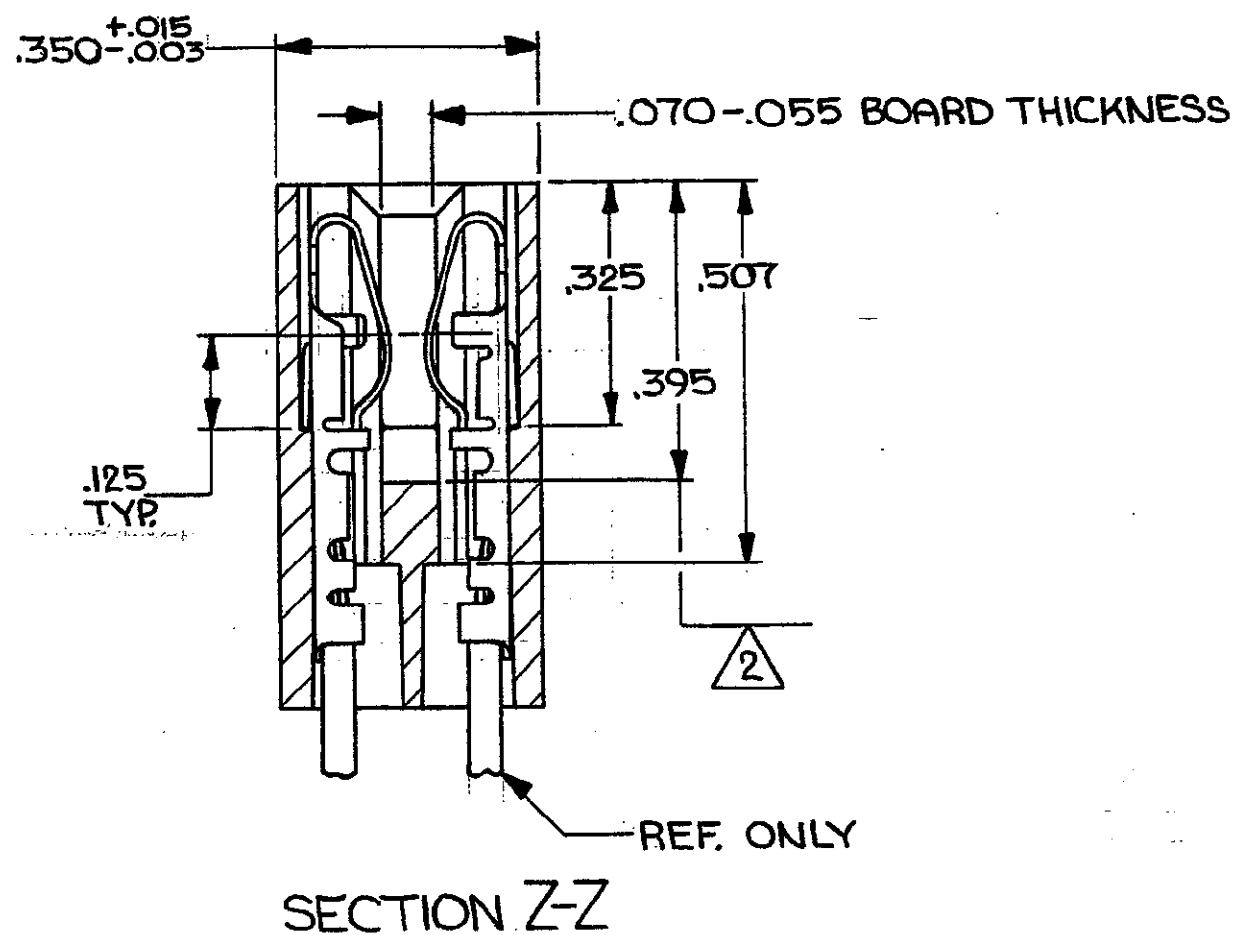
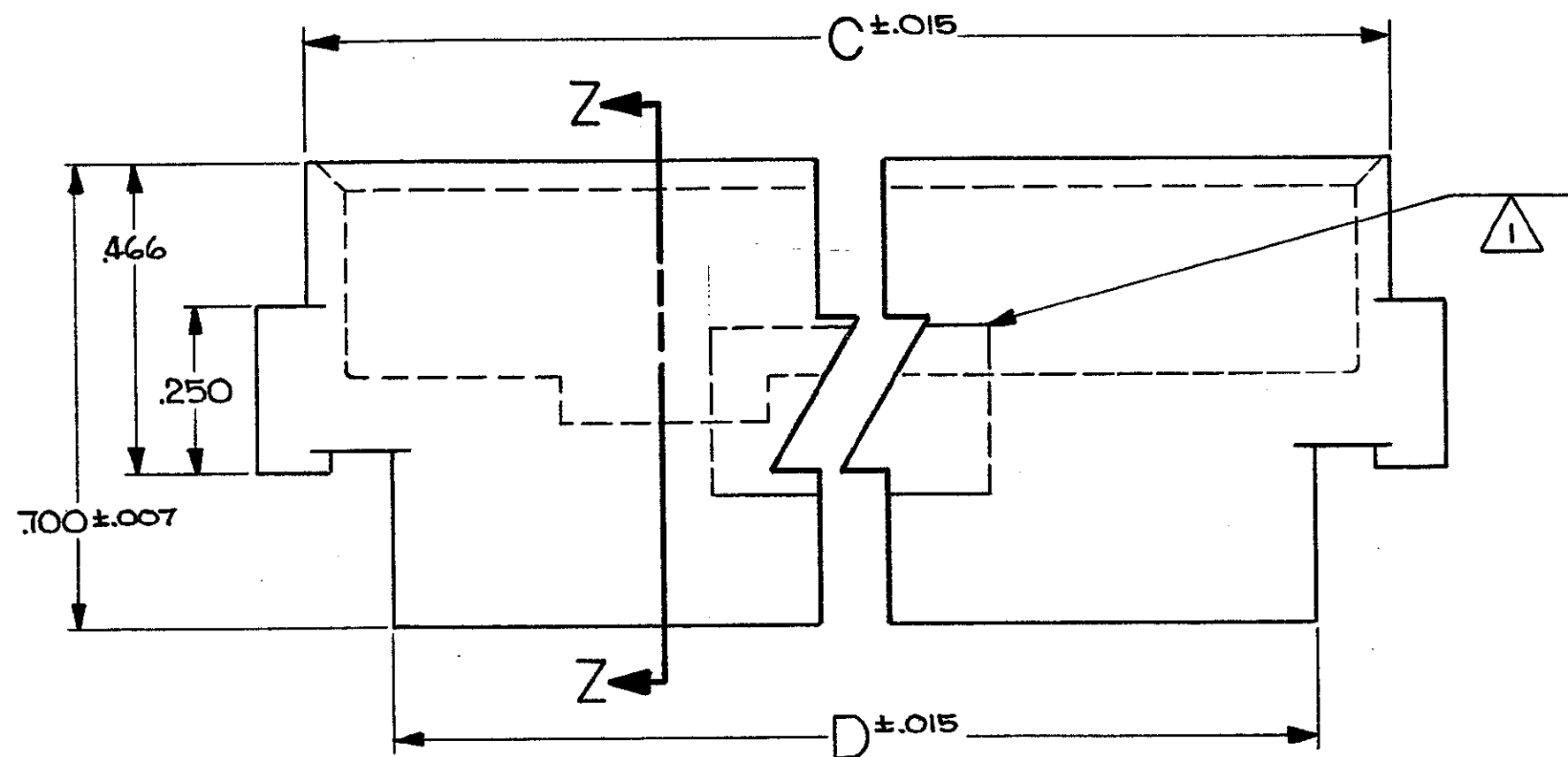
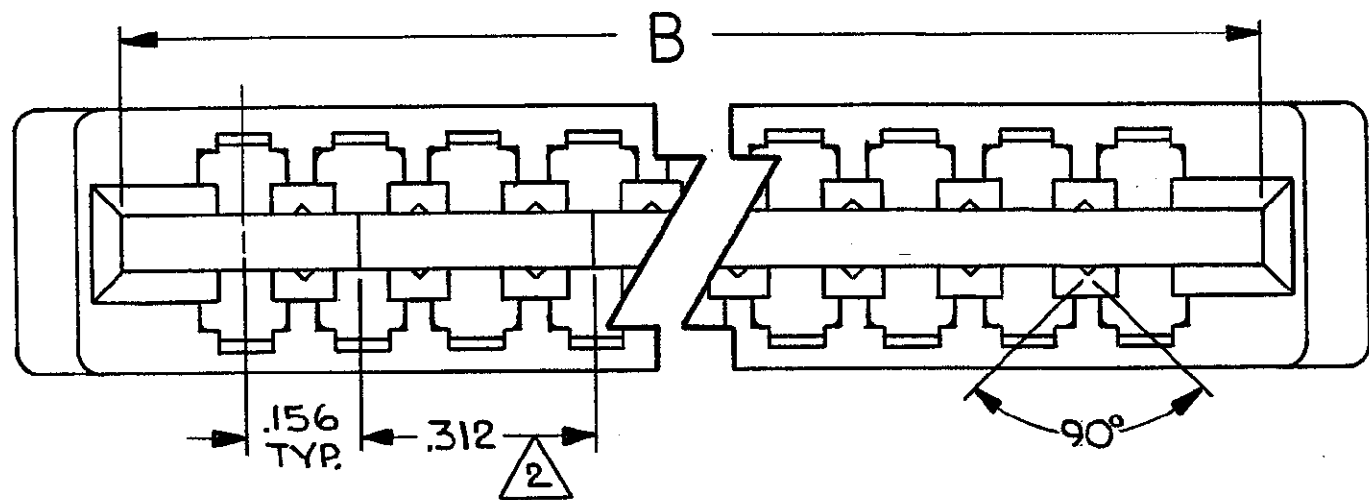


© COPYRIGHT 1980 BY AMP INCORPORATED, HARRISBURG, PA.  
 ALL INTERNATIONAL RIGHTS RESERVED. AMP INCORPORATED PRODUCTS  
 COVERED BY U. S. AND FOREIGN PATENTS AND/OR PATENTS PENDING.

REVISIONS						
P	F	ZONE	LTR	DESCRIPTION	DATE	APPROVED
			0	WAS 5112-426		
01			01	REVISED PER 7239	A.M.S. 3-9-81	
		A		REV PER EC 0320-344-97	25 NOV 97	NS



1 "AMP", PART NUMBER, & DATE CODE THIS AREA.  
 2 THIS AREA IS RECESSED .070 BELOW DEPTH OF CARD SLOT.

UNLESS OTHERWISE SPECIFIED DIMENSIONS ARE IN INCHES. TOLERANCES ON: DECIMALS ±.010 ANGLES ±	531271-2						2.376	2.621	2.506	2.782	15	531271-1
	AS MOLDED P/N	D	C	B	A	NO. OF POS.	PART NO					
MATERIAL FIBERITE 4004 COLOR-BLACK	CONTRACT NO						<b>AMP</b>   AMP INCORPORATED Harrisburg, Pa.					
FINISH //	DR A.M. SHARPE 9-9-80						NAME HOUSING, AMP LEAF, MODIFIED EAR AND CARD SLOT					
	CHK M. Smith 9-10-80						APPD S.E. Shyer 9-12-80					
APPD J. R. Ruelle 9-12-80						DESIGN APPD						
OTHER APPD						SIZE	CODE	IDENT NO	DRAWING NO			
						C	00779	531271				
						SCALE 4:1		SHEET 1 OF 1				

# Mouser Electronics

Authorized Distributor

Click to View Pricing, Inventory, Delivery & Lifecycle Information:

[TE Connectivity:](#)

[531271-1](#)