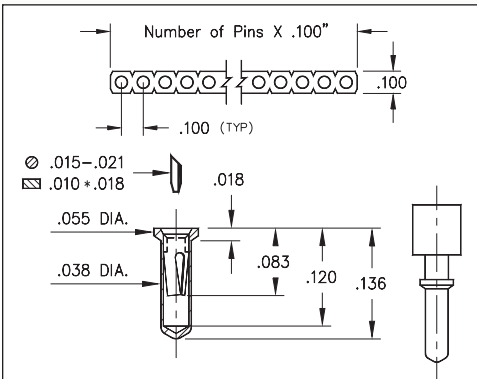
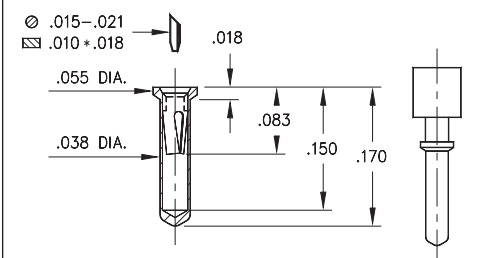


# INTERCONNECTS

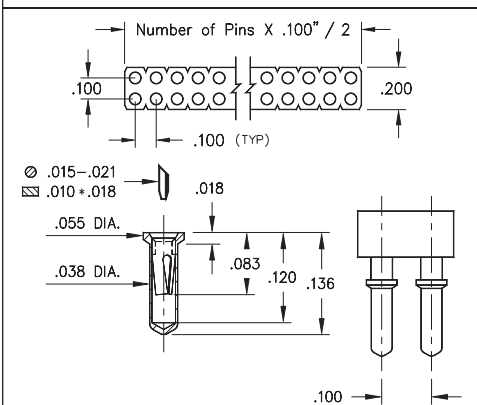
## SERIES 714...01X • .100" GRID ULTRA LOW PROFILE CARRIERS • SINGLE AND DOUBLE ROW STRIPS



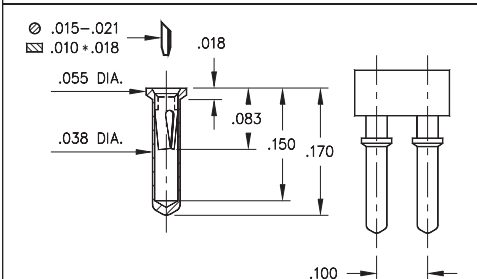
**FIG. 1**



**FIG. 2**

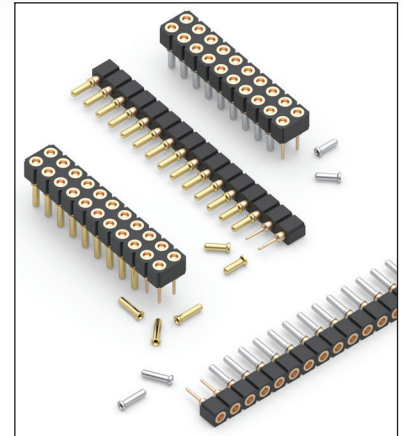


**FIG. 3**



**FIG. 4**

- Ultra low profile receptacles sit .018" above the board
- Series 714 use MM #0552-1 and MM #0552-2 pin receptacles. See page 158 for details
- Hi-Rel, 3-finger BeCu #11 contact is rated at 3 amps. See page 251 for details
- Insulators are high temperature thermoplastic, suitable for all soldering operations





### ORDERING INFORMATION

<b>FIG. 1</b>	<b>Single Row (.039" min. mounting hole)</b>
	714-XX-1__-31-012000 Specify number of pins      01-64
<b>FIG. 2</b>	<b>Single Row (.039" min. mounting hole)</b>
	714-XX-1__-31-018000 Specify number of pins      01-64
<b>FIG. 3</b>	<b>Double Row (.039" min. mounting hole)</b>
	714-XX-2__-31-012000 Specify number of pins      04-64
<b>FIG. 4</b>	<b>Double Row (.039" min. mounting hole)</b>
	714-XX-2__-31-018000 Specify number of pins      04-64



XX=Plating Code  
See Below

For  
Electrical, Mechanical  
& Environmental Data,  
See page 264

<b>SPECIFY PLATING CODE XX=</b>	91	93	41	43
Sleeve (Pin) 	200 μ"Sn/Pb	200 μ"Sn/Pb	200 μ"Sn	200 μ"Sn
Contact (Clip) 	10 μ" Au	30 μ" Au	10 μ" Au	30 μ" Au

# Mouser Electronics

Authorized Distributor

Click to View Pricing, Inventory, Delivery & Lifecycle Information:

## Mill-Max:

[714-93-264-31-018000](#) [714-93-264-31-012000](#) [714-93-132-31-018000](#) [714-93-132-31-012000](#) [714-93-120-31-018000](#) [714-93-120-31-012000](#) [714-93-107-31-012000](#) [714-93-164-31-018000](#) [714-93-164-31-012000](#) [714-93-103-31-018000](#) [714-43-264-31-018000](#) [714-43-264-31-012000](#) [714-43-164-31-018000](#) [714-43-164-31-012000](#) [714-43-132-31-018000](#) [714-43-132-31-012000](#) [714-43-120-31-018000](#) [714-43-120-31-012000](#) [714-43-214-31-018000](#) [714-43-206-31-018000](#) [714-43-146-31-018000](#) [714-43-234-31-018000](#) [714-43-101-31-018000](#) [714-43-208-31-018000](#) [714-43-114-31-018000](#)