

# SERIES 900 SWITCHES

## DETECTOR SWITCHES - SUB-MINIATURE SMT

TACT SWITCHES

NAVIGATION SWITCHES

PUSHBUTTON SWITCHES

TOGGLE SWITCHES

ROCKER SWITCHES

SLIDE SWITCHES

SNAP-ACTION SWITCHES

DIP SWITCHES

KEYLOCK SWITCHES

ROTARY SWITCHES

DETECTOR SWITCHES

CAP OPTIONS



### FEATURES & BENEFITS

- ▶ Right angle SMT detector switch
- ▶ Tape & reel packaging

### APPLICATIONS/MARKETS

- ▶ Telecommunications
- ▶ Networking
- ▶ Computers/servers
- ▶ Performance audio
- ▶ Instrumentation
- ▶ Low power on/off designs
- ▶ External hard drives and modems

### SPECIFICATIONS

Contact Rating:	100mA @ 50 VDC
Life Expectancy:	50,000 cycles typical
Contact Resistance:	80mΩ max. typical @ 2-4 VDC 100mA
Insulation Resistance:	100MΩ min.
Dielectric Strength:	>1,000 Vrms at sea level
Actuation Force:	50 gf max.
Operating Temperature:	-25°C to +85°C
Travel:	2.0

### MATERIALS

Housing:	4/6 Nylon
Actuator:	6T Nylon
Cover:	Stainless steel
Contacts:	Silver plated phosphor bronze
Terminals:	Silver plated brass
Spring:	Stainless steel

### HOW TO ORDER

SERIES  
**900**

MOUNTING

- A = None
- B = Mounting Tabs

CIRCUIT

- G = Normally Open

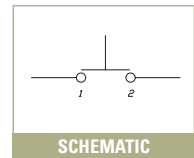
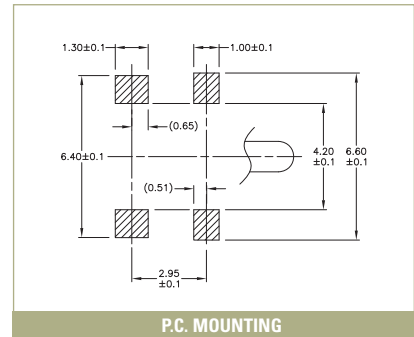
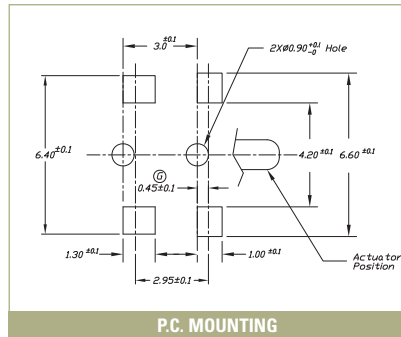
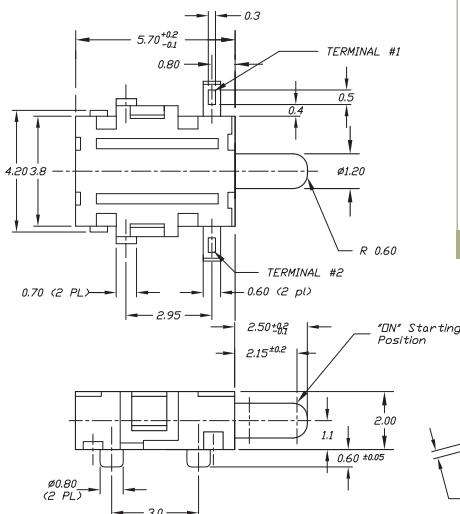
CONTACT MATERIAL

- Q = Silver

▶ ▶ ▶ Example Ordering Number  
**900-A-G-Q**

Specifications subject to change without notice.

## 900 AGQ



# Mouser Electronics

Authorized Distributor

Click to View Pricing, Inventory, Delivery & Lifecycle Information:

[E-Switch:](#)

[900AGQ](#) [900BGQ](#)