

4

3

2

1

THIS DRAWING IS UNPUBLISHED.

RELEASED FOR PUBLICATION

© COPYRIGHT

ALL RIGHTS RESERVED.

LOC

DIST


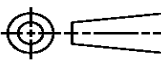
REVISIONS

P	LTR	DESCRIPTION	DATE	DWN	APVD
	A1	ECR-15-007000	06MAY2015	GK	HMR

REPLACED BY OCEAN STYLE APPLICATOR PART
NUMBER 2266723-1

FOR REPLACEMENT PARTS FOR APPLICATOR 1385597
REFER TO ADDITIONAL PAGE(S). SPARE PARTS KIT (IF LISTED)
WILL REMAIN AVAILABLE.

THE REPLACEMENT OCEAN STYLE APPLICATOR HAS THE
SAME TERMINATOR/PRESS INTERFACE AS APPLICATOR
1385597

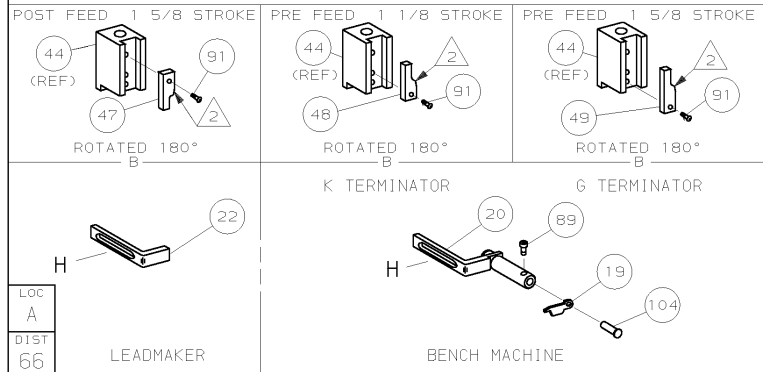
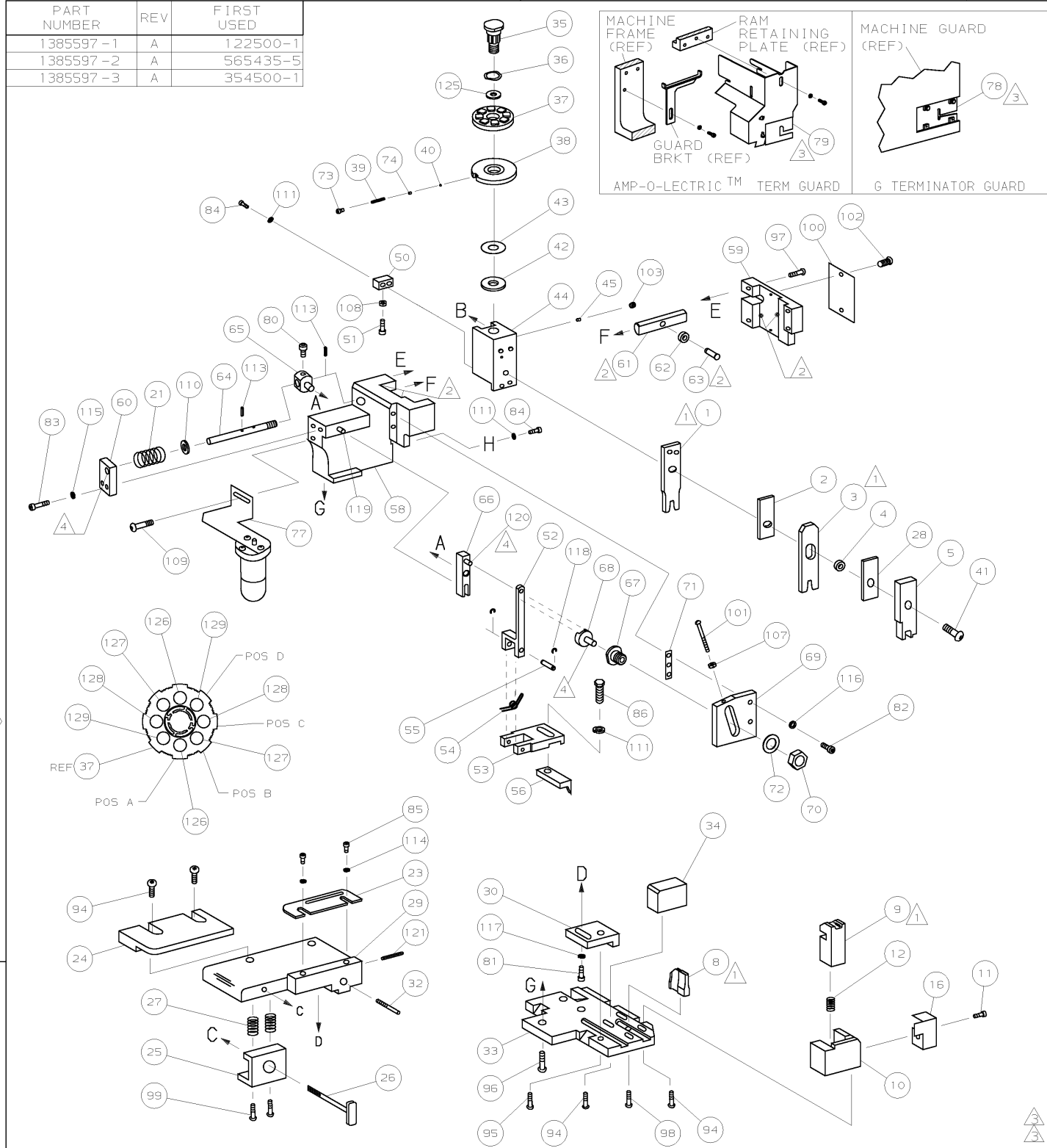
THIS DRAWING IS A CONTROLLED DOCUMENT.		DWN GOPALAKRISHNA HV		 TE Connectivity	
DIMENSIONS:		CHK RAGHAVENDRA			
		TOLERANCES UNLESS OTHERWISE SPECIFIED:		APVD RAGHAVENDRA	
		0 PLC ±		NAME	
		1 PLC ±		SIDE FEED HDM APPLICATOR	
MATERIAL		2 PLC ±		PRODUCT SPEC	
		3 PLC ±		APPLICATION SPEC	
		4 PLC ±		SIZE CAGE CODE DRAWING NO RESTRICTED TO	
FINISH		WEIGHT		C- 1385597	
		CUSTOMER DRAWING		SCALE SHEET 1 OF 2 REV A1	

DRAWING MADE IN THIRD ANGLE PROJECTION

1385597 1385597

/home/us052641

PART NUMBER	REV	FIRST USED
1385597 -1	A	122500-1
1385597 -2	A	565435-5
1385597 -3	A	354500-1



AMP 1756 REV 3-92 14-MAY-03 14:34:48 us052641

TERMINAL NAME: MICRO TIMER MK4 RECEPTACLE									
185158-1		AMP TERMINAL			AMP CRIMP SPECS				
		PAD LTR	CRIMP HEIGHT			WIRE SIZE			
			A .054 ±.002 [1.36 ±0.05mm]			1.0mm ²			
			B .051 ±.002 [1.29 ±0.05mm]			(2) 0.35mm ² or 0.75mm ²			
			C .048 ±.002 [1.22 ±0.05mm]			0.6mm ²			
			D .046 ±.002 [1.18 ±0.05mm]			0.5mm ²			
		CRIMP		SIZE		TYPE		RANGE	
		WIRE		.080 [2.03mm]		F		1.0mm ² -0.5mm ²	
		INSUL		.110 [2.80mm]		0		1.3-2.0MM	
WIRE STRIP LENGTH		TERM APPL SPEC		FEED		APPL INSTRUCTION		SET UP GAGE LAYOUT	
3.4-4.2mm		NONE		11.0mm		408-8040		458637-1 L2811	

2	2	2	-	C	4-354779-0	PIN, WIRE DISC (.3190)D	129
2	2	2	-	C	3-354779-4	PIN, WIRE DISC (.3160)C	128
2	2	2	-	C	2-354779-8	PIN, WIRE DISC (.3130)B	127
2	2	2	-	C	2-354779-2	PIN, WIRE DISC (.3100)A	126
1	1	1	-	A	986950-1	WASHER, FLAT PRECISION	125
1	1	1	-	A	217238-1	GENERAL INSTRUCTION PACKAGE	124
1	1	1	-	-	4088040	SF APPL INST 408-8040	123
1	1	1	-	-			122
1	1	1	-	A	4-21028-0	PIN,SLT SPR(φ.093x.75)ST GDE PL	121
REF	REF	REF	-	A	1-21030-1	PIN,DOWEL (φ.187x.50)LEVER	120
REF	REF	REF	-	A	1-21030-6	PIN,DOWEL (φ.187x1.25)HOUSING	119
REF	REF	REF	-	A	21045-3	RING,RET "C"(φ.187)FD FING PIN	118
1	1	1	-	A	21024-5	WASHER, LOCK (#10)ADJ BLOCK	117
REF	REF	REF	-	A	21024-5	WASHER,LOCK (#10)ADJ PLATE	116
REF	REF	REF	-	A	21024-5	WASHER,LOCK (#10)FEED GDE ROD	115
2	2	2	-	A	21024-2	WASHER,LOCK (#4)FRONT STP GUIDE	114
REF	REF	REF	-	A	5-21028-1	PIN,SLT SPR(φ.125x.50)ADJ ROD	113
4	4	4	-	A	21024-4	WASHER,LOCK (#8)STRIPPER	112
REF	REF	REF	-	A	21899-4	WASHER,FLAT(φ5/16)SCREW ADJ	110
-	1	-	-	A	2-21002-6	SCR,BHC (10-32x.38) LUBE ASSY	109
1	1	1	-	A	21018-5	NUT, HEX (NO.6)HOLDDOWN	108
REF	REF	REF	-	A	21068-5	NUT,HEX (6-32)FEED ADJ	107
							106
1	1	-	-	A	992031-1	PIN, CLEVIS	104
1	1	1	-	A	21009-2	SCR,SKT SET (1/4-20x.25 LW)RAM	103
2	2	2	-	A	21017-2	SCR,DRIVE (#2x.19) ID PLATE	102
REF	REF	REF	-	A	6-23715-5	SCR,PAN HD (6-32x1.50)FEED ADJ	101
1	1	1	-	B	461264-1	PLATE, IDENTIFICATION	100
2	2	2	-	A	3-21002-0	SCR,BHC (10-32x.88)DRAG	99
1	1	1	-	A	22733-8	SCR,BHC (8-32x.38 LW)ANVIL	98
REF	REF	REF	-	A	2-21002-9	SCR,BHC (10-32x.75)CAP	97
REF	REF	REF	-	A	2-22733-8	SCR,BHC (1/4-20x.62)HOUSING	96
REF	REF	REF	-	A	2-21002-7	SCR,BHC (10-32x.50)56 ADJ BLOCK	95
6	6	6	-	A	2-21002-2	SCR,BHC (8-32x.50)TERM H DWN	94
							93
							92
1	1	1	-	A	1-21002-7	SCR,BHC (6-32x.38)CAM	91
							90
1	1	-	-	A	7-21000-9	SCR,SHC (4-40x.19)STRIPPER	89
							88
							87
1	1	1	-	A	2-22603-0	SCR,HEX HD (8-32x.31)FEED FINGER	86
2	2	2	-	A	1-21000-3	SCR,SHC (4-40x.25)FR ST GUIDE	85
3	3	3	-	A	2-21000-7	SCR,SHC (8-32x.50)STRIPPER	84
REF	REF	REF	-	A	3-21000-7	SCR,SHC (10-32x.75)FEED ROD GD	83
REF	REF	REF	-	A	3-21000-6	SCR,SHC (10-32x.62)FD ADJ BLK	82
1	1	1	-	A	3-21000-4	SCR,SHC (10-32x.38)56 ADJ BL	81
REF	REF	REF	-	A	3-21000-4	SCR,SHC (10-32x.38)PIVOT BLK	80
-	REF	-	-	B	455749-1	GUARD, WINDOW	79
REF	-	-	-	B	679532-1	INSERT, GUARD	78
-	1	-	-	C	1-465184-0	LUBRICATOR ASSY	77
							76
							75
1	1	1	-	A	690603-1	SPRING, ASSIST	74
1	1	1	-	A	23030-1	SCR,SHC (6-32x.25 SL)INS DISC	73
REF	REF	REF	-	A	458109-1	WASHER, SPECIAL	72
REF	REF	REF	-	A	690517-1	SPACER	71

-3	-2	-1	U/M	DWG SIZE	PART NO	DESCRIPTION	ITEM NO
QTY RECD PER ASSY				PARTS LIST			

DIMENSIONS IN INCHES. DO NOT SCALE PRINT. TOLERANCES UNLESS OTHERWISE SPECIFIED: 2 PLC DEC ±.02 3 PLC DEC ±. 4 PLC DEC ±. ANGLES ±. SURF TEXTURE, REMOVE BURRS, BREAK SHARP EDGES R.015 MAX		P/F LTR		PRODUCT RELEASE REVISION RECORD		CMR MAY02 APP DATE	
A		A		A		A	

-1		LEADMAKER			MECH POST FEED		
-2		BENCH MODEL K			MECH PRE FEED		
-3		BENCH MODEL G			MECH PRE FEED		
REF	REF	REF	-	B	22594-8	NUT, HEX (1/2-20)	70
REF	REF	REF	-	B	240628-1	PLATE, ADJUSTMENT	69
REF	REF	REF	-	B	240626-1	SHAFT, PIVOT	68
REF	REF	REF	-	B	240633-1	BUSHING	67
REF	REF	REF	-	A	455680-1	LEVER, INTERMEDIATE	66
REF	REF	REF	-	B	240629-1	BLOCK, PIVOT	65
REF	REF	REF	-	A	240632-2	SCREW, ADJ FEED ROD	64
REF	REF	REF	-	B	240659-3	PIN, CAM ROLLER	63
REF	REF	REF	-	B	240658-1	ROLLER, CAM	62
REF	REF	REF	-	B	454398-2	ROD, FEED	61
REF	REF	REF	-	A	454178-1	GUIDE, FEED ROD	60
REF	REF	REF	-	C	454220-1	CAP, RAM	59
REF	REF	REF	-	D	454485-1	HOUSING	58
							57

1	1	1	-	B	690542-2	PAWL, FEED	56
REF	REF	REF	-	B	240624-1	PIN, FEED FINGER	55
REF	REF	REF	-	B	691499-1	SPRING, FEED FINGER	54
REF	REF	REF	-	B	690541-1	HOLDER, FEED FINGER	53
REF	REF	REF	-	A	455679-1	LEVER, TERMINAL FEED ARM	52
1	1	1	-	A	811242-2	BUMPER, HOLDDOWN	51
1	1	1	-	A	690753-1	SPACER, TONKER	50
1	-	-	-	B	690602-6	CAM, PRE-FEED 1 5/8 ST	49
-	1	-	-	B	690602-5	CAM, PRE-FEED 1 1/8 ST	48
-	-	1	-	B	690501-4	CAM, POST-FEED 1 5/8 ST	47
1	1	1	-	B	459456-1	APPLICATOR, BASIC (SUBASSY)	46
1	1	1	-	A	690191-1	PLUG, NYLON	45
1	1	1	-	C	455673-1	RAM	44
1	1	1	-	A	690125-1	WASHER, LAMINATED	43
1	1	1	-	A	690124-1	WASHER, RAM	42
1	1	1	-	A	7-21002-9	BOLT, CRIMPER (5/16x1.00)	41
1	1	1	-	A	23241-6	BALL, STEEL	40
1	1	1	-	A	690170-1	SPRING, COMPRESSION	39
1	1	1	-	C	690142-1	DISC, INSULATION	38
1	1	1	-	D	354777-1	WIRE DISC, PLASTIC	37
1	1	1	-	A	22480-5	WASHER, SPRING	36
1	1	1	-	B	690212-1	POST, RAM	35
1	1	1	-	B	2-690786-3	SUPPORT, TERMINAL	34
REF	REF	REF	-	D	455675-1	PLATE, BASE	33
1	1	1	-	A	690432-3	SCREW, ADJUSTMENT	32
							31

REF	REF	REF	-	B	455689-1	BLOCK, STRIP GUIDE ADJ	30
1	1	1	-	C	455671-1	STRIP GUIDE PLATE ASSY	29
1	1	1	-	C	1-455888-0	SPACER, FRONT SHEAR DEP	28
2	2	2	-	A	1-22284-0	SPRING, DRAG	27
1	1	1	-	B	690546-1	LEVER, DRAG RELEASE	26
1	1	1	-	B	240792-1	DRAG, TERMINAL	25
1	1	1	-	D	6-690504-8	GUIDE, STRIP (REAR)	24
1	1	1	-	A	690438-1	GUIDE, STRIP (FRONT)	23
-	-	1	-	B	690472-2	STRIPPER	22
REF	REF	REF	-	A	4-22284-9	SPRING, FEED RETURN	21
1	1	-	-	A	679218-1	STRIPPER WIRE STOP ASSY	20
1	1	-	-	B	458949-1	STRIPPER	19
							18
							17
1	1	1	-	B	318563-1	GUARD, CHIP, FRONT	16
							15
							14
							13
1	1	1	-	A	5-22280-0	SPRING, SHEAR	12
1	1	1	-	B	690461-1	STOP, SHEAR	11
1	1	1	-	C	690459-1	HOLDER, SHEAR (FRONT)	10
1	1	1	-	C	454276-2	SHEAR, FLOAT (FRONT)	9
1	1	1	-	C	7-662186-5	ANVIL	8
							7
							6

Mouser Electronics

Authorized Distributor

Click to View Pricing, Inventory, Delivery & Lifecycle Information:

[TE Connectivity:](#)

[1385597-3](#)