

4

3

2

1

THIS DRAWING IS UNPUBLISHED.

RELEASED FOR PUBLICATION



COPYRIGHT

BY TYCO ELECTRONICS CORPORATION, ALL RIGHTS RESERVED.

LOC

DIST

REVISIONS

DS

—

P

LTR

DESCRIPTION

DATE

DWN

APVD

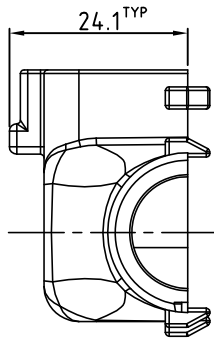
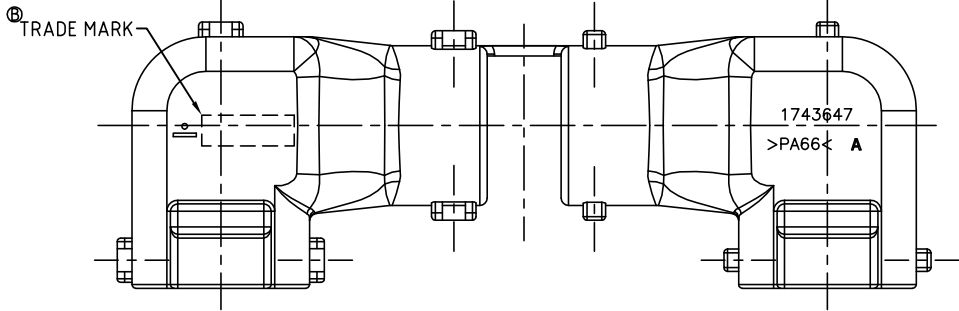
B

REVISED (ECR-10-024983)

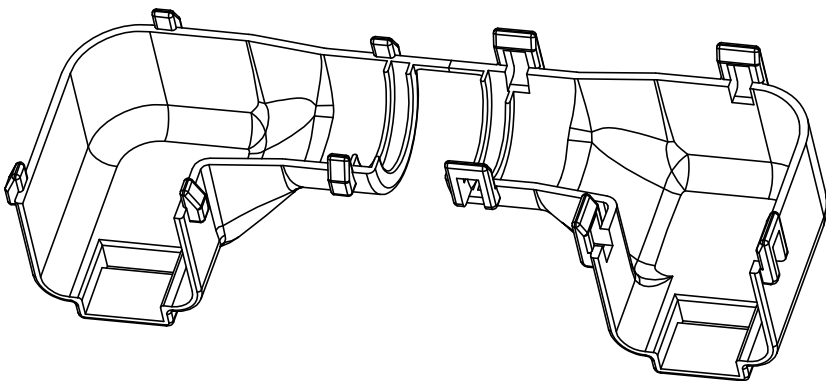
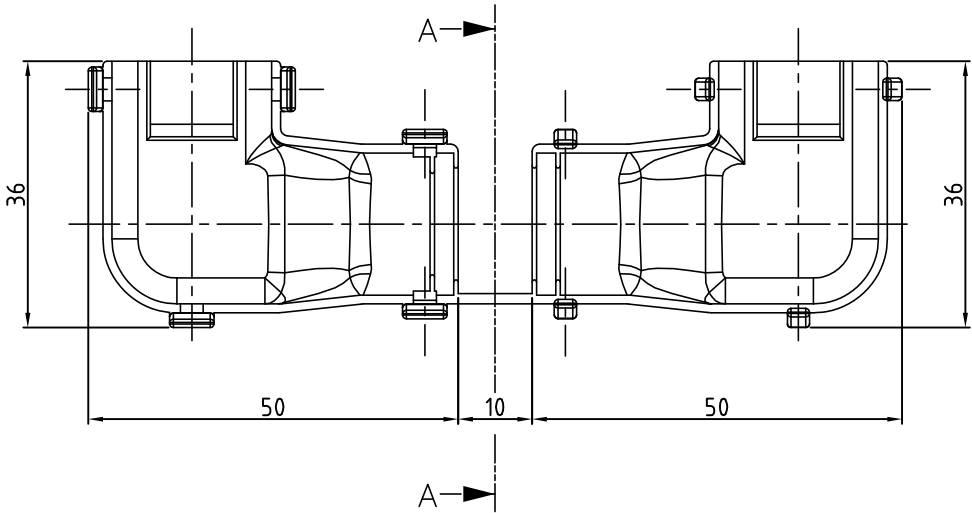
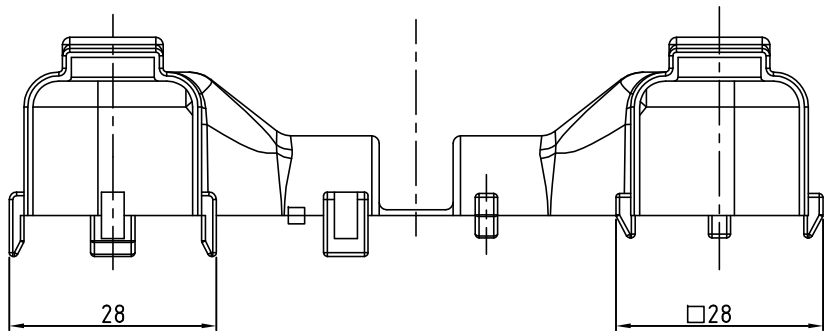
07/DEC/'10

SJ

HG



A-A



SCALE 1:1
3D VIEW

NOTES;

1. WARP IS 0.5 MAX. AND FLASH IS 0.3 MAX.
2. APPLICABLE CONNECTOR : X-1743062-X
3. APPLICABLE CORRUGATOR DIAMETER : $\phi 14.0$
4. APPLICATION TEST SPEC. : MS210-06C (EXCEPT 4.4)

control priority dimension;

■ CRITICAL,

☒ MAJOR,

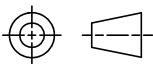
□ MINOR

THIS DRAWING IS A CONTROLLED DOCUMENT FOR TYCO ELECTRONICS CORPORATION
IT IS SUBJECT TO CHANGE AND THE CONTROLLING ENGINEERING ORGANIZATION
SHOULD BE CONTACTED FOR THE LATEST REVISION.

DIMENSIONS:
mm

TOLERANCES UNLESS
OTHERWISE SPECIFIED:

DECIMALS ; ± 0.3
ANGLES ; $\pm 3^\circ$



3rd ANGLE PROJECTION

MATERIAL

SEE TABLE

FINISH

DWN : SJ CHOI

CHK : JW JUNG

APVD : HG CHO

PRODUCT SPEC

APPLICATION SPEC

WEIGHT

CUSTOMER DRAWING

0-1743647-2

CAP COVER

PA 66

BLACK

PART NO.

DESCRIPTION

MATERIAL

COLOR



Tyco Electronics

Tyco Electronics
kyungsan, korea

NAME

COVER HSG FOR MTII/JPT SLD 36P CAP ASS'Y (TYPE "A")

SIZE

CAGE CODE

DRAWING NO

RESTRICTED TO

A3

00779

1743647

SCALE 2/1

SHEET 1 OF 1

REV B

Mouser Electronics

Authorized Distributor

Click to View Pricing, Inventory, Delivery & Lifecycle Information:

[TE Connectivity:](#)

[1743647-2](#)