

INTERCONNECTS

SERIES 800 & 802 • .100" GRID (.030" DIA. PINS), SHROUDED STRAIGHT, SURFACE MOUNT & SOLDERLESS PRESS-FIT • SINGLE AND DOUBLE ROW STRIPS

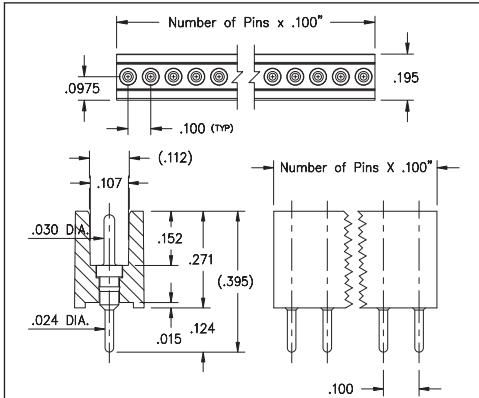


FIG. 1

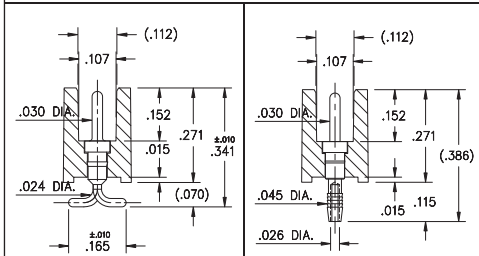


FIG. 2

FIG. 3

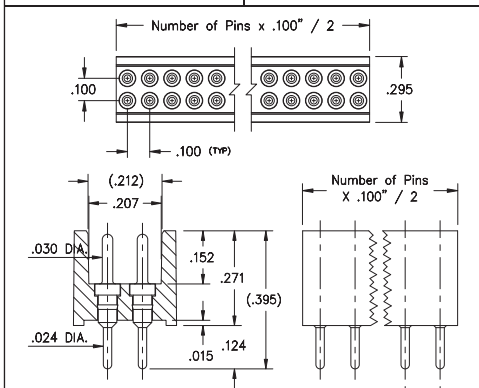


FIG. 4

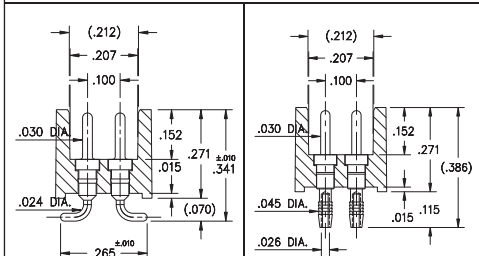
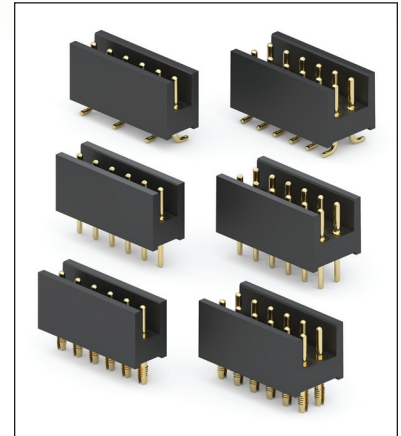


FIG. 5

FIG. 6

- Shrouded pin interconnects available with straight Series 800...10-052 and 802...10-052 or surface mount 800...30-052 and 802...30-052 use MM #5016 pins. See page 215 for details
- Shrouded pin interconnects with solderless press-fit Series 800...61-051 and 802...61-051 use MM #5607 pins. See page 213 for details. The unique compliant tail pins conform to .040"±.003" finished hole without stressing inner layers. Patent No. 4,799,904
- Insulators are high temperature thermoplastic, suitable for all soldering operations



ORDERING INFORMATION

	Series 800...10-052	Straight Pin Header
FIG. 1	800-10-0	-10-052000
	Specify number of pins	01-32
FIG. 2	Series 800...30-052	Surface Mount Pin Header
	800-10-0	-30-052000
	Specify number of pins	03-32
FIG. 3	Series 800...61-051	Compliant Tail Pin Header
	800-10-0	-61-051000
	Specify number of pins	01-32
FIG. 4	Series 802...10-052	Straight Pin Header
	802-10-0	-10-052000
	Specify number of pins	04-64
FIG. 5	Series 802...30-052	Surface Mount Pin Header
	802-10-0	-30-052000
	Specify number of pins	04-64
FIG. 6	Series 802...61-051	Compliant Tail Pin Header
	802-10-0	-61-051000
	Specify number of pins	04-64



XX=Plating Code
See Below

For
Electrical, Mechanical
& Environmental Data,
See page 264

SPECIFY PLATING CODE XX=	10 ◇		
Pin Plating 	10 μ" Au		



Mouser Electronics

Authorized Distributor

Click to View Pricing, Inventory, Delivery & Lifecycle Information:

Mill-Max:

[802-10-004-10-052000](#) [802-10-004-30-052000](#) [802-10-006-10-052000](#) [802-10-006-30-052000](#) [802-10-008-10-052000](#) [802-10-010-10-052000](#) [802-10-010-30-052000](#) [802-10-064-10-052000](#) [802-10-064-30-052000](#) [802-10-008-30-052000](#) [800-10-032-30-052000](#) [800-10-032-10-052000](#)