

4

3

2

1

THIS DRAWING IS UNPUBLISHED.

RELEASED FOR PUBLICATION

© COPYRIGHT

ALL RIGHTS RESERVED.

LOC

DIST


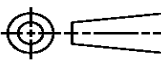
REVISIONS

P	LTR	DESCRIPTION	DATE	DWN	APVD
	B1	ECR-14-002929	28FEB2014	GK	HMR

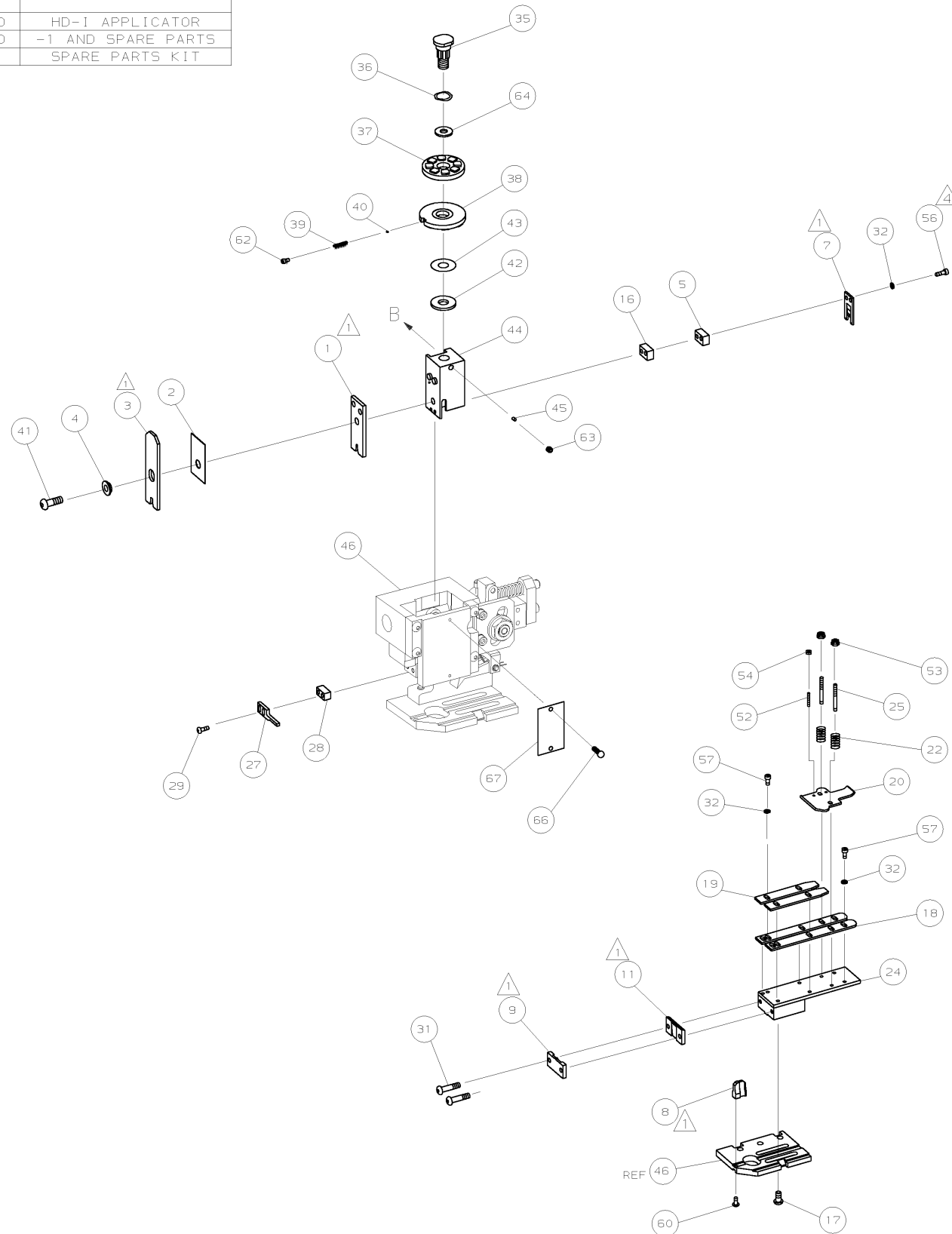
REPLACED BY OCEAN STYLE APPLICATOR PART
NUMBER 2150095-2

FOR REPLACEMENT PARTS FOR APPLICATOR 1339595
REFER TO ADDITIONAL PAGE(S). SPARE PARTS KIT (IF LISTED)
WILL REMAIN AVAILABLE.

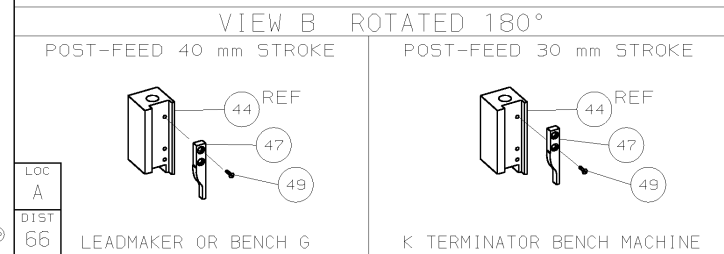
THE REPLACEMENT OCEAN STYLE APPLICATOR HAS THE
SAME TERMINATOR/PRESS INTERFACE AS APPLICATOR
1339595

THIS DRAWING IS A CONTROLLED DOCUMENT.		DWN GOPALAKRISHNA HV		 TE Connectivity			
DIMENSIONS:		CHK RAGHAVENDRA					
		APVD RAGHAVENDRA		NAME END FEED HD-I APPLICATOR			
		PRODUCT SPEC					
		APPLICATION SPEC					
MATERIAL		WEIGHT		SIZE A3	CAGE CODE	DRAWING NO C- 1339595	RESTRICTED TO
FINISH		CUSTOMER DRAWING		SCALE		SHEET 1 OF 2	REV B1

1. RECOMMENDED SPARE PARTS.
2. GREASE RAM, CAM, CAM FOLLOWER AND FEED ROD LIGHTLY.
3. LUBRICATE DAILY PER THE APPLICATOR INSTRUCTION SHEET SUPPLIED WITH THE APPLICATOR.
4. CUT TO LENGTH AT ASSY.



						73
	-	1	1	1339595	PRINT, APPLICATOR LOG SHEET	72
	-	1	1	1338705-2	DOCUMENTATION PACKAGE	71
						70
						69
						68
	-	1	1	461264-1	PLATE, IDENTIFICATION	67
	-	2	2	21017-2	SCR,DRIVE (#2X.19) ID PLATE	66
						65
	-	1	1	986950-1	WASHER, FLAT PRECISION	64
	-	1	1	3-18031-0	SCR,SKT SET(M6X6) RAM	63
	-	1	1	18023-9	SCR,SKT CAP(M4X6) CP D5C	62
						61
	-	1	1	18024-7	SCR,BHC(M4X10) ANVIL	60
						59
						58
4	-	6	6	18023-9	SCR,SHC(M4X6) STRIP GUIDE	57
	-	2	2	1-18023-5	SCR,SHC(M4X25) SLUG BLADE	56
						55
	-	2	2	18029-1	NUT, HEX (M3) DRAG	54
	-	2	2	986965-1	NUT,HEX SL (M4) DRAG STUD	53
	-	2	2	2-18032-2	SCR,SKT SET(M3X10) DRAG	52
						51
						50
	-	1	1	18024-3	SCR,BHC(M3X10) CAM	49
						48
	-	1	1	1338676-1	CAM, POST-FEED 30 & 40 mm ST	47
	-	1	1	1338662-2	APPLICATOR, BASIC (SUBASSY)	46
	-	1	1	690191-1	PLUG, NYLON	45
	-	1	1	1320998-1	RAM	44
	-	1	1	690125-1	WASHER, LAMINATED	43
	-	1	1	690124-1	WASHER, RAM	42
	-	1	1	2-18024-6	SCREW,BHC(M8X25) CRIMPER	41
	-	1	1	23241-1	BALL, STEEL	40
	-	1	1	2-22278-7	SPRING, COMPRESSION	39
	-	1	1	1320922-1	DISC, INSULATION	38
	-	1	1	354777-1	WIRE DISC, PLASTIC	37
	-	1	1	22480-5	WASHER, SPRING	36
	-	1	1	690212-1	POST, RAM	35
						34
						33
	-	8	8	18025-2	WASHER, LOCK (M4) SHEAR BL	32
	-	2	2	1-18024-0	SCR,BHC(M4X20) SHEAR PL	31
						30
	-	2	2	18024-8	SCR,BHC(M4X12) STRIPPER	29
	-	1	1	3-690451-2	SPACER, STRIPPER	28
	-	1	1	240639-1	STRIPPER	27
						26
	-	2	2	1320906-1	DRAG, STUD	25
	-	1	1	1320995-1	STRIP GUIDE	24
						23
	-	2	2	4-22281-1	SPRING, DRAG	22
						21
	-	1	1	1338665-1	DRAG, STOCK	20
	-	2	2	1338664-1	GUIDE, UPPER STRIP	19
	-	2	2	1338663-3	GUIDE, LOWER STRIP	18
	-	4	4	1-18024-8	SCR,BHC(M6X12) STRIP GD PL	17
	-	1	1	1338708-1	SPACER, SLUG BLADE	16
						15
						14
						13
1	-	1	1	240644-1	PLATE, REAR SHEAR	12
						10
1	-	1	1	690482-3	PLATE, FRONT SHEAR	9
1	1	2	1	1-1333216-0	ANVIL	8
1	-	1	1	690474-3	BLADE, SLUG	7
						6
	-	1	1	7-240641-8	SPACER, SLUG BLADE	5
	-	1	1	238009-1	SPACER, BLOCK CRIMPER	4
1	1	2	1	2-854830-8	CRIMPER, INSULATION	3
	-	1	1	1-455888-2	SPACER, CRIMPER	2
1	1	2	1	1-456405-3	CRIMPER, WIRE	1



						DIMENSIONS: mm (INCHES)		MATERIAL		HT TR		FIN	
						DO NOT SCALE PRINT.							
						TOLERANCES UNLESS OTHERWISE SPECIFIED:		DR 21NOV01 APP 21NOV01					
						1 PLC DEC ±		L.L.OFTHOUSE		F.BACKHURST		AMP	
						2 PLC DEC ±		CHK -		REL 16JAN01		AMP Incorporated	
						3 PLC DEC ±				L.L.OFTHOUSE		Harrisburg, PA 17105-3608	
						ANGLES ±		NAME		END FEED HD-I APPLICATOR		MACHINE REF	
						SURF TEXTURE: ✓		SCALE		D DWG NO		HD-I APPL	
						REMOVE BURRS BREAK		1339595				SHEET	
						SHARP EDGES: R0.32 MAX						1 of 1	
B 0150-1630-02		RK DEC02										REV	
A SEE ECN 015A-0032-02		LJL JAN02										B	
P/F	LTR	REVISION RECORD		APP		DATE							
3													
						GAGE CODE		CUSTOMER AND ASSEMBLY DRAWING				RESTRICTED TO	
						00779						-	

Mouser Electronics

Authorized Distributor

Click to View Pricing, Inventory, Delivery & Lifecycle Information:

[TE Connectivity:](#)

[1339595-1](#)