

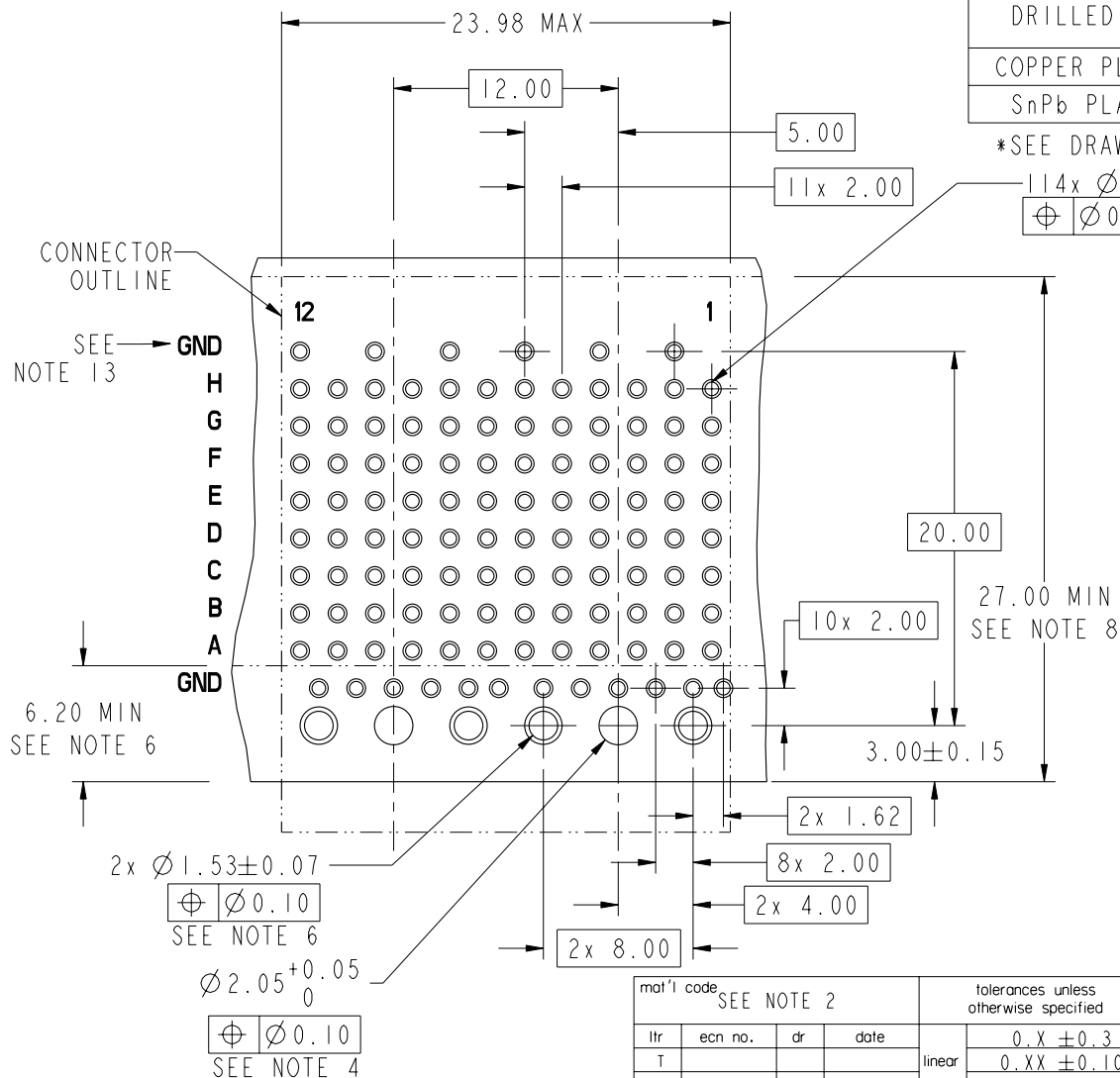


PRODUCT NUMBER
SEE SHEET 1

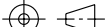
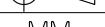
PRESS-FIT HOLES

HOLE DIAMETER AFTER PLATING	$\varnothing 0.65\text{--}\varnothing 0.80$ *	$\varnothing 1.53$
DRILLED HOLE	$\varnothing 0.81\text{--}\varnothing 0.86$ ($\varnothing 0.85$ DRILL)	$\varnothing 1.61\text{--}\varnothing 1.66$ ($\varnothing 1.65$ DRILL)
COPPER PLATING	0.025-0.050	0.025-0.050
SnPb PLATING	0.005-0.015	0.005-0.015

*SEE DRAWING 58351 FOR OTHER OPTIONS



RECOMMENDED PCB HOLE
PATTERN-COMPONENT SIDE

mat'l code SEE NOTE 2				tolerances unless otherwise specified		CUSTOMER		FCi www.fciconnect.com	
ltr	ecr no.	dr	date	linear	0.X ± 0.3		COPY		title RIGHT ANGLE SIGNAL RECEPTACLE 8 ROW, 96 POSITION
T					0.XX ± 0.10		projection 		
				angles	0.XXX ± 0.050				
					0° ± 2°				
				dr	S. KLINE	2000-03-09	product family METRAL 1000		code 213
				enrg	M. HAHN	2000-03-09	size dwg no		
				chr	S. STONER	2000-08-24	1:1		74981
				appd	M. HAHN	2000-08-24	A		
sheet index	revision sheet								

Pro/E

3

cage code 22526

4

PDM: Rev:T

STATUS: Released

Printed: May 13, 2011


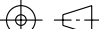

PRODUCT NUMBER

SEE SHEET 1

NOTES

1. UNLESS OTHERWISE SPECIFIED, ALL DIMENSIONS AND TOLERANCES ARE IN ACCORDANCE WITH ASME Y14.5M, 1994
- ②. HOUSING MATERIAL: LIQUID CRYSTAL POLYMER, GLASS FILLED FLAME RETARDANT PER UL94V-0
GROUND SHIELD MATERIAL: COPPER ALLOY
SIGNAL CONTACT MATERIAL: COPPER ALLOY
3. PLATING:
PRESS-FIT TAIL AREA: SnPb ON STANDARD
Sn ON LEAD FREE
MATING CONTACT POINTS: MEETS PERFORMANCE LEVEL SHOWN IN TABLE ON SHEET 1.
- ④. Ø2.05 HOLE IS UNPLATED.
- ⑤. Ø1.53 PLATED HOLES (2X) ARE FOR GROUNDS.
- ⑥. AVOID TRACES IN THIS AREA ON TOP OF PCB DUE TO EXPOSED GROUND SHIELD.
7. UNDERPLATING FOR SHIELD AND SIGNAL CONTACTS IS 1.3 µm Ni MIN.
- ⑧. COMPONENT KEEP OUT ZONE FOR PRESS BLOCK CLEARANCE.
- ⑨. PRODUCT MARKING: DATE AND LOT CODE.
10. SEE GS-20-018 FOR APPLICATION OF CONNECTOR TO PCB.
- ⑪. PCB THICKNESS RANGE: 1.3mm TO 3.4mm.
12. SEE PRODUCT SPECIFICATION GS-12-134 FOR PRODUCT PERFORMANCE CHARACTERISTICS.
- ⑬. THIS GROUND ROW OF VIA-HOLES ONLY REQUIRED FOR PREVIOUS REVISIONS OF THIS DESIGN WHERE THE TOP SHIELDS HAD EON PRESS-FIT. DUE TO INVENTORIES OF PREVIOUS VERSION, WE RECOMMEND THEY BE DESIGNED IN.
- ⑭. PRODUCTS WHERE THE PART NUMBER ENDS IN LF MEET EUROPEAN UNION DIRECTIVES AND OTHER COUNTRY REGULATIONS AS DESCRIBED IN GS-22-008.

ALL PRODUCTS WILL WITHSTAND EXPOSURE TO 260°C FOR 60 SECONDS IN A CONVECTION, INFRA-RED OR VAPOR PHASE REFLOW OVEN.

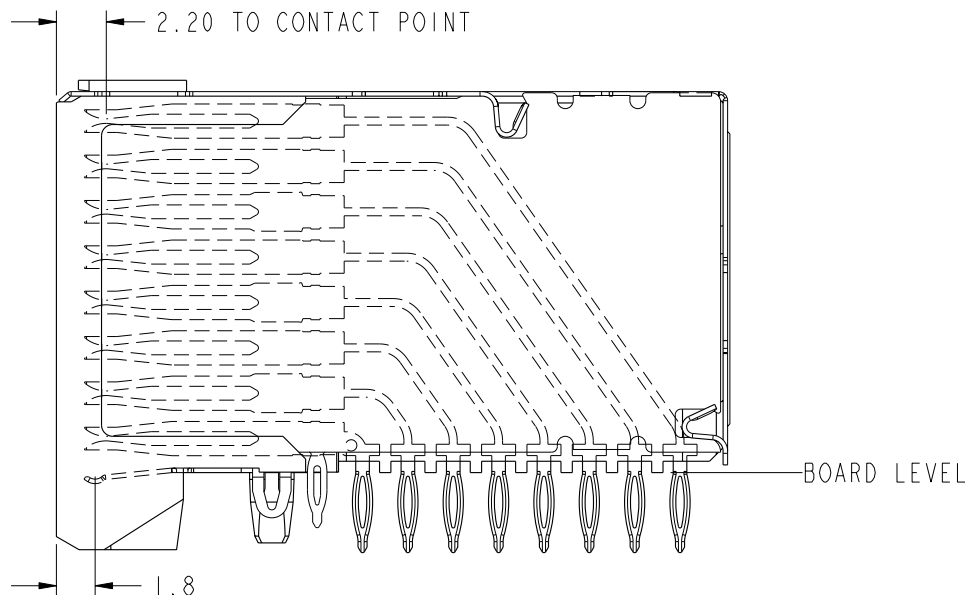
mat'l code SEE NOTE 2				tolerances unless otherwise specified			CUSTOMER		 www.fciconnect.com											
ltr	ecr no.	dr	date	linear	0.X ±0.3			projection 	title RIGHT ANGLE SIGNAL RECEPTACLE 8 ROW, 96 POSITION											
T					0.XX ±0.10															
					0.XXX ±0.050															
				angles	0° ±2°			 scale 2:1	product family						METRAL 1000		code			
				dr	S. KLINE	2000-03-09			size						dwg no		213			
				enrg	M. HAHN	2000-03-09														
				chr	S. STONER	2000-08-24														
				appd	M. HAHN	2000-08-24		A						74981		sheet 3				
sheet index		revision sheet																		

cage code 22526


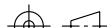



PRODUCT NUMBER
SEE SHEET 1

DISTANCE FROM CONTACT POINT TO BOARD	
CONTACT	DISTANCE
A	12.5
B	15.9
C	18.9
D	21.9
E	25.0
F	28.0
G	31.1
H	34.1



CONTACT POINT AND SKEW

mat'l code SEE NOTE 2				tolerances unless otherwise specified			CUSTOMER		 www.fciconnect.com			
ltr	ecr no.	dr	date	linear	0.X ± 0.3		COPY		 title RIGHT ANGLE SIGNAL RECEPTACLE 8 ROW, 96 POSITION			
T					0.XX ± 0.10		projection					
					0.XXX ± 0.050							
				angles	0° $\pm 2^\circ$							
				dr	S. KLINE	2000-03-09	 MM scale	product family		METRAL 1000		code
				enr	M. HAHN	2000-03-09		size	dwg no		213	
				chr	S. STONER	2000-08-24		A		74981		sheet
				appd	M. HAHN	2000-08-24						4
sheet	revision											
index	sheet											

This document is the property of and embodies
CONFIDENTIAL and PROPRIETARY information of FCI.
No part of the information shown on this
document may be used in any way or disclosed
to others without the written consent of FCI.
Copyright FCI.

Mouser Electronics

Authorized Distributor

Click to View Pricing, Inventory, Delivery & Lifecycle Information:

[FCI / Amphenol:](#)

[74981-102LF](#) [74981-102](#) [74981-902SLF](#) [74981-902LF](#) [74981-302LF](#)