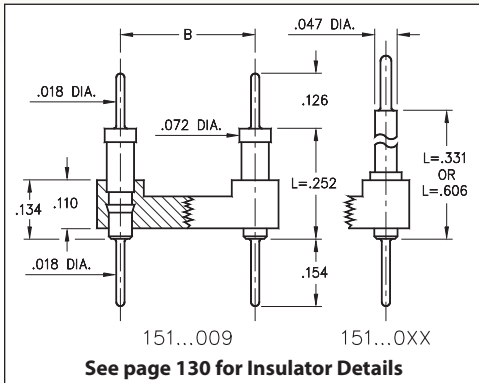
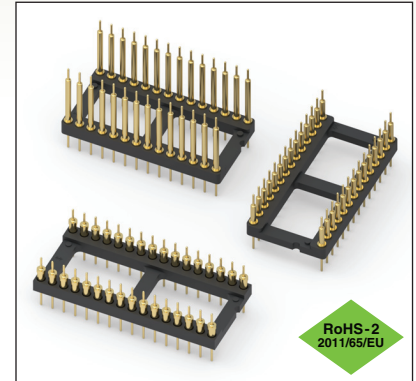


DUAL-IN-LINE HEADERS

SERIES 151...009, 010, 011 • INTERCONNECT • OPEN FRAME



- Series 151 DIL Headers feature .018" dia. solder tails at both ends making these headers entirely pluggable
- Series:
 - 151...009 uses MM #5509 pins
 - 151...010 uses MM #5510 pins
 - 151...011 uses MM #5511 pins
 See pages 212 and 214 for details
- Insulators are high temperature thermoplastic, suitable for all soldering operations
- For Electrical, Mechanical and Environmental Data, see page 264 for details



Total number of pins				Quantity per tube	ORDERING INFORMATION				
	A	B	C		L = .252	L = .331	L = .606		
10	0.5	0.2	0.3	41	151-10-210-00-009000	151-10-210-00-010000	151-10-210-00-011000		
4	0.2	0.3	0.4	102	151-10-304-00-009000	151-10-304-00-010000	151-10-304-00-011000		
6	0.3	0.3	0.4	67	151-10-306-00-009000	151-10-306-00-010000	151-10-306-00-011000		
8	0.4	0.3	0.4	50	151-10-308-00-009000	151-10-308-00-010000	151-10-308-00-011000		
10	0.5	0.3	0.4	40	151-10-310-00-009000	151-10-310-00-010000	151-10-310-00-011000		
14	0.7	0.3	0.4	28	151-10-314-00-009000	151-10-314-00-010000	151-10-314-00-011000		
16	0.8	0.3	0.4	25	151-10-316-00-009000	151-10-316-00-010000	151-10-316-00-011000		
18	0.9	0.3	0.4	22	151-10-318-00-009000	151-10-318-00-010000	151-10-318-00-011000		
20	1.0	0.3	0.4	20	151-10-320-00-009000	151-10-320-00-010000	151-10-320-00-011000		
22	1.1	0.3	0.4	18	151-10-322-00-009000	151-10-322-00-010000	151-10-322-00-011000		
24	1.2	0.3	0.4	16	151-10-324-00-009000	151-10-324-00-010000	151-10-324-00-011000		
28	1.4	0.3	0.4	14	151-10-328-00-009000	151-10-328-00-010000	151-10-328-00-011000		
20	1.0	0.4	0.5	20	151-10-420-00-009000	151-10-420-00-010000	151-10-420-00-011000		
22	1.1	0.4	0.5	18	151-10-422-00-009000	151-10-422-00-010000	151-10-422-00-011000		
24	1.2	0.4	0.5	16	151-10-424-00-009000	151-10-424-00-010000	151-10-424-00-011000		
28	1.4	0.4	0.5	14	151-10-428-00-009000	151-10-428-00-010000	151-10-428-00-011000		
32	1.6	0.4	0.5	12	151-10-432-00-009000	151-10-432-00-010000	151-10-432-00-011000		
24	1.2	0.6	0.7	16	151-10-624-00-009000	151-10-624-00-010000	151-10-624-00-011000		
28	1.4	0.6	0.7	14	151-10-628-00-009000	151-10-628-00-010000	151-10-628-00-011000		
32	1.6	0.6	0.7	12	151-10-632-00-009000	151-10-632-00-010000	151-10-632-00-011000		
36	1.8	0.6	0.7	11	151-10-636-00-009000	151-10-636-00-010000	151-10-636-00-011000		
40	2.0	0.6	0.7	10	151-10-640-00-009000	151-10-640-00-010000	151-10-640-00-011000		
42	2.1	0.6	0.7	9	151-10-642-00-009000	151-10-642-00-010000	151-10-642-00-011000		
48	2.4	0.6	0.7	8	151-10-648-00-009000	151-10-648-00-010000	151-10-648-00-011000		
50	2.5	0.6	0.7	8	151-10-650-00-009000	151-10-650-00-010000	151-10-650-00-011000		
52	2.6	0.6	0.7	7	151-10-652-00-009000	151-10-652-00-010000	151-10-652-00-011000		
50	2.5	0.9	1.0	8	151-10-950-00-009000	151-10-950-00-010000	151-10-950-00-011000		
52	2.6	0.9	1.0	7	151-10-952-00-009000	151-10-952-00-010000	151-10-952-00-011000		
64	3.2	0.9	1.0	6	151-10-964-00-009000	151-10-964-00-010000	151-10-964-00-011000		
XX=Plating Code See to Right					SPECIFY PLATING CODE XX =		10 ◆		
					Pin Plating		10 μ" Au		

