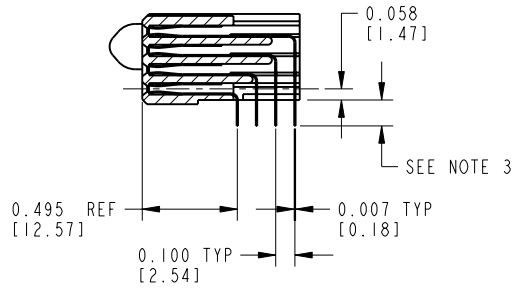


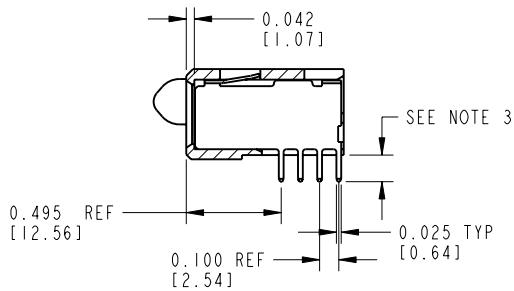
Printed: Dec 20, 2010



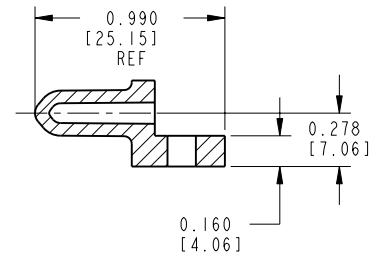
PRODUCT NUMBER  
51427-001--  
NOTE: ②



SECTION C-C



SECTION B-B



SECTION A-A  
SCALE 1:1

CONFIDENTIAL

mat'l code				SEE NOTES		tolerances unless otherwise specified		CUSTOMER		FCI	
lfr	ecn no.	dr	date					COPY		www.fciconnect.com	
F				linear		.XX±.01/.X±.3		projection		title	2P + 24S +2P R/A RECEPTACLE
						.XXX±.005/.X±.13				product family	PwrBlade
				angles		.XXX±.0020/.XXX±.051				code	213
						0°±2°				size	dwg no
				dr	C. BAROT	01-18-99		INCH/MM		A	51427
				enqr	J. BROWN	02-18-00		scale			
				chr	J. BROWN	01-18-99					
				appd	J. BROWN	02-21-00					
sheet index	revision sheet										

cage code 22526

Pro/E

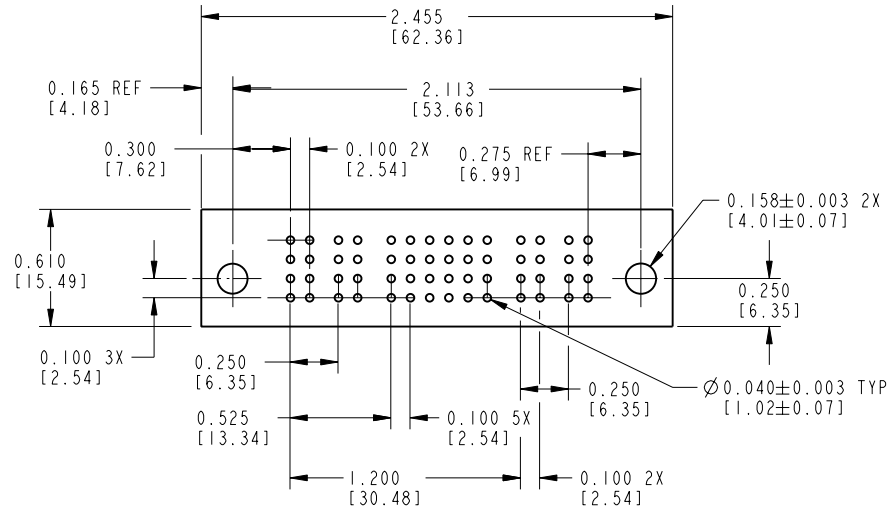
PDM: Rev:F

STATUS: Released

Printed: Dec 20, 2010



PRODUCT NUMBER  
51427-001--  
NOTE: ②



RECOMMENDED PCB FOOTPRINT  
SCALE 1:1

CONFIDENTIAL

mat'l code				SEE NOTES		tolerances unless otherwise specified		CUSTOMER		FCI	
lfr	ecn no.	dr	date					COPY		www.fciconnect.com	
F				linear		.XX±.01/.X±.3		projection		title	2P + 24S +2P R/A RECEPTACLE
						.XXX±.005/.X±.13				product family	PwrBlade
				angles		.XXX±.0020/.XXX±.051		INCH/MM		code	213
						0°±2°		scale		size	dwg no
				dr	C. BAROT	01-18-99		1:1		A	51427
				enqr	J. BROWN	02-18-00					sheet
				chr	J. BROWN	01-18-99					3 of 4
				appd	J. BROWN	02-21-00					
sheet index	revision sheet										

cage code 22526

Pro/E

PDM: Rev:F

STATUS: Released

Printed: Dec 20, 2010



PRODUCT NUMBER

51427-001--  
NOTE: ②

CONNECTOR NOTES:

1. HOUSING MATERIAL: GLASS FILLED HIGH TEMP THERMOPLASTIC, UL94V-0  
SIGNAL CONTACT MATERIAL: COPPER ALLOY  
POWER CONTACT MATERIAL: COPPER ALLOY
2. 51427-001; 51427-001LF; 51427-001GLF PLATING SPEC. SEE PRINT: 10064183
3. TAIL LENGTH  
0.135 ± .020 [3.43 ± .25]
4. MANUFACTURER NAME, P/N, AND DATE CODE TO APPEAR ON THIS SURFACE.

PCB NOTES:

5. ALL DIMENSIONS ARE BASIC UNLESS OTHERWISE SPECIFIED
6. ALL THROUGH HOLES ARE LOCATED WITH A TRUE POSITION OF 0.004"
7. ALL DIAMETERS ARE FINISHED HOLE SIZES
8. Ø0.158" THROUGH HOLES ARE UNPLATED

CONFIDENTIAL

mat'l code				SEE NOTES		tolerances unless otherwise specified		CUSTOMER		FCI		www.fciconnect.com	
lfr	ecn no.	dr	date	linear	.XX±.01/.X±.3		COPY			title			
F					.XXX±.005/.X±.13		projection			2P + 24S + 2P			
					.XXX±.0020/.XXX±.051		INCH/MM			R/A RECEPTALE			
				angles	0° ± 2°		scale			product family		code	
				dr	C. BAROT	01-18-99	1:1			PwrBlade		213	
				engr	J. BROWN	02-18-00				size		sheet	
				chr	J. BROWN	01-18-99			A		4		
				appd	J. BROWN	02-21-00							
sheet index		revision sheet											

cage code 22526

Pro/E

3

4

# Mouser Electronics

Authorized Distributor

Click to View Pricing, Inventory, Delivery & Lifecycle Information:

[FCI / Amphenol:](#)

[51427-001LF](#)