

MICRO SWITCH

FREEPORT ILLINOIS, U.S.A
A DIVISION OF HONEYWELL
FED. MFG. CODE 91929

ASSEMBLY- PUSHBUTTON SWITCH

CATALOG LISTING

IPB575-T

FAA-PMA

IPB575-T
PAGE 1 OF 1

M

DRAWING
NUMBER

X
X

ISSUE
8

REPLACES
RELEASE NO. PR-9121-T

CHECK

REVISIONS

A	PR-9121	WJM	24 JUL 80
B	C O	J M J	13 OCT 80
C	CO48860	C E B	22 DEC 80
D	CO49278	J A P	MAR 81
E	CO77562	J A L	MAR 94
F	CO-93166	G J W	20 JUL 98
G	CO93880	G J W	6 JAN 99

CHECK

CHECK

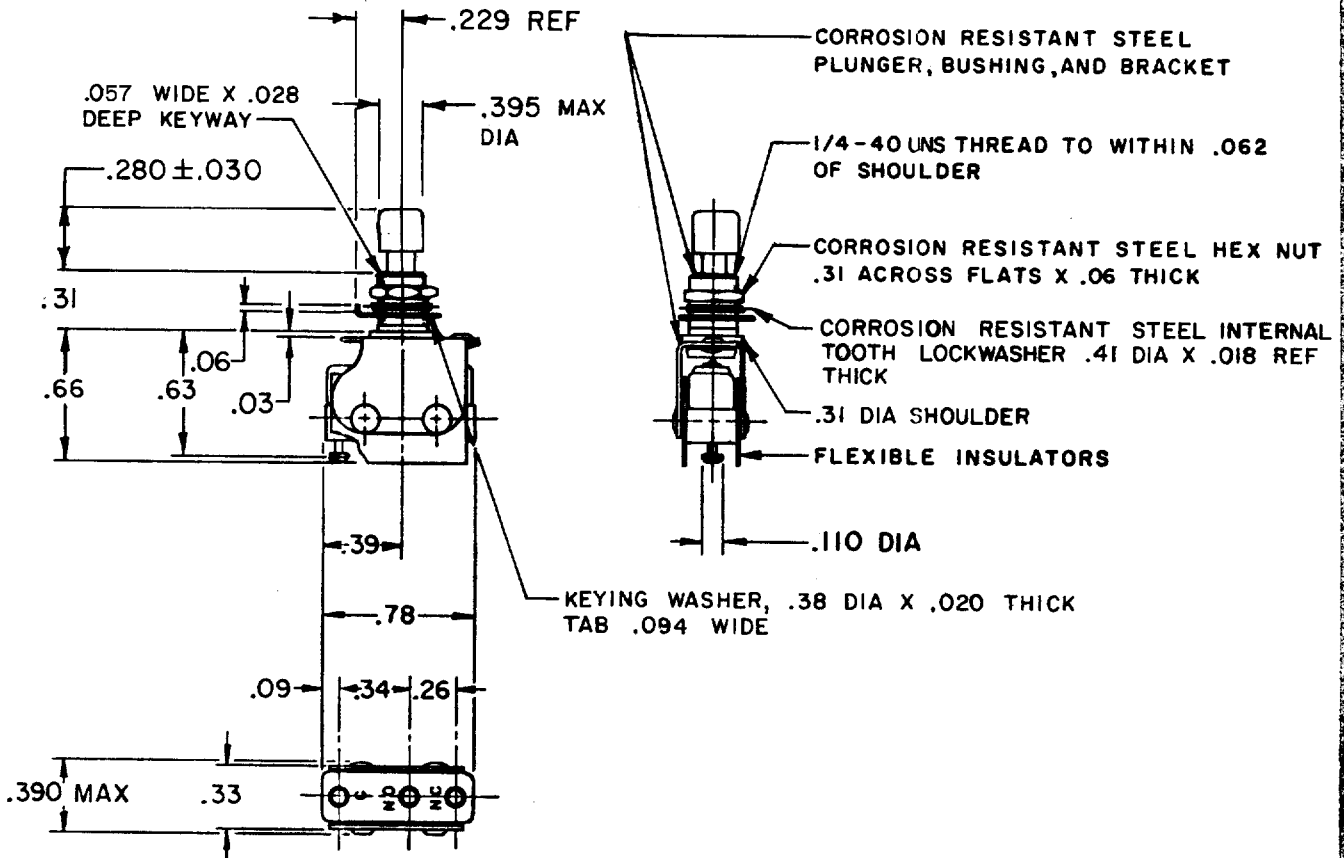
CHECK

CHECK

CHECK

CHECK

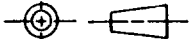
CHECK



- NOTE -
- 1 - UNIT INCLUDES CAT. LIST. "23SM" BASIC SWITCH
 - 2 - TERMINALS ARE PLATED FOR SOLDERING
 - 3 - RECOMMENDED FOR MANUAL OPERATION ONLY
 - 4 - MOUNTING HARDWARE AND WHITE PLASTIC BUTTON FURNISHED UNASSEMBLED

THIS DRAWING COVERS A PROPRIETARY ITEM AND IS THE PROPERTY OF MICRO SWITCH, A DIVISION OF HONEYWELL. THIS DRAWING IS NOT TO BE COPIED OR USED WITHOUT THE APPROVAL OF MICRO SWITCH.

THIRD ANGLE PROJECTION



CHARACTERISTICS
OPERATING FORCE --- 1 LB APPROX
TOTAL TRAVEL ----- .030 APPROX

ELECTRICAL DATA
CONTACT ARRANGEMENT S P D T
30 VOLT DC RATING
INDUCTIVE ----- SEA LEVEL ----- .5 AMP
RESISTIVE ----- SEA LEVEL ----- 1.0 AMP
MAXIMUM INRUSH ----- .2 AMP

SCALE FULL
DO NOT SCALE PRINT
TOLERANCES
APPLY TO DESIGN UNITS. CONVERSIONS ARE ONLY FOR REFERENCE. UNLESS NOTED, TOLERANCES ARE ±

DIM.	TOL.	DIM.	TOL.
mm	mm/in	in	mm/in
NO PLACES	X	1/.04	
ONE PLACE	X,X	0.4/.016	X,X 0.8/.03
TWO PLACES	X,XX	0.19/.008	X,XX 0.38/.015
THREE PLACES	X,XXX		X,XXX 0.13/.005
ANGLES			

DESIGN UNITS METRIC US CUSTOMARY

WEIGHT

FORMTEK
FO-52848-A
DRAWN

WJM 24 JUL 80

Mouser Electronics

Authorized Distributor

Click to View Pricing, Inventory, Delivery & Lifecycle Information:

[Honeywell:](#)

[1PB575-T](#)