
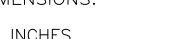
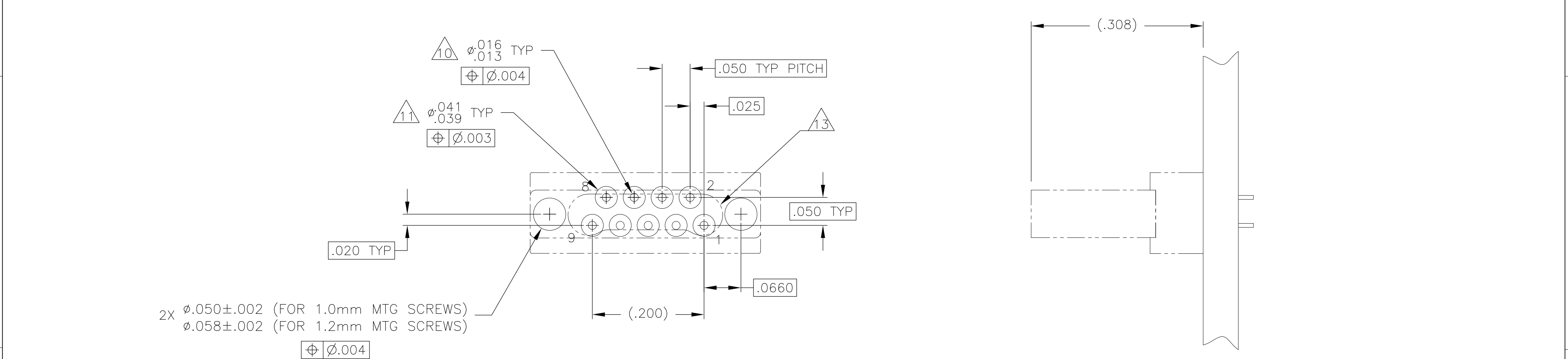
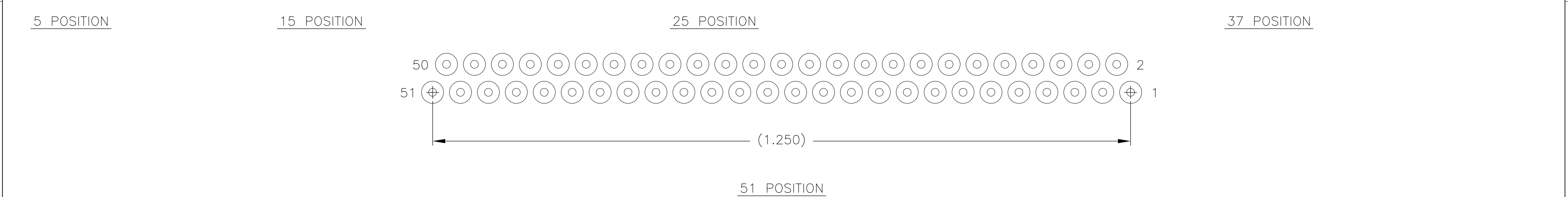
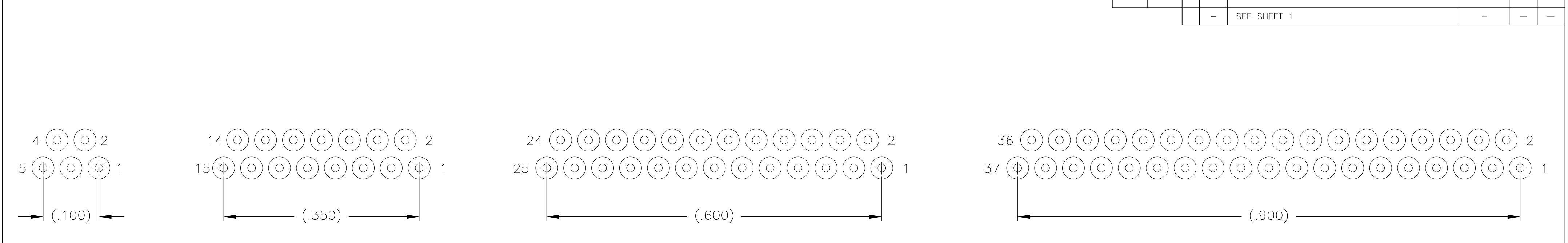


SIZE	B DIM	C DIM ±.0050	(L DIM)
05	.233	.3085	(.100)
09	.333	.4085	(.200)
15	.483	.5585	(.350)
25	.733	.8085	(.600)
37	1.033	1.1085	(.900)
51	1.383	1.4585	(1.250)

- 1 SHELL OPTIONS (TO BE SPECIFIED IN NANONICS PART NUMBER):  
 METAL: 6061-T6 ALUMINUM, ELECTROLESS NICKEL PLATED PER SAE-AMS-C-26074 OR SAE-AMS-2404 (STANDARD) OR GOLD PLATED PER ASTM B488  
 303 STAINLESS STEEL, PASSIVATED PER SAE-AMS-2700  
 INSULATOR MATERIAL FOR ALL METAL SHELLS IS LIQUID CRYSTAL POLYMER (LCP) PER MIL-M-24519 OR PER ASTM D5138  
 PLASTIC: LIQUID CRYSTAL POLYMER (LCP) PER MIL-M-24519 OR PER ASTM D5138
  - 2 STANDARD 1.0 X 0.25mm MOUNTING AND JACKSCREW THREADS ARE SHOWN FOR REFERENCE ONLY AND MUST BE SPECIFIED IN THE NANONICS PART NUMBER WHEN REQUIRED. 1.2 X 0.25mm THREADS ALSO AVAILABLE.
  - 3 MOUNTING HARDWARE IS AVAILABLE WITH THIS CONFIGURATION (NOT SHOWN). HARDWARE MUST BE SPECIFIED IN THE NANONICS PART NUMBER. CONSULT TYCO ELECTRONICS FOR DETAILS.
  - 4 LEAD MATERIAL: HH BRASS, GOLD PLATED PER ASTM B488
  - 5 LEAD ORGANIZER MATERIAL IS LIQUID CRYSTAL POLYMER PER ASTM D5138
  - 6 THROUGH HOLE LEADS ARE EPOXY ENCAPSULATED WITHIN THE LEAD ORGANIZER
  - 7 NANONICS TERMINATION CODE: W5
  - 8 THIS DRAWING PREVIOUSLY IDENTIFIED AS NANONICS N10138/153

THIS DRAWING IS A CONTROLLED DOCUMENT.		DWN C SCHOLL 26 SEP 05		 TE Connectivity							
		CHK M. STORRY 26 SEP 05									
DIMENSIONS: INCHES		TOLERANCES UNLESS OTHERWISE SPECIFIED:		NAME  RECEPTACLE ASSY, VERTICAL MOUNT, THROUGH HOLE, 1 ROW TO 2 ROW, .050 SPACING, PLASTIC OR METAL, GOLD LEADS, ROHS COMPLIANT							
		APVD —									
		PRODUCT SPEC —									
		APPLICATION SPEC —									
MATERIAL		FINISH		SIZE	CAGE CODE	DRAWING NO	RESTRICTED TO				
SEE NOTES		SEE NOTES		A2	OPJN9	C=1589936	—				
CUSTOMER DRAWING						SCALE	8:1	SHEET	1 of 2	REV	B1



TYPICAL PCB LAYOUT 9  
SIZE 09 SHOWN FOR REFERENCE

9

POSITIONAL TOLERANCES FOR BASIC DIMENSIONED FEATURES ARE RELATIVE TO FIDUCIALS OR SOME SIMILAR DATUM REFERENCES DEFINED BY PCB DESIGNER.

10

PLATED THROUGH HOLES

11

SOLDER PADS

12

ALL THROUGH HOLE LAYOUTS ARE AS VIEWED FROM TOP OF PCB.

13

CONNECTOR ORIENTATION

THIS DRAWING IS A CONTROLLED DOCUMENT.		DWN C SCHOLL 26 SEP 05	TE Connectivity	
DIMENSIONS: INCHES		CHK M. STORRY 26 SEP 05	NAME	
		APVD -	PRODUCT SPEC	
		APPLICATION SPEC		
		-		
		WEIGHT -		
MATERIAL SEE NOTES	FINISH SEE NOTES	CUSTOMER DRAWING		

SIZE  
A2

CAGE CODE  
0PJN9

DRAWING NO  
C=1589936

RESTRICTED TO  
-

SCALE  
8:1

SHEET  
2 of 2

REV  
B1

# Mouser Electronics

Authorized Distributor

Click to View Pricing, Inventory, Delivery & Lifecycle Information:

[TE Connectivity:](#)

[SSM009W5LQ](#)