

CAT. NO. & DIMENSIONS

NO. OF CONTACTS (n)	CAT. NO.	DIMENSIONS (NOTE2)			
		A ± 0.2	B ± 0.2	C ± 0.2	D ± 0.1
4	SFW4R-5/6STZ__LF	9.8	8.6	3.0	5.3
5	SFW5R-5/6STZ__LF	10.8	9.6	4.0	6.3
6	SFW6R-5/6STZ__LF	11.8	10.6	5.0	7.3
7	SFW7R-5/6STZ__LF	12.8	11.6	6.0	8.3
8	SFW8R-5/6STZ__LF	13.8	12.6	7.0	9.3
9	SFW9R-5/6STZ__LF	14.8	13.6	8.0	10.3
10	SFW10R-5/6STZ__LF	15.8	14.6	9.0	11.3
11	SFW11R-5/6STZ__LF	16.8	15.6	10.0	12.3
12	SFW12R-5/6STZ__LF	17.8	16.6	11.0	13.3
13	SFW13R-5/6STZ__LF	18.8	17.6	12.0	14.3
14	SFW14R-5/6STZ__LF	19.8	18.6	13.0	15.3
15	SFW15R-5/6STZ__LF	20.8	19.6	14.0	16.3
16	SFW16R-5/6STZ__LF	21.8	20.6	15.0	17.3
17	SFW17R-5/6STZ__LF	22.8	21.6	16.0	18.3
18	SFW18R-5/6STZ__LF	23.8	22.6	17.0	19.3
19	SFW19R-5/6STZ__LF	24.8	23.6	18.0	20.3
20	SFW20R-5/6STZ__LF	25.8	24.6	19.0	21.3
21	SFW21R-5/6STZ__LF	26.8	25.6	20.0	22.3
22	SFW22R-5/6STZ__LF	27.8	26.6	21.0	23.3
23	SFW23R-5/6STZ__LF	28.8	27.6	22.0	24.3
24	SFW24R-5/6STZ__LF	29.8	28.6	23.0	25.3
25	SFW25R-5/6STZ__LF	30.8	29.6	24.0	26.3
26	SFW26R-5/6STZ__LF	31.8	30.6	25.0	27.3
27	SFW27R-5/6STZ__LF	32.8	31.6	26.0	28.3
28	SFW28R-5/6STZ__LF	33.8	32.6	27.0	29.3
29	SFW29R-5/6STZ__LF	34.8	33.6	28.0	30.3
30	SFW30R-5/6STZ__LF	35.8	34.6	29.0	31.3

CAT. NO.

SFW (n) R - 5 ST Z __ LF

SERIES NAME

NO. OF CONTACTS

RIGHT ANGLE TYPE

FOR CIC, CONTACT DIRECTION

5. LOWER CONTACT TYPE

6. UPPER CONTACT TYPE

FOR AUTOMATIC MOUNTING (SMT)

VARIATION

PACKAGE STYLE

LEAD FREE

NOTES

1. THIS PRODUCT IS THE CONNECTOR USED FOR CIC AND COPES WITH AUTOMATIC MOUNTING (SMT).
2. SEE PART DRAWINGS FOR DIMENSIONS A~D.

mat'l. code				surface ISO 1302 ✓		tolerance ISO 406 ISO 1101		projection 		product family 58RF		CODE JP	
ltr	ecn no	dr	date	tolerances unless otherwise specified				mm 		title CAT. NO. TABLE FOR 1mm SPACING SMT CONNECTOR (CAT.NO. SFW__R-5/6STZ__LF)			
A	J07-0086	H.T.	2/5/07	angles linear									
				dr		2/8/07		FCI		dwg no		sheet 1 of 1	
				enrg		2/5/07				JSA 97270		size	
				chr		2/7/07							
				appd		2/7/07							
sheet index		revision		A								Rev. A	

SC-SFW12 JSA97271 97272 97273 97274 97275 91675
form: A4

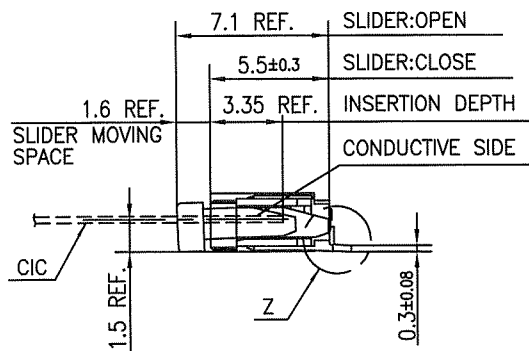
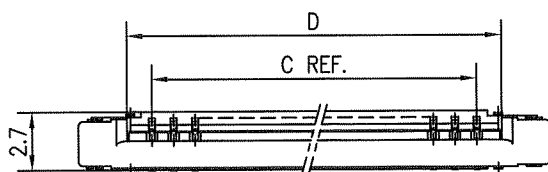
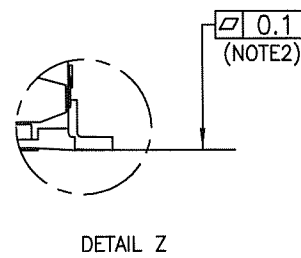
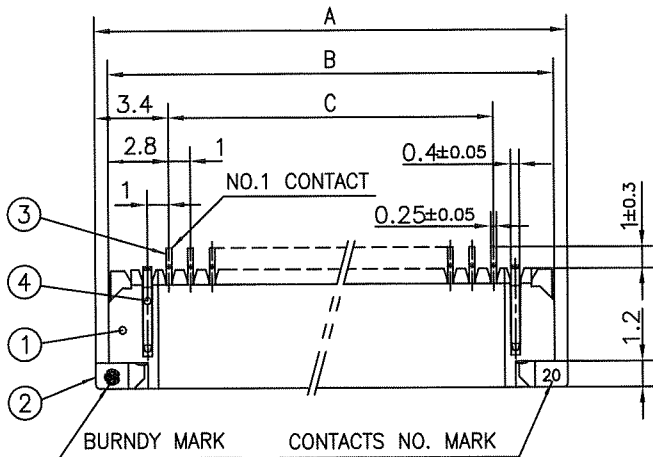
1

2

n : NO. OF CONTACTS

C

D



PT. NO.	PARTS NAME	MATERIAL	Q'TY	NOTE
1	HOUSING	PPS RESIN GLASS REINFORCED (UL94V-0)	1	COLOR:BROWN
2	SLIDER		1	COLOR:BEIGE
3	CONTACT	PHOSPHOR BRONZE	n	PLATING:THIN TIN
4	MOUNTING PLATE		2	PLATING:TIN

n : NO. OF CONTACTS

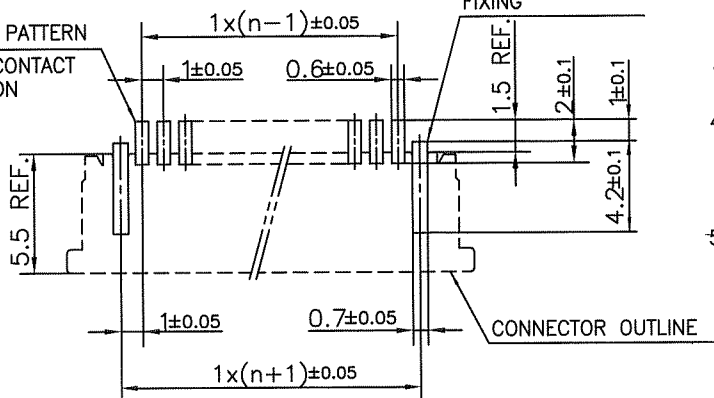
NOTES

1. THIS PRODUCT IS THE CONNECTOR USED FOR CIC AND COPES WITH AUTOMATIC MOUNTING (SMT).
2. FLATNESS FOR CONTACT TERMINAL HOUSING MUST BE WITHIN TOLERANCE IN Z PORTION DETAILED DRAWING.
3. THIS PRODUCT IS UPPER CONTACT TYPE CONNECTOR.
4. THIS PRODUCT MEETS EUROPEAN UNION DIRECTIVES AND OTHER COUNTRY REGULATIONS AS DISCRIBED IN GS-22-008
5. THE HOUSING WILL WITHSTAND EXPOSURE TO 260°C PEAK TEMPERATURE FOR 10 SECONDS IN A REFLOW SOLDERING OVEN.

RECOMMENDED PC BOARD LAYOUT
(COMPONENT SIDE)

BASIC PATTERN
NO.1 CONTACT
POSITION

PATTERN FOR
MOUNTING PLATE
FIXING



mat'l. code				surface ISO 1302 ✓	tolerance ISO 406 ISO 1101	projection 	product family 58RF	CODE JP
ltr	ecn no	dr	date	tolerances unless otherwise specified		mm 	title 1mm SPACING SMT CONNECTOR (Cat. No. SFW__R-6STZ__LF)	
A	J07-0086	H.T	2/5/07	angles	linear			
				dr	2/5/07	FCI	dwg no JSA 97272	
				enr	2/5/07			
				chr	2/7/07			
				appd	2/7/07			
sheet index	revision	A	1				type Product Customer Drawing	
	sheet						Rev A	

SC-SFW12 JSA97270
form: A4

CAT. NO. & DIMENSIONS

NO. OF CONTACTS (n)	CAT. NO. (NOTE2)	DIMENSIONS (NOTE3)		
		E ± 5	F ± 0.3	G ± 0.1
4	SFW4R-5/6STZE1LF	20.4	16	—
5	SFW5R-5/6STZE1LF	28.4	24	—
6	SFW6R-5/6STZE1LF	28.4	24	—
7	SFW7R-5/6STZE1LF	28.4	24	—
8	SFW8R-5/6STZE1LF	28.4	24	—
9	SFW9R-5/6STZE1LF	28.4	24	—
10	SFW10R-5/6STZE1LF	28.4	24	—
11	SFW11R-5/6STZE1LF	28.4	24	—
12	SFW12R-5/6STZE1LF	28.4	24	—
13	SFW13R-5/6STZE1LF	36.4	32	28.4
14	SFW14R-5/6STZE1LF	36.4	32	28.4
15	SFW15R-5/6STZE1LF	36.4	32	28.4
16	SFW16R-5/6STZE1LF	36.4	32	28.4
17	SFW17R-5/6STZE1LF	48.4	44	40.4
18	SFW18R-5/6STZE1LF	48.4	44	40.4
19	SFW19R-5/6STZE1LF	48.4	44	40.4
20	SFW20R-5/6STZE1LF	48.4	44	40.4
21	SFW21R-5/6STZE1LF	48.4	44	40.4
22	SFW22R-5/6STZE1LF	48.4	44	40.4
23	SFW23R-5/6STZE1LF	48.4	44	40.4
24	SFW24R-5/6STZE1LF	48.4	44	40.4
25	SFW25R-5/6STZE1LF	48.4	44	40.4
26	SFW26R-5/6STZE1LF	48.4	44	40.4
27	SFW27R-5/6STZE1LF	48.4	44	40.4
28	SFW28R-5/6STZE1LF	60.4	56	52.4
29	SFW29R-5/6STZE1LF	60.4	56	52.4
30	SFW30R-5/6STZE1LF	60.4	56	52.4

CAT. NO.

SFW (n) R - 5 ST Z E1 LF

SERIES NAME

NO. OF CONTACTS

RIGHT ANGLE TYPE

FOR CIC CONTACT DIRECTION

5. LOWER CONTACT TYPE

6. UPPER CONTACT TYPE

FOR AUTOMATIC MOUNTING (SMT)

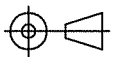
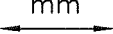
VARIATION

TAPE PACKAGING

LEAD FREE

NOTES

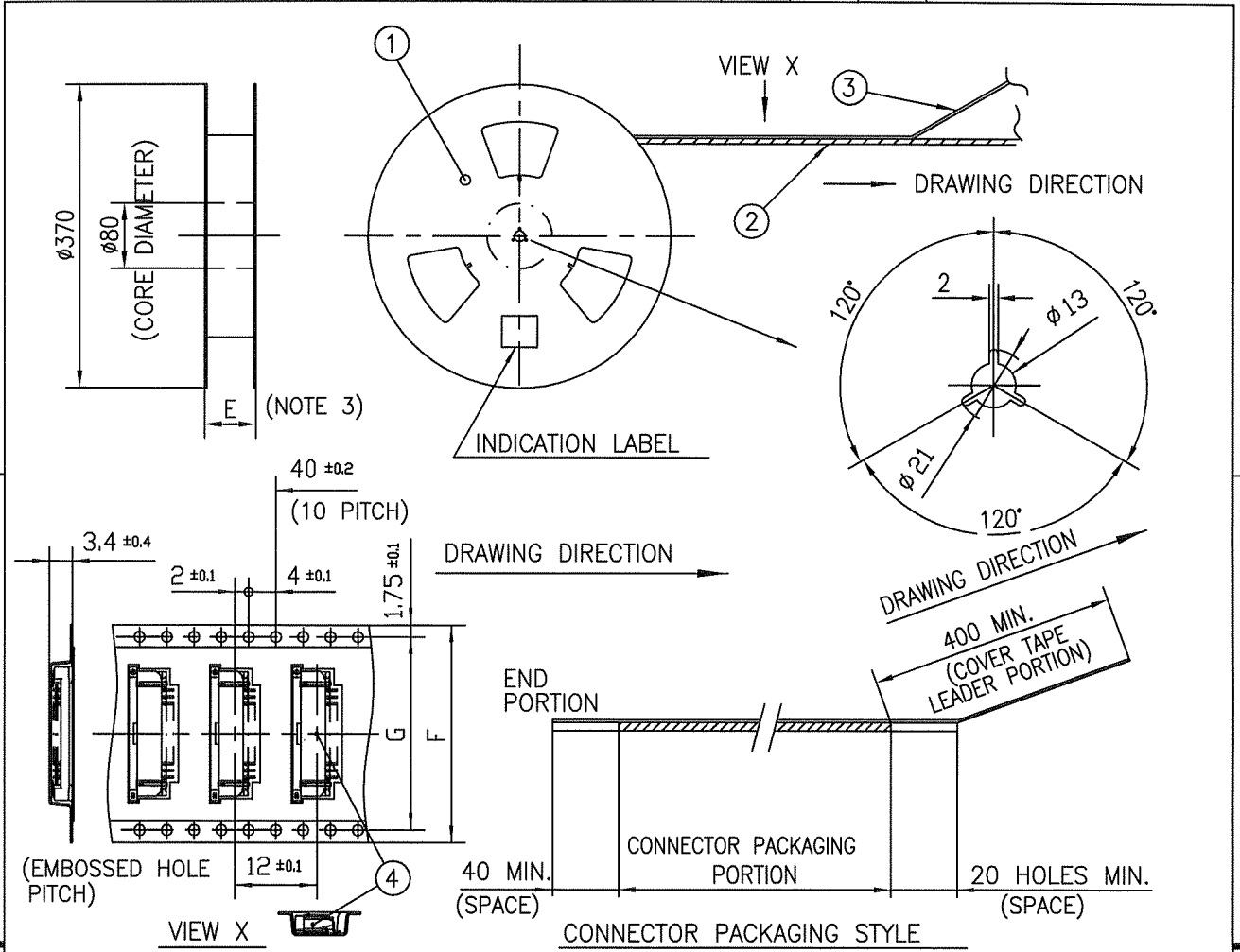
1. THIS PRODUCT IS THE CONNECTOR USED FOR CIC AND COPES WITH AUTOMATIC MOUNTING (SMT).
2. THIS CATALOG NO. INDICATES PLASTIC TAPE PACKAGED CONNECTOR.
3. SEE PART DRAWINGS FOR DIMENSIONS E~G.

mat'l. code				surface ISO 1302 ✓		tolerance ISO 406 ISO 1101		projection 		product family 58RF		CODE JP	
ltr	ecn no	dr	date	tolerances unless otherwise specified				mm 		title CAT. NO. TABLE FOR PLASTIC TAPE PACKAGED 1mm SPACING SMT CONNECTOR (CAT.NO. SFW__R-5/6STZE1LF)			
A	J07-0086	H.T.	2/5/07	angles		linear		scale \propto		dwg no JSA 97273			
				dr		engr		chr		sheet 1 of 1 size A4			
				appd		S. Chudamani		2/5/07		type Product Customer Drawing			
sheet index		revision A		sheet 1								Rev. A	

SC-SFW12 form: A4 JSA97270 97274 97275

1

2

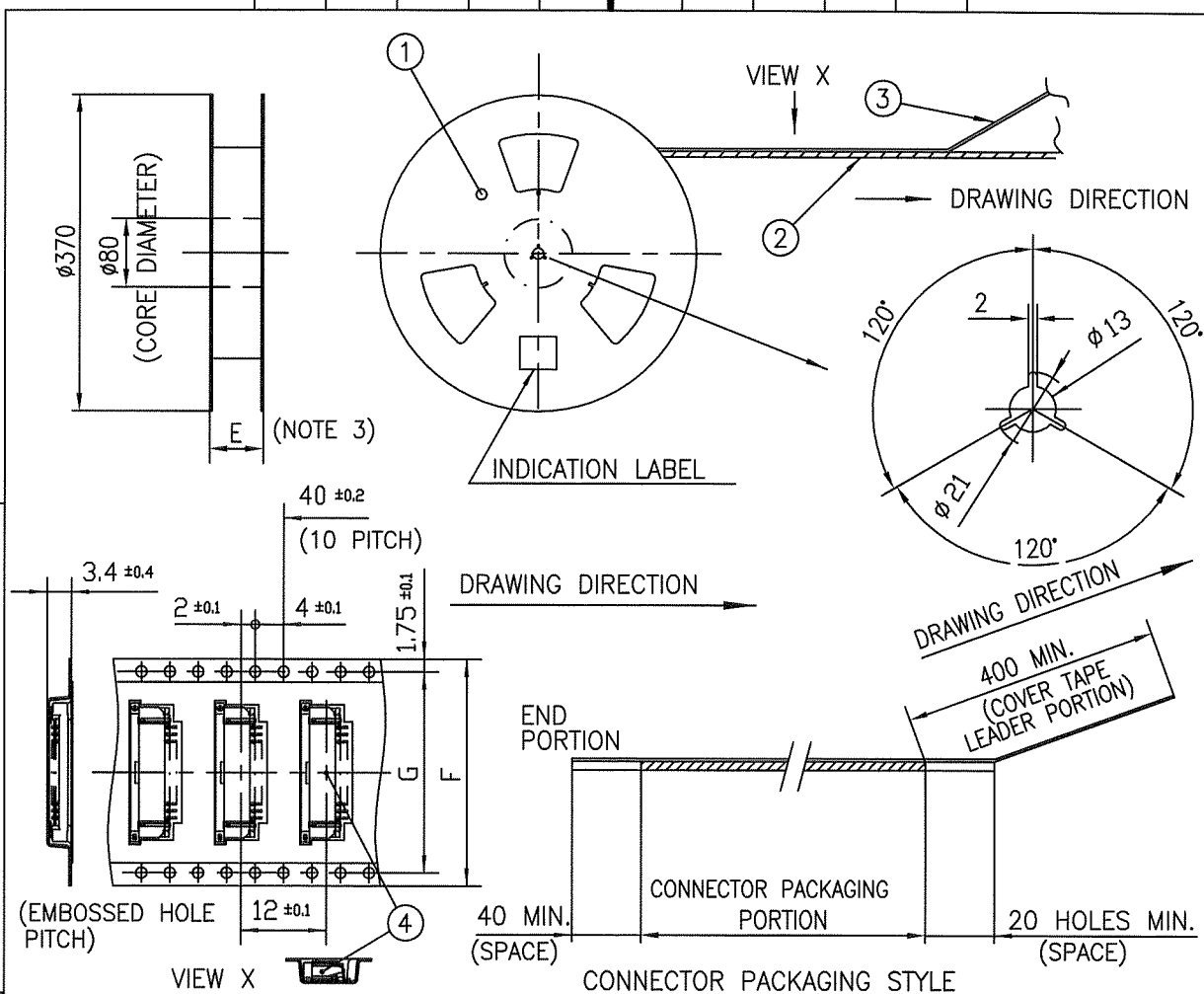


PT. NO.	PARTS NAME	CAT. NO.	MATERIAL	Q'TY	NOTE
1	REEL	_____	CARDBOARD	1	COLOR:WHITE
2	PLASTIC (EMBOSS) TAPE	_____	PET	—	COLOR:TRANSPARENCY
3	COVER	_____	POLYESTER	—	COLOR:TRANSPARENCY
4	CONNECTOR	SFW__R-5STZ__LF	SEE ATTACHED DWG	2000	LOWER CONTACT TYPE

NOTES

1. THIS IS PLASTIC TAPE PACKAGED CONNECTOR USED FOR CIC AND COPES WITH AUTOMATIC MOUNTING (SMT).
2. SEE JIS C 0806 (PACKING OF ELECTRONIC COMPONENTS ON CONTINUOUS TAPES (SURFACE MOUNTING DEVICES)) FOR SHAPE AND DIMENSIONS OF PLASTIC (EMBOSS) TAPE AND REEL.
3. E DIMENSION IS PORTION OF THE CORE.

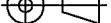





mat'l. code				surface <input checked="" type="checkbox"/> ISO 1302 <input checked="" type="checkbox"/> tolerance <input checked="" type="checkbox"/> ISO 406 <input checked="" type="checkbox"/> ISO 1101	projection	product family 58RF	CODE JP
ltr	ecn no	dr	date	tolerances unless otherwise specified		title PLASTIC TAPE PACKAGED 1mm SPACING SMT CONNECTOR (CAT. NO. SFW__R-5STZE1LF)	
A	J07-0086	H.T.	2/5/07	angles	linear		
				±5°	±5		
				dr	engr	chr	appd
sheet index	revision	A				dwg no	sheet 1 of 1 size
	sheet	1				JSA 97274	A4
						type	Product Customer Drawing
							Rev
							A



PT. NO.	PARTS NAME	CAT. NO.	MATERIAL	Q'TY	NOTE
1	REEL	_____	CARDBOARD	1	COLOR:WHITE
2	PLASTIC (EMBOSS) TAPE	_____	PET	_____	COLOR:TRANSPARENCY
3	COVER	_____	POLYESTER	_____	COLOR:TRANSPARENCY
4	CONNECTOR	SFW__R-6STZ__LF	SEE ATTACHED DWG	2000	UPPER CONTACT TYPE

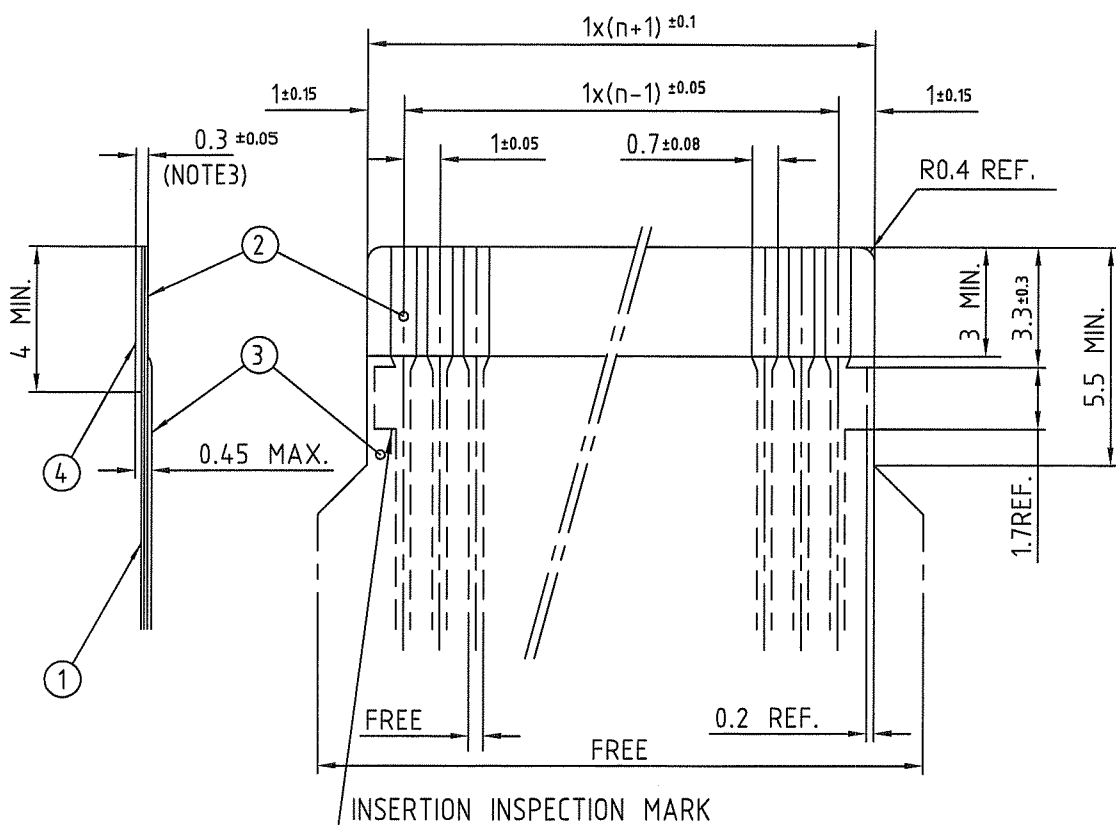
NOTES

1. THIS IS PLASTIC TAPE PACKAGED CONNECTOR USED FOR CIC AND COPES WITH AUTOMATIC MOUNTING (SMT).
2. SEE JIS C 0806 (PACKING OF ELECTRONIC COMPONENTS ON CONTINUOUS TAPES (SURFACE MOUNTING DEVICES)) FOR SHAPE AND DIMENSIONS OF PLASTIC (EMBOSS) TAPE AND REEL.
3. E DIMENSION IS PORTION OF THE CORE.

mat'l. code				surface ISO 1302 ✓		tolerance ISO 406 ISO 1101		projection 		product family 58RF				CODE JP											
ltr		ecn no		dr		date		tolerances unless otherwise specified				title PLASTIC TAPE PACKAGED 1mm SPACING SMT CONNECTOR (CAT.NO. SFW__R-6STZE1LF)													
A		J07-0086		H.T.		2/5/'07		angles		linear						±5									
								±5°								scale \times									
								dr				2/5/07				dwg no				sheet 1 of 1				size	
								engr				2/5/07				JSA 97275				A4					
								chr				2/7/07				type Product Customer Drawing				Rev. A					
								appd				2/7/07													
sheet index		revision sheet		A 1																					

RECOMMENDED CABLE (CIC)

n: NO. OF CONDUCTOR



PT. NO.	PARTS NAME	MATERIAL	THICKNESS (μm)	
1	BASE FILM	POLYESTER OR EQUAL	75	25
2	CONDUCTOR	CARBON PASTE OVER SILVER PASTE	10 MIN.	
3	OVERLAY	POLYIMIDE OR POLYESTER OR EQUAL	—	
4	SUPPORTING TAPE	POLYESTER OR POLYIMIDE OR EQUAL	188	250

- NOTES
1. NO BURR AT EACH PORTION.
 2. NO PEELING IN COMMON USE.
 3. TOTAL THICKNESS LIMIT OF EACH MATERIAL (INCLUDING ADHESIVE AGENT) IS SPECIFIED.

mat'l. code				surface 58 / tolerance ISO 1302 ✓ / ISO 406 / ISO 1101		projection		product family 58RF		CODE JP	
lfr	ecn no	dr	date	tolerances unless otherwise specified		mm		title			
1	—	—	4/12/'93	angles	linear	mm		RECOMMENDED CABLE			
AA	J05-0055	H.T	2/4/'05			scale X		(Cat. No. SFW_R-5/6_)			
AB	J06-0398	H.T	9/26/'06			FCJ		dwg no			
AC	J09-0363	M.Y	2009-10-8	dr	M.YAMASHITA	2009-10-8		sheet 1 of 1			
				enr	M.YAMASHITA	2009-10-8		JSA 91675			
				chr	S. M. T. L.	2009-10-8		A4			
				appd	S. de la Cruz	2009-10-8		type Product Customer Drawing			
sheet index	revision	AC	1								Rev. AC

form: A4

1

2

Mouser Electronics

Authorized Distributor

Click to View Pricing, Inventory, Delivery & Lifecycle Information:

[FCI / Amphenol:](#)

[SFW6R-5STZE1LF](#) [SFW14R-5STZE1LF](#) [SFW4R-5STZE1LF](#) [SFW20R-5STZE1LF](#) [SFW30R-5STZE1LF](#)